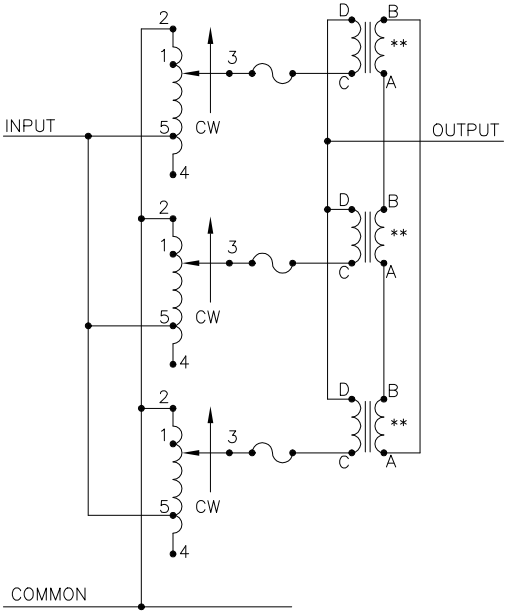
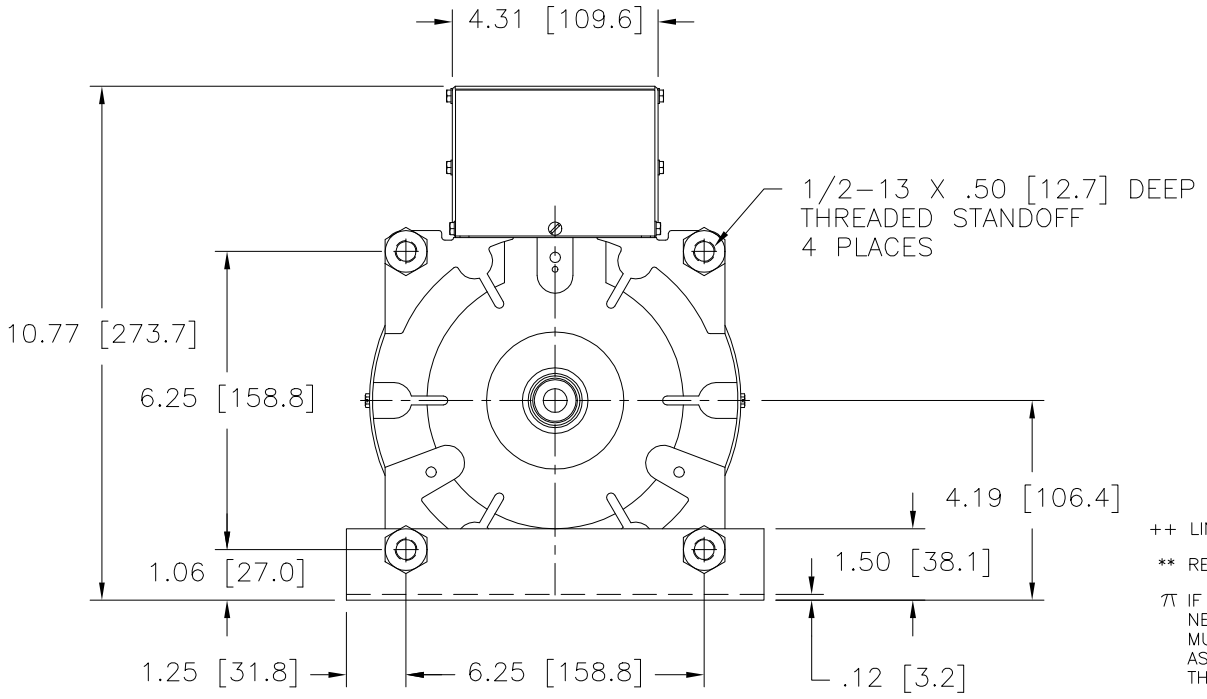


SCHEMATIC  
THREE PHASE WYE  
FUSES RECOMMENDED BUT NOT SUPPLIED




SCHEMATIC  
SINGLE PHASE PARALLEL  
FUSES RECOMMENDED BUT NOT SUPPLIED

NOTE:  
UNIT IS SUPPLIED WITH A 7.00 [177.8] DIA.  
0-100 GRADUATED DIAL PLATE FOR PANEL MOUNTING.



++ LINE TO LINE VOLTAGE.  
\*\* REQUIRES THREE 51LAC PARALLELING CHOKES (NOT SUPPLIED).  
⌘ IF GANGED UNITS ARE USED IN A SYSTEM THAT ORDINARILY HAS A COMMON  
NEUTRAL OR GROUND BETWEEN SOURCE AND LOAD, THE NEUTRAL OR GROUND  
MUST BE CONNECTED TO THE COMMON TERMINALS OF THE VARIABLE TRANSFORMER  
ASSEMBLY. IF THE SYSTEM HAS NO NEUTRAL, THE LOAD MUST BE BALANCED OR  
THE TRANSFORMER WILL BE DAMAGED.  
■ JUMPER PROVIDED IN STANDARD COMMON POSITION AND SHOULD BE MOVED OR  
REMOVED AS REQUIRED.

SPECIFICATIONS																	
WIRING	INPUT		OUTPUT				SHAFT ROTATION TO INCREASE VOLTAGE	TERMINAL CONNECTIONS									
	VOLTS	HERTZ	VOLTS	CONSTANT CURRENT LOAD		CONSTANT IMPEDANCE LOAD		FOR INCREASING VOLTAGE AS VIEWED FROM BASE END ■									
				MAX. AMPS	MAX. KVA	MAX. AMPS		MAX. KVA	INPUT	JUMPER	OUTPUT						
SINGLE PHASE PARALLEL **	120	50/60	0-120	9.00	90	10.8	CW	2-2-2, 4-4-4	——	4-D							
			0-140	75	10.50	——	——	CCW	2-2-2, 4-4-4	——	2-D						
								CW	1-1-1, 4-4-4	——	4-D						
								CCW	5-5-5, 2-2-2	——	2-D						
THREE PHASE WYE π	240 ++	50/60	0-240	25	10.40	30	12.5	CW	2-2-2	4-4-4	3-3-3						
			0-280	25	12.10	——	——	CCW	4-4-4	2-2-2	3-3-3						
		CW						1-1-1	4-4-4	3-3-3							
		CCW						5-5-5	2-2-2	3-3-3							
UNLESS OTHERWISE SPECIFIED, TOLERANCE IS ± DECIMALS .06 HOLES .0021 ANGLES 1° DRAFT 1-1/2° XXX .005			UNITS IN [mm]		TITLE: SPEC. CONTROL DRAWING VARIABLE TRANSFORMER MODEL: 251OCT-3												
MATERIAL :			ALL DIMENSIONS APPLY AFTER PLATING		 A COMPONENTS CORPORATION OF AMERICA COMPANY DAYTON, OHIO U.S.A.												
The information and design disclosed herein was originated by and is the property of STACO ENERGY PRODUCTS CO., which reserves all patent, proprietary, design, manufacturing, reproduction, use and sale rights thereto, and to any article disclosed therein except to the extent rights are expressly granted to others. The foregoing does not apply to vendor proprietary parts.						DRAWN BY S.A. SMITH		DATE 1/3/2001		FIRST USED ON		DO NOT SCALE DWG.		CUSTOMER APPROVAL		DATE	
						CHECKER		DATE		WEIGHT APPROX. 68 LBS		CODE IDENT. NO. 83008		DWG. SIZE		DWG. NO.	
						ENGINEER		DATE		SCALE 1/2		SHEET 1 OF 1		D		031-5025	



# Mouser Electronics

Authorized Distributor

Click to View Pricing, Inventory, Delivery & Lifecycle Information:

Staco:

[2510CT-3](#)