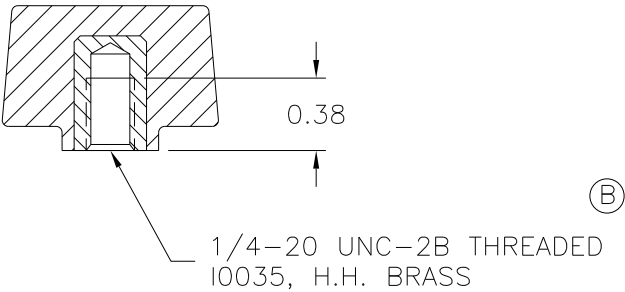
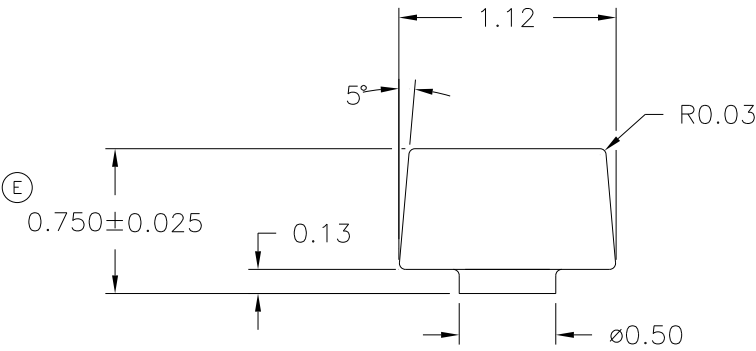
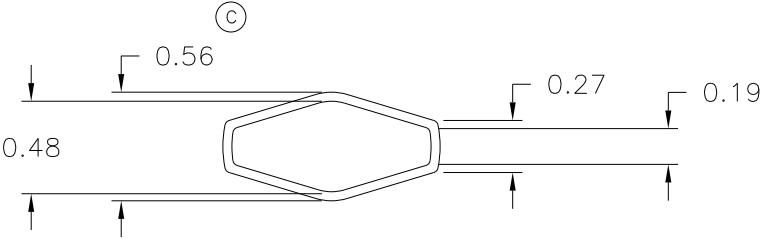


CAVITY	3085
PLUNGER	3085
SHIMS	1/4+1/4(30-J)
PIN	3085
INSERT	I0035
PLUNGER KEY	1/4x1/8x7/8
CAVITY KEY	1/4x1/8x7/8



(F)
 MATERIAL: #2308 PHENOLIC (B08)
 COLOR: BLACK

		F	WAS G.P. PHENOLIC	JAM	1/11/16
		E	WAS 0.75	DS	6/12/06
		D	WAS 3003-6	TS	3/26/02
TOLERANCES: UNLESS OTHERWISE SPECIFIED	DO NOT SCALE DRAWING	C	ADDED DIM	JAM	3/14/02
		B	WAS I1631 (A)	HD	7/2/96
DECIMALS: X.XXX ± .005 X.XX ± .015	MM: X.XX ± 0.15MM X.X ± 0.4MM	A	WAS I-1067	HD	8/3/93
		-	CAD/REDRAWN	HD	4/20/93
FRACTIONS ± 1/64	ANG. ± 1°	CHANGES			

Mouser Electronics

Authorized Distributor

Click to View Pricing, Inventory, Delivery & Lifecycle Information:

[Davies Molding:](#)

[3085](#)