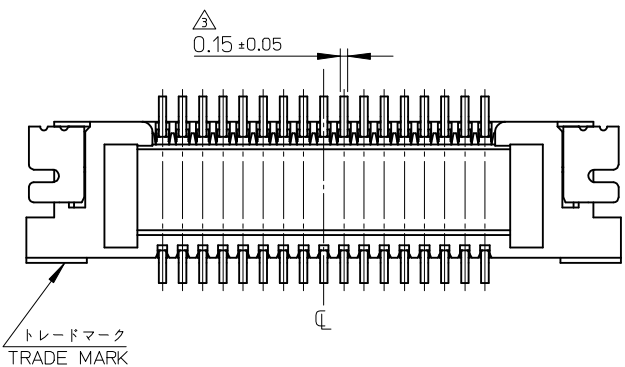
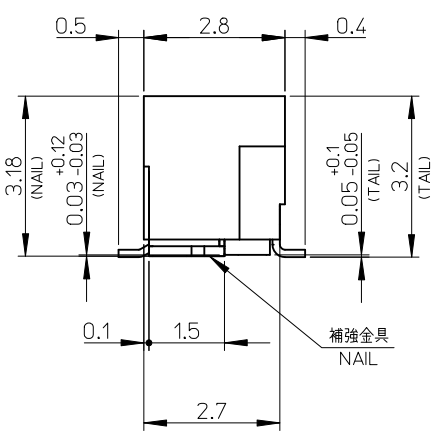
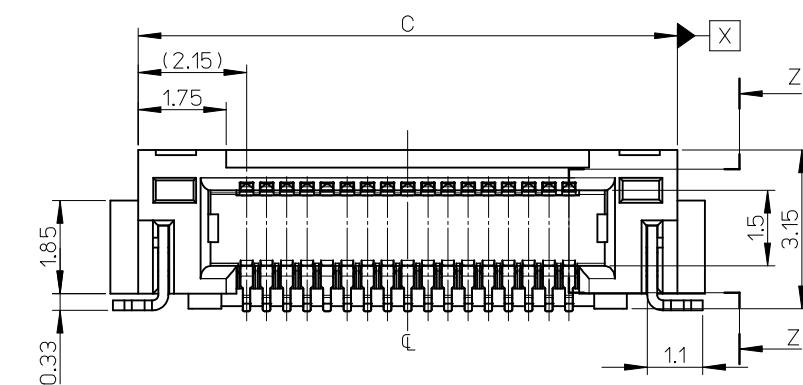
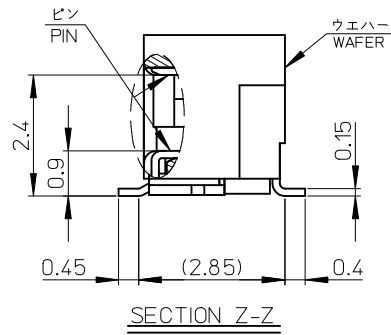
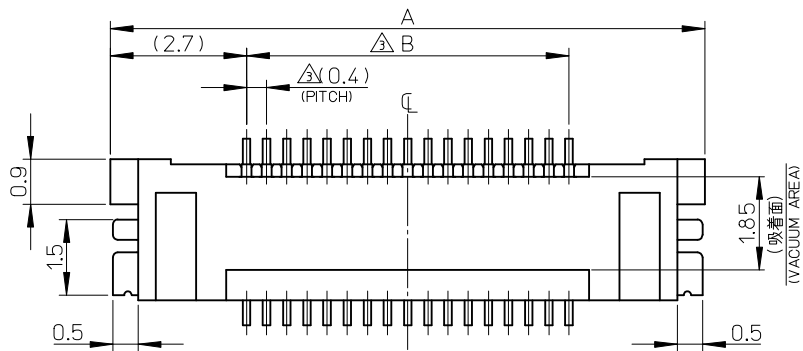


注記 NOTES

1. 使用材料 MATERIAL  
ウエハー：液晶ポリマー ガラス充填 UL94V-0 黒色  
WAFER: LIQUID CRYSTAL POLYMER, GLASS FILLED,  
UL94V-0, COLOR BLACK  
ピン：リン青銅 (t=0.15)  
PIN: PHOSPHOR BRONZE (t=0.15)  
補強金具：リン青銅 (t=0.2)  
FITTING NAIL: PHOSPHOR BRONZE (t=0.2)
2. メッキ仕様 PLATING  
ピン PIN  
金メッキ  
(コンタクト部とテール部)  
GOLD PLATING  
(CONTACT AND TAIL AREA)  
下地メッキ：ニッケルメッキ 1.5μm 以上  
UNDER PLATING: NICKEL 1.5 MICROMETER MINIMUM.  
補強金具 FITTING NAIL  
錫メッキ 1.0μm 以上  
TIN PLATING 1.0 MICROMETER MINIMUM.  
下地メッキ：ニッケルメッキ 1.0μm 以上  
UNDER PLATING: NICKEL 1.0 MICROMETER MINIMUM.
- △ テール部に適用。  
APPLY TO THE TAIL AREA.
4. 嵌合相手：54552 シリーズ  
MATE WITH: 54552 SERIES.
5. テール平坦度は、0.08 以下  
テール及び金具の平坦度は、0.1 以下  
TAIL COPLANARITY TO BE 0.08 MAXIMUM  
TAIL AND FITTING NAIL COPLANARITY TO BE 0.1 MAXIMUM
6. ELV 及び RoHS 適合品  
ELV AND RoHS COMPLIANT
7. 本製品は 503376-\*\*19 のボス無し品である。  
THIS PRODUCT IS NON-BOSS VERSION OF 503376-\*\*19.

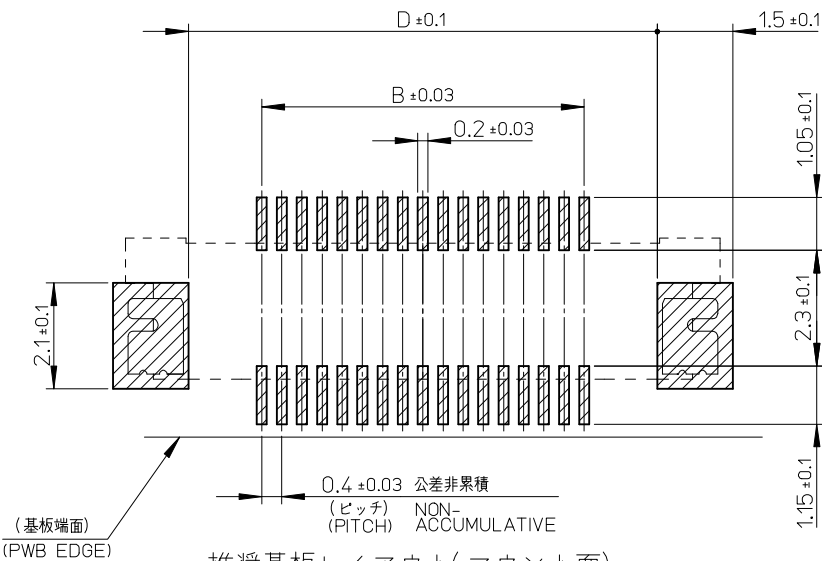


|      |      |     |    |                    |          |
|------|------|-----|----|--------------------|----------|
| 12.5 | 13.9 | 9.6 | 15 | 503376-5020        | 50       |
| D    | C    | B   | A  | EMBOSSED TAPE PKG. | 極数       |
|      |      |     |    | ORDER No. オーダー番号   | CIRCUITS |

CONNECTOR SERIES No. : 503376-\*\*29

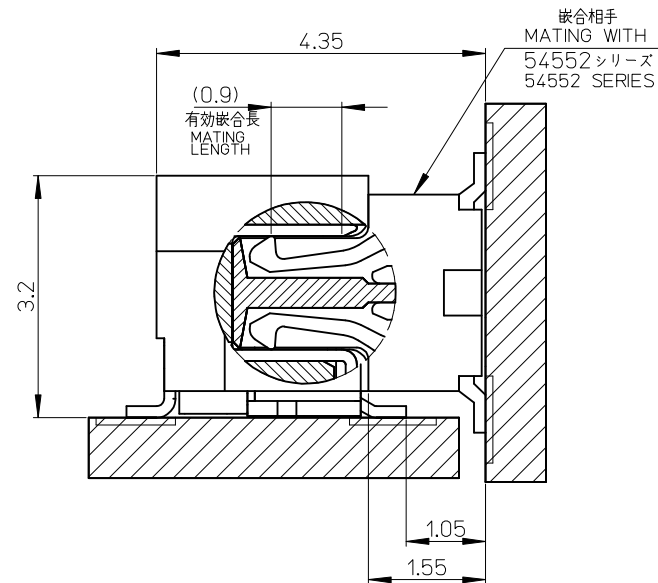
|  |  |  |  |                 |             |       |  |                           |                               |  |
|--|--|--|--|-----------------|-------------|-------|--|---------------------------|-------------------------------|--|
| RELEASED<br>EC NO: J2013-0242<br>2012/08/31<br>DRWG:GMATSUNO<br>2012/08/31<br>CHKD:TASAKAWA<br>2012/08/31<br>APPR:TASAKAWA | DESCRIPTION<br>REV<br>O                                    | GENERAL TOLERANCES<br>(UNLESS SPECIFIED) |  | DIMENSION STYLE |             | SCALE | DESIGN UNITS   | THIRD ANGLE<br>PROJECTION |                               |  |
|  |  |  |  | MM ONLY         |             | ---   | METRIC   |                           |                               |  |
|  |  | 10 UNDER                                 |  | ±0.2            | DRAWN BY    | DATE  | TITLE<br>0.4 B-TO-B CONN. RA<br>PLUG NAIL ASSY<br>(WITHOUT BOSS) |                           |                               |  |
|  |  | 10 OVER 30 UNDER                         |  | ±0.25           | CHECKED BY  | DATE  |  |                           |                               |  |
|  |  | 30 OVER                                  |  | ±0.3            | APPROVED BY | DATE  |  |                           |                               |  |
|  | ANGULAR ±3 °   |  | TASAKAWA   | 2012/08/31      | molex       |       |  |                           |                               |  |
|  | DRAFT WHERE APPLICABLE<br>MUST REMAIN<br>WITHIN DIMENSIONS |  | MATERIAL NO.<br>SEE CHART  |                 |             |       |  |                           | DOCUMENT NO.<br>SD-503376-003 |  |
|  |  | SIZE<br>A3                               | THIS DRAWING CONTAINS INFORMATION THAT IS PROPRIETARY TO MOLEX<br>INCORPORATED AND SHOULD NOT BE USED WITHOUT WRITTEN PERMISSION |                 |             |       |  |                           |                               |  |

10 9 8 7 6 5 4 3 2 1



推奨基板レイアウト(マウント面)

RECOMMENDED P.W.BOARD  
PATTERN DIMENSION. (REFERENCE)  
(MOUNTING AREA)




嵌合断面 (参考)

MATED DRAWING(REFERENCE)

RELEASED  
EC NO: J2013-0242  
2012/08/31  
DRWG:GMATSUNO  
2012/08/31  
CHKD:TASAKAWA  
2012/08/31  
APPR:TASAKAWA  
2012/08/31  
REV  
0

| GENERAL TOLERANCES<br>(UNLESS SPECIFIED)                   |        |
|--|--------|
| 10 UNDER   | ± 0.2  |
| 10 OVER 30 UNDER   | ± 0.25 |
| 30 OVER  | ± 0.3  |
| ANGULAR  | ± 3 °  |
| DRAFT WHERE APPLICABLE<br>MUST REMAIN<br>WITHIN DIMENSIONS |        |

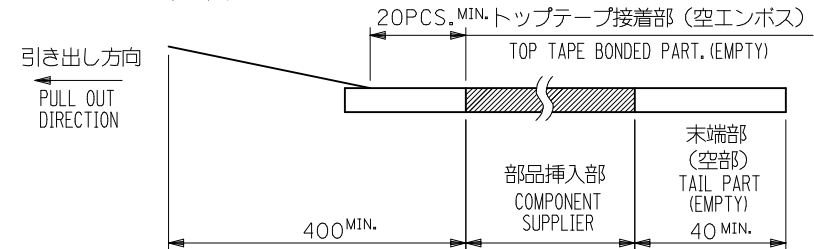
| DIMENSION STYLE<br>MM ONLY |            |
|----------------------------|------------|
| DRAWN BY                   | DATE       |
| GMATSUNO                   | 2012/08/27 |
| CHECKED BY                 | DATE       |
| TASAKAWA                   | 2012/08/27 |
| APPROVED BY                | DATE       |
| TASAKAWA                   | 2012/08/31 |
| MATERIAL NO.               |            |
| SEE CHART                  |            |
| SIZE                       | A3         |

|  |                        |   |                           |
|--|------------------------|---|---------------------------|
| CONNECTOR SERIES No.   |                        | 503376-**-29  |                           |
| SCALE<br>---   | DESIGN UNITS<br>METRIC |  | THIRD ANGLE<br>PROJECTION |
| TITLE<br>0.4 B-TO-B CONN. RA<br>PLUG NAIL ASSY<br>(WITHOUT BOSS)                               |                        |   |                           |
| <b>molex</b>   |                        |   |                           |
| DOCUMENT NO.<br>SD-503376-003  |                        |   | SHEET NO.<br>2 OF 2       |
| AINS INFORMATION THAT IS PROPRIETARY TO MOLEX<br>SHOULD NOT BE USED WITHOUT WRITTEN PERMISSION |                        |   |                           |

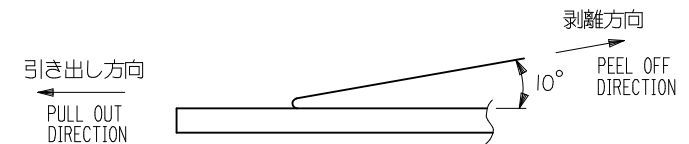
9 8 7 6 5 4 3 2

# NOTES

- 製品詳細寸法については SD-503376-003 を参照ください。  
RE DETAILED DIMENSION, SEE SD-503376-003
- 梱包数量：1500個/リール  
NUMBER OF CONNECTORS：1500PCS/REEL
- リードテープ長さ LEAD TAPE LENGTH



- トップテープの剥離強度：0.1～1.3N {10～130gf} (剥離方向は下図参照)  
尚、本規格値は出荷時に適用。(但し、輸送時に剥離が発生しないこと。)  
PEELING OFF FORCE OF TOP TAPE：0.1～1.3N {10～130gf}  
(PEELING DIRECTION AS SHOWN IN FOLLOWING FIG.)  
THIS REQUIREMENT SHOULD BE APPLIED AT SHIPMENT.  
PEEL OFF SHOULD NOT BE ALLOWED, DURING TRANSPORTATION.



- 材料 (MATERIAL)  
キャリアテープ (CARRIER TAPE)：ポリプロピレン (POLYPROPYLENE)  
トップテープ (TOPTAPE)：PET, PE, PEF  
リール (REEL)：ポリスチレン (PS) (リサイクル材を含む)  
POLYSTYRENE (PS) <RECYCLE MATERIAL CONTAINED>

- ELV 及び RoHS 適合品  
ELV AND RoHS COMPLIANT.

- 本製品は、503376-\*\*10 のボス無し品である。  
THIS PRODUCT IS NON-BOSS VERSION OF 503376-\*\*10.

|                    |          |
|--------------------|----------|
| 503376-5020        | 50       |
| EMBOSSED TAPE PKG. | 極数       |
| ORDER No. オーダー番号   | CIRCUITS |

CONNECTOR SERIES NO. 503376-\*\*20

|              |                        |                           |
|--------------|------------------------|---------------------------|
| SCALE<br>--- | DESIGN UNITS<br>METRIC | THIRD ANGLE<br>PROJECTION |
|--------------|------------------------|---------------------------|

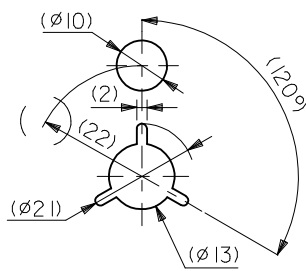
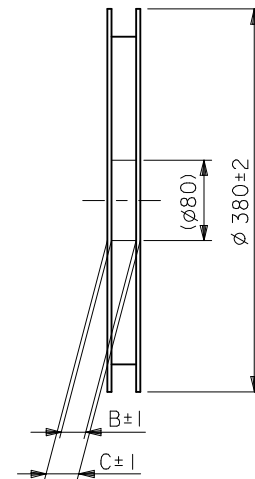
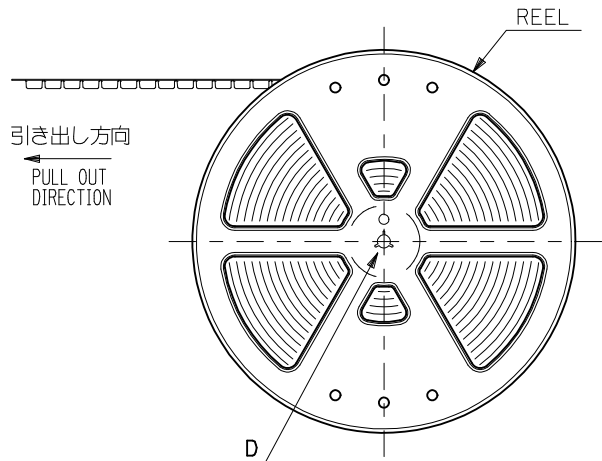
EMBSTP PKG FOR 0.4 B/B  
CONN. RA PLUG NAIL ASSY  
WITHOUT BOSS

**molex**

SD-503376-004

SHEET NO.  
1 OF 2

|   |  |  |           |                            |                    |  |                        |                           |        |           |
|---|--|--|-----------|----------------------------|--------------------|--|------------------------|---------------------------|--------|-----------|
| RELEASED<br>EC NO.: J2013-0242<br>DWG#:GMATSUNO<br>CHKD.:TASAKAWA<br>APPR.:TASAKAWA | DESCRIPTION  | GENERAL TOLERANCES<br>(UNLESS SPECIFIED)   |           | DIMENSION STYLE<br>MM ONLY |                    | SCALE<br>---   | DESIGN UNITS<br>METRIC | THIRD ANGLE<br>PROJECTION |        |           |
|   |  | 10 UNDER   | ±0.2      | DRAWN BY<br>GMATSUNO       | DATE<br>2012/08/27 | TITLE<br>EMBSTP PKG FOR 0.4 B/B<br>CONN. RA PLUG NAIL ASSY<br>WITHOUT BOSS |                        |                           |        |           |
|   |  | 10 OVER 30 UNDER   | ±0.25     | CHECKED BY<br>TASAKAWA     | DATE<br>2012/08/27 |  |                        |                           |        |           |
|   |  | 30 OVER  | ±0.3      | APPROVED BY<br>TASAKAWA    | DATE<br>2012/08/31 |  |                        |                           |        |           |
|   |  | ANGULAR ±3 °   |           | MATERIAL NO.               |                    | DOCUMENT NO.   |                        |                           |        | SHEET NO. |
|   | DRAFT WHERE APPLICABLE<br>MUST REMAIN<br>WITHIN DIMENSIONS |  | SEE CHART |                            | SD-503376-004      |  |                        |                           | 1 OF 2 |           |
|   | REV  | THIS DRAWING CONTAINS INFORMATION THAT IS PROPRIETARY TO MOLEX<br>INCORPORATED AND SHOULD NOT BE USED WITHOUT WRITTEN PERMISSION |           |                            |                    |  |                        |                           |        |           |



DETAIL D

10

9

8

7

6

5

4

3

2

1

F

E

D

C

B

A

0.5±0.05

トップテープ  
TOP TAPE

(A)

(4.65)

SECT X-X

503376-\*\*29

24±0.3

(11.5)

1.75±0.1

(4.45)

(2.075)

(2.95)

(1.325)

Y

Y

(A)

(2)

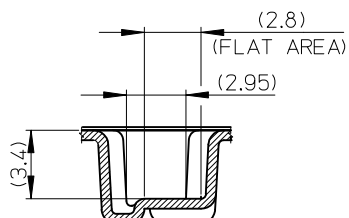
12±0.1

PITCH

Ø 1.5±0.1

引き出し方向

PULL OUT DIRECTION

4±0.1  
PITCH累積ピッチ 40±0.2  
ACCUMULATIVE  
PITCH 40±0.224mm幅キャリアテープ  
24mm WIDTH CARRIER TAPE

SECT Y-Y

|                                |      |      |      |  |                |
|--------------------------------|------|------|------|--|----------------|
| 24                             | 29.4 | 25.4 | 15.2 | 503376-5020                            | 50             |
| キャリアテープ幅<br>CARRIER TAPE WIDTH | C    | B    | (A)  | EMBOSSED TAPE PKG.<br>ORDER No. オーダー番号 | 極数<br>CIRCUITS |

|  |             |  |        |                            |            |  |                        |   |                     |  |
|--|-------------|--|--------|----------------------------|------------|--|------------------------|---|---------------------|--|
| RELEASED<br>EC NO: J2013-0242<br>DRWG:GMATSUNO 2012/08/31<br>CHKD:TASAKAWA 2012/8/31<br>APPR:TASAKAWA 2012/08/31 | DESCRIPTION | GENERAL TOLERANCES<br>(UNLESS SPECIFIED)                   |        | DIMENSION STYLE<br>MM ONLY |            | SCALE<br>---   | DESIGN UNITS<br>METRIC | 503376-004<br>THIRD ANGLE<br>PROJECTION |                     |  |
|  |             | 10 UNDER   | ± 0.2  | DRAWN BY                   | DATE       | TITLE<br>EMBSTP PKG FOR 0.4 B/B<br>CONN. RA PLUG NAIL ASSY<br>WITHOUT BOSS   | molex                  | DOCUMENT NO.<br>SD-503376-004           | SHEET NO.<br>2 OF 2 |  |
|  |             | 10 OVER 30 UNDER   | ± 0.25 | CHECKED BY                 | DATE       |  |                        |   |                     |  |
|  |             | 30 OVER  | ± 0.3  | APPROVED BY                | DATE       |  |                        |   |                     |  |
|  |             | ANGULAR  | ±3 °   | TASAKAWA                   | 2012/08/31 | MATERIAL NO.<br>SEE CHART  |                        |   |                     |  |
|  |             | DRAFT WHERE APPLICABLE<br>MUST REMAIN<br>WITHIN DIMENSIONS |        | SIZE<br>A3                 |            | THIS DRAWING CONTAINS INFORMATION THAT IS PROPRIETARY TO MOLEX<br>INCORPORATED AND SHOULD NOT BE USED WITHOUT WRITTEN PERMISSION |                        |   |                     |  |
|  | REV         |  |        |                            |            |  |                        |   |                     |  |

9

8

7

6

5

4

3

2

# Mouser Electronics

Authorized Distributor

Click to View Pricing, Inventory, Delivery & Lifecycle Information:

Molex:

[503376-5020](#) [54552-5010](#)