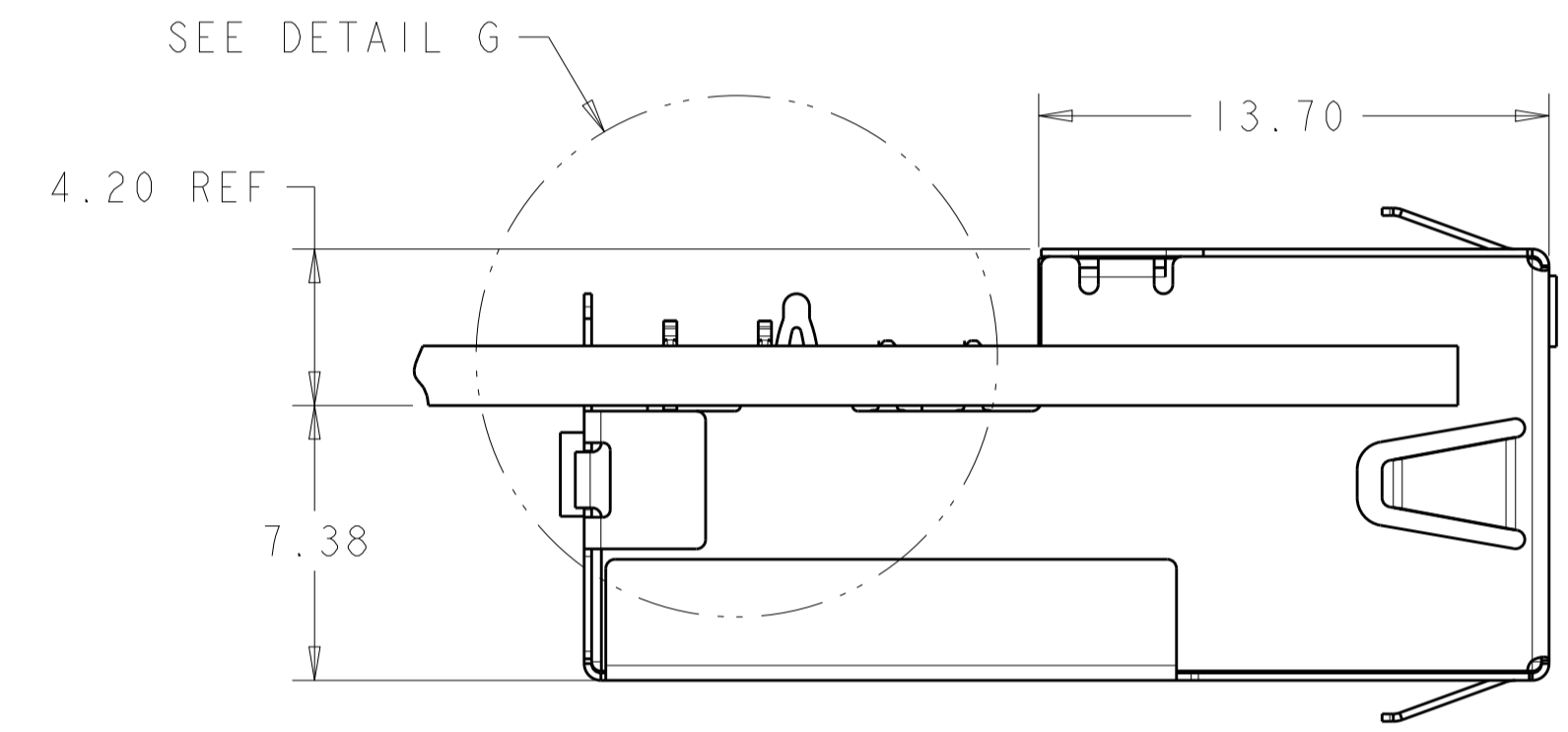
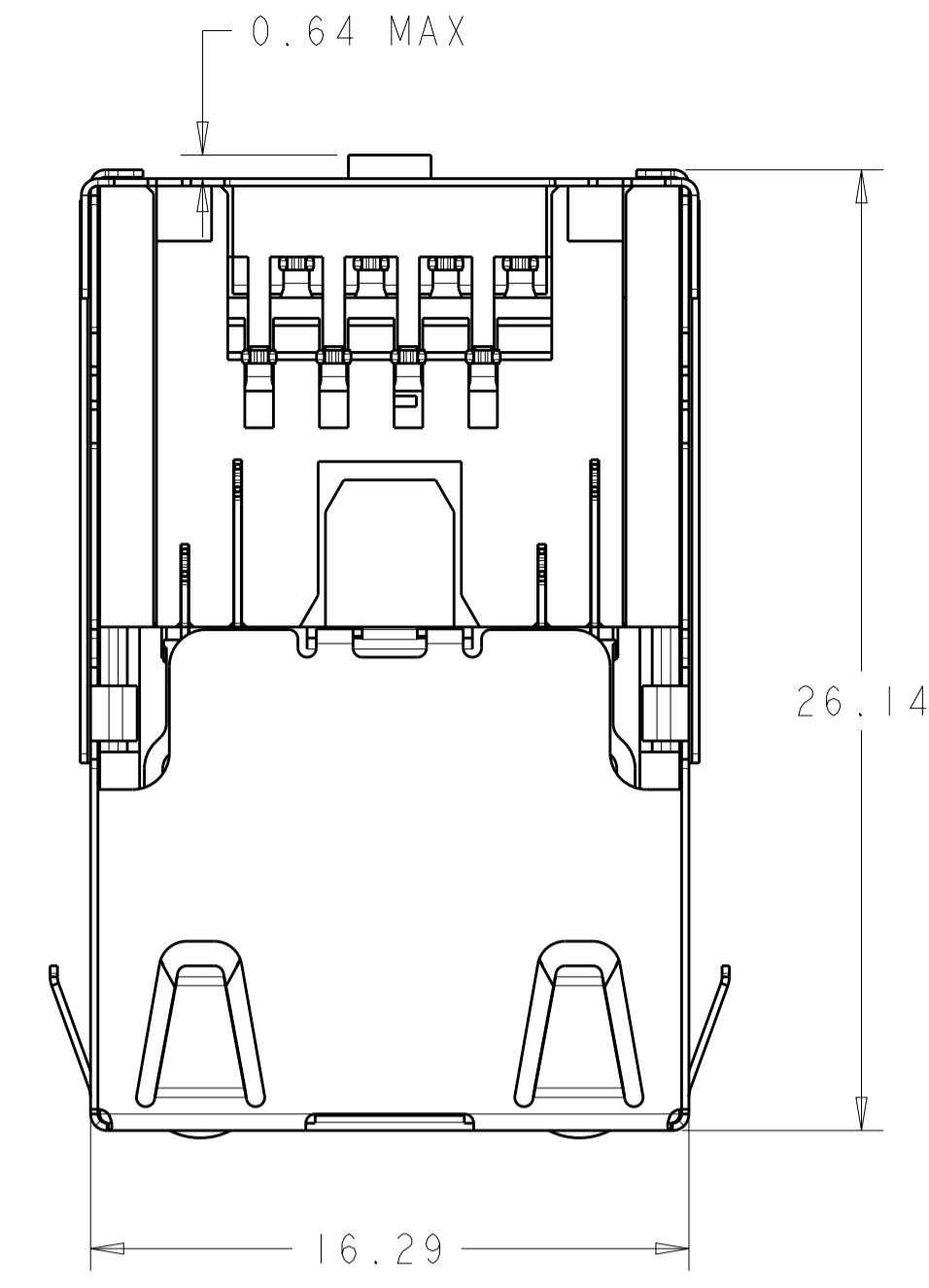
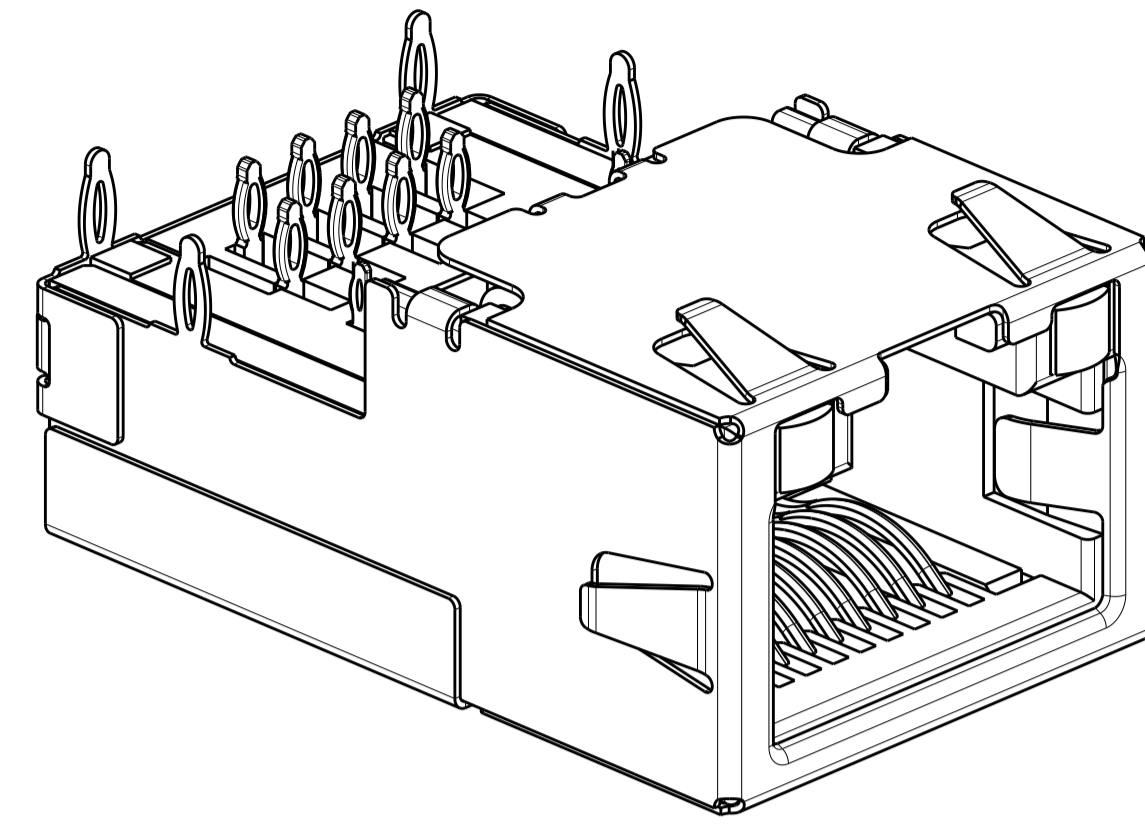
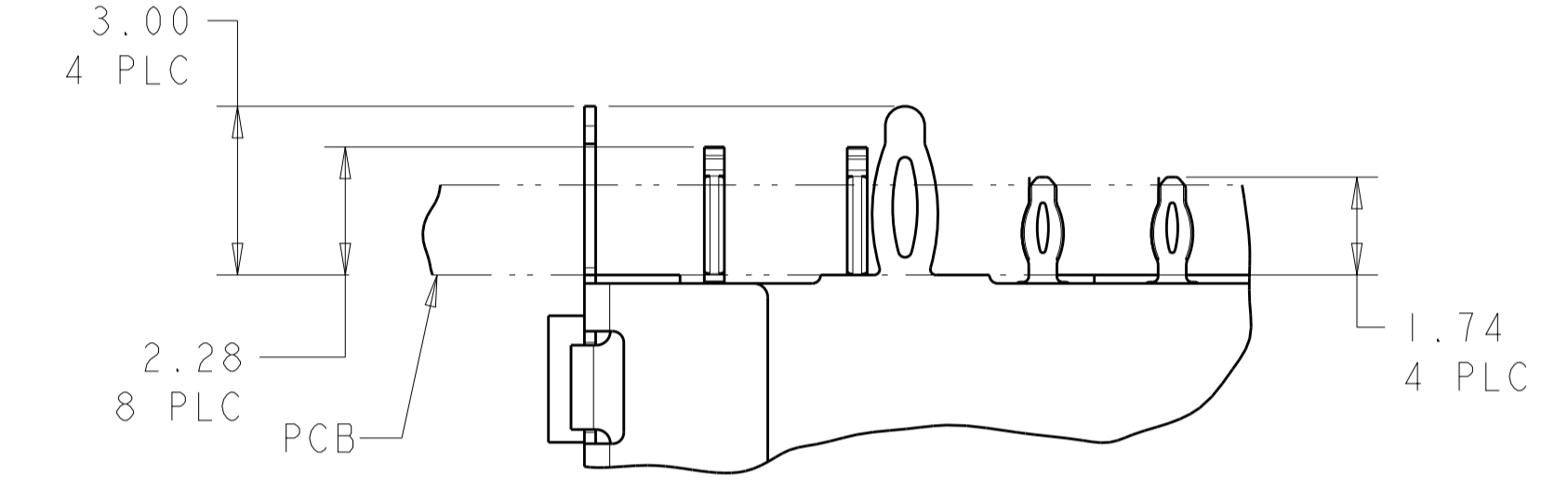
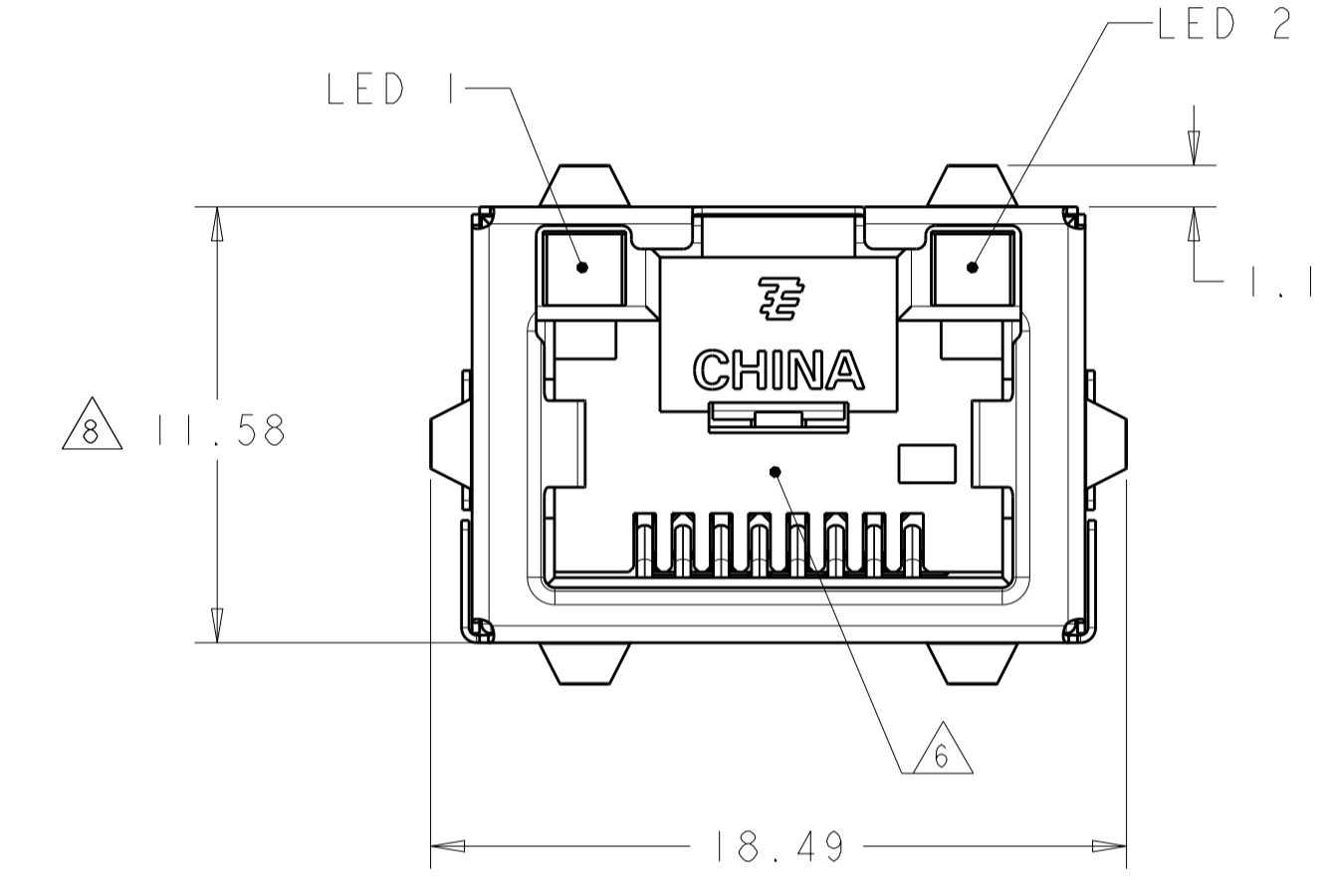


| LOC | DIST | REVISIONS |               |           |     |      |
|-----|------|-----------|---------------|-----------|-----|------|
| AA  | 00   | P. LTH    | DESCRIPTION   | DATE      | DWN | APVD |
|     |      | B5        | ECR-11-009822 | 11MAY2011 | JJ  | MOW  |
|     |      | C         | ECR-12-002445 | 09FEB2012 | JJ  | AC   |
|     |      | D         | ECO-18-005828 | 27MAR2018 | LL  | SH   |

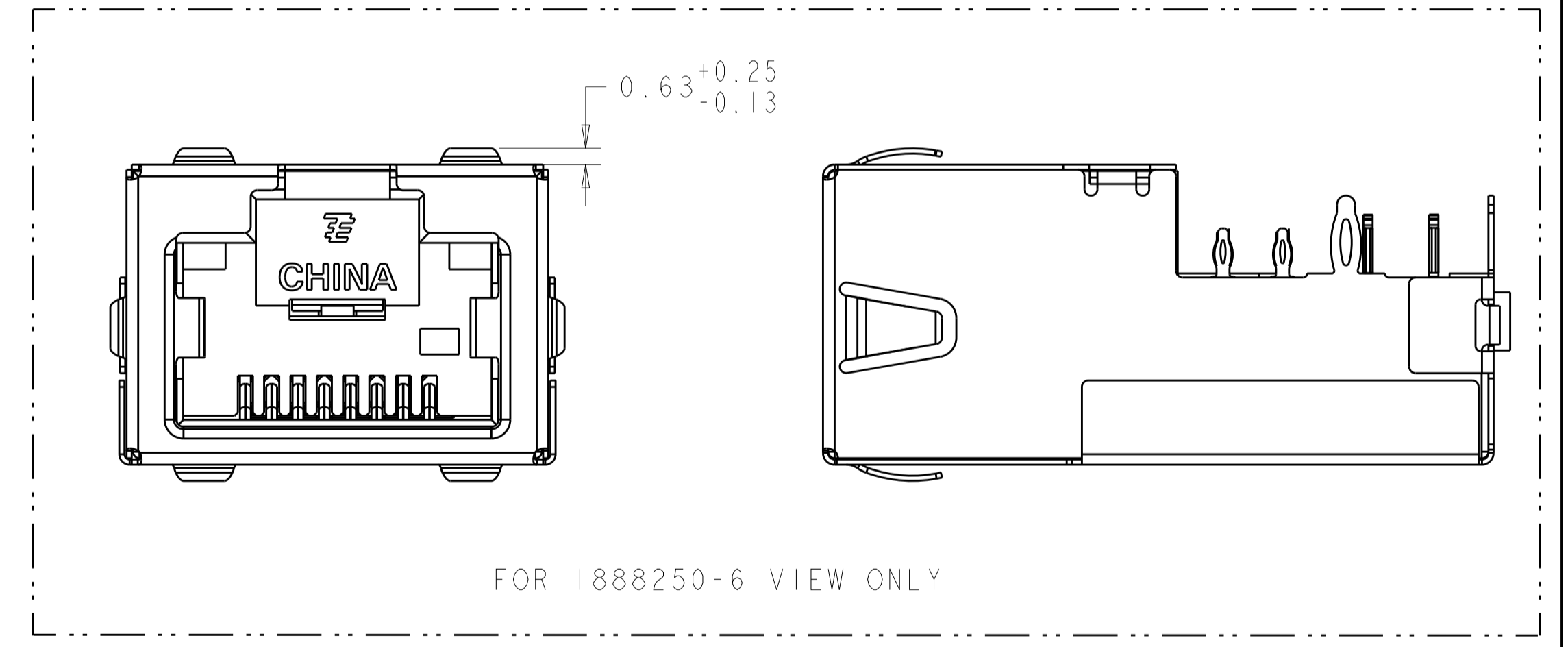
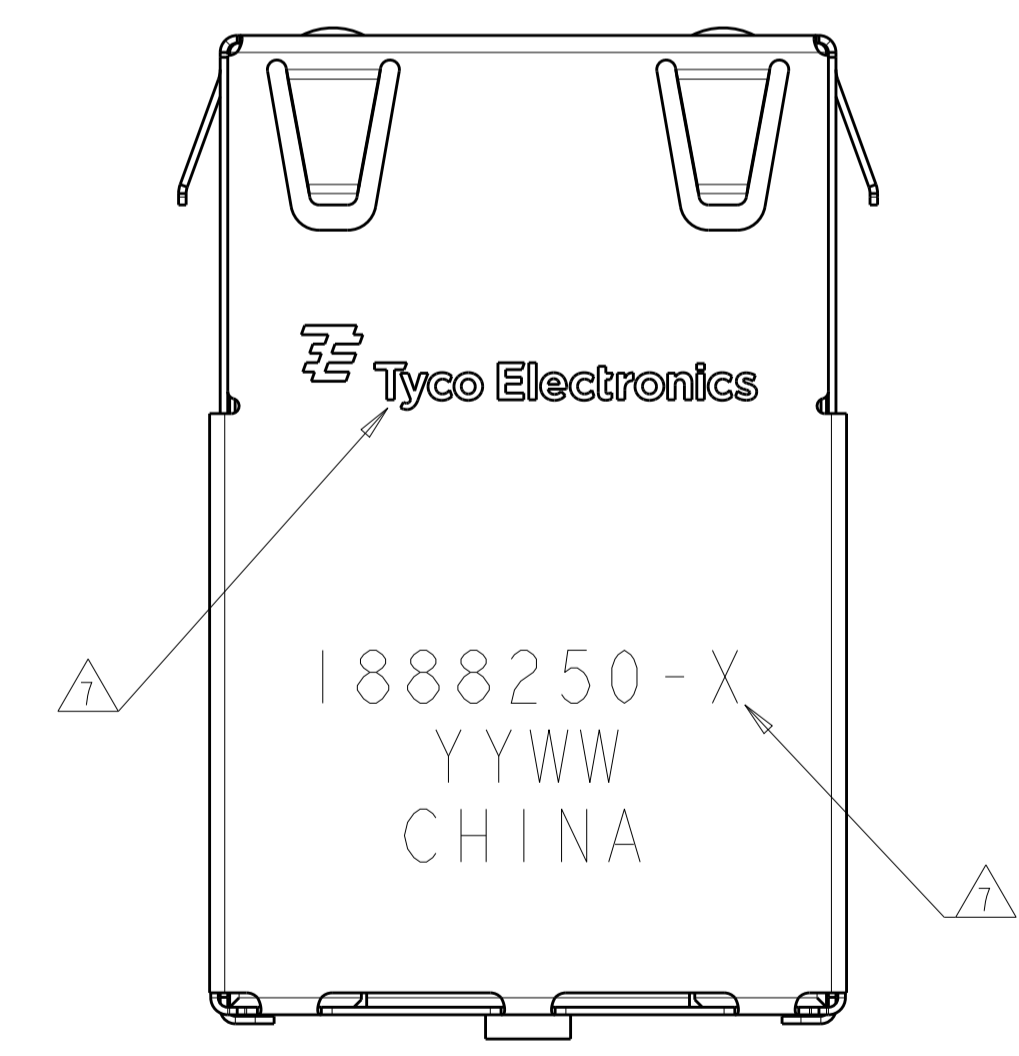


VIEW SHOWN ASSEMBLED TO PCB ONLY



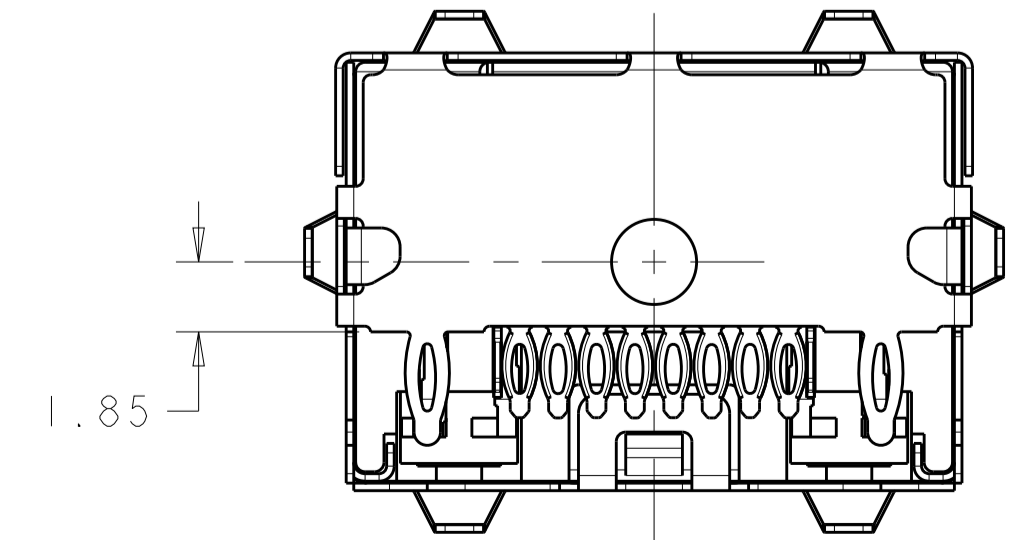
DETAIL G SCALE 8:1

- MATERIALS:  
HOUSING: BLACK THERMOPLASTIC, 94V-0.  
SHIELD: COPPER ALLOY WITH 0.76µm MIN NICKEL PLATE  
CONTACTS: PHOSPHOR BRONZE WITH 1.27µm MIN GOLD AT MATING INTERFACE OVER 1.27µm MIN NICKEL UNDERPLATE.
  - PERFORMANCE:  
INSERTION LOSS: 0.4dB @ 100 MHz.  
RETURN LOSS: 12.0dB @ 100 MHz.  
CROSSTALK ATTENUATION: -43dB MINIMUM @ 100 MHz  
CURRENT: 0.6 AMPERE MAXIMUM PER SINGAL CONTACT.
  - LED'S COMPLIANT WITH IEC60825-1 SAFETY OF LASER PRODUCTS WHEN OPERATED AT CURRENT OF 20mA.
  - ALL DIMENSIONS NOMINAL.
  - RECOMMENDED MOTHERBOARD PCB THICKNESS: 1.60±0.16.
- 6 RJ45 PORT CONFORMS TO FCC RULES AND REGULATIONS PART 68 SUB-PART F.
- 7 TE LOGO, PART NUMBER, DATE CODE AND COUNTRY OF ORIGIN TO BE MARKED IN APPROXIMATE LOCATION SHOWN.
- 8 THIS DIMENSION MEETS THE ADVANCED MEZZANINE CARD (AMC) SPECIFICATION.
- 9 PIN 9,10,11,12 ARE LED LEAD PINS, For 1888250-3, NO LED INTEGRATED, HOLES ON PCB FOR THESE PINS ARE ONLY OPTIONAL.
- 10 LED WAVELENGTH FOR THE PN 1888250-7:  
GREEN: 520nm ~ 525nm; YELLOW: 590nm ± 5nm.



FOR 1888250-6 VIEW ONLY

| LED #1  | LED #2  | PART NUMBER |
|---------|---------|-------------|
| GRN/YEL | GRN/YEL | 1888250-7   |
| -       | -       | 1888250-6   |
| YELLOW  | GREEN   | 1888250-5   |
| GREEN   | GREEN   | 1888250-4   |
| -       | -       | 1888250-3   |
| GRN/YEL | GRN/YEL | 1888250-2   |
| GREEN   | YELLOW  | 1888250-1   |



THIS DRAWING IS A CONTROLLED DOCUMENT. DWN: MS/L.A.MAYER 15FEB2008  
CHK: J.WESTMAN 15FEB2008  
APVD: S.FLICKINGER 15FEB2008

TE Connectivity

CONNECTOR ASSEMBLY, LOW PROFILE, PRESS FIT, MODULAR JACK, 1X1, RJ45

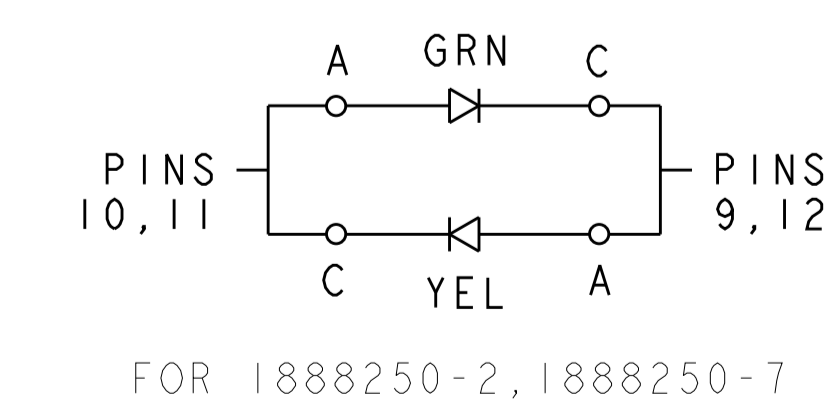
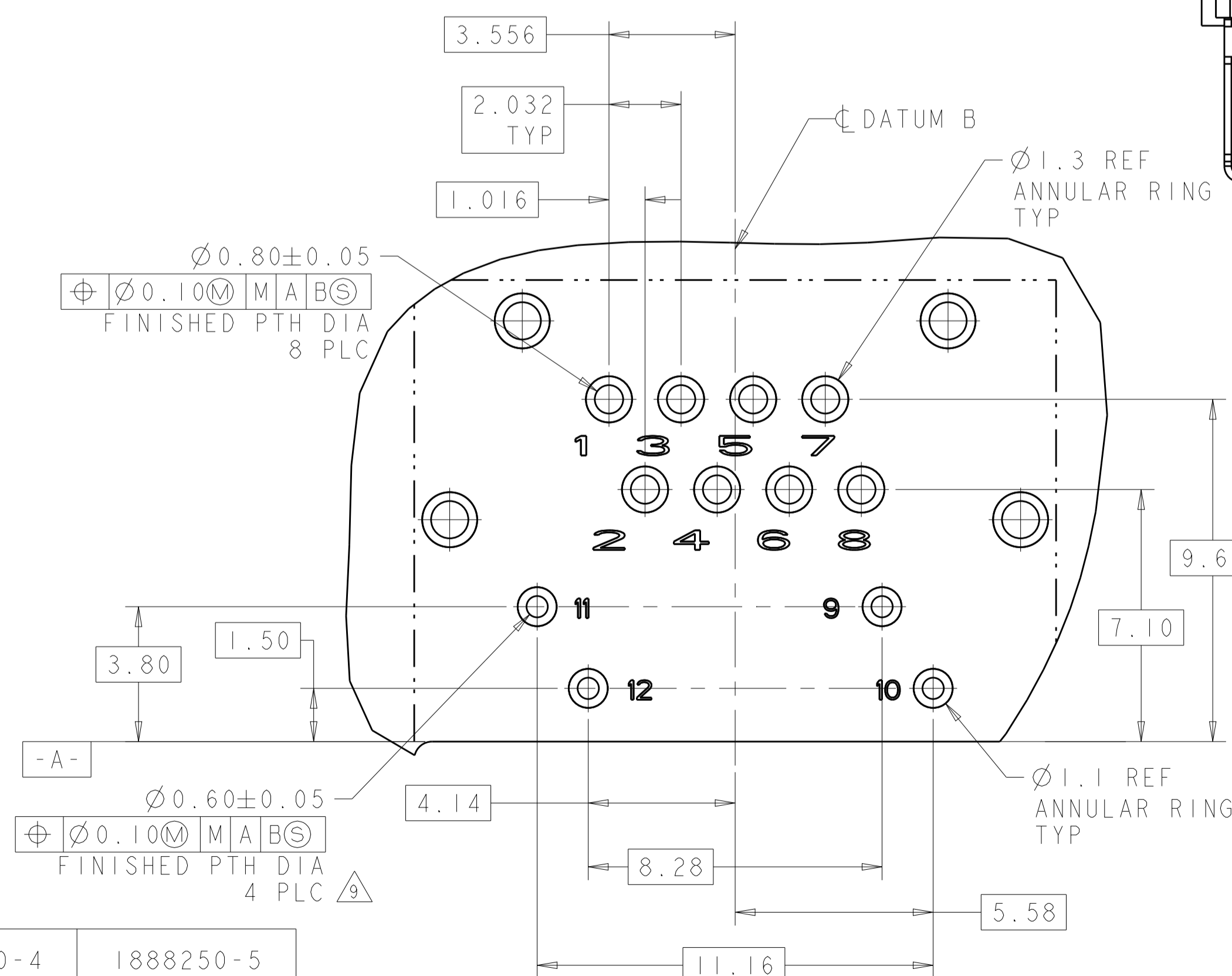
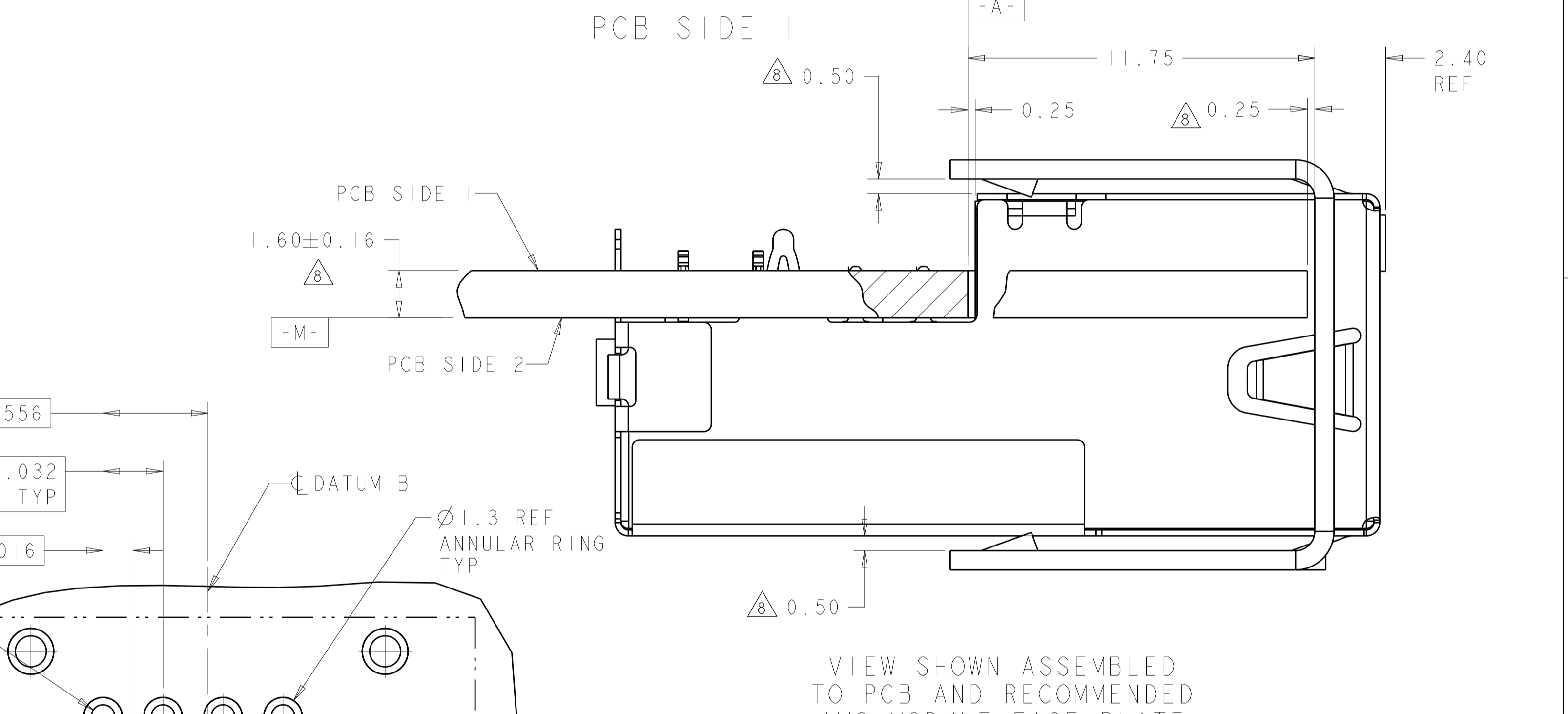
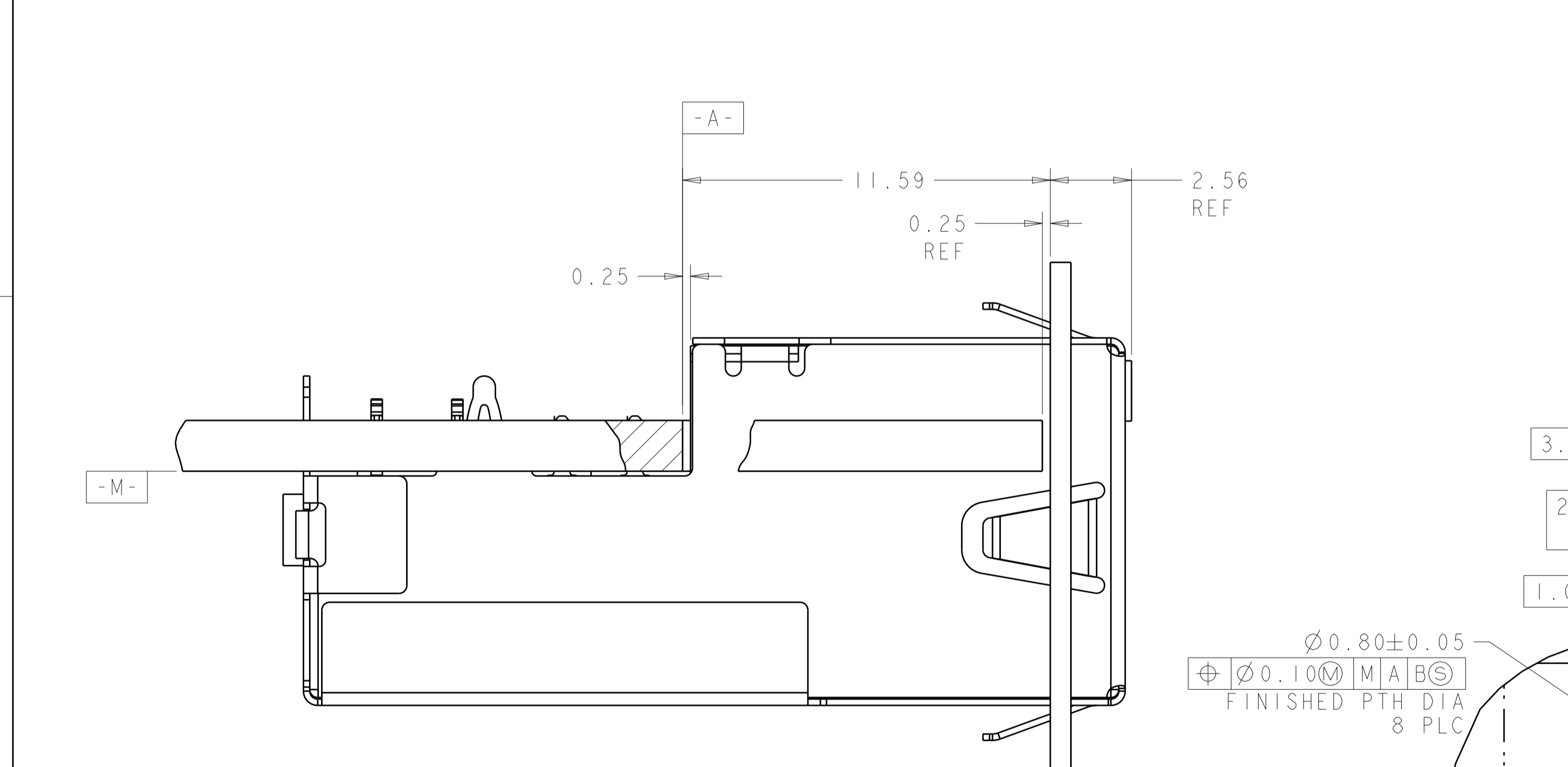
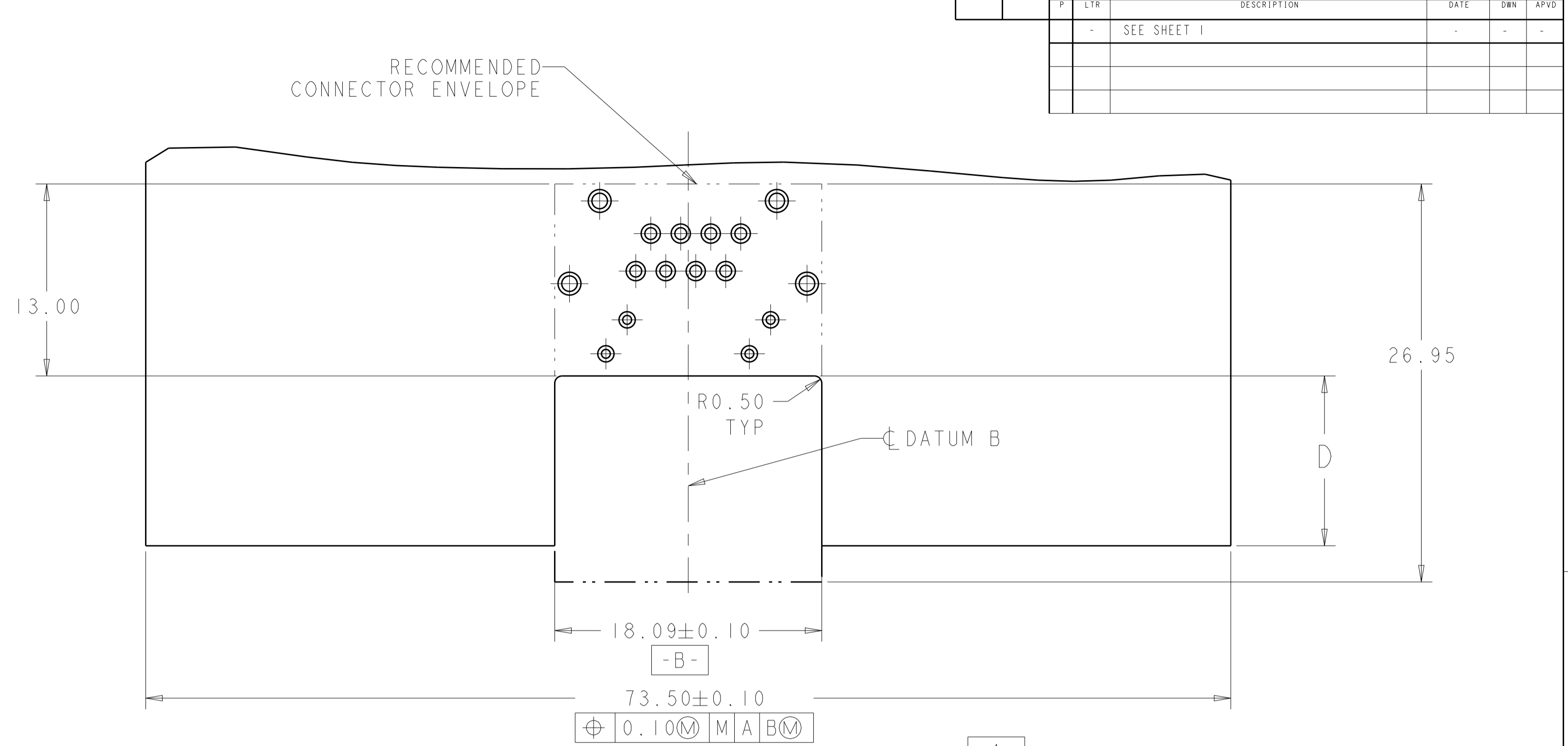
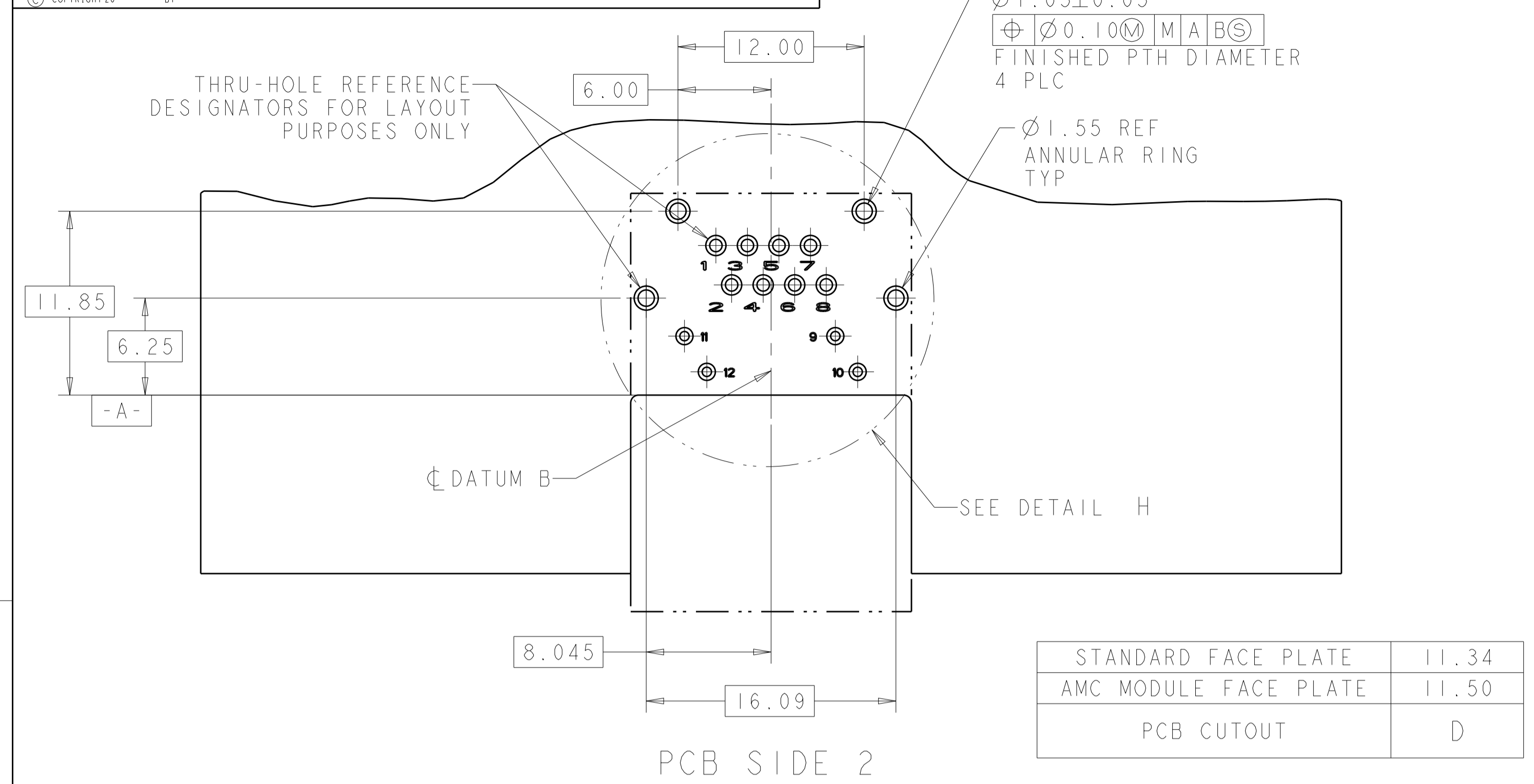
SIZE: 108-2274 APPLICATION SPEC  
114-13179

MATERIAL: SEE NOTE 1 FINISH: SEE NOTE 1

RESTRICTED CUSTOMER

SCALE: 5:1 SHEET 1 OF 3 REV D

| LOC | DIST | REV | DATE | BY | APPV |
|-----|------|-----|------|----|------|
|     |      | 1   |      |    |      |



|       | PIN # | 1888250-1   | 1888250-2<br>1888250-7     | 1888250-3<br>1888250-6 | 1888250-4   | 1888250-5   |
|-------|-------|-------------|----------------------------|------------------------|-------------|-------------|
| LED 1 | 9     | CATHODE (-) | ANODE (YEL), CATHODE (GRN) | -                      | CATHODE (-) | CATHODE (-) |
|       | 10    | ANODE (+)   | ANODE (GRN), CATHODE (YEL) | -                      | ANODE (+)   | ANODE (+)   |
| LED 2 | 11    | ANODE (+)   | ANODE (GRN), CATHODE (YEL) | -                      | ANODE (+)   | ANODE (+)   |
|       | 12    | CATHODE (-) | ANODE (YEL), CATHODE (GRN) | -                      | CATHODE (-) | CATHODE (-) |

THIS DRAWING IS A CONTROLLED DOCUMENT.

OWN: MS/L.A.MAYER 15FEB2008  
 CHK: J.WESTMAN 15FEB2008  
 APVD: S.FLICKINGER 15FEB2008

NAME: CONNECTOR ASSEMBLY, LOW PROFILE, PRESS FIT, MODULAR JACK, IX1, RJ45

PRODUCT SPEC: 108-2274  
 APPLICATION SPEC: 114-13179

SIZE: A1  
 CAGE CODE: 100779  
 DRAWING NO: 1888250

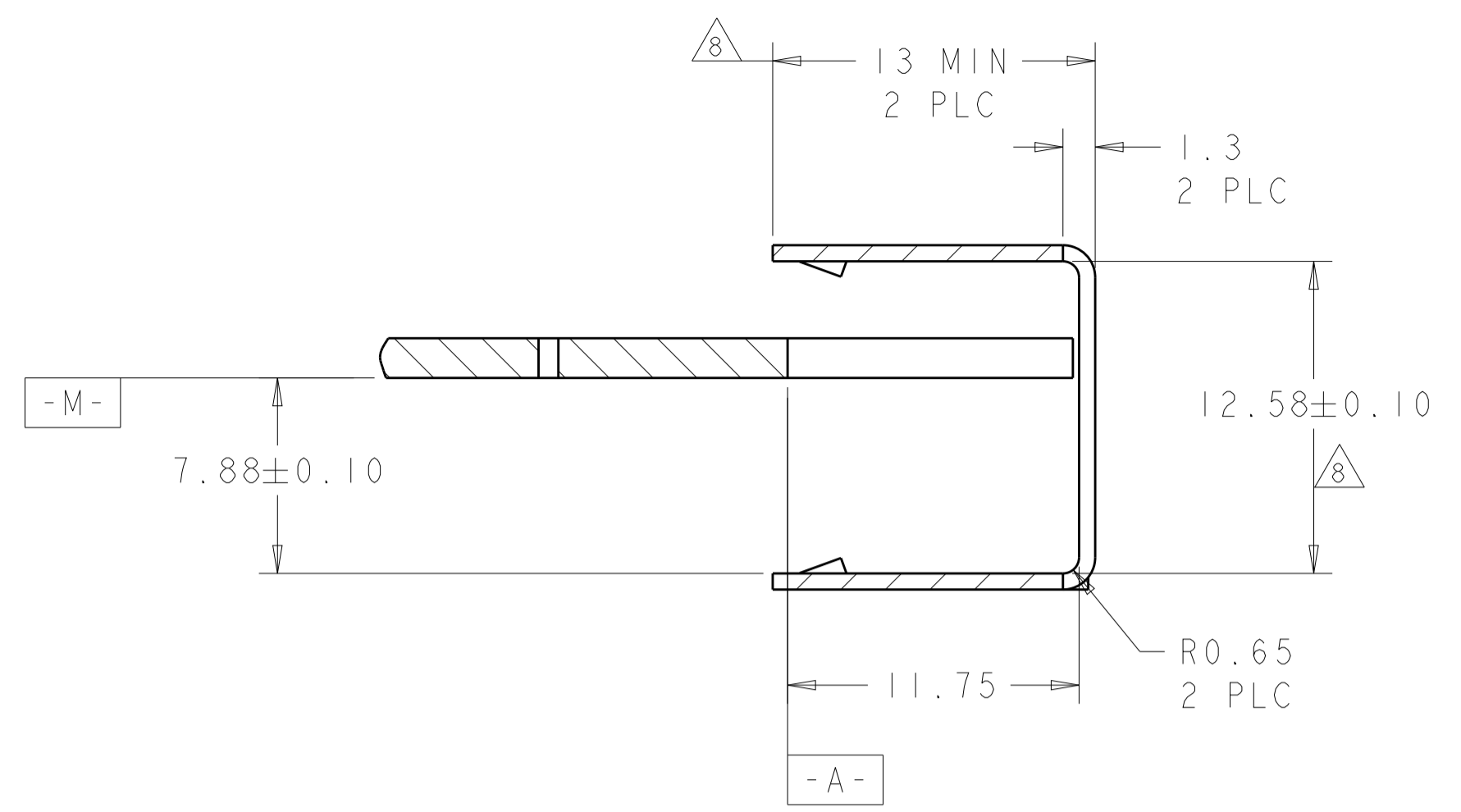
RESTRICTED TO: -

MATERIAL: SEE NOTE 1  
 FINISH: SEE NOTE 1

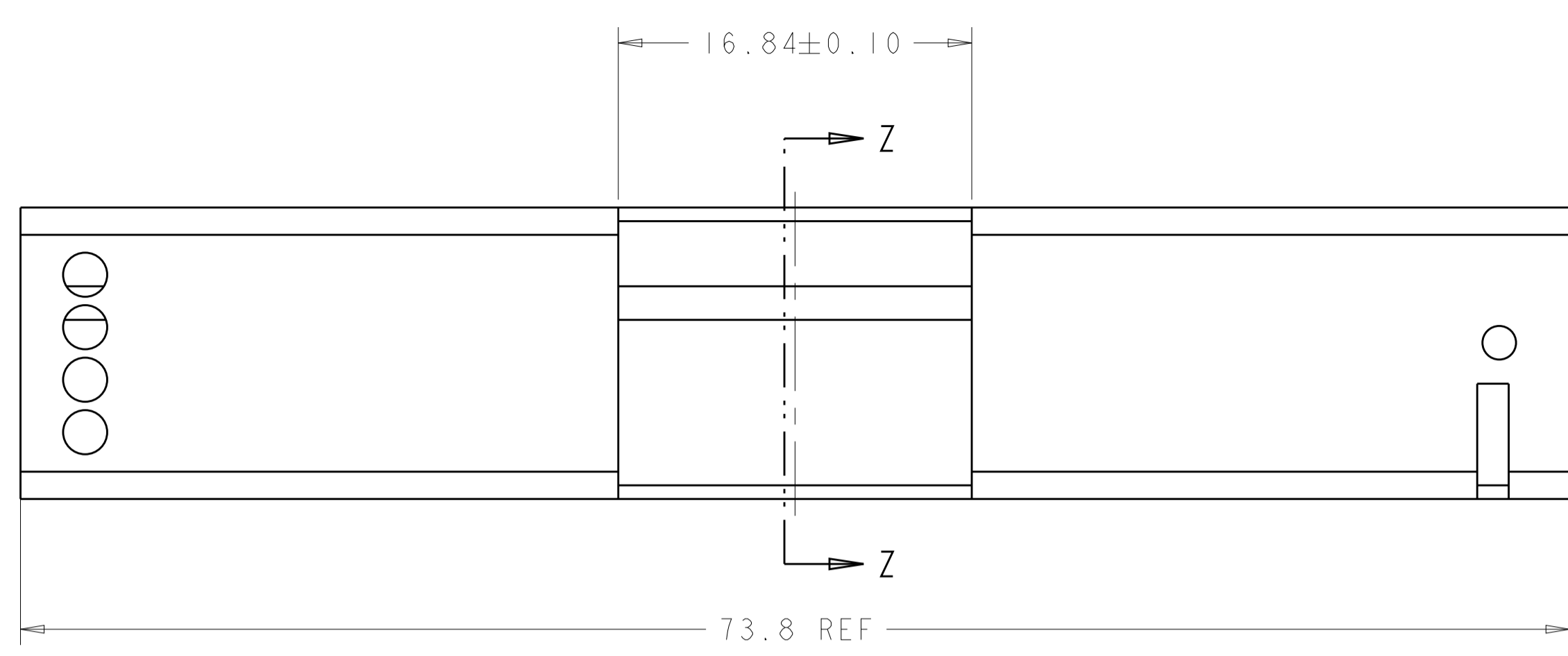
WEIGHT: -  
 CUSTOMER DRAWING

SCALE: 5:1  
 SHEET: 2 OF 3  
 REV: D

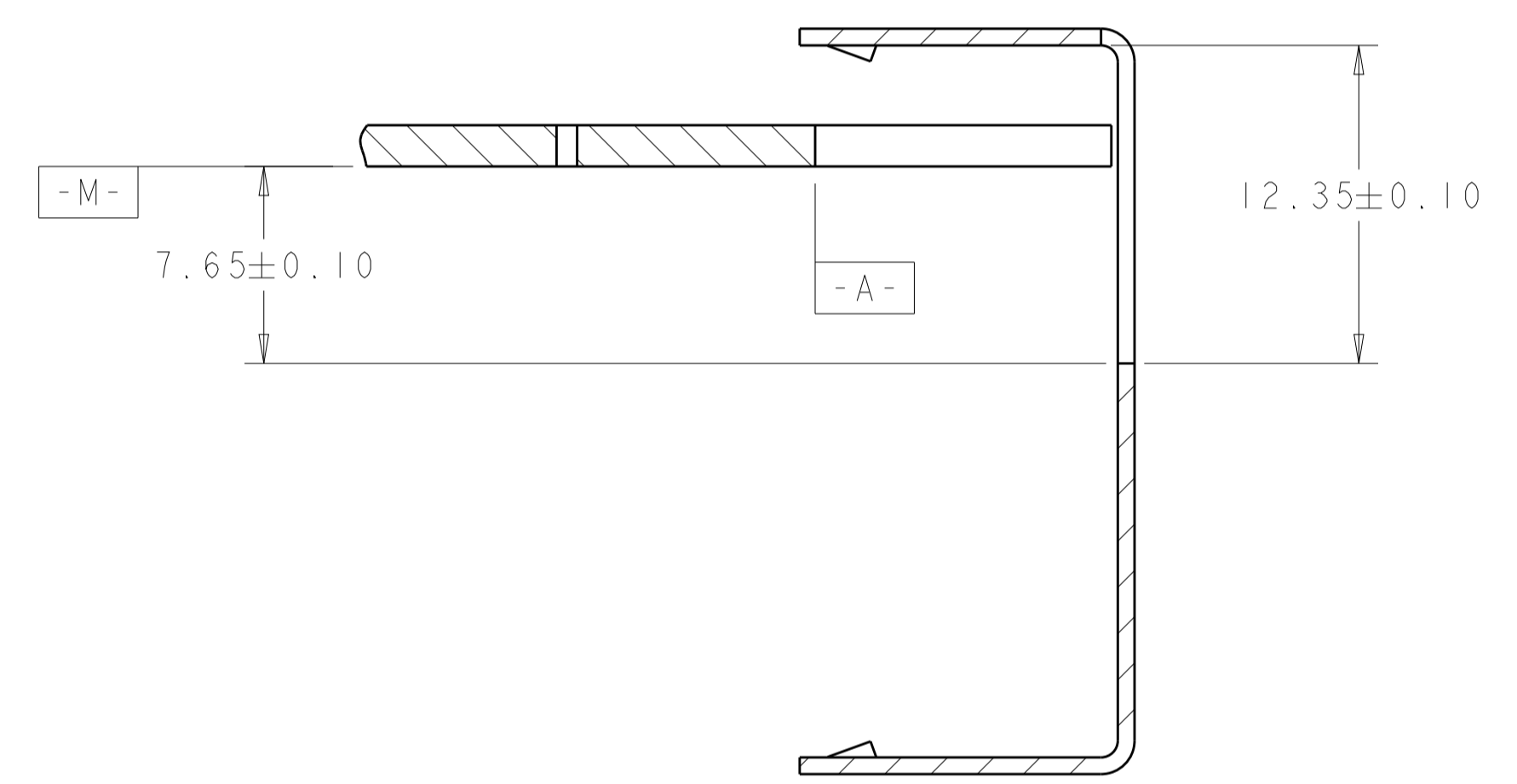
| LOC | DIST | REVISIONS   |      |     |      |
|-----|------|-------------|------|-----|------|
| P   | LTH  | DESCRIPTION | DATE | DWN | APVD |
| -   | -    | SEE SHEET 1 | -    | -   | -    |
|     |      |             |      |     |      |
|     |      |             |      |     |      |



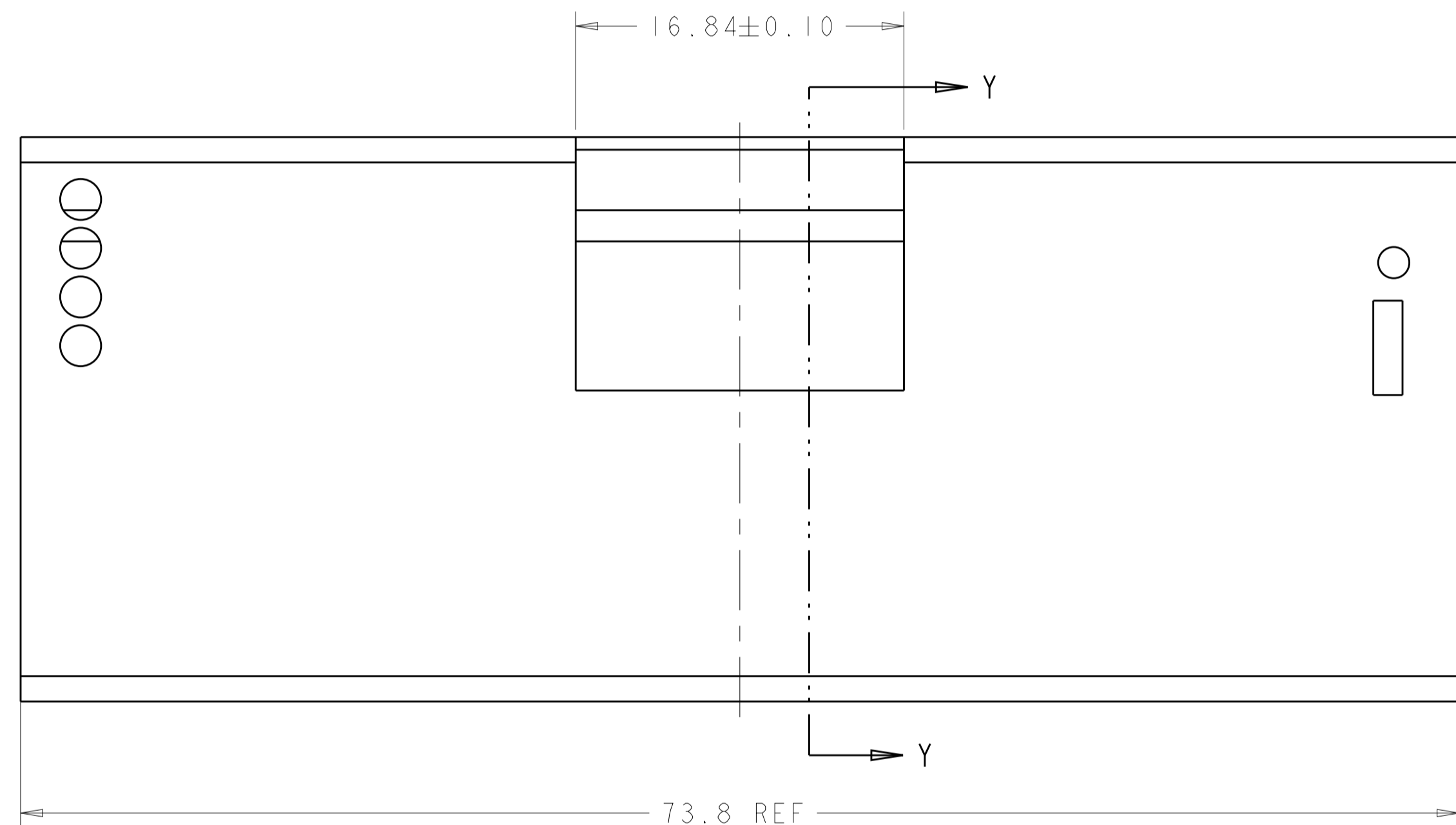
SECTION Z-Z



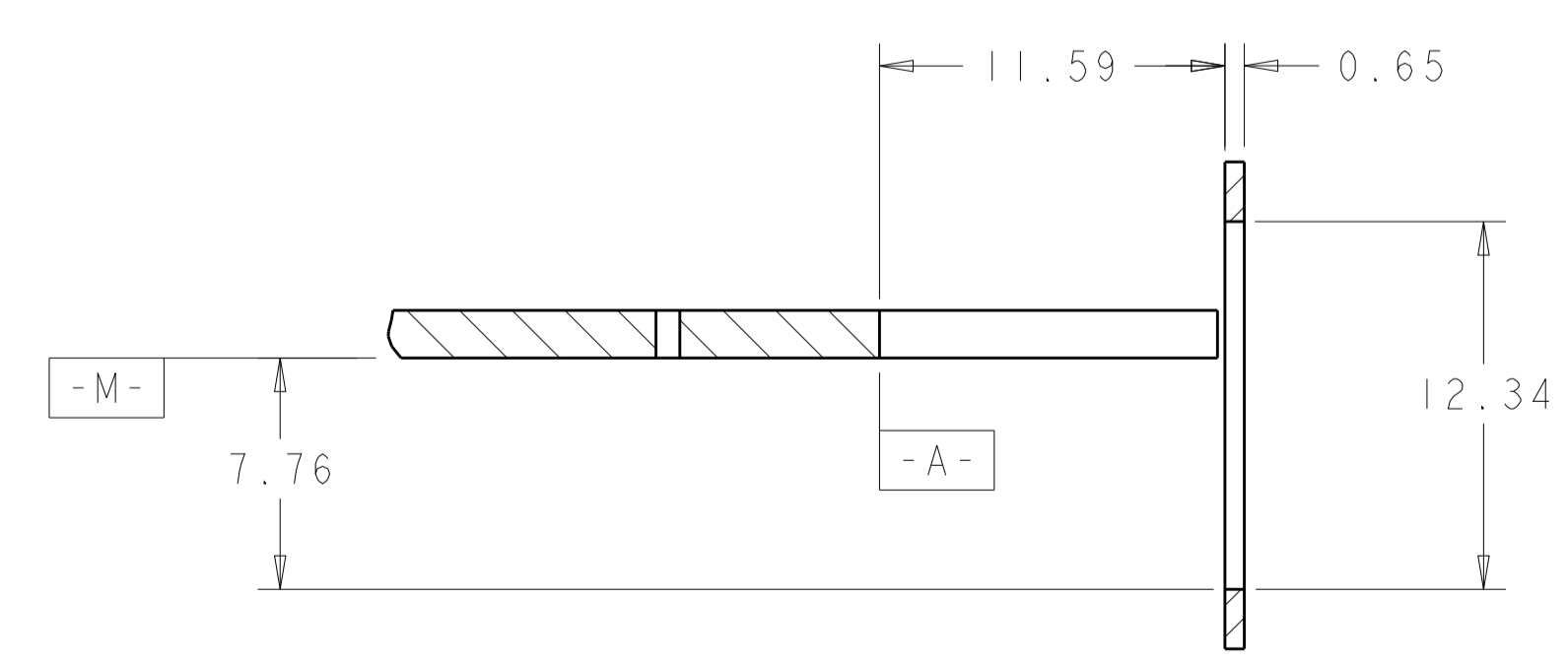
AMC SINGLE WIDTH, HALF HEIGHT MODULE FACE PLATE  
SCALE 4:1



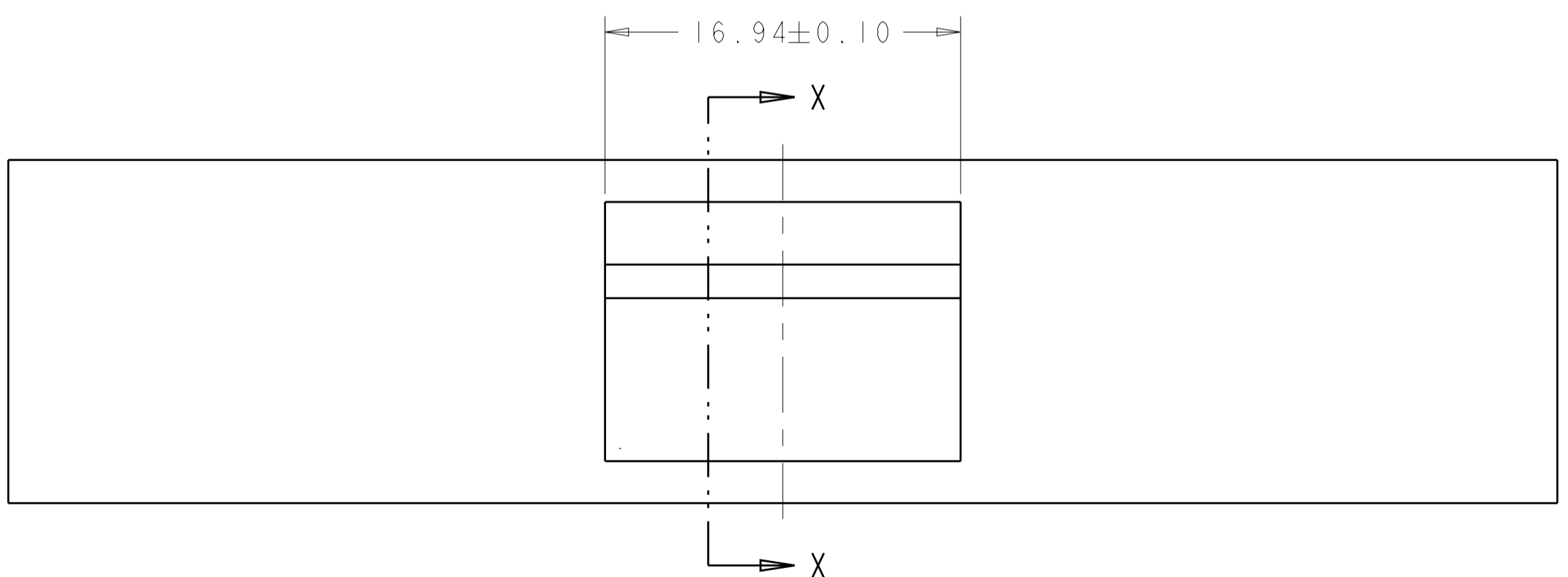
SECTION Y-Y



AMC SINGLE WIDTH, FULL HEIGHT MODULE FACE PLATE  
SCALE 4:1



SECTION X-X



STANDARD FACE PLATE  
SCALE 4:1

|  |  |  |  |
|--|--|--|--|
| THIS DRAWING IS A CONTROLLED DOCUMENT.                               |  | DWN: MS/L.A.MAYER 15FEB2008                          | TE Connectivity  |
| DIMENSIONS: mm   |  | CHK: J.WESTMAN 15FEB2008                             |  |
| TOLERANCES UNLESS OTHERWISE SPECIFIED:                               |  | APVD: S.FLICKINGER 15FEB2008                         | NAME: CONNECTOR ASSEMBLY, LOW PROFILE, PRESS FIT, MODULAR JACK, 1X1, RJ45<br>PRODUCT SPEC: 108-2274<br>APPLICATION SPEC: 114-13179 |
| 0 PLC ±<br>1 PLC ±0.13<br>2 PLC ±<br>3 PLC ±<br>4 PLC ±<br>ANGLES ±° |  | SIZE: A1<br>CAGE CODE: 100779<br>DRAWING NO: 1888250 |  |
| MATERIAL: SEE NOTE 1   |  | FINISH: SEE NOTE 1                                   | RESTRICTED TO: -   |
| CUSTOMER DRAWING   |  | SCALE: 5:1   | SHEET: 3 OF 3  |

# Mouser Electronics

Authorized Distributor

Click to View Pricing, Inventory, Delivery & Lifecycle Information:

[TE Connectivity:](#)

[1888250-2](#)