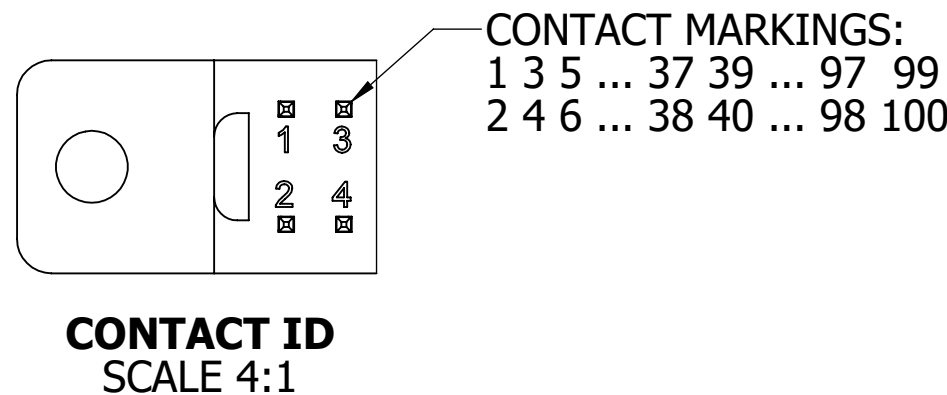


RECOMMENDED PCB LAYOUT

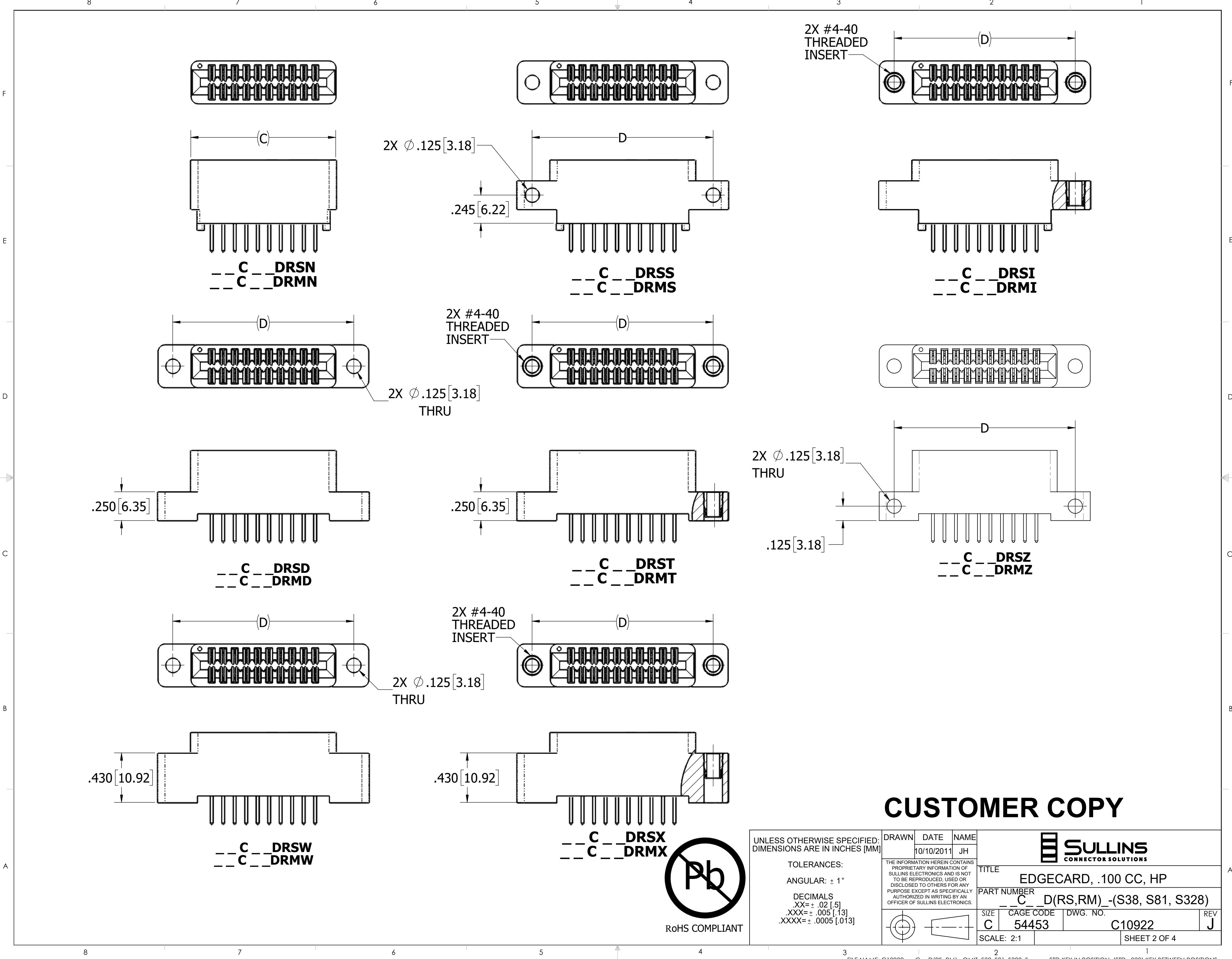


- NOTES:
1. INSULATOR MATERIAL: SEE PART NUMBER CODING
 2. CONTACT MATERIAL: SEE PART NUMBER CODING
 3. PLATING: SEE PART NUMBER CODING
 4. OPERATING TEMPERATURE: SEE PART NUMBER CODING
 5. PROCESSING TEMP: SEE PART NUMBER CODING
 6. UL FLAMMABILITY RATING: 94V-0
 7. OPERATING VOLTAGE: 700 VAC
 8. CURRENT RATING: 3 AMP
 9. CONTACT RESISTANCE: 30 MILLI OHMS MAX
 10. INSULATION RESISTANCE: 5000 MEGA OHMS
 11. DURABILITY: 500 CYCLES MIN
 12. CONNECTOR IDENTIFICATION: THE PART SHALL BE MARKED WITH A PART NUMBER AND LOT CODE
 13. BOARD THICKNESS ACCOMMODATED: .062 ± .008 [1.57 ± 0.20]
 14. INSERTION FORCE: 8 OZ MAX PER CONTACT PAIR WHEN USING A .062 [1.57] TEST BLADE
 15. WITHDRAWAL FORCE: 1 OZ MIN PER CONTACT PAIR USING .062 [1.57] TEST BLADE
 16. MODIFICATION: SEE PART NUMBER CODING



UNLESS OTHERWISE SPECIFIED: DIMENSIONS ARE IN INCHES [MM]		DRAWN	DATE	NAME		
			10/10/2011	JH		
TOLERANCES: ANGULAR: ± 1° DECIMALS .XX = ± .02 [.5] .XXX = ± .005 [.13] .XXXX = ± .0005 [.013]		THE INFORMATION HEREIN CONTAINS PROPRIETARY INFORMATION OF SULLINS ELECTRONICS AND IS NOT TO BE REPRODUCED, USED OR DISCLOSED TO OTHERS FOR ANY PURPOSE EXCEPT AS SPECIFICALLY AUTHORIZED IN WRITING BY AN OFFICER OF SULLINS ELECTRONICS.			TITLE EDGE CARD, .100 CC, HP	
					PART NUMBER _ _ C _ D (RS, RM) _ (S38, S81, S328)	
		SIZE C	CAGE CODE 54453	DWG. NO. C10922	REV J	
		SCALE: 3:1		SHEET 1 OF 4		

CUSTOMER COPY



CUSTOMER COPY


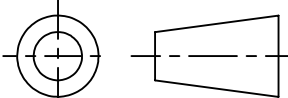
UNLESS OTHERWISE SPECIFIED: DIMENSIONS ARE IN INCHES [MM]		DRAWN	DATE	NAME		
			10/10/2011	JH		
TOLERANCES: ANGULAR: $\pm 1^\circ$ DECIMALS XX = $\pm .02$ [.5] .XXX = $\pm .005$ [.13] .XXXX = $\pm .0005$ [.013]		THE INFORMATION HEREIN CONTAINS PROPRIETARY INFORMATION OF SULLINS ELECTRONICS AND IS NOT TO BE REPRODUCED, USED OR DISCLOSED TO OTHERS FOR ANY PURPOSE EXCEPT AS SPECIFICALLY AUTHORIZED IN WRITING BY AN OFFICER OF SULLINS ELECTRONICS.			TITLE EDGE CARD, .100 CC, HP	
					PART NUMBER _ _ C _ D(RS, RM) _ (S38, S81, S328)	
		SIZE	CAGE CODE	DWG. NO.	REV	
		C	54453	C10922	J	
		SCALE: 2:1		SHEET 2 OF 4		

LOCATION TABLE FOR .030" WIDE KEY BETWEEN POSITIONS***

MOLDED KEY BETWEEN POSITIONS	H±.008[±0.20]		MODIFICATION NUMBER (S#) FOR STD COLOR WITH .030" WIDE KEY BETWEEN POSITIONS ONLY
	INCH	MM	
1 & 2	0.050	1.27	
2 & 3	0.150	3.81	S1663
3 & 4	0.250	6.35	
4 & 5	0.350	8.89	
5 & 6	0.450	11.43	S2381
6 & 7	0.550	13.97	
7 & 8	0.650	16.51	
8 & 9	0.750	19.05	
9 & 10	0.850	21.59	
10 & 11	0.950	24.13	
11 & 12	1.050	26.67	
12 & 13	1.150	29.21	
13 & 14	1.250	31.75	S1951
14 & 15	1.350	34.29	
15 & 16	1.450	36.83	
16 & 17	1.550	39.37	
17 & 18	1.650	41.91	
18 & 19	1.750	44.45	
19 & 20	1.850	46.99	
20 & 21	1.950	49.53	
21 & 22	2.050	52.07	
22 & 23	2.150	54.61	
23 & 24	2.250	57.15	
24 & 25	2.350	59.69	
25 & 26	2.450	62.23	
26 & 27	2.550	64.77	
27 & 28	2.650	67.31	
28 & 28	2.750	69.85	
29 & 30	2.850	72.39	
30 & 31	2.950	74.93	
31 & 32	3.050	77.47	
32 & 33	3.150	80.01	
33 & 34	3.250	82.55	
34 & 35	3.350	85.09	
35 & 36	3.450	87.63	
36 & 37	3.550	90.17	
37 & 38	3.650	92.71	
38 & 39	3.750	95.25	
39 & 40	3.850	97.79	
40 & 41	3.950	100.33	
41 & 42	4.050	102.87	
42 & 43	4.150	105.41	
43 & 44	4.250	107.95	
44 & 45	4.350	110.49	
45& 46	4.450	113.03	
46 & 47	4.550	115.57	
47 & 48	4.650	118.11	
48 & 49	4.750	120.65	
49 & 50	4.850	123.19	
50 & 51	4.950	125.73	
51 & 52	5.050	128.27	
52 & 53	5.150	130.81	
53 & 54	5.250	133.35	
54 & 55	5.350	135.89	
55 & 56	5.450	138.43	
56 & 57	5.550	140.97	
57 & 58	5.650	143.51	
58 & 59	5.750	146.05	

***CONNECTOR TOTAL POSITIONS MUST BE AT LEAST ONE POSITION LONGER THAN KEY LOCATION



UNLESS OTHERWISE SPECIFIED: DIMENSIONS ARE IN INCHES [MM]	DRAWN	DATE	NAME	<div></div>	
		10/10/2011	JH		
TOLERANCES: ANGULAR: ± 1° DECIMALS XX= ± .02 [.5] .XXX= ± .005 [.13] .XXXX= ± .0005 [.013]	THE INFORMATION HEREIN CONTAINS PROPRIETARY INFORMATION OF SULLINS ELECTRONICS AND IS NOT TO BE REPRODUCED, USED OR DISCLOSED TO OTHERS FOR ANY PURPOSE EXCEPT AS SPECIFICALLY AUTHORIZED IN WRITING BY AN OFFICER OF SULLINS ELECTRONICS.			TITLE EDGECARD, .100 CC, HP	
	<div></div>			PART NUMBER __C__D(RS,RM)_(S38, S81, S328)	
	SIZE C	CAGE CODE 54453	DWG. NO. C10922	REV J	
SCALE: 4:1				SHEET 4 OF 4	