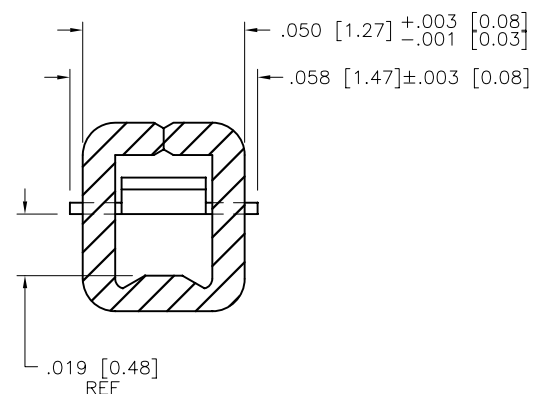
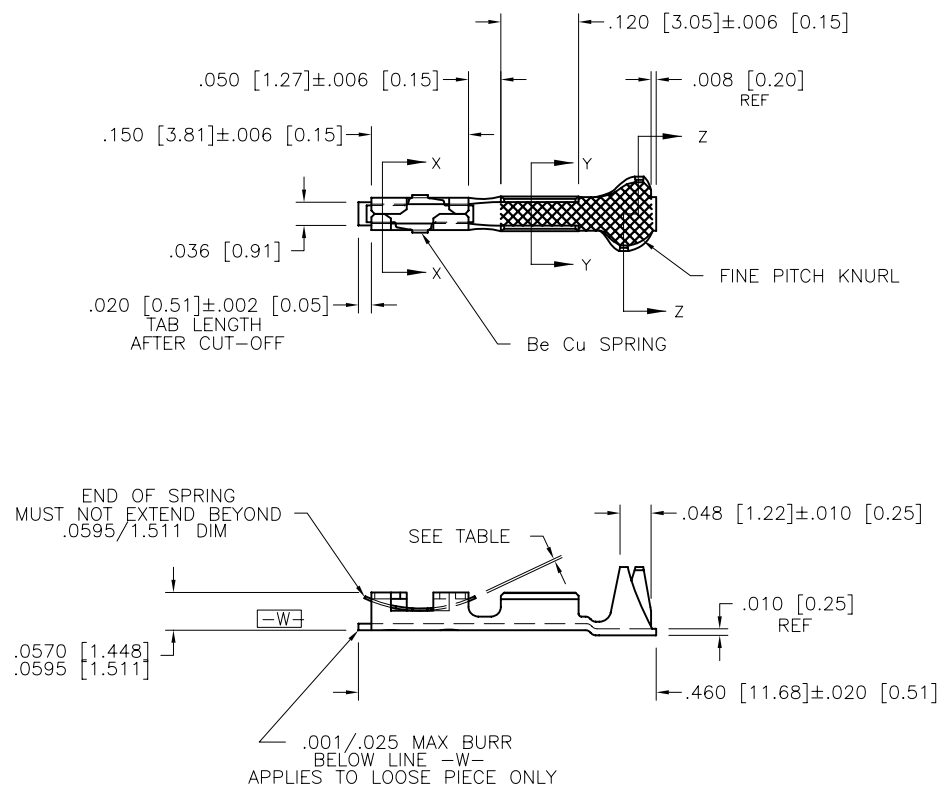
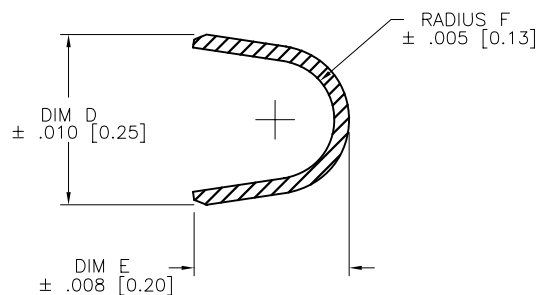
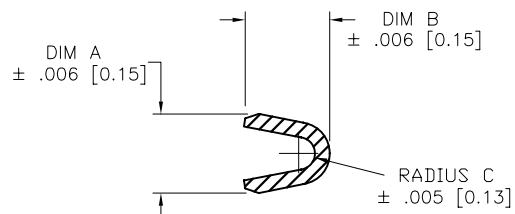


PRODUCT NUMBER

SEE TABLE

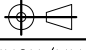



mat'l. code				surface		tolerance	projection	product family	
SEE TABLE								PV TERMINALS	
ltr	ecr no	dr	date	tolerances unless otherwise specified				title	
J	13943	EJK	1987-05-01	angles	to 2'	XX ±.01/XX±3	INCH/MM	MINI PV™ RECEPTACLE CRIMP-TO-WIRE	
K	V60632	EPK	1996-05-10			XXX ±.005/XXX±13			
L	V61310	EPK	1996-10-15			XXXX ±.0020/XXX±.051			
M	V05-0267	VS	2005-03-28	dr	E.J.HALEY	1987-05-01	FCI	dwg no	sheet 1 of 4 size
N	V06-0623	HTB	2006-06-28	enrg	H.SUNDY	1987-05-01		75598	A4
P	V08-0115	HTB	2008-04-03	chr	H.SUNDY	1987-05-01		type CUSTOMER Drawing	
				appd	H.SUNDY	1987-05-01			
sheet index	revision sheet	P	P	P	P				
		1	2	3	4				

PRODUCT NUMBER
 SEE TABLE

 SECTION Z-Z
 INSULATION BARREL
 NOT TO SCALE

 SECTION Y-Y
 WIRE BARREL
 NOT TO SCALE

NOTES

- ① BODY MATERIAL : 1/4 HARD BRASS
 SPRING MATERIAL : Be-Cu #25 HEAT TREATED
 FINISH : GOLD
- ② BODY FINISH : 75u"/1.90u MIN. GOLD OVER 50u"/1.27u MIN.
 NICKEL IN CONTACT AREA. REMAINDER OF PART
 30u"/.76u MIN. GOLD.
- ③ BODY FINISH : 40u"/1.02u MIN. GOLD OVER 50u"/1.27u MIN.
 NICKEL IN CONTACT AREA. REMAINDER OF PART
 30u"/.76u MIN. GOLD.
- ④ BODY FINISH : 150u"/3.81u MIN. GOLD OVER 75u"/1.91u MIN.
 NICKEL IN CONTACT AREA. REMAINDER OF PART
 30u"/.76u MIN. GOLD. SPRING 20u"/.51u Au OVER
 50u"/.27u NICKEL.
5. APPLICABLE SPECIFICATIONS :
 PRODUCT SPECIFICATIONS : BUS-12-067
 APPLICATION SPECIFICATIONS : TA-75, TA-146, TA-210,
 TA-228, TA-295, TA-302, AND TA-328.
6. PART TO MATE WITH .025 [0.64] ±.002 [0.05] SQUARE PIN.
- ⑦ PRODUCT MEETS EUROPEAN UNION DIRECTIVES AND OTHER
 COUNTRY REGULATIONS AS DESCRIBED IN GS-22-008.
8. THIS PRODUCT IS NOT INTENDED TO BE EXPOSED
 TO MANUFACTURING SOLDERING PROCESSES.

mat'l. code SEE TABLE				surface	tolerance	projection	product family PV TERMINALS		
ltr	ecr no	dr	date	tolerances unless otherwise specified			title		
P				angles	XX ±.01/XX±3 XXX ±.005/XX±13	INCH/MM	MINI PV™ RECEPTACLE CRIMP-TO-WIRE		
				0° ±2°	XXXX ±.0020/XXX±.051	scale 1:1			
				dr	E.J.HALEY 1987-05-01		dwg no	sheet 2 of 4	size
				enrg	H.SUNDY 1987-05-01		75598		A4
				chr	H.SUNDY 1987-05-01		type CUSTOMER Drawing		
				appd	H.SUNDY 1987-05-01				
sheet index	revision sheet								



FCIconnect.com

FCI CONFIDENTIAL

1 | 2

3 |

4

PRODUCT NUMBERS	STYLE	SPRING THICKNESS	WIRE BARREL			INSULATION BARREL				PLATING	
			WIRE RANGE	DIM A	DIM B	RADIUS C	INS. DIA RANGE	DIM D	DIM E	RADIUS F	
75598-001						O B S O L E T E					
75598-001LF	REELED	.005/0.13	22-26	.070/1.78	.070/1.78	.017/0.43	.036/0.91-.103/2.62	.139/3.53	.120/3.05	.050/1.27	NOTE 2
75598-002						O B S O L E T E					
75598-002LF	REELED	.005/0.13	28-32	.054/1.37	.058/1.47	.011/0.28	.028/0.71-.054/1.37	.115/2.92	.105/2.67	.040/1.02	NOTE 3
75598-003						O B S O L E T E					
75598-003LF	REELED	.005/0.13	22-26	.070/1.78	.070/1.78	.017/0.43	.036/0.91-.103/2.62	.139/3.53	.120/3.05	.050/1.27	NOTE 3
75598-004						O B S O L E T E					
75598-004LF	REELED	.005/0.13	18-20	.104/2.64	.104/2.64	.021/0.53	.042/1.07-.103/2.62	.139/3.53	.120/3.05	.050/1.27	NOTE 3
75598-005						O B S O L E T E					
75598-005LF	REELED	.0065/0.165	18-20	.104/2.64	.104/2.64	.021/0.53	.042/1.07-.103/2.62	.139/3.53	.120/3.05	.050/1.27	NOTE 3
75598-006						O B S O L E T E					
75598-006LF	LOOSE PIECE	.005/0.13	22-26	.070/1.78	.070/1.78	.017/0.43	.036/0.91-.103/2.62	.139/3.53	.120/3.05	.050/1.27	NOTE 2
75598-007						O B S O L E T E					
75598-007LF	LOOSE PIECE	.005/0.13	28-32	.054/1.37	.058/1.47	.011/0.28	.028/0.71-.054/1.37	.115/2.92	.105/2.67	.040/1.02	NOTE 3
75598-008						O B S O L E T E					
75598-008LF	LOOSE PIECE	.005/0.13	22-26	.070/1.78	.070/1.78	.017/0.43	.036/0.91-.103/2.62	.139/3.53	.120/3.05	.050/1.27	NOTE 3
75598-009						O B S O L E T E					
75598-009LF	LOOSE PIECE	.005/0.13	18-20	.104/2.64	.104/2.64	.021/0.53	.042/1.07-.103/2.62	.139/3.53	.120/3.05	.050/1.27	NOTE 3
75598-010						O B S O L E T E					
75598-010LF	LOOSE PIECE	.0065/0.165	18-20	.104/2.64	.104/2.64	.021/0.53	.042/1.07-.103/2.62	.139/3.53	.120/3.05	.050/1.27	NOTE 3
75598-011						O B S O L E T E					
75598-011LF	REELED	.0035/0.089	18-20	.104/2.64	.104/2.64	.021/0.53	.042/1.07-.103/2.62	.139/3.53	.120/3.05	.050/1.27	NOTE 2
75598-012						O B S O L E T E					
75598-012LF	REELED	.0035/0.089	22-26	.070/1.78	.070/1.78	.017/0.43	.036/0.91-.103/2.62	.139/3.53	.120/3.05	.050/1.27	NOTE 2
75598-013						O B S O L E T E					
75598-013LF	REELED	.0035/0.089	28-32	.054/1.37	.058/1.47	.011/0.28	.028/0.71-.054/1.37	.115/2.92	.105/2.67	.040/1.02	NOTE 2
75598-014						O B S O L E T E					
75598-014LF	REELED	.005/0.13	18-20	.104/2.64	.104/2.64	.021/0.53	.042/1.07-.103/2.62	.139/3.53	.120/3.05	.050/1.27	NOTE 2
75598-015						O B S O L E T E					
75598-015LF	REELED	.005/0.13	28-32	.054/1.37	.058/1.47	.011/0.28	.028/0.71-.054/1.37	.115/2.92	.105/2.67	.040/1.02	NOTE 2
75598-016						O B S O L E T E					
75598-016LF	REELED	.0065/0.165	18-20	.104/2.64	.104/2.64	.021/0.53	.042/1.07-.103/2.62	.139/3.53	.120/3.05	.050/1.27	NOTE 2
75598-017						O B S O L E T E					
75598-017LF	REELED	.0065/0.165	22-26	.070/1.78	.070/1.78	.017/0.43	.036/0.91-.103/2.62	.139/3.53	.120/3.05	.050/1.27	NOTE 2
75598-018						O B S O L E T E					
75598-018LF	REELED	.0065/0.165	28-32	.054/1.37	.058/1.47	.011/0.28	.028/0.71-.054/1.37	.115/2.92	.105/2.67	.040/1.02	NOTE 3
75598-019						O B S O L E T E					
75598-019LF	REELED	.0035/0.089	18-20	.104/2.64	.104/2.64	.021/0.53	.042/1.07-.103/2.62	.139/3.53	.120/3.05	.050/1.27	NOTE 3
75598-020						O B S O L E T E					
75598-020LF	REELED	.0035/0.089	22-26	.070/1.78	.070/1.78	.017/0.43	.042/1.07-.103/2.62	.139/3.53	.120/3.05	.050/1.27	NOTE 3

mat'l. code
SEE TABLE

ltr ecn no dr date

P

angles

dr E.J.HALEY 1987-05-01

enrg H.SUNDY 1987-05-01

chr H.SUNDY 1987-05-01

appd H.SUNDY 1987-05-01

sheet index

revision sheet

surface ☒ tolerance

tolerances unless otherwise specified

XX ±.01/XX±.3

XXX ±.005/XX±.13

0" ±.2" XXXX ±.0020/XXX±.051

dr E.J.HALEY 1987-05-01

enrg H.SUNDY 1987-05-01

chr H.SUNDY 1987-05-01

appd H.SUNDY 1987-05-01

projection

INCH/MM

scale 1:1

product family

PV TERMINALS

title

MINI PV™ RECEPTACLE CRIMP-TO-WIRE

dwg no

75598

sheet 3 of 4

size

A4

type

CUSTOMER Drawing

FCI

LOOSE PIECE VERS. OF -001
LOOSE PIECE VERS. OF -001LF
LOOSE PIECE VERS. OF -002
LOOSE PIECE VERS. OF -002LF
LOOSE PIECE VERS. OF -003
LOOSE PIECE VERS. OF -003LF
LOOSE PIECE VERS. OF -004
LOOSE PIECE VERS. OF -004LF
LOOSE PIECE VERS. OF -005
LOOSE PIECE VERS. OF -005LF



FCIconnect.com

FCI CONFIDENTIAL

1 | 2

3 |

4

PRODUCT NUMBERS	STYLE	SPRING THICKNESS	WIRE BARREL			INSULATION BARREL				PLATING	
			WIRE RANGE	DIM A	DIM B	RADIUS C	INS. DIA RANGE	DIM D	DIM E	RADIUS F	
75598-021						O B S O L E T E					
75598-021LF	REELED	.0035/0.089	28-32	.054/1.37	.058/1.47	.011/0.28	.028/0.71-.054/1.37	.115/2.92	.105/2.67	.040/1.02	NOTE 3
75598-022						O B S O L E T E					
75598-022LF	REELED	.0065/0.165	22-26	.070/1.78	.070/1.78	.017/0.43	.036/0.91-.103/2.62	.139/3.53	.120/3.05	.050/1.27	NOTE 3
75598-023						O B S O L E T E					
75598-023LF	REELED	.0065/0.165	28-32	.054/1.37	.058/1.47	.011/0.28	.028/0.71-.054/1.37	.115/2.92	.105/2.67	.040/1.02	NOTE 3
75598-024						O B S O L E T E					
75598-024LF	LOOSE PIECE	.0035/0.089	18-20	.104/2.64	.104/2.64	.021/0.53	.042/1.07-.103/2.62	.139/3.53	.120/3.05	.050/1.27	NOTE 2
75598-025						O B S O L E T E					
75598-025LF	LOOSE PIECE	.0035/0.089	22-26	.070/1.78	.070/1.78	.017/0.43	.036/0.91-.103/2.62	.139/3.53	.120/3.05	.050/1.27	NOTE 2
75598-026						O B S O L E T E					
75598-026LF	LOOSE PIECE	.0035/0.089	28-32	.054/1.37	.058/1.47	.011/0.28	.028/0.71-.054/1.37	.115/2.92	.105/2.67	.040/1.02	NOTE 2
75598-027						O B S O L E T E					
75598-027LF	LOOSE PIECE	.005/0.13	18-20	.104/2.64	.104/2.64	.021/0.53	.042/1.07-.103/2.62	.139/3.53	.120/3.05	.050/1.27	NOTE 2
75598-028						O B S O L E T E					
75598-028LF	LOOSE PIECE	.005/0.13	28-32	.054/1.37	.058/1.47	.011/0.28	.028/0.71-.054/1.37	.115/2.92	.105/2.67	.040/1.02	NOTE 2
75598-029						O B S O L E T E					
75598-029LF	LOOSE PIECE	.0065/0.165	18-20	.104/2.64	.104/2.64	.021/0.53	.042/1.07-.103/2.62	.139/3.53	.120/3.05	.050/1.27	NOTE 2
75598-030						O B S O L E T E					
75598-030LF	LOOSE PIECE	.0065/0.165	22-26	.070/1.78	.070/1.78	.017/0.43	.036/0.91-.103/2.62	.139/3.53	.120/3.05	.050/1.27	NOTE 2
75598-031						O B S O L E T E					
75598-031LF	LOOSE PIECE	.0065/0.165	28-32	.054/1.37	.058/1.47	.011/0.28	.028/0.71-.054/1.37	.115/2.92	.105/2.67	.040/1.02	NOTE 2
75598-032						O B S O L E T E					
75598-032LF	LOOSE PIECE	.0035/0.089	18-20	.104/2.64	.104/2.64	.021/0.53	.042/1.07-.103/2.62	.139/3.53	.120/3.05	.050/1.27	NOTE 3
75598-033						O B S O L E T E					
75598-033LF	LOOSE PIECE	.0035/0.089	22-26	.070/1.78	.070/1.78	.017/0.43	.042/1.07-.103/2.62	.139/3.53	.120/3.05	.050/1.27	NOTE 3
75598-034						O B S O L E T E					
75598-034LF	LOOSE PIECE	.0035/0.089	28-32	.054/1.37	.058/1.47	.011/0.28	.028/0.71-.054/1.37	.115/2.92	.105/2.67	.040/1.02	NOTE 3
75598-035						O B S O L E T E					
75598-035LF	LOOSE PIECE	.0065/0.165	22-26	.070/1.78	.070/1.78	.017/0.43	.036/0.91-.103/2.62	.139/3.53	.120/3.05	.050/1.27	NOTE 3
75598-036						O B S O L E T E					
75598-036LF	LOOSE PIECE	.0065/0.165	28-32	.054/1.37	.058/1.47	.011/0.28	.028/0.71-.054/1.37	.115/2.92	.105/2.67	.040/1.02	NOTE 3
75598-037						O B S O L E T E					
75598-037LF	REELED	.0048/0.122	22-26	.070/1.78	.070/1.78	.017/0.43	.036/0.91-.103/2.62	.139/3.53	.120/3.05	.050/1.27	NOTE 4
75598-038						O B S O L E T E					
75598-038LF	REELED	.0048/0.122	32-36	.054/1.37	.046/1.17	.010/0.25	.020/0.51-.040/1.02	.067/1.70	.061/1.55	.020/0.51	NOTE 4
75598-039						O B S O L E T E					
75598-039LF	REELED	.0048/0.122	32-36	.054/1.37	.046/1.17	.010/0.25	.020/0.51-.040/1.02	.067/1.70	.061/1.55	.020/0.51	NOTE 2

mat'l. code
SEE TABLE

surface ☒ tolerance

projection

product family
PV TERMINALS

tolerances unless otherwise specified

angles

XX ±01/XX±3
XXX ±.005/XX±.13
XXXX ±.0020/XXX±.051

INCH/MM

scale 1:1

title
MINI PV™ RECEPTACLE
CRIMP-TO-WIRE

dwg no 75598 sheet 4 of 4 size A4

type CUSTOMER Drawing

dr T. BREWBAKER 2008-04-03

engr T. BREWBAKER 2008-04-03

chr T. BREWBAKER 2008-04-03

appd T. BREWBAKER 2008-04-03

sheet index

revision sheet

LOOSE PIECE VERS. OF -011
LOOSE PIECE VERS. OF -011LF
LOOSE PIECE VERS. OF -012
LOOSE PIECE VERS. OF -012LF
LOOSE PIECE VERS. OF -013
LOOSE PIECE VERS. OF -013LF
LOOSE PIECE VERS. OF -014
LOOSE PIECE VERS. OF -014LF
LOOSE PIECE VERS. OF -015
LOOSE PIECE VERS. OF -015LF
LOOSE PIECE VERS. OF -016
LOOSE PIECE VERS. OF -016LF
LOOSE PIECE VERS. OF -017
LOOSE PIECE VERS. OF -017LF
LOOSE PIECE VERS. OF -018
LOOSE PIECE VERS. OF -018LF
LOOSE PIECE VERS. OF -019
LOOSE PIECE VERS. OF -019LF
LOOSE PIECE VERS. OF -020
LOOSE PIECE VERS. OF -020LF
LOOSE PIECE VERS. OF -021
LOOSE PIECE VERS. OF -021LF
LOOSE PIECE VERS. OF -022
LOOSE PIECE VERS. OF -022LF
LOOSE PIECE VERS. OF -023
LOOSE PIECE VERS. OF -023LF

Mouser Electronics

Authorized Distributor

Click to View Pricing, Inventory, Delivery & Lifecycle Information:

[FCI / Amphenol:](#)

[75598-008LF](#) [75598-002LF](#)