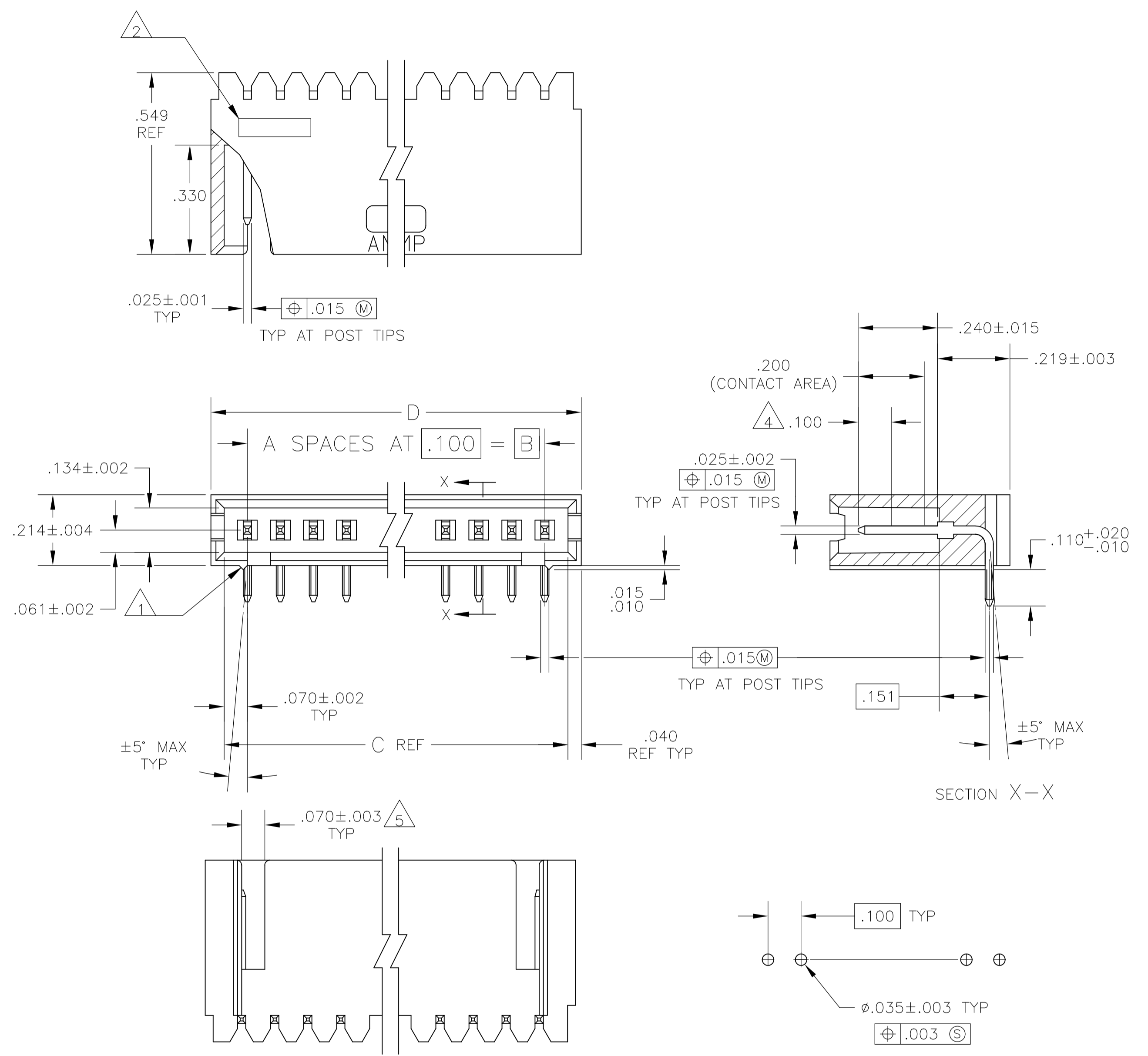


REVISIONS				
P	LTR	DESCRIPTION	DATE	APP'D
N3		PART STATUS UPDATED IN PART LIST TABLE	16FEB2018	SD PS



PLATING	D	C	B	A	NO. OF POSN.	PART NO.	
△ OBSOLETE					24	25	-7-103361-3
△					23	24	7-103361-2
△ OBSOLETE					22	23	-7-103361-1
△					21	22	-7-103361-0
△					20	21	-6-103361-9
△					19	20	6-103361-8
△ OBSOLETE					18	19	-6-103361-7
△					17	18	-6-103361-6
△					16	17	-6-103361-5
△					15	16	6-103361-4
△ OBSOLETE					14	15	-6-103361-3
△					13	14	6-103361-2
△ OBSOLETE					12	13	-6-103361-1
△					11	12	6-103361-0
△ OBSOLETE					10	11	-5-103361-9
△					9	10	5-103361-8
△					8	9	5-103361-7
△					7	8	5-103361-6
△					6	7	5-103361-5
△					5	6	5-103361-4
△					4	5	5-103361-3
△					3	4	5-103361-2
△					2	3	5-103361-1
△					35	36	3-103361-4
△					34	35	3-103361-3
△					33	34	3-103361-2
△					32	33	3-103361-1
△					31	32	3-103361-0
△					30	31	2-103361-9
△ OBSOLETE					29	30	2-103361-8
△					28	29	2-103361-7
△					27	28	2-103361-6
△					26	27	2-103361-5
△					25	26	2-103361-4
△					24	25	2-103361-3
△					23	24	2-103361-2
△ OBSOLETE					22	23	-2-103361-1
△					21	22	-2-103361-0
△					20	21	-1-103361-9
△					19	20	1-103361-8
△ OBSOLETE					18	19	-1-103361-7
△					17	18	-1-103361-6
△					16	17	-1-103361-5
△					15	16	1-103361-4
△					14	15	-1-103361-3
△					13	14	1-103361-2
△					12	13	1-103361-1
△					11	12	1-103361-0
△ OBSOLETE					10	11	-103361-9
△					9	10	103361-8
△					8	9	103361-7
△					7	8	103361-6
△					6	7	103361-5
△					5	6	103361-4
△					4	5	103361-3
△					3	4	103361-2
△					2	3	103361-1

- 1 STANDOFFS:
3 TRHU 9 POSN - (2 REQD) ON OUTSIDE ENDS OF HOUSING
10 THRU 18 POSN - (3 REQD) TWO ON OUTSIDE ENDS AND ONE CENTERED ON HOUSING
19 POSN AND LARGER - (4 REQD) TWO ON OUTSIDE ENDS AND TWO EVENLY SPACED WITHIN REMAINING LENGTH OF HOUSING
- 2 RECESSED DATE CODE
- 3 .000030 GOLD IN CONTACT AREA, .000100-.000200 MATTE TIN-LEAD IN SOLDER AREA, ALL OVER .000050 MIN NICKEL
- 4 POINT OF MEASUREMENT FOR GOLD PLATING THICKNESS
- 5 FOR 3 POS ONLY, ONE SLOT .215 WIDE.
- 6 .000030 GOLD IN CONTACT AREA, .000100-.000200 MATTE TIN IN SOLDER AREA, ALL OVER .000050 MIN NICKEL
- 7 OBSOLETE PARTS: OBSOLETE CIS STREAMLINING PER D.RENAUD/D.SINISI

THIS DRAWING IS A CONTROLLED DOCUMENT.

DWN S.A. SHUEY 28SEP89
DW H. MOLL 30CT89
APVD R. FLICKER 30CT89

STE TE Connectivity

PRODUCT SPEC: HEADER ASSEMBLY, MOD II, SINGLE ROW .100 CL, RIGHT ANGLE

APPLICATION SPEC: -

SIZE: A1 CAGE CODE: 00779 DRAWING NO: 103361

RESTRICTED TO: -

MATERIAL HOUSING: FLAME RETARDANT THERMOPLASTIC COLOR: BLACK POSTS: PHOS BRONZE FINISH: SEE TABLE WEIGHT: -

CUSTOMER DRAWING SCALE: 4:1 SHEET: 1 OF 1 REV: N3

Mouser Electronics

Authorized Distributor

Click to View Pricing, Inventory, Delivery & Lifecycle Information:

[TE Connectivity:](#)

[7-103361-2](#)