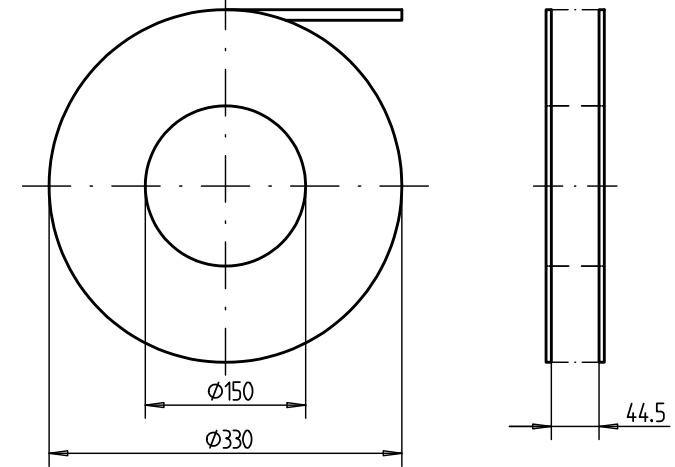
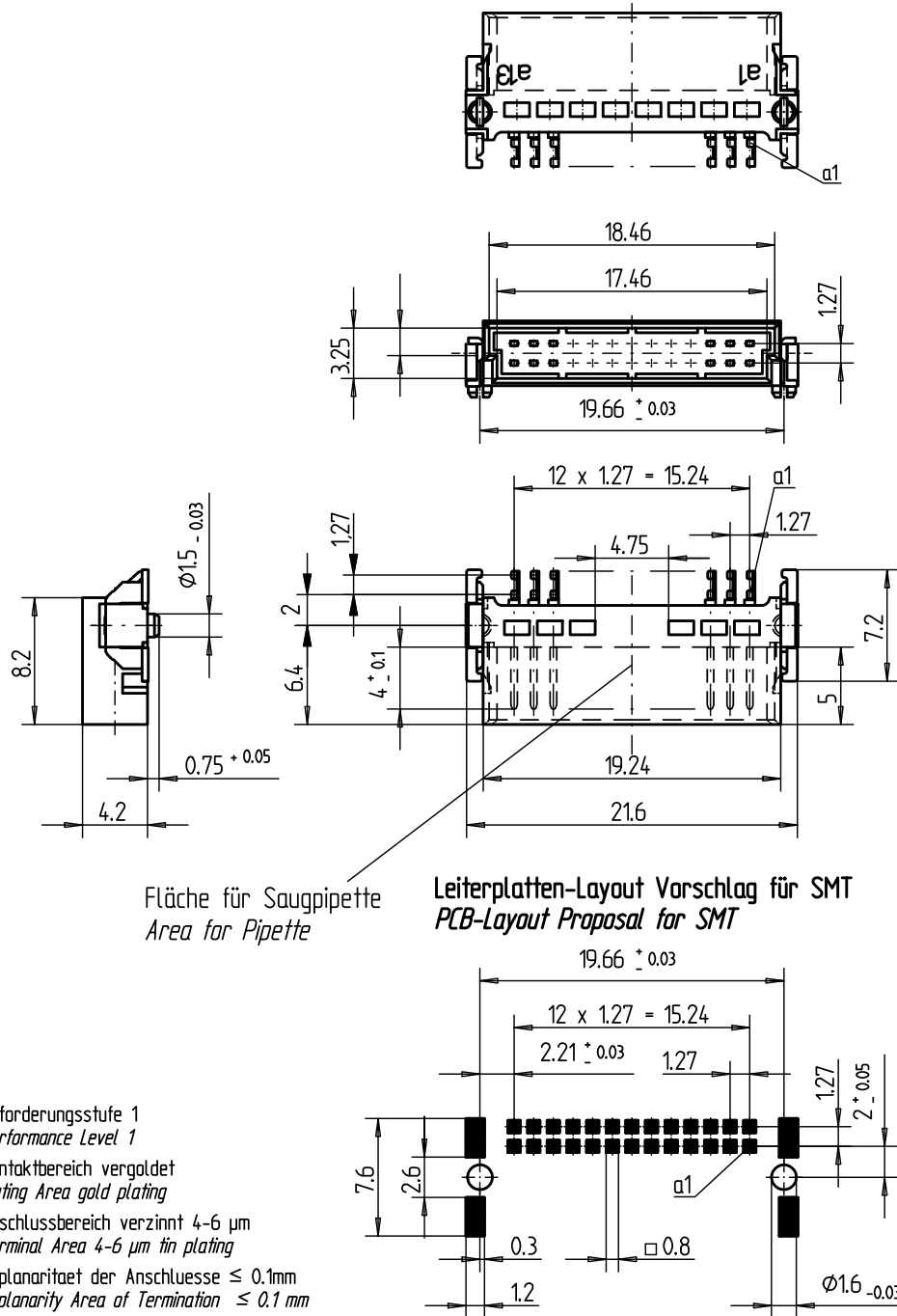
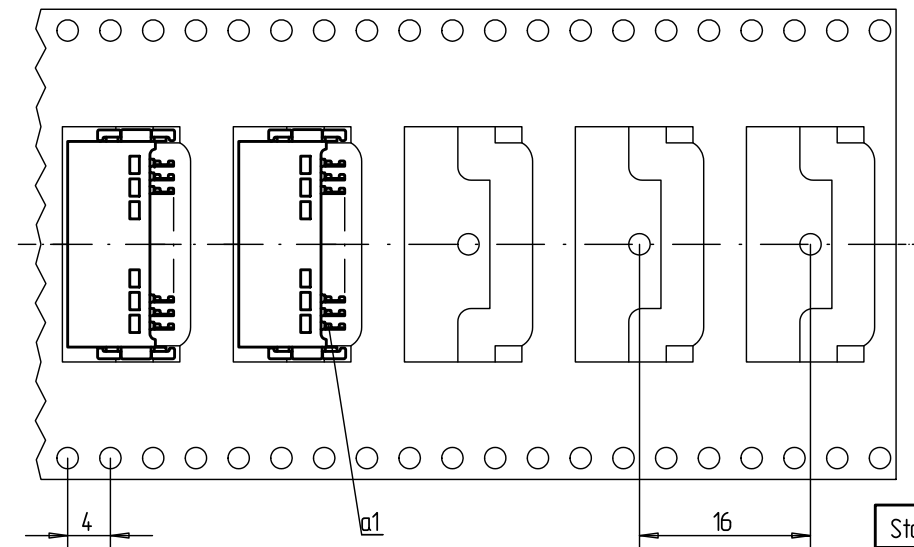


Verpackt in Gurtverpackung - *Tape on Reel Packaging*
Verpackungseinheit: 560 Stück - *Packaging unit: 560 pcs*



Abspulrichtung - *Reel off Direction*



Standard Bauhöhe

Standard Assembly Height

Anforderungsstufe 1
Performance Level 1

Kontaktbereich vergoldet
Mating Area gold plating

Anschlussbereich verzinnt 4-6 μm
Terminal Area 4-6 μm tin plating

Koplanaritaet der Anschluesse $\leq 0.1\text{mm}$
Coplanarity Area of Termination $\leq 0.1\text{ mm}$

Consider protection memo from DIN 34

Information:

Tolerances



All Dimensions
in mm

Scale 3:1

3:1

All rights reserved.
Only for information.
To insure that this is the latest
version of this drawing, please
contact one of the ERNI companies
before using.

Subject to modification without
prior notice.
Drawing will not be updated.

+	Designation
---	-------------

Messerleiste SMC-B, 26 polig
Male Conn. SMC-B, 26 contacts

ERNI www.ERNI.com

054595

1

9

Index

01.03.2010

Date _____

M:00069192.SZA

SMCB

Mouser Electronics

Authorized Distributor

Click to View Pricing, Inventory, Delivery & Lifecycle Information:

[ERNI Electronics:](#)

[054595](#)