

LOC	DIST	REVISIONS					
AD	00	P	LTR	DESCRIPTION	DATE	DWN	APVD
			B3	REVISED PER ECO-11-005027	12MAR2011	RK	HMR

D

C

B

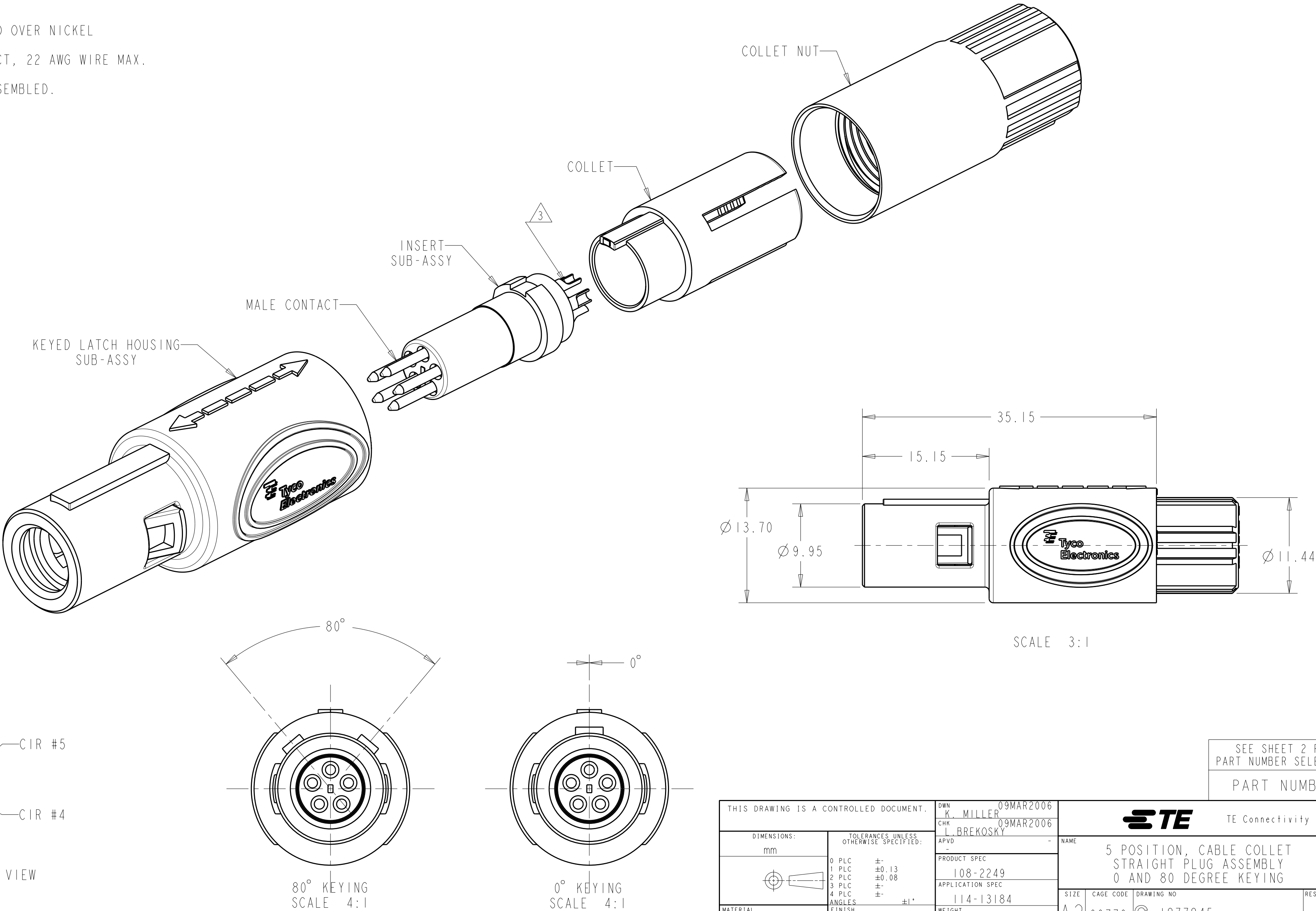
A

1 MATERIAL:
CONTACT: BRASS
LATCH HOUSING, INSERT, COLLET, COLLET NUT:
UL 94V-0 RATED THERMOPLASTIC
COLOR:
COLLET AND INSERT: GRAY
LATCH HOUSING AND NUT: SEE TABLE

2 FINISH:
CONTACT, 0.75µm MIN. GOLD OVER NICKEL


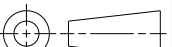

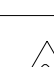
3 SOLDER TERMINATION CONTACT, 22 AWG WIRE MAX.

4. PRODUCT IS SUPPLIED UNASSEMBLED.



SEE SHEET 2 FOR
PART NUMBER SELECTION

PART NUMBER

THIS DRAWING IS A CONTROLLED DOCUMENT.		DWN K. MILLER 09MAR2006 CHK L. BREKOSKY 09MAR2006		 TE Connectivity		
DIMENSIONS: mm		TOLERANCES UNLESS OTHERWISE SPECIFIED: 0 PLC ± 1 PLC ±0.13 2 PLC ±0.08 3 PLC ± 4 PLC ± ANGLES ±1° FINISH		NAME 5 POSITION, CABLE COLLET STRAIGHT PLUG ASSEMBLY 0 AND 80 DEGREE KEYING		
		PRODUCT SPEC 108-2249 APPLICATION SPEC 114-13184		SIZE A2		CAGE CODE 00779
MATERIAL 		WEIGHT -		DRAWING NO C-1877845		RESTRICTED TO -
		CUSTOMER DRAWING		SCALE 4:1		SHEET 1
						OF 3
						REV B3

4

3

2

1

THIS DRAWING IS UNPUBLISHED.

RELEASED FOR PUBLICATION

20

© COPYRIGHT 20

BY -

ALL RIGHTS RESERVED.

LOC

DIST

AD

00

REVISIONS

P	LTR	DESCRIPTION	DATE	DWN	APVD
	-	SEE SHEET 1	-	-	-

Ø 2.7-Ø 3.9

BLUE

GRAY

80°

7-1877845-2

Ø 4.0-Ø 5.2

BLUE

GRAY

80°

7-1877845-1

Ø 5.3-Ø 6.5

BLUE

GRAY

80°

7-1877845-0

Ø 2.7-Ø 3.9

BLUE

GRAY

0°

6-1877845-9

Ø 4.0-Ø 5.2

BLUE

GRAY

0°

6-1877845-8

Ø 5.3-Ø 6.5

BLUE

GRAY

0°

6-1877845-7

Ø 2.7-Ø 3.9

BLUE

BLACK

80°

6-1877845-6

Ø 4.0-Ø 5.2

BLUE

BLACK

80°

6-1877845-5

Ø 5.3-Ø 6.5

BLUE

BLACK

80°

6-1877845-4

Ø 2.7-Ø 3.9

BLUE

BLACK

0°

6-1877845-3

Ø 4.0-Ø 5.2

BLUE

BLACK

0°

6-1877845-2

Ø 5.3-Ø 6.5

BLUE

BLACK

0°

6-1877845-1

Ø 2.7-Ø 3.9

GREEN

GRAY

80°

6-1877845-0

Ø 4.0-Ø 5.2

GREEN

GRAY

80°

5-1877845-9

Ø 5.3-Ø 6.5

GREEN

GRAY

80°

5-1877845-8

Ø 2.7-Ø 3.9

GREEN

GRAY

0°

5-1877845-7

Ø 4.0-Ø 5.2

GREEN

GRAY

0°

5-1877845-6

Ø 5.3-Ø 6.5

GREEN

GRAY

0°

5-1877845-5

Ø 2.7-Ø 3.9

GREEN

BLACK

80°

5-1877845-4

Ø 4.0-Ø 5.2

GREEN

BLACK

80°

5-1877845-3

Ø 5.3-Ø 6.5

GREEN

BLACK

80°

5-1877845-2

Ø 2.7-Ø 3.9

GREEN

BLACK

0°

5-1877845-1

Ø 4.0-Ø 5.2

GREEN

BLACK

0°

5-1877845-0

Ø 5.3-Ø 6.5

GREEN

BLACK

0°

4-1877845-9

Ø 2.7-Ø 3.9

YELLOW

GRAY

80°

4-1877845-8

Ø 4.0-Ø 5.2

YELLOW

GRAY

80°

4-1877845-7

Ø 5.3-Ø 6.5

YELLOW

GRAY

80°

4-1877845-6

Ø 2.7-Ø 3.9

YELLOW

GRAY

0°

4-1877845-5

Ø 4.0-Ø 5.2

YELLOW

GRAY

0°

4-1877845-4

Ø 5.3-Ø 6.5

YELLOW

GRAY

0°

4-1877845-3

Ø 2.7-Ø 3.9

YELLOW

BLACK

80°

4-1877845-2

Ø 4.0-Ø 5.2

YELLOW

BLACK

80°

4-1877845-1

Ø 5.3-Ø 6.5

YELLOW

BLACK

80°

4-1877845-0

Ø 2.7-Ø 3.9

YELLOW

BLACK

0°

3-1877845-9

Ø 4.0-Ø 5.2

YELLOW

BLACK

0°

3-1877845-8

Ø 5.3-Ø 6.5

YELLOW

BLACK

0°

3-1877845-7

CABLE RANGE

BACK-NUT
COLOR

LATCH HOUSING
COLOR

KEYING

PART NO.

PART NUMBERS 37 THRU 72

Ø 2.7-Ø 3.9

WHITE

GRAY

80°

3-1877845-6

Ø 4.0-Ø 5.2

WHITE

GRAY

80°

3-1877845-5

Ø 5.3-Ø 6.5

WHITE

GRAY

80°

3-1877845-4

Ø 2.7-Ø 3.9

WHITE

GRAY

0°

3-1877845-3

Ø 4.0-Ø 5.2

WHITE

GRAY

0°

3-1877845-2

Ø 5.3-Ø 6.5

WHITE

GRAY

0°

3-1877845-1

Ø 2.7-Ø 3.9

WHITE

BLACK

80°

3-1877845-0

Ø 4.0-Ø 5.2

WHITE

BLACK

80°

2-1877845-9

Ø 5.3-Ø 6.5

WHITE

BLACK

80°

2-1877845-8

Ø 2.7-Ø 3.9

WHITE

BLACK

0°

2-1877845-7

Ø 4.0-Ø 5.2

WHITE

BLACK

0°

2-1877845-6

Ø 5.3-Ø 6.5

WHITE

BLACK

0°

2-1877845-5

Ø 2.7-Ø 3.9

RED

GRAY

80°

2-1877845-4

Ø 4.0-Ø 5.2

RED

GRAY

80°

2-1877845-3

Ø 5.3-Ø 6.5

RED

GRAY

80°

2-1877845-2

Ø 2.7-Ø 3.9

RED

GRAY

0°

2-1877845-1

Ø 4.0-Ø 5.2

RED

GRAY

0°

2-1877845-0

Ø 5.3-Ø 6.5

RED

GRAY

0°

1-1877845-9

Ø 2.7-Ø 3.9

RED

BLACK

80°

1-1877845-8

Ø 4.0-Ø 5.2

RED

BLACK

80°

1-1877845-7

Ø 5.3-Ø 6.5

RED

BLACK

80°

1-1877845-6

Ø 2.7-Ø 3.9

RED

BLACK

0°

1-1877845-5

Ø 4.0-Ø 5.2

RED

BLACK

0°

1-1877845-4

Ø 5.3-Ø 6.5

RED

BLACK

0°

1-1877845-3

Ø 2.7-Ø 3.9

GRAY

GRAY

80°

1-1877845-2

Ø 4.0-Ø 5.2

GRAY

GRAY

80°

1-1877845-1

Ø 5.3-Ø 6.5

GRAY

GRAY

80°

1-1877845-0

Ø 2.7-Ø 3.9

GRAY

GRAY

0°

1877845-9

Ø 4.0-Ø 5.2

GRAY

GRAY

0°

1877845-8

Ø 5.3-Ø 6.5

GRAY

GRAY

0°

1877845-7

Ø 2.7-Ø 3.9

BLACK

BLACK

80°

1877845-6

Ø 4.0-Ø 5.2

BLACK

BLACK

80°

1877845-5

Ø 5.3-Ø 6.5

BLACK

BLACK

80°

1877845-4

Ø 2.7-Ø 3.9

BLACK

BLACK

0°

1877845-3

Ø 4.0-Ø 5.2

BLACK

BLACK

0°

1877845-2

Ø 5.3-Ø 6.5

BLACK

BLACK

0°

1877845-1

CABLE RANGE

BACK-NUT
COLOR

LATCH HOUSING
COLOR

KEYING

PART NO.

PART NUMBERS 1 THRU 36

THIS DRAWING IS A CONTROLLED DOCUMENT.

DIMENSIONS:

mm



MATERIAL



TOLERANCES UNLESS OTHERWISE SPECIFIED:

0 PLC ±

1 PLC ±0.13

2 PLC ±0.08

3 PLC ±

4 PLC ±

ANGLES ±1°

FINISH



DWN K. MILLER 09MAR2006

CHK L. BREKOSKY 09MAR2006

APVD -

PRODUCT SPEC 108-2249

APPLICATION SPEC 114-13184

WEIGHT -

CUSTOMER DRAWING

NAME 5 POSITION, CABLE COLLET STRAIGHT PLUG ASSEMBLY 0 AND 80 DEGREE KEYING

SIZE A2

CAGE CODE 00779

DRAWING NO. 1877845

RESTRICTED TO -

SCALE 4:1

SHEET 2 OF 3

REV B3

1471-9 (3/11)

4

3

2

1

THIS DRAWING IS UNPUBLISHED.

RELEASED FOR PUBLICATION

20

© COPYRIGHT 20

BY -

ALL RIGHTS RESERVED.

LOC

DIST

AD

00

REVISIONS

P	LTR	DESCRIPTION	DATE	DWN	APVD
	-	SEE SHEET 1	-	-	-

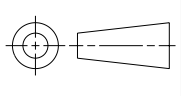
Ø 2.7-Ø 3.9	BLACK	GRAY	80°	8-1877845-4
Ø 4.0-Ø 5.2	BLACK	GRAY	80°	8-1877845-3
Ø 5.3-Ø 6.5	BLACK	GRAY	80°	8-1877845-2
Ø 2.7-Ø 3.9	BLACK	GRAY	0°	8-1877845-1
Ø 4.0-Ø 5.2	BLACK	GRAY	0°	8-1877845-0
Ø 5.3-Ø 6.5	BLACK	GRAY	0°	7-1877845-9
Ø 2.7-Ø 3.9	GRAY	BLACK	80°	7-1877845-8
Ø 4.0-Ø 5.2	GRAY	BLACK	80°	7-1877845-7
Ø 5.3-Ø 6.5	GRAY	BLACK	80°	7-1877845-6
Ø 2.7-Ø 3.9	GRAY	BLACK	0°	7-1877845-5
Ø 4.0-Ø 5.2	GRAY	BLACK	0°	7-1877845-4
Ø 5.3-Ø 6.5	GRAY	BLACK	0°	7-1877845-3
CABLE RANGE	BACK-NUT COLOR	LATCH HOUSING COLOR	KEYING	PART NO.
PART NUMBERS 73 THRU 84				

THIS DRAWING IS A CONTROLLED DOCUMENT.

DWN
K. MILLER
CHK
L. BREKOSKY
APVD
-
PRODUCT SPEC
108-2249
APPLICATION SPEC
114-13184
WEIGHT
-
CUSTOMER DRAWING

DWN
09MAR2006
CHK
09MAR2006
APVD
-
PRODUCT SPEC
108-2249
APPLICATION SPEC
114-13184
WEIGHT
-
CUSTOMER DRAWING

DIMENSIONS:
mm



MATERIAL
-

TOLERANCES UNLESS
OTHERWISE SPECIFIED:

0 PLC ±
1 PLC ±0.13
2 PLC ±0.08
3 PLC ±
4 PLC ±
ANGLES ±1°
FINISH

TE Connectivity

5 POSITION, CABLE COLLET
STRAIGHT PLUG ASSEMBLY
0 AND 80 DEGREE KEYING

SIZE
A2

CAGE CODE
00779

DRAWING NO
1877845

RESTRICTED TO
-

SCALE
4:1

SHEET
3

OF
3

REV
B3

1471-9 (3/11)

Mouser Electronics

Authorized Distributor

Click to View Pricing, Inventory, Delivery & Lifecycle Information:

[TE Connectivity:](#)

[4-1877845-8](#)