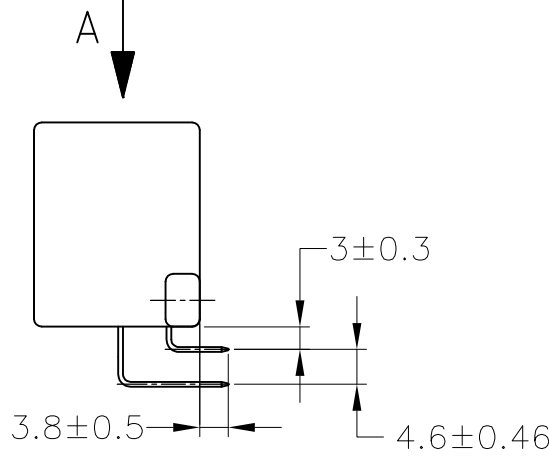
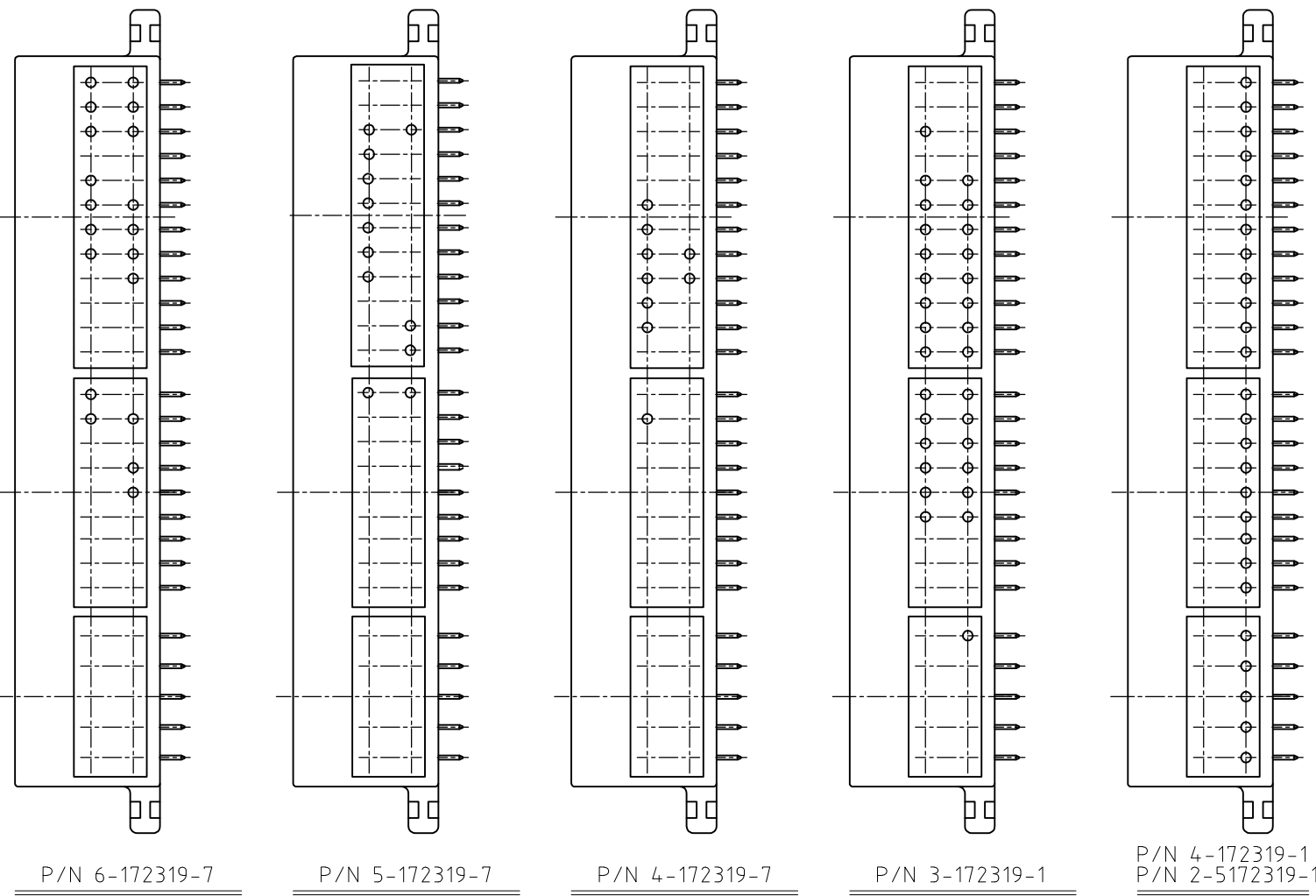
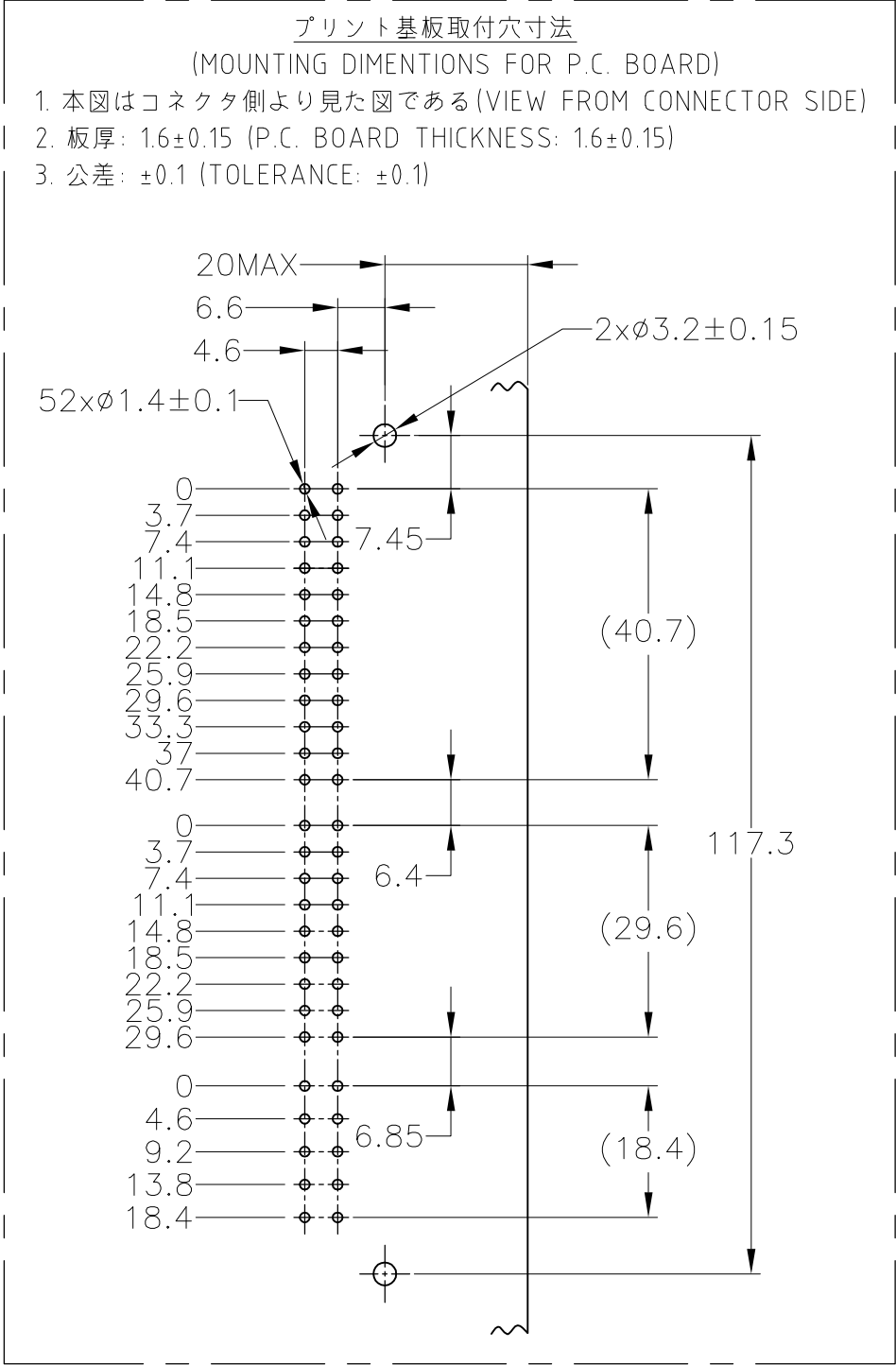
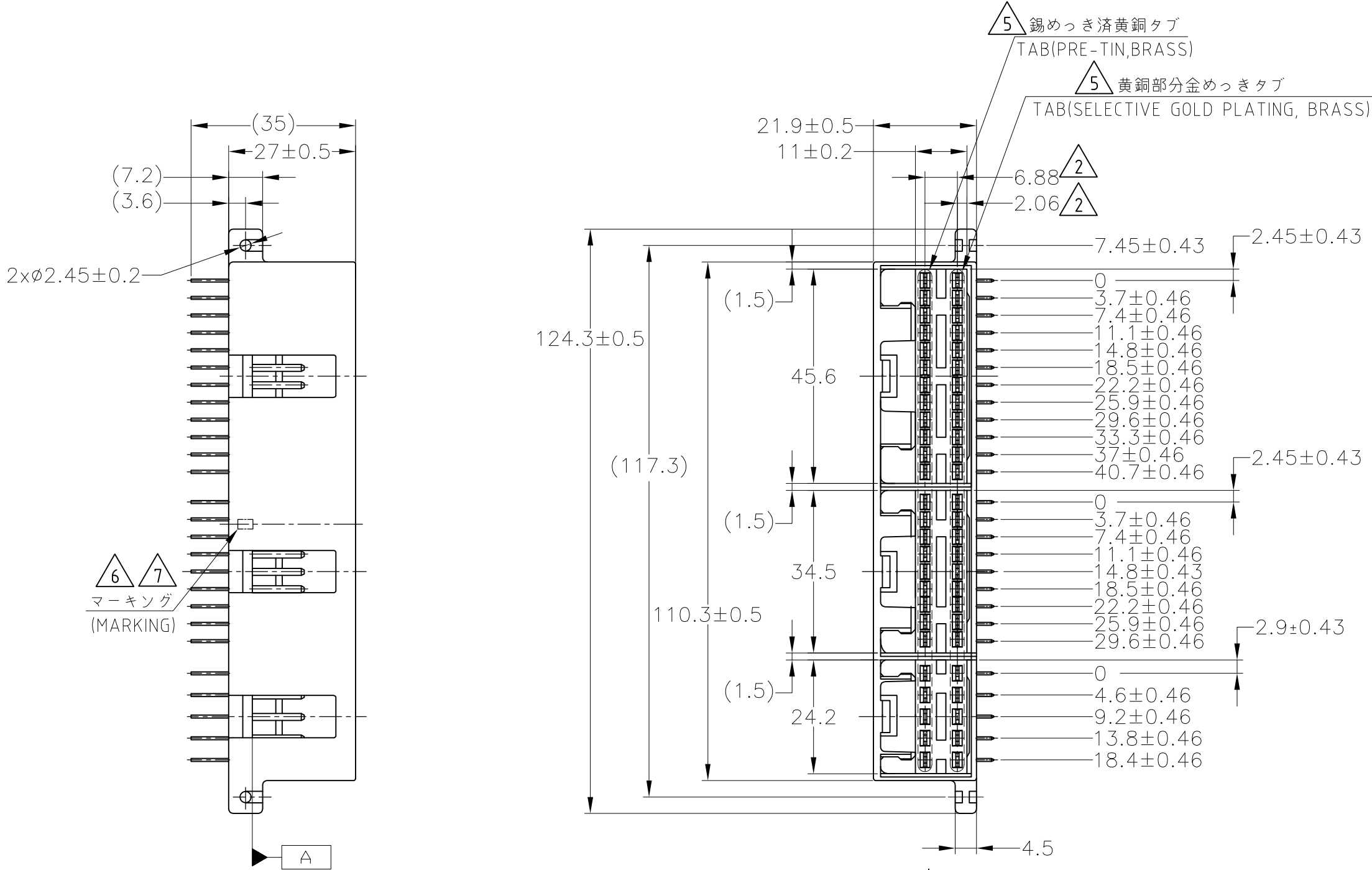


| REVISIONS | | | | | |
|-----------|-----|---------------|---------------|---------|-------|
| P | LTR | DESCRIPTION | DATE | DWN | APVD |
| | K5 | OBSOLETE 2--1 | ECR-16-003021 | 16SUG16 | KF HY |



1. THE MATING COUNTERPART
P/N;10Pos 172315. 18Pos 172316. 24Pos 172317
2. TO BE MEASURED WITHIN 2mm FROM [A]
3. SELECTIVE GOLD PLATED (CONTACT AREA) TIN LEAD PLATED (SOLDERING AREA) OVER NICKEL PLATED
4. SOLDERING AFTER MOUNTING P.CBOARD SECURE BY USING M3, PAN HEAD TAPPING SCREW
5. APPLICABLE PART NUMBERS; 2-172319-1,-7
6. INDICATED PREFIX AND SUFFIX OF PRODUCT P/N BY HOT STAMP (APPLICABLE P/N 5-172319-7)
7. CHARACTERS MUST BE CLEAR AND LEGIBLE
1. 嵌合する相手ハウジング型番; 10極 172315 18極 172316 24極 172317
2. [A] 面より2mmの範囲で測定のこと
3. 全面ニッケルメッキ上に部分メッキ(嵌合部)及び半田メッキ(半田付部)
4. プリント基板への取付けは M3のタッピンネジ(JIS B1115 1種)で締付けた後半田付けをする
5. 2-172319-1,-7のみに適用
6. 製品型番のブリフィックスをカラーホットマーキングにより表示する(適用型番5-172319-7)
7. 文字は明瞭であること

| | | | | |
|-------------------------|-----------------------|-------------------------------------|----------------|---------------------|
| OBSOLETE | SELECTIVE TIN (MATTE) | SELECTIVE GOLD x 26 PRE-TIN x 26 | YELLOW 黄色 | 2-5172319-1 |
| | SELECTIVE TIN (MATTE) | SELECTIVE GOLD x 52 | YELLOW 黄色 | 1-5172319-7 |
| | SELECTIVE TIN (MATTE) | SELECTIVE GOLD x 52 | GRAY 灰色 | 1-5172319-6 |
| | TIN-LEAD x 52 | | YELLOW 黄色 | 8-172319-7 |
| OBSOLETE | TIN-LEAD | SELECTIVE GOLD x 19 PRE-TIN x 33 | YELLOW 黄色 | 6-172319-7 |
| OBSOLETE | TIN-LEAD | SELECTIVE GOLD x 12 PRE-TIN x 40 | YELLOW 黄色 | 5-172319-7 |
| OBSOLETE | TIN-LEAD | SELECTIVE GOLD x 9 PRE-TIN x 43 | YELLOW 黄色 | 4-172319-7 |
| OBSOLETE | TIN-LEAD | SELECTIVE GOLD x 26 | NATURAL 自然色 | 4-172319-1 |
| | TIN-LEAD | SELECTIVE GOLD x 30 PRE-TIN x 22 | NATURAL 自然色 | 3-172319-1 |
| | TIN-LEAD | SELECTIVE GOLD x 26 | NATURAL 自然色 | 2-172319-7 |
| | TIN-LEAD | SELECTIVE GOLD x 26 PRE-TIN x 26 | YELLOW 黄色 | 2-172319-1 |
| OBSOLETE | TIN-LEAD | 3 SELECTIVE GOLD x 52 | YELLOW 黄色 | 1-172319-7 |
| | TIN-LEAD | 3 SELECTIVE GOLD x 52 | GRAY 灰色 | 1-172319-6 |
| PRE-TIN x 52 | | | YELLOW | 172319-7 |
| PRE-TIN x 52 | | | NATURAL 自然色 | 172319-1 |
| SOLDERING SIDE 半田付け面 | | CONTACT SIDE 接触部側 | COLOR 色 | PART NUMBER 製品型番 |

A方向から見た金めっき配置図
(LAYOUT OF GOLD PLATING CONTACT VIEW FROM "A" DIRECTION)

⊕ GOLD PLATING CONTACT
(金めっき品)

| TOLERANCES UNLESS OTHERWISE SPECIFIED: 一般公差 | |
|--|--------|
| 10± | ± 0.2 |
| 30± | ± 0.25 |
| 100± | ± 0.3 |
| ANGLE | 3° |

| | | | |
|--|--|----------------------------|---------|
| THIS DRAWING IS A CONTROLLED DOCUMENT. | | DWN S.FUJITA | 04AUG08 |
| | | CHK T.SHINOHARA | 04AUG08 |
| | | APVD K.BETSUI | 04AUG08 |
| DIMENSIONS: 単位: 純 mm | | PRODUCT SPEC 製品規格 | |
| | | APPLICATION SPEC 取付適用規格 | |
| MATERIAL 材料 | | WEIGHT | 41.5 g |
| | | CUSTOMER DRAWING | |

| | | | |
|---|-----------|------------------|---------------|
| TE Connectivity | | | |
| 52POSITION CAP HOUSING ASSY PULSE LOCK CONNECTOR | | | |
| SIZE | CAGE CODE | DRAWING NO 番号 | RESTRICTED TO |
| A2 | 00779 | C=172319 | — |
| SCALE 尺度 1:1 | | SHEET 1 of 1 | REV K5 |

Mouser Electronics

Authorized Distributor

Click to View Pricing, Inventory, Delivery & Lifecycle Information:

[TE Connectivity:](#)

[1-172319-7](#)