



Important notes about Classic Panel Mount Indicator Catalog Pages

SCROLL DOWN TO VIEW CATALOG PAGE

This catalog page is out-of-print and is used with the understanding that the information shown could be out-of-date. In many cases, part numbers shown on this page are discontinued. Most notably, many "Complete Assembly" parts, which consist of a cap and a base, can no longer be ordered by the 14-digit ordering code. To obtain these parts, please order the cap and base part numbers separately. This process provides the components contained with the original "Complete Assembly" part number.

All Dialight Classic Panel Mount Indicators need a leading 3-digit numerical series. In some cases, this catalog will show a 2-digit series. In this case, please add a leading zero. For example, 81-0211-300 becomes 081-0211-300.

Part numbers listed on Dialight catalog pages designate parts with Red lenses. For ordering lens colors other than red, consult the chart below. In most cases, the color is dictated by the 7th digit. For example, 095-0932-003 for a green cap.

Lens Colors	
1 - Red	5 - White
2 - Green	6 - Light Yellow
3 - Yellow	7 - Clear
4 - Blue	

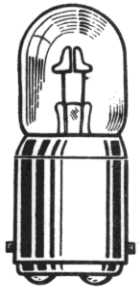
[Click here for a cross reference guide to assembly part numbers.](#)

[Click here to view Frequently Asked Questions concerning Panel Mount Indicators.](#)

SCROLL DOWN TO VIEW CATALOG PAGE

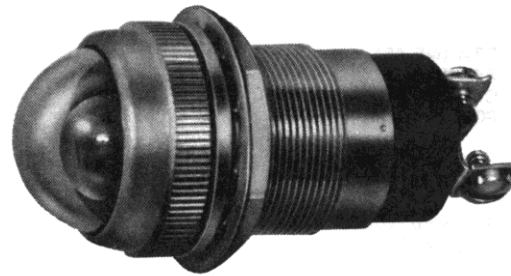
OIL TIGHT Large Neon Indicators

FOR MOUNTING IN 1" CLEARANCE HOLE



T-4 1/2
B9A (NE-48)
DOUBLE CONTACT
BAYONET BASE

See lamp ratings
on page M.



103-5406-1231-433
Dome lens

Recognized under the component
program of Underwriters'
Laboratories Inc.



MATERIALS AND FINISHES

- **Mounting Bushing:** Brass, white nickel finish.
Optional, black nickel finish.
- **Lens Holder:** Brass, satin chrome finish, Optional,
polished chrome or black nickel finish.
- **Internal Tooth Lockwasher:** Steel, cadmium plated, iridite finish.
- **Mounting Nut:** Brass, white nickel finish.

How to designate the three digit part number suffix (-XXX)

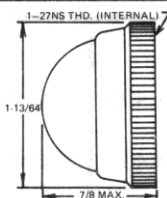
FINISH	RESISTOR	HARDWARE
1-WHITE NICKEL	3-16.4K	3-WATER-TIGHT, OIL TIGHT ON THE FACE OF THE PANEL
2-BLACK NICKEL	4-30 K	
3-POLISHED CHROME		
4-SATIN CHROME		

Note: The part numbers given in this catalog indicate standard indicator lights.
The above table provides the standard and optional designations for Finish and
Resistor where appropriate.

103 SERIES

BASE PART NUMBERS

CAP PART NUMBERS

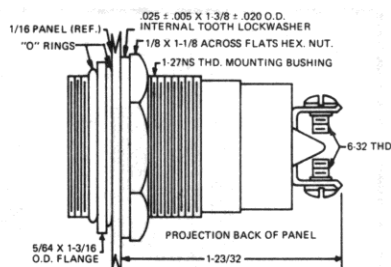


DOME

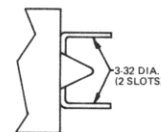
103-1231-403
not matted

103-0841-403
back matted

movable screw terminals



movable soldering terminals



103-5406-05-133

103-5306-05-133

COMPLETE ASSEMBLY PART NUMBERS

103-5406-1231-433

103-5306-1231-433

103-5406-0841-433

103-5306-0841-433

Part numbers shown in gray are normally
in inventory at your Dialight Distributor.

Part numbers listed in this catalog designate products with RED lens.
For ordering lens colors other than red, consult chart on page 1E.

Order complete with lamp to be assured of receiving the
indicator light and correct lamp together for immediate use.

Mouser Electronics

Authorized Distributor

Click to View Pricing, Inventory, Delivery & Lifecycle Information:

Dialight:

[103-5406-05-253](#)