

# WINTOTAL SOFTWARE

## Label/Marker Design Package

### Technical Datasheet

TTDS-001 Revision 13 - Dec 2016

WinTotal is a label/marker design package that makes wire marker printing simple in an industrial environment. Running in the familiar Windows environment,

WinTotal v6 has 2,500 standard TE Connectivity (TE) Identification products pre-installed. This makes the creation and printing of Identification sleeves or labels a quick and simple task. Using the advanced editor, it is also possible to create complex layouts that relate to active data fields, giving a true WYSIWYG representation.

WinTotal v6 now fully supports Unicode. This allows for multilingual text to be printed using any or all of the languages required. If a character has a Unicode equivalent, then WinTotal v6 will display and print that character, if it can be written into a Microsoft application, it can be copied into WinTotal v6.

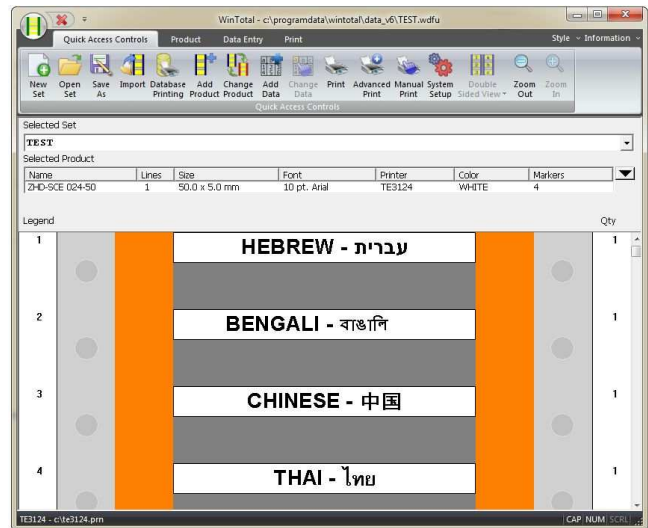
WinTotal features a highly graphical user interface to simplify operator training & minimize errors.

### Key Features

- Multi-lingual user interface
- Pre-loaded WYSIWYG templates
- Clipart gallery with commonly used symbols
- Counters - Increment/Decrement alpha and numeric fields
- Accepts and prints data in any language – Unicode data support
- Multiple Label Design Objects: Text, lines, boxes, circles and images
- Double sided marker printing with WYSIWYG display
- Live database view in fields
- Extensive Barcode and 2D barcode support, including DOD UID
- All standard image files and elements supported (PNG, JPG, BMP)
- True print preview
- Advanced label design elements and tools: Text boxes, rich text formatting, auto/variable font size, auto/variable label length for TMS Continuous Tubing
- Multiple Printers/Printing: Full MAPP (Multiple Application Port Printing). Able to drive multiple printers

### System Requirements

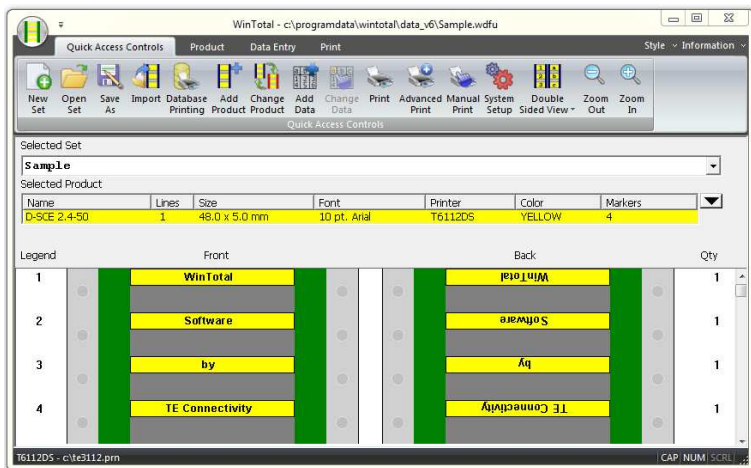
- Windows 10, 8.1, 8 or 7 (32bit or 64bit); Windows Server 2012 or 2008
- IBM compatible PC - 1GHz or higher 32bit (x86) or 64bit (x64) processor



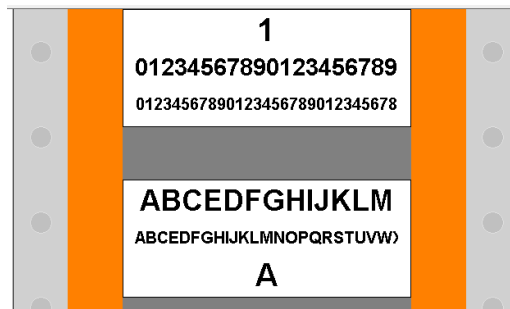
### Supported Languages

- Dutch
- English
- French
- German
- Italian
- Japanese
- Korean
- Norwegian
- Portuguese (Brazil)
- Russian
- Simplified Chinese
- Spanish
- Turkish

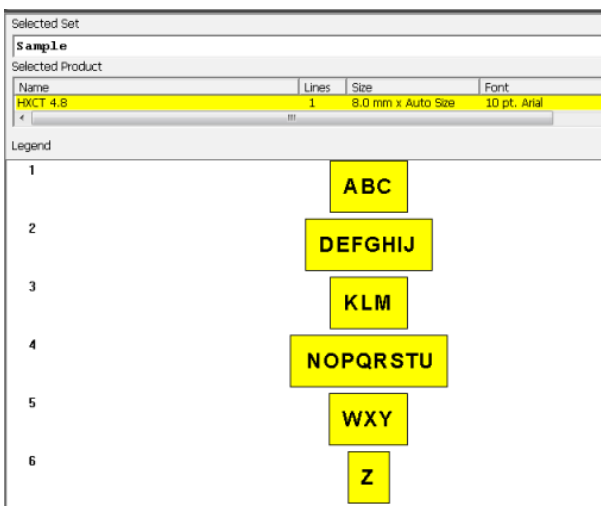




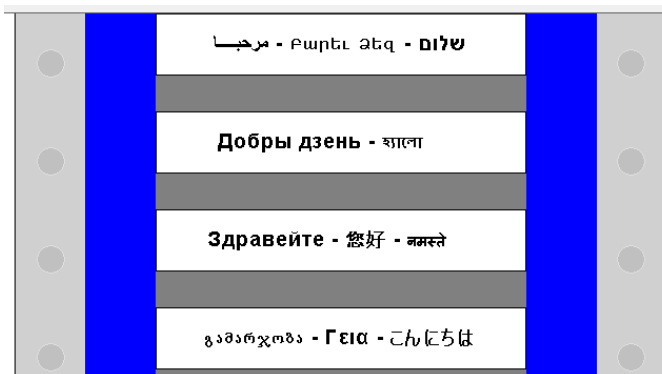
Double sided marker printing with WYSIWYG display.



Auto font sizing; string resizes to maximise contents.



Auto length sizing; print length resizes to maximise contents and minimise waste. (Continuous tubing products only)



Full Unicode support; enter and print any Unicode character.

**Ordering Information**

Ordering Description			
WINTOTAL-6-DONGLE	EC9816-000		
WINTOTAL-6-END-USER-LICENCE	EC9817-000		

Dot matrix and impact printing is NOT supported by WinTotal v6. If printing on TE Dot Matrix (DM) products is required then WinTotal v5 is the recommended software, contact a TE representative for further information.





### Printer Information

Print quality and print performance can only be guaranteed when specific TE printer and ribbons are used.

The current list of printers and ribbons can be found in TE document 411-121005 'Identification Printer Product Ribbon Matrix'. This document can be found in 'Access Our Tools':

<http://www.te.com/usa-en/utilities/access-product-tools-and-resources.html>

It is the intent of TE to support WinTotal for the complete lifecycle of the version. The lifecycle begins when the product is released and ends when support for the host Operating System (as defined in the System Requirements) is ended by Microsoft. Up to this date TE will provide software updates to fix faults and update functionality. Beyond the end of support date TE will continue to provide verbal and e-mail advice to users but TE will no longer provide fixes or updates and the software registration site will be locked for requests beyond the allocated registration allowance.

WINTOTAL software is available to download for a 14 day evaluation period from the Identification Printer Software page:

<http://www.te.com/wintotal> or direct download: <http://www.te.com/wintotal-download>

Contact a TE representative for further information.



### [www.te.com/rail](http://www.te.com/rail)

TE Connectivity, TE Connectivity (logo) and Every Connection Counts are trademarks. All other logos, products and/or company names referred to herein might be trademarks of their respective owners.

The information given herein, including drawings, illustrations and schematics which are intended for illustration purposes only, is believed to be reliable. However, TE Connectivity makes no warranties as to its accuracy or completeness and disclaims any liability in connection with its use. TE Connectivity's obligations shall only be as set forth in TE Connectivity's Standard Terms and Conditions of Sale for this product and in no case will TE Connectivity be liable for any incidental, indirect or consequential damages arising out of the sale, resale, use or misuse of the product. Users of TE Connectivity products should make their own evaluation to determine the suitability of each such product for the specific application.

© 2016 TE Connectivity Ltd. family of companies All Rights Reserved.

# Mouser Electronics

Authorized Distributor

Click to View Pricing, Inventory, Delivery & Lifecycle Information:

[TE Connectivity:](#)

[EC9816-000](#)