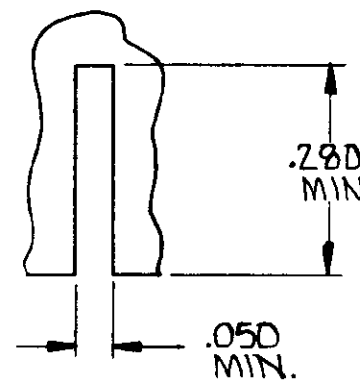
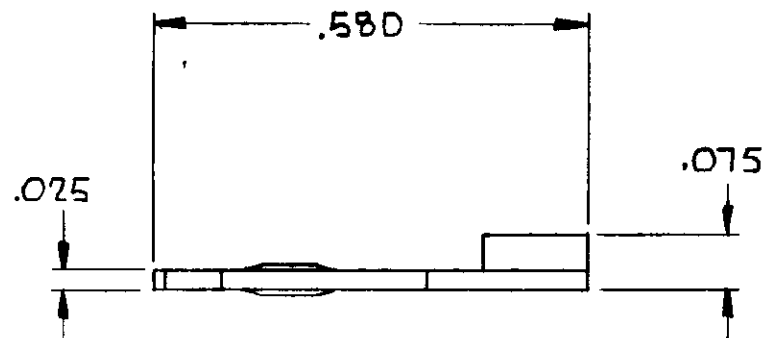
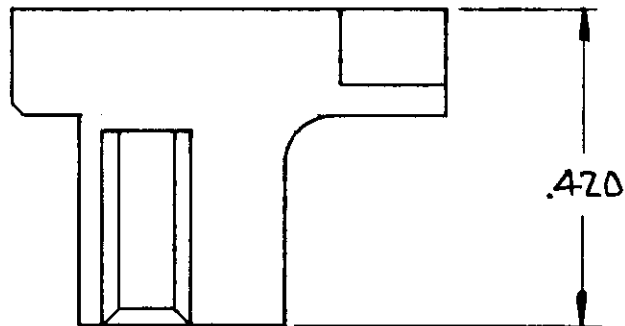


© 1970 BY AMP INCORPORATED. ALL RIGHTS RESERVED. AMP PRODUCTS COVERED BY PATENTS AND/OR PATENTS PENDING.

583661-1 I. AS SHOWN

REVISIONS				
ZONE	LTR	DESCRIPTION	DATE	APPROVED
	0	RELEASED, WAS CP 5125-68	10-13-70	NH.



SUGGESTED CUTOUT IN P.C. BOARD FOR KEYING PLUG

UNLESS OTHERWISE SPECIFIED DIMENSIONS ARE IN INCHES TOLERANCES ON: DECIMALS ± .005 ANGLES ± #	CONTRACT NO.	AMP AMP INCORPORATED HARRISBURG, PENNSYLVANIA		
	DR. <i>W. H. White</i> 10-13-70			
	MATERIAL GLASS FILLED NYLON COLOR - BLACK	CHK. <i>J. S. White</i> 10-13-70	NAME KEYING PLUG, DUO TYNE FLAG HOUSING	
	APPD. <i>J. Kimpfner</i> 10-14-70	REC. <i>R. Shuman</i> 10-14-70	SIZE B	CODE IDENT NO. 00779
OTHER APPD.	DSGN APPD.	SCALE	SHEET	

LOC AD
PRINT DIST 0/4

Mouser Electronics

Authorized Distributor

Click to View Pricing, Inventory, Delivery & Lifecycle Information:

[TE Connectivity:](#)

[583661-1](#)