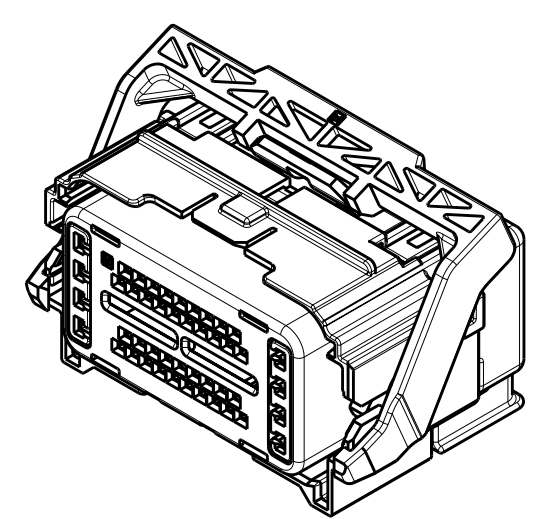
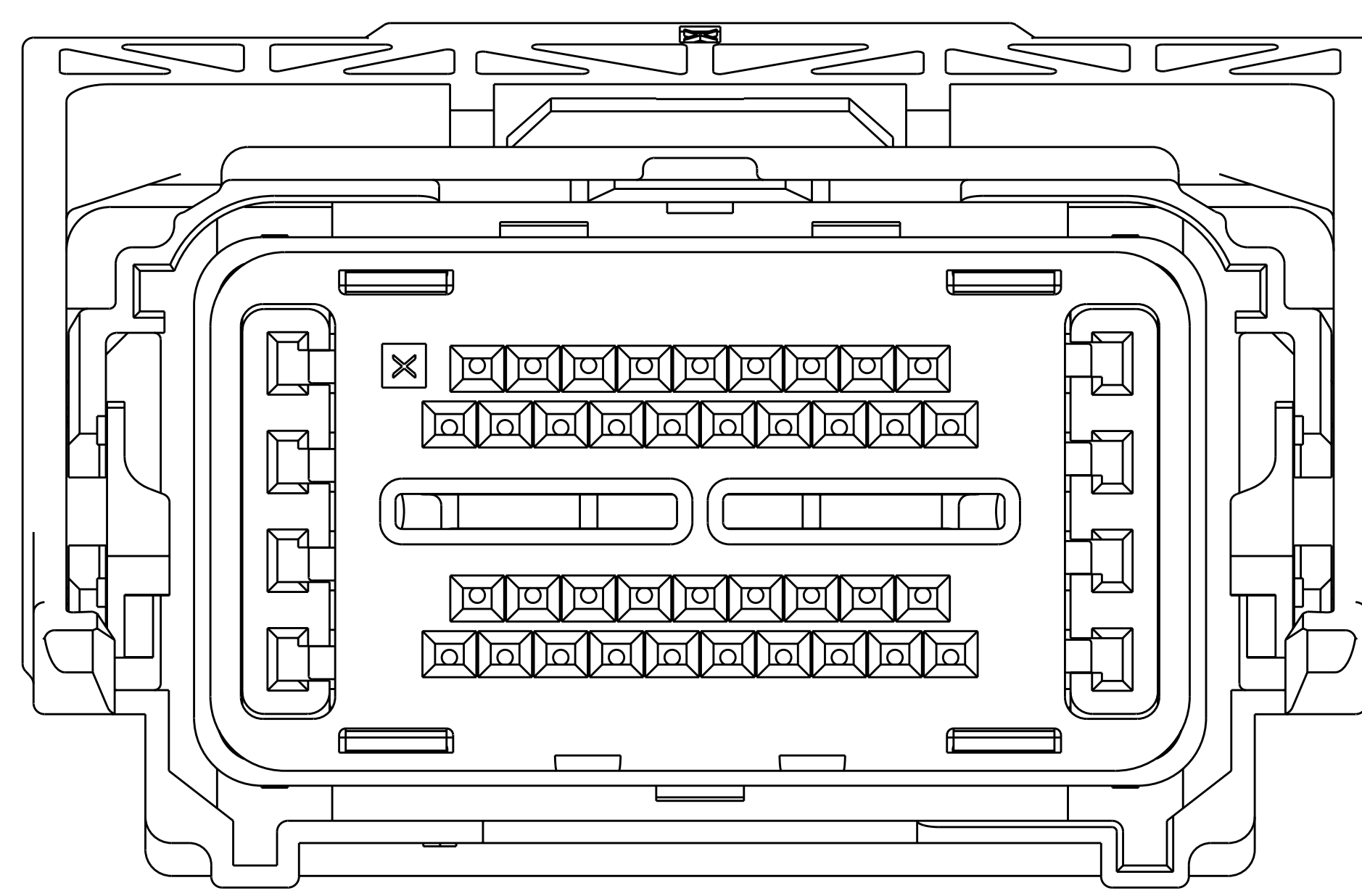
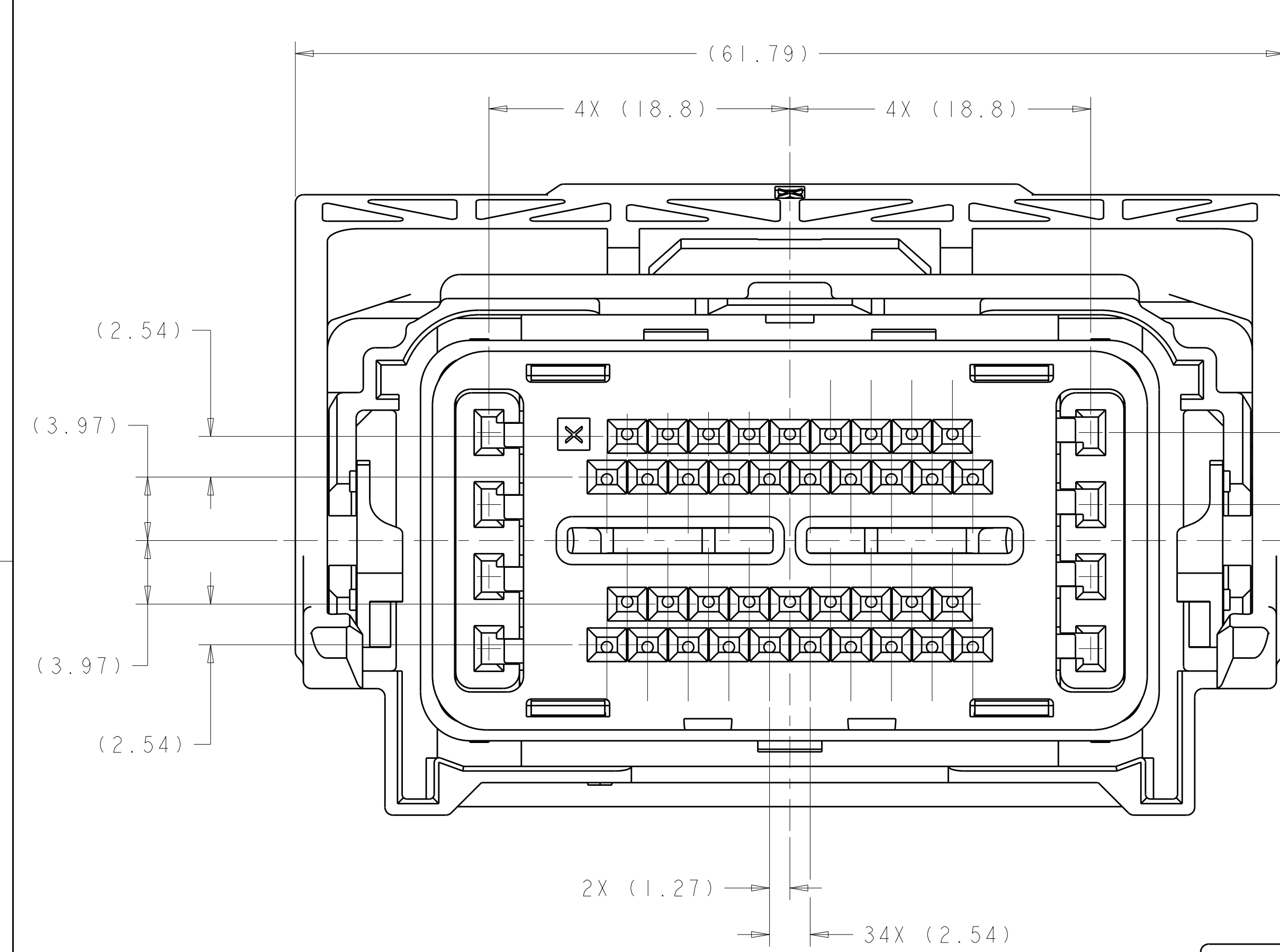
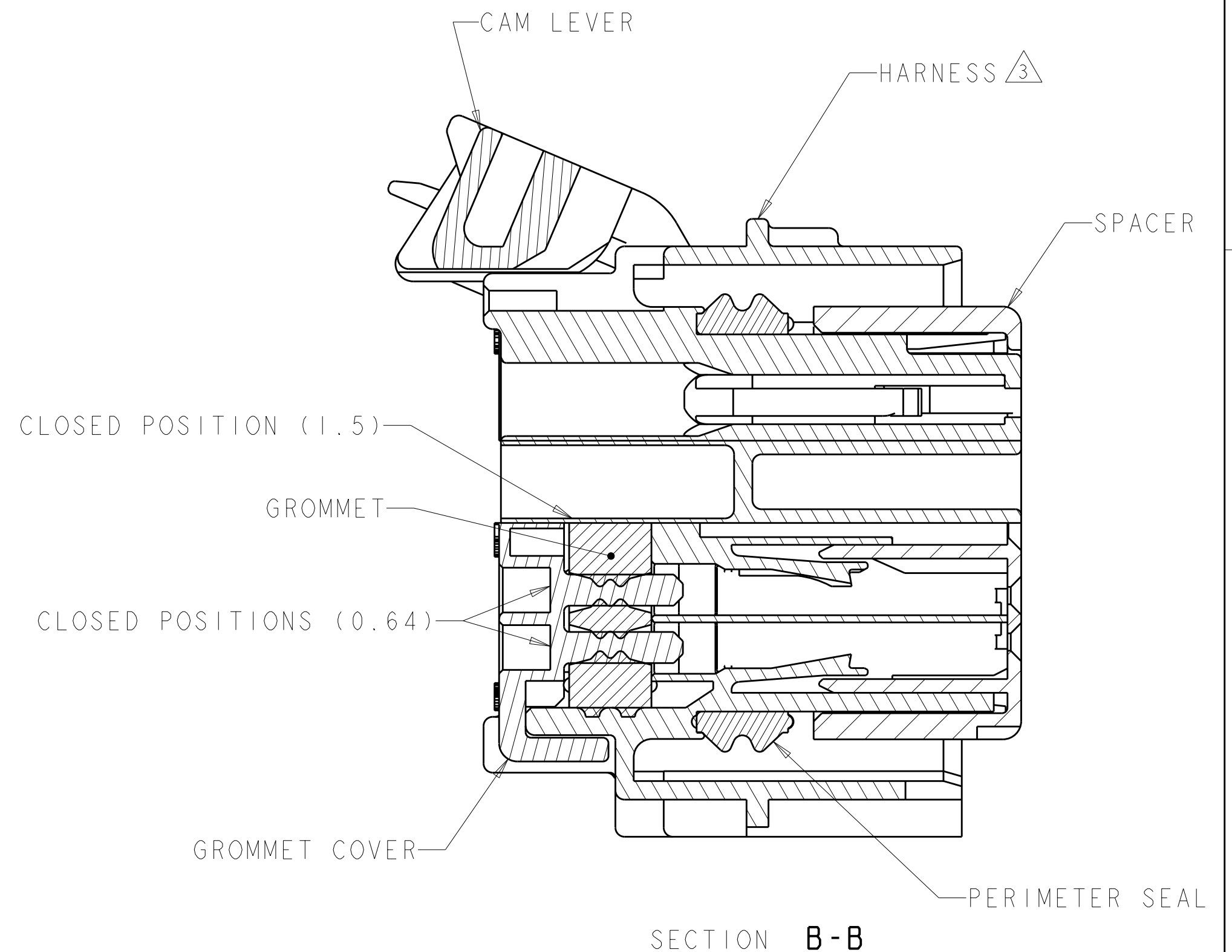
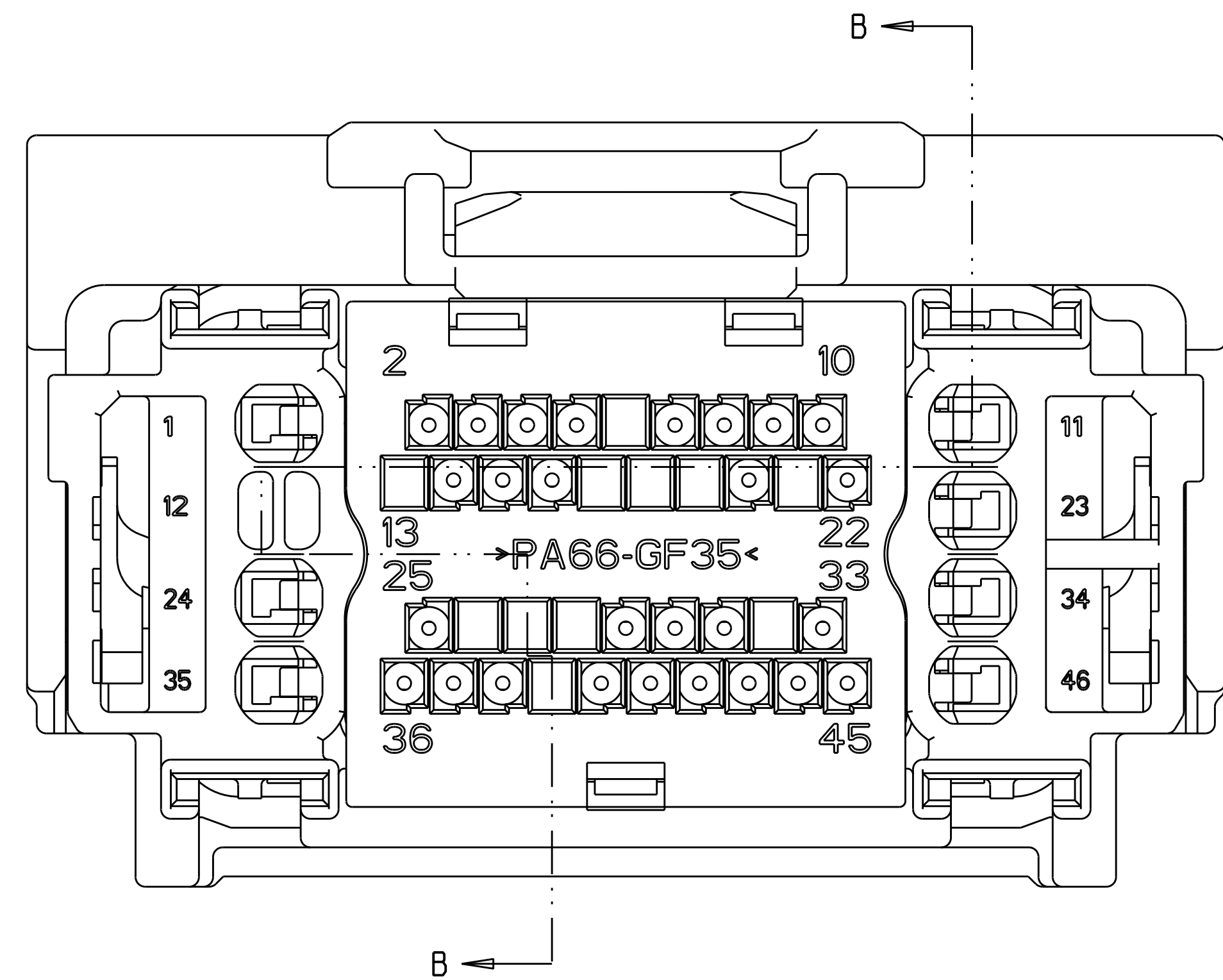
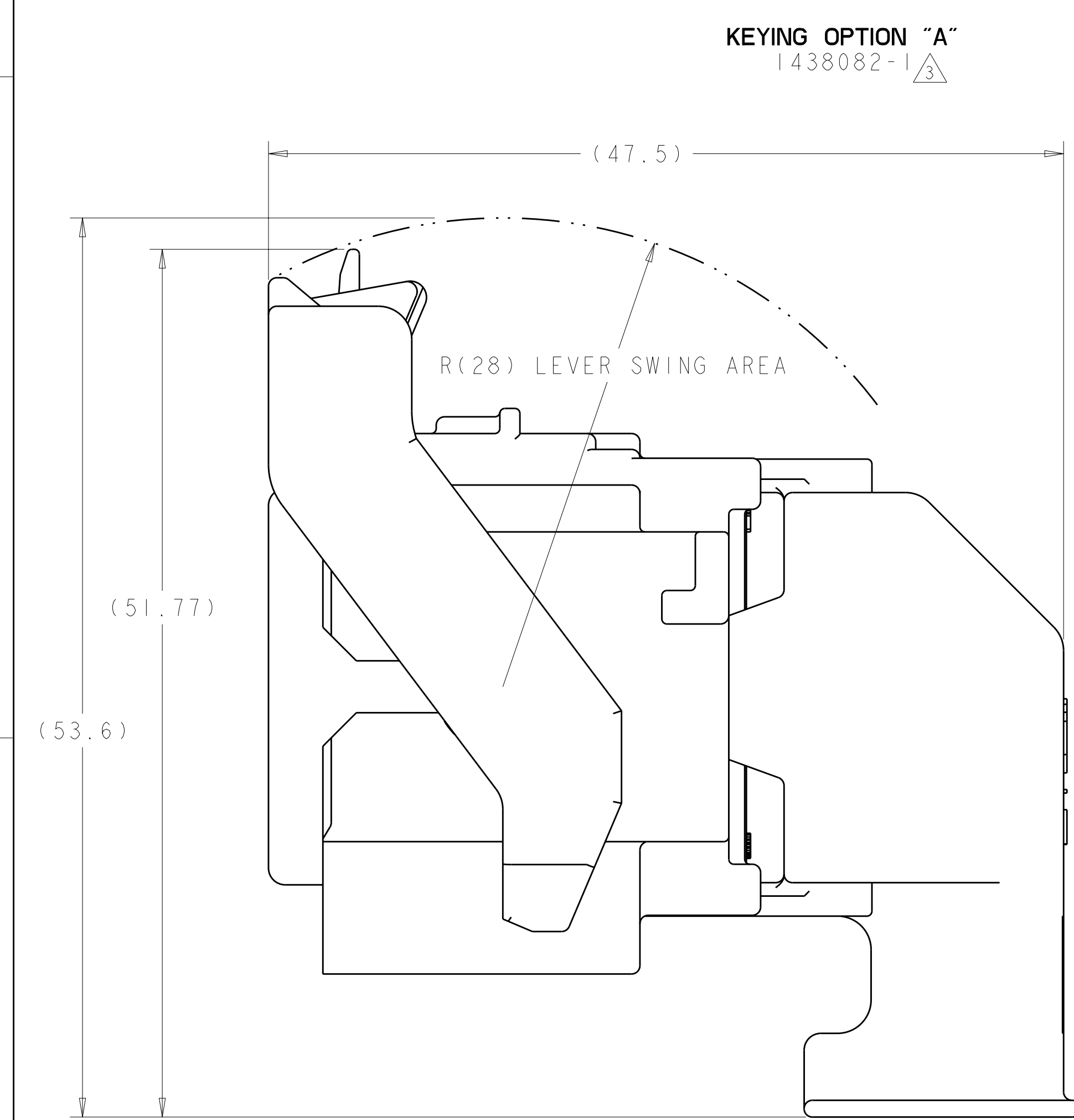


LOC		DIST		REVISIONS					
FX		00		P	LYR	DESCRIPTION	DATE	OWN	APVD
					S10	REVISED PER ECO-09-009758	23APR2009	DLD	DCM
					S11	REVISED PER ECO-09-028550	29DEC2009	DLD	DCM



SCALE 1:1



- △ MATERIAL:
- HARNESS - 35% GLASS FILLED PA66, BLACK
  - ALT MAT'L: HARNESS - 30% GLASS FILLED sPS, BLACK
  - SPACER - 40% GLASS FILLED PPS+PA66, RED
  - ALT MAT'L: 30% GLASS FILLED sPS, RED
  - ALT MAT'L: 35% GLASS FILLED PA66, RED
  - COVER - 35% GLASS FILLED PA66, BLACK
  - ALT MAT'L: COVER - 30% GLASS FILLED LCP, BLACK
  - CAM LEVER - 35% GLASS FILLED NYLON, GRAY
  - GROMMET - SILICONE, BROWN
  - PERIMETER SEAL - SILICONE, GREEN

2. CAM LEVER AND SPACER ARE SHIPPED IN PRE-LATCH POSITION.
- △ SEE PINOUT CHART ON SHEETS 2, 3 AND 4 FOR CLOSED CIRCUIT CONFIGURATIONS.
- △ CAVITIES WITH A NUMERIC SYMBOL INDICATES CLOSED TERMINAL LOCATIONS. BLANK CAVITIES INDICATE OPEN TERMINAL HOLE LOCATIONS.

SHOWN WITH CAM LEVER AND SPACER  
IN LOADED POSITION WITH  
OPTIONAL WIRESHIELD

SEE PINOUT CHARTS		PART NUMBER	
R. VESTAL 01AUG2003		Tyco Electronics Harrisburg, PA 17105-3608	
D. STRAUSSER 01AUG2003		NAME 46 WAY PCM CONNECTOR HARNESS ASSEMBLY	
D. STRAUSSER 01AUG2003		SIZE 00779	
PRODUCT SPEC		DRAWING NO C=1438082	
APPLICATION SPEC		RESTRICTED TO	
WEIGHT		SCALE 4:1	
CUSTOMER DRAWING		SHEET 1 OF 5	



LOC	DIST	REVISIONS					
FX	00	P	LTR	DESCRIPTION	DATE	DWN	APVD
		-		SEE SHEET 1	-	-	-

		44								35		32							22								12		9	7	6				1	6-1438735-7	2LIT-14A464-SD-086															
		44								35		32															12		9	7	6				1	6-1438735-3	2LIT-14A464-SD-085															
										35																											6-1438735-2	2LIT-14A464-SD-084														
			43	42		40	39		37					29					20		18			15	14			11	10	9	8	7			4	3	1	6-1438735-1	2LIT-14A464-SD-083													
45		43							38		36			31				25	24						18	17	16		14	12				7	6		2	1	5-1438735-0	2LIT-14A464-SD-082												
45		43							38		36			31				25	24								16		14	12				7	6		2	1	4-1438735-9	2LIT-14A464-SD-081												
45		43							38		36		32	31				25	24		21		19	18	17	16		14	12				7	6			1	4-1438735-8	2LIT-14A464-SD-080													
45		43						39	38	37	36			31				25	24						18	17	16		14	13	12			9	7	6		2	1	4-1438735-7	2LIT-14A464-SD-079											
				42																	20		18				13		11	10							2	1	3-1438735-8	2LIT-14A464-SD-078												
				42																	20		18				13		11	10								1	3-1438735-7	2LIT-14A464-SD-077												
45		43						39	38	37	36			31				25	24		21	20	19	18	17			14	13	12			9				2	1	3-1438735-6	2LIT-14A464-SD-076												
45		43							38		36			31				25	24		21	20	19	18	17			14	12								2	1	3-1438735-5	2LIT-14A464-SD-075												
			43	42		40	39		37					29							20		18			15	14			11	10	9	8	7			4	3	2	1	3-1438735-3	2LIT-14A464-SD-074										
45		43						39	38	37	36			31				25	24			20	19	18	17			14	13	12			9				2	1	3-1438735-2	2LIT-14A464-SD-073												
45		43							38		36			31				25	24		21	20	19	18	17	16		14	12				7				2	1	3-1438735-1	2LIT-14A464-SD-072												
45		43						39	38	37	36			31				25	24		21	20	19	18	17	16		14	13	12			9	7			2	1	3-1438735-0	2LIT-14A464-SD-071												
45		43							38		36			31				25	24		21	20	19			16		14	12				7				2	1	2-1438735-9	2LIT-14A464-SD-070												
45		43						39	38	37	36			31				25	24		21	20	19			16		14	13	12			9	7			2	1	2-1438735-8	2LIT-14A464-SD-069												
45		43							38		36			31				25	24			20	19	18	17			14	12								2	1	2-1438735-6	2LIT-14A464-SD-068												
												33															13												6	5			2-1438735-5	2LIT-14A464-SD-067								
45	44	43	42		40			38	37	36		33	31					24	22	21	20		18	17	16	15					9	8					2		2-1438735-4	2LIT-14A464-SD-066												
		43											31	29									18								8						2		2-1438735-1	2LIT-14A464-SD-065												
45		43							38		36	35		31				25	24		21					16		14	12				7	6			2	1	2-1438735-0	2LIT-14A464-SD-064												
45		43						39	38	37	36	35		31				25	24						18	17	16		14	13	12			9	7	6			2	1	1-1438735-9	2LIT-14A464-SD-063										
45		43							38		36	35		32	31				25	24		21		19	18	17	16		14	12				7	6				1	1-1438735-8	2LIT-14A464-SD-062											
45		43							38		36	35		31				25	24							16		14	12				7	6			2	1	1-1438735-7	2LIT-14A464-SD-061												
45		43							38		36	35		31				25	24		21		19			16		14	12				7	6			2	1	1-1438735-6	2LIT-14A464-SD-060												
45		43							38		36	35		31				25	24						18	17	16		14	12				7	6			2	1	1-1438735-5	2LIT-14A464-SD-059											
45		43						39	38	37	36	35		31				25	24		21		19	18	17	16		14	13	12			9	7	6			2	1	1-1438735-4	2LIT-14A464-SD-058											
45		43							38		36	35		31				25	24		21		19	18	17	16		14	12				7	6			2	1	1-1438735-3	2LIT-14A464-SD-057												
				42						37											20		18				15	14		11	10	9	8	7			4	3	2	1	1-1438735-2	2LIT-14A464-SD-056										
45		43									36	35		31				24			21		19			16		14	12				7	6				1	1-1438735-1	2LIT-14A464-SD-055												
										35							27																					3			1-1438735-0	2LIT-14A464-SD-054										
			43										31	29												18						9	8					2			1438735-9	2LIT-14A464-SD-053										
										35							27																7									1438735-8	2LIT-14A464-SD-052									
46	45	44	43	42	41	40	39	38	37	36	35	34	33	32	31	30	29	28	27	26	25	24	23	22	21	20	19	18	17	16	15	14	13	12	11	10	9	8	7	6	5	4	3	2	1		PART NUMBER	FORD PART NUMBER				
TERMINAL HOLE POSITION																																																				
PIN-OUT CHART KEYING OPTION "A"																																																				

THIS DRAWING IS UNPUBLISHED. IT IS SUBJECT TO CHANGE WITHOUT NOTICE FOR TYCO ELECTRONICS CORPORATION. IT IS THE RESPONSIBILITY OF THE USER TO OBTAIN THE LATEST REVISION. CHECK WITH THE TYCO ELECTRONICS CORPORATION FOR THE LATEST REVISION.

DIMENSIONS:

mm

MATERIAL

-

TOLERANCES UNLESS OTHERWISE SPECIFIED:

9 PLC ±.3

1 PLC ±0.10

5 PLC ±

4 PLC ±

ANGLES ±°

FINISH -

DWN R. VESTAL 01AUG2003

CHK D. STRAUSSER 01AUG2003

APVD D. STRAUSSER 01AUG2003

NAME

46 WAY PCM CONNECTOR HARNESS ASSEMBLY

SIZE A

CAGE CODE 00779

DRAWING NO. C=1438082

RESTRICTED TO -

CUSTOMER DRAWING

SCALE 4:1

SHEET 3 OF 5

REV S 11

Tyco Electronics  
Harrisburg, PA 17105-3608



LOC	DIST	REVISIONS					
FX	00	P	LTR	DESCRIPTION	DATE	DWN	APVD
		-		SEE SHEET I	-	-	-

45	44	43	42	41		38										27											7	5				7-1438735-7	2LIT-14A464-TD-086												
	44		42			38										27											7	5				7-1438735-6	2LIT-14A464-TD-085												
45	44	43	42	41		38																				7	5	4				7-1438735-5	2LIT-14A464-TD-084												
	44		42			38																				7	5	4				7-1438735-4	2LIT-14A464-TD-083												
	44	43	42	41		38																				7	5	4				7-1438735-3	2LIT-14A464-TD-082												
	44		42			38										27				22						7	5	4				7-1438735-2	2LIT-14A464-TD-081												
	44		42			38																				7	5	4				7-1438735-1	2LIT-14A464-TD-080												
		43	42														26										7	6		4	3		7-1438735-0	2LIT-14A464-TD-079											
																	26										7	6			3		6-1438735-9	2LIT-14A464-TD-078											
	44	43	42														26									7	6		4			6-1438735-8	2LIT-14A464-TD-077												
45	44	43	42	41		38																				7	5					6-1438735-6	2LIT-14A464-TD-076												
	44		42			38																				7	5					6-1438735-5	2LIT-14A464-TD-075												
	44	43	42	41		38																				7	5					6-1438735-4	2LIT-14A464-TD-074												
	44					38										27				22						8	6					6-1438735-0	2LIT-14A464-TD-073												
	44					38										27				22						8	7	6				5-1438735-9	2LIT-14A464-TD-072												
	44																26				22						6					5-1438735-8	2LIT-14A464-TD-071												
	44																26				22						7	6				5-1438735-7	2LIT-14A464-TD-070												
	44					38										27	26				22						6					5-1438735-6	2LIT-14A464-TD-069												
	44					38										27	26				22						7	6				5-1438735-5	2LIT-14A464-TD-068												
	44																26										7	6				5-1438735-4	2LIT-14A464-TD-067												
	44																26										6					5-1438735-3	2LIT-14A464-TD-066												
		43	42														26										7	6		4			5-1438735-2	2LIT-14A464-TD-065											
																	26										7	6					5-1438735-1	2LIT-14A464-TD-064											
	44	42				38										27					22						7	5				4-1438735-6	2LIT-14A464-TD-063												
	44	42				38																					7	5					4-1438735-5	2LIT-14A464-TD-062											
	44	42				38										27	26				22					8	6					4-1438735-4	2LIT-14A464-TD-061												
	44	42				38										27	26				22					8	7	6				4-1438735-3	2LIT-14A464-TD-060												
	44																26										8	7	6				4-1438735-2	2LIT-14A464-TD-059											
	44																26										8	6					4-1438735-1	2LIT-14A464-TD-058											
		43	42														26										8	7	6	5			4-1438735-0	2LIT-14A464-TD-057											
																	26										8	7	6				3-1438735-9	2LIT-14A464-TD-056											
46	45	44	43								34	33	32	31		27	25				20			16	14	13	12	10	9	8	7	6		1	3-1438735-4	2LIT-14A464-TD-055									
46	45		43								34	33	32	31		27	25				20			16	14	13	12	10	9	8	7	6		1	2-1438735-7	2LIT-14A464-TD-054									
46	45	44	43	42	40						35	34	33	32	31	28				24		21	19				12		9			5	4		1	2-1438735-3	2LIT-14A464-TD-053								
	45	44	43	42	40							33	32	31		28						21	19					9			5	4			2-1438735-2	2LIT-14A464-TD-052									
	44		42			38										27	26					22						7	5					1438735-7	2LIT-14A464-TD-051										
					40	39	38				35	34								24		21		18			13	12		9	8	7	5			1438735-6	2LIT-14A464-TD-050								
	44		42			38										27	26					22											5			1438735-5	2LIT-14A464-TD-049								
	44	42				38											26					22											5			1438735-4	2LIT-14A464-TD-048								
	44	42				38											26											7	5						1438735-3	2LIT-14A464-TD-047									
	44	42				38											26																5			1438735-2	2LIT-14A464-TD-046								
	44					38										29	28	26										7				3			1438735-1	2LIT-14A464-TD-045									
46	45	44	43	42	41	40	39	38	37	36	35	34	33	32	31	30	29	28	27	26	25	24	23	22	21	20	19	18	17	16	15	14	13	12	11	10	9	8	7	6	5	4	3	2	1
TERMINAL HOLE POSITION																																		PART NUMBER				FORD PART NUMBER							
PIN-OUT CHART KEYING OPTION "B"																																													

THIS DRAWING IS UNPUBLISHED. IT IS SUBJECT TO CHANGE WITHOUT NOTICE. THE USER SHALL BE RESPONSIBLE FOR OBTAINING THE LATEST EDITION.		DWN A. HOLT 22OCT2007		Tyco Electronics Harrisburg, PA 17105-3608	
CHK S. MANKARYOS 22OCT2007		NAME A. HOLT 22OCT2007		46 WAY PCM CONNECTOR HARNESS ASSEMBLY	
APVD S. MANKARYOS		PRODUCT SPEC		RESTRICTED TO	
APPLICATION SPEC		WEIGHT -		SCALE 4:1	
MATERIAL SEE TABLE		FINISH SEE TABLE		SHEET 5 OF 5	
CUSTOMER DRAWING		REVISIONS		REV S 11	

# Mouser Electronics

Authorized Distributor

Click to View Pricing, Inventory, Delivery & Lifecycle Information:

[TE Connectivity:](#)

[3-1438082-7](#)