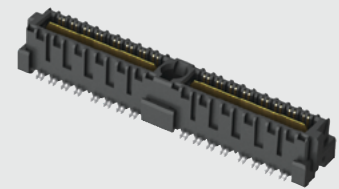


QMS-026-06.75-L-D-A



(0.635 mm) .025"

QMS SERIES

# RUGGED GROUND PLANE HEADER

## SPECIFICATIONS

For complete specifications and recommended PCB layouts see [www.samtec.com?QMS](http://www.samtec.com?QMS)

**Insulator Material:**

Liquid Crystal Polymer  
Terminal & Ground

**Plane Material:**

Phosphor Bronze

**Plating:**

Au over 50 μ" (1.27 μm) Ni

(Tin on Ground Plane Tail)

**Current Rating:**

Contact:  
2.6 A per pin

(2 pins powered)

Ground Plane:

15.7 A per ground plane

(1 ground plane powered)

**Operating Temp:**

-55 °C to +125 °C

**Voltage Rating:**

300 VAC mated with QFS

**RoHS Compliant:**

Yes

**Board Mates:**

QFS

**Cable Mates:**

6QCQD

**Standoffs:**

SO, JSOM

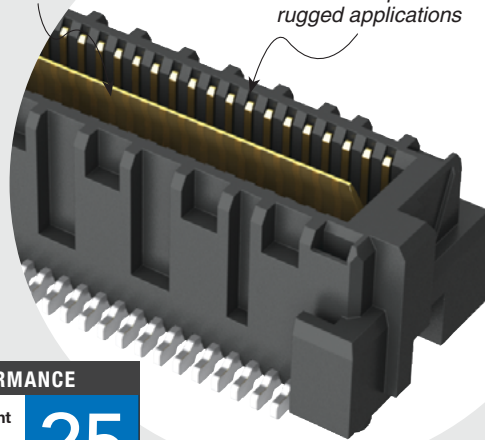
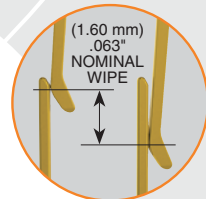
### ALSO AVAILABLE

(MOQ Required)

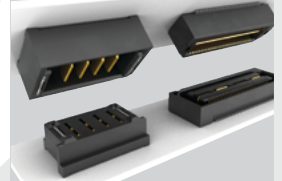
- Other platings
- Guide Posts
- Without PCB Alignment Pins (05.75 and 06.75 only)
- Hot Pluggable
- 64 (-DP) and 104 positions per row

Integral metal plane for power or ground

Increased insertion depth for rugged applications



### POWER/SIGNAL APPLICATION



Compatible with UMP/T/UMPS for flexible two-piece power/signal solutions

### HIGH-SPEED CHANNEL PERFORMANCE

QMS-DP/QFS-DP @ 10 mm Mated Stack Height

Rating based on Samtec reference channel. For full SI performance data visit [Samtec.com](http://Samtec.com) or contact [SIG@samtec.com](mailto:SIG@samtec.com)

25 Gbps

## PROCESSING

**Lead-Free Solderable:**

Yes

**SMT Lead Coplanarity:**

(0.10 mm) .004" max (026-052)

(0.15 mm) .006" max (078)\*

\*(.004" stencil solution may be available; contact [IPG@samtec.com](mailto:IPG@samtec.com))

**Board Stacking:**

For applications requiring more than two connectors per board, contact [ipg@samtec.com](mailto:ipg@samtec.com)

## RECOGNITIONS

For complete scope of recognitions see

[www.samtec.com/quality](http://www.samtec.com/quality)



## STANDARDS

- SUMIT™
- PCI/104-Express™
- PCI/104-Express™ OneBank

Visit [www.samtec.com/standards](http://www.samtec.com/standards) for more information.

**Note:**  
Some lengths, styles and options are non-standard, non-returnable.

<b>QMS</b>	<b>PINS PER ROW NO. OF PAIRS</b>	<b>LEAD STYLE</b>	<b>PLATING OPTION</b>	<b>TYPE</b>	<b>A</b>	<b>OTHER OPTION</b>
------------	----------------------------------	-------------------	-----------------------	-------------	----------	---------------------

**-026, -052, -078**  
(52 total pins per bank = -D)

**-016, -032, -048**  
(16 pairs per bank = -D-DP)

(-078 & -048 Not available with -09.75 lead style)

Specify LEAD STYLE from chart

**-L**

(-05.75 and -06.75 lead style only)  
= 10 μ" (0.25 μm) Gold on Signal Pins and Ground Plane (Tin on Signal Pin tails, and Ground Plane tails)

**-SL**

(-09.75 lead style only)  
= 10 μ" (0.25 μm) Gold on Signal Pins and Ground Plane (Tin on Signal Pin tails, and Ground Plane tails)

**-D**

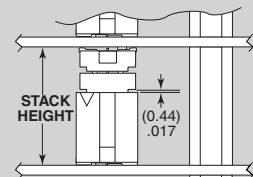
= Single-Ended

**-D-DP**

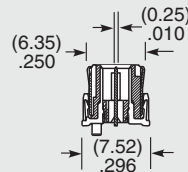
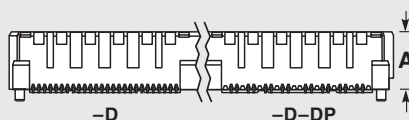
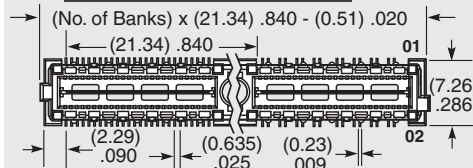
= Differential Pair

**-K**  
= (5.50 mm) .217" DIA Polyimide film Pick & Place Pad

### APPLICATION



Requires Standoff SO-1524-03-01-01-L or JSOM-1524-02 for 15.24 mm or SO-2215-02-01-01-L for 22 mm board spacing. Connectors designed to not fully seat when mated.



LEAD STYLE	A	MATED HEIGHT*	
		QFS LEAD STYLE -04.25	-06.25
-05.75	(5.38) .212	10 mm	12 mm
-06.75	(6.35) .250	11 mm	13 mm
-09.75	(9.35) .368	14 mm	16 mm

\*Processing conditions will affect mated height. See SO Series for board space tolerances.

INDUSTRY STANDARD	INTERCONNECTS			
	TERMINAL	SOCKET	BANKS	STACK HEIGHT
SUMIT™	ASP-129637-01	ASP-129646-01	1	15.24 mm
PCI/104-Express™	ASP-129637-03	ASP-129646-03	3	15.24 mm
PCI/104-Express™	ASP-129637-13	ASP-129646-22	1	15.24 mm
PCI/104-Express™	ASP-142781-01	ASP-129646-01	1	22 mm
PCI/104-Express™	ASP-142781-02	ASP-129646-02	2	22 mm
PCI/104-Express™	ASP-142781-03	ASP-129646-03	3	22 mm

# Mouser Electronics

Authorized Distributor

Click to View Pricing, Inventory, Delivery & Lifecycle Information:

## Samtec:

[QMS-026-05.75-L-D-A](#) [QMS-078-05.75-L-D-A](#) [QMS-078-06.75-L-D-A](#) [QMS-052-05.75-L-D-A](#) [QMS-052-01-SL-D-EM2](#) [QMS-052-06.75-L-D-PC4](#) [QMS-026-01-SL-D-RA-PC4](#) [QMS-026-09.75-SL-D-A](#) [QMS-026-06.75-L-D-A](#) [QMS-052-01-SL-D-RA-MG](#) [QMS-078-06.75-L-D-PC4](#) [QMS-026-06.75-L-D-PC4](#) [QMS-078-05.75-L-D-A-GP](#) [QMS-052-05.75-H-D-A](#) [QMS-026-05.75-H-D-A-RT1](#) [QMS-052-09.75-SL-D-A](#) [QMS-052-05.75-L-D-A-K-TR](#) [QMS-026-05.75-L-D-RF1](#) [QMS-052-06.75-L-D-A](#) [QMS-026-05.75-L-D-A-RT1](#) [QMS-026-01-SL-D-RA](#) [QMS-026-05.75-L-D-PC4](#) [QMS-052-09.75-SL-D-A-K](#) [QMS-052-01-SL-D-RA-MG-K](#) [QMS-078-01-SL-D-EM2](#) [QMS-026-05.75-L-D-A-K](#) [QMS-052-05.75-L-D-A-GP](#) [QMS-052-06.75-H-D-A-K](#) [QMS-052-05.75-L-D-PC4](#) [QMS-078-01-SL-D-RA-MG](#) [QMS-052-09.75-SL-D-A-K-TR](#) [QMS-052-01-SL-D-RA-PC4](#) [QMS-026-09.75-SL-D-A-K](#) [QMS-016-05.75-L-D-DP-A](#) [QMS-078-06.75-H-D-A](#) [QMS-052-06.75-H-D-A-GP](#) [QMS-032-06.75-H-D-DP-A-GP](#) [QMS-078-05.75-L-D-A-K-TR](#) [QMS-052-01-SL-D-RA-TR](#) [QMS-016-01-L-D-DP-EM2](#) [QMS-052-01-L-D-EM2-PC8](#) [QMS-064-01-L-D-DP-EM2](#) [QMS-078-01-L-D-EM2](#) [QMS-052-01-H-D-EM2-PC8](#) [QMS-052-01-H-D-EM2-PC4](#) [QMS-016-01-L-D-DP-EM2-PC4](#) [QMS-052-01-L-D-EM2-PC4](#) [QMS-052-01-L-D-EM2-TR](#) [QMS-032-01-L-D-DP-EM2](#) [QMS-052-01-H-D-EM2](#) [QMS-026-01-H-D-EM2](#) [QMS-104-01-H-D-EM2](#) [QMS-026-01-L-D-EM2](#) [QMS-032-05.75-L-D-DP-A](#) [QMS-032-05.75-L-D-DP-A-K-TR](#) [QMS-048-06.75-L-D-DP](#) [QMS-048-06.75-L-D-DP-A](#) [QMS-052-05.75-L-D-PT4](#) [QMS-052-05.75-L-D-PT8](#) [QMS-052-05.75-L-D-RF1](#) [QMS-064-01-SL-D-DP-RA](#) [QMS-064-01-SL-D-DP-RA-K](#) [QMS-078-01-SL-D-RA-PC4](#) [QMS-078-05.75-H-D-PC4](#) [QMS-104-06.75-L-D-A-K](#) [QMS-078-05.75-L-D-PT4](#) [QMS-078-06.75-L-D](#) [QMS-104-05.75-L-D-A-RT1](#) [QMS-064-01-L-D-EM2](#) [QMS-078-06.75-L-D-A-GP](#) [QMS-078-06.75-L-D-A-K](#) [QMS-052-05.75-H-D-PC8](#) [QMS-052-05.75-L-D-RF2](#) [QMS-064-06.75-L-D-DP-A](#) [QMS-078-05.75-L-D-RF2](#) [QMS-104-05.75-L-D-A-GP](#) [QMS-052-01-S-D-RA-PC4](#) [QMS-052-05.75-H-D-RF1](#) [QMS-052-05.75-L-D](#) [QMS-052-05.75-L-D-A-GP-K-TR](#) [QMS-052-06.75-L-D-A-GP](#) [QMS-052-06.75-L-D-A-K](#) [QMS-078-01-S-D-RA](#) [QMS-078-01-S-D-RA-PC8-K](#) [QMS-078-05.75-L-D-PT8](#) [QMS-104-05.75-H-D-A](#) [QMS-104-05.75-L-D-A](#) [QMS-078-06.75-H-D-A-GP-K](#) [QMS-104-05.75-L-D-A-K](#) [QMS-052-05.75-H-D-PC4](#) [QMS-052-06.75-H-D-PC4](#) [QMS-052-06.75-L-D-K](#) [QMS-078-05.75-L-D-A-RT1](#) [QMS-104-01-S-D-RA](#) [QMS-104-06.75-L-D](#) [QMS-048-06.75-H-D-DP-A](#) [QMS-052-01-SL-D-RA-K-TR](#) [QMS-078-05.75-H-D-A](#) [QMS-078-05.75-L-D](#) [QMS-104-01-L-D-EM2](#)