

Reversing load relay - ELR W1/ 2-24DC - 2963598


Please be informed that the data shown in this PDF Document is generated from our Online Catalog. Please find the complete data in the user's documentation. Our General Terms of Use for Downloads are valid (<http://phoenixcontact.com/download>)



Electronic reversing load relay, for driving DC motors, with light indicator and protection circuit, output: 10-30 V DC/2 A



Key Commercial Data

Packing unit	1 pc
GTIN	 4 017918 943592
GTIN	4017918943592

Technical data

Note

Utilization restriction	EMC: class A product, see manufacturer's declaration in the download area
-------------------------	---

Input data

Input name	Device supply
Nominal supply voltage	24 V DC \pm 20 %
Rated control circuit supply voltage U_s	24 V DC
Control supply voltage range	19.2 V DC ... 28.8 V DC
Protective circuit	Reverse polarity protection Polarity protection diode
	Surge protection
Operating voltage display	Green LED
Status display	LED yellow, forward running (R), LED yellow, reverse running (L)
Input name	Control input right/left
Nominal input voltage U_N	24 V DC
Input voltage range in reference to U_N	0.8 ... 1.2
Input voltage range	19.2 V DC ... 28.8 V DC
Typical input current at U_N	3 mA
Protective circuit	Reverse polarity protection

Reversing load relay - ELR W1/ 2-24DC - 2963598

Technical data

Input data

	Surge protection
Surge voltage protection	> 33 V DC
Typical response time	200 µs
Status display	LED yellow, forward running (R), LED yellow, reverse running (L)
Current consumption	3 mA
Switchover time R _L /L _L (turn-on time)	80 ms

Output data load output

Output name	DC output
Operating voltage range	10 V DC ... 30 V DC
Type of protection	Reverse polarity protection
	Surge protection

Connection data, control circuit

Connection name	Control circuits
Connection method	Screw connection
Stripping length	8 mm
Screw thread	M3
Conductor cross section solid	0.2 mm ² ... 6 mm ²
Conductor cross section flexible	0.2 mm ² ... 4 mm ²
Conductor cross section AWG	24 ... 10

Connection data load circuit

Connection name	Load circuit
Connection method	Screw connection
Stripping length	8 mm
Screw thread	M3
Conductor cross section solid	0.2 mm ² ... 6 mm ²
Conductor cross section flexible	0.2 mm ² ... 4 mm ²
Conductor cross section AWG	24 ... 10

General

Test voltage input/output	2.5 kV AC
Mounting position	Vertical (horizontal DIN rail)
Assembly instructions	any
Operating mode	100% operating factor

Dimensions

Width	12.5 mm
Height	99 mm
Depth	114.5 mm

Ambient conditions

Ambient temperature (operation)	-20 °C ... 60 °C
---------------------------------	------------------

Reversing load relay - ELR W1/ 2-24DC - 2963598

Technical data

Ambient conditions

Ambient temperature (storage/transport)	-20 °C ... 70 °C
Degree of protection	IP20

Standards and Regulations

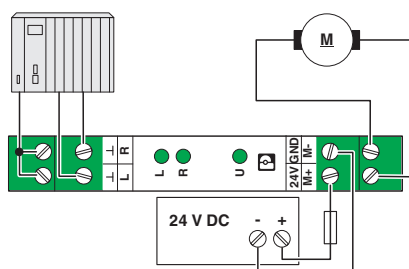
Designation	Air clearances and creepage distances between the power circuits
Standards/regulations	EN 50178
Insulation	Basic insulation
Degree of pollution	2
Overvoltage category	III

Environmental Product Compliance

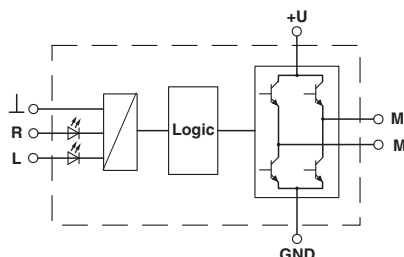
China RoHS	Environmentally Friendly Use Period = 50
	For details about hazardous substances go to tab "Downloads", Category "Manufacturer's declaration"

Drawings

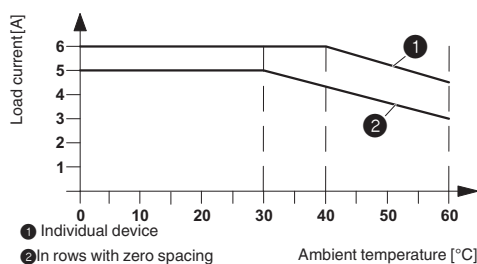
Connection diagram



Block diagram



Diagram



Approvals

Approvals

Approvals





UL Listed / cUL Listed / EAC / cULus Listed

Reversing load relay - ELR W1/ 2-24DC - 2963598

Approvals

Ex Approvals

Approval details

UL Listed		http://database.ul.com/cgi-bin/XYV/template/LISEXT/1FRAME/index.htm	FILE E 228652
cUL Listed		http://database.ul.com/cgi-bin/XYV/template/LISEXT/1FRAME/index.htm	FILE E 228652
EAC			RU C- DE.A*30.B.01082
cULus Listed			

Phoenix Contact 2018 © - all rights reserved
<http://www.phoenixcontact.com>

PHOENIX CONTACT GmbH & Co. KG
Flachsmarktstr. 8
32825 Blomberg
Germany
Tel. +49 5235 300
Fax +49 5235 3 41200
<http://www.phoenixcontact.com>

Mouser Electronics

Authorized Distributor

Click to View Pricing, Inventory, Delivery & Lifecycle Information:

[Phoenix Contact:](#)

[2963598](#)