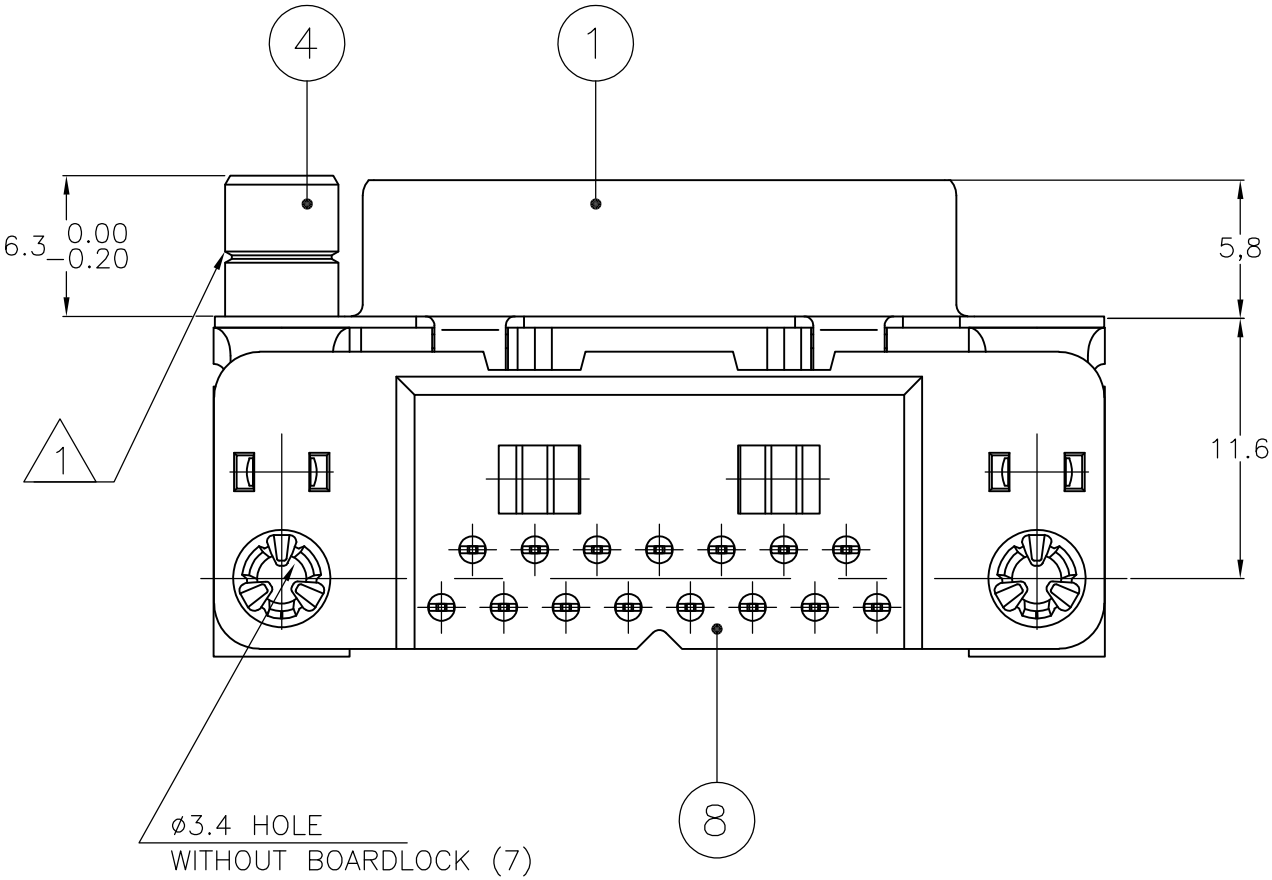
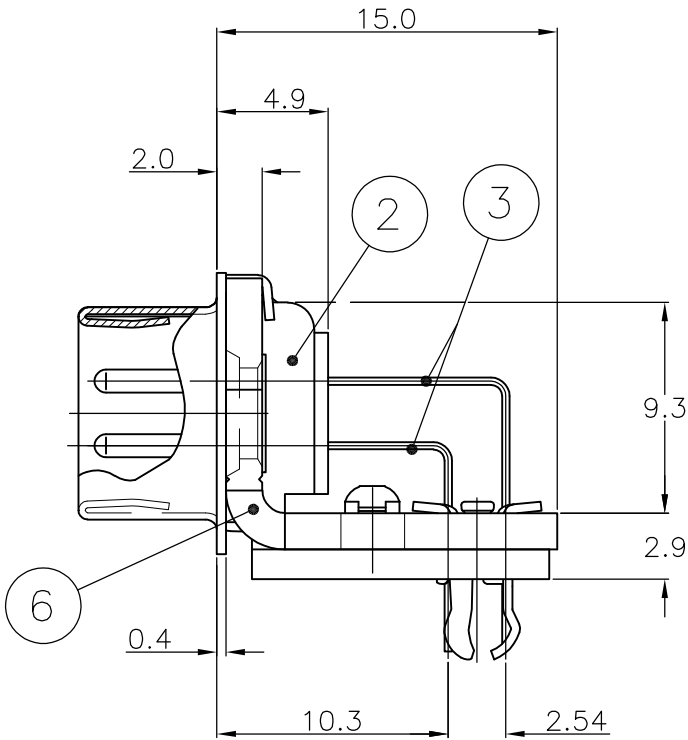
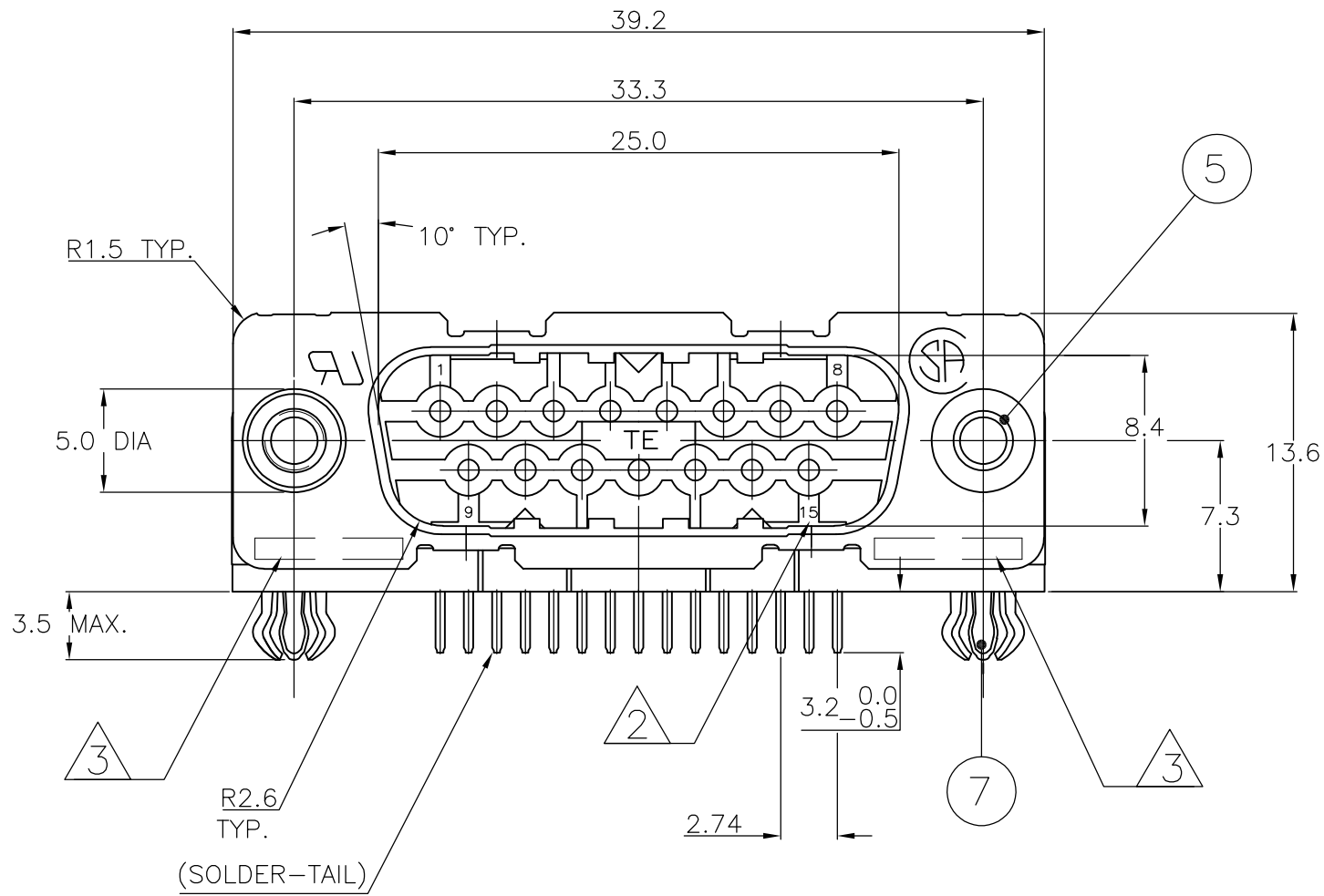
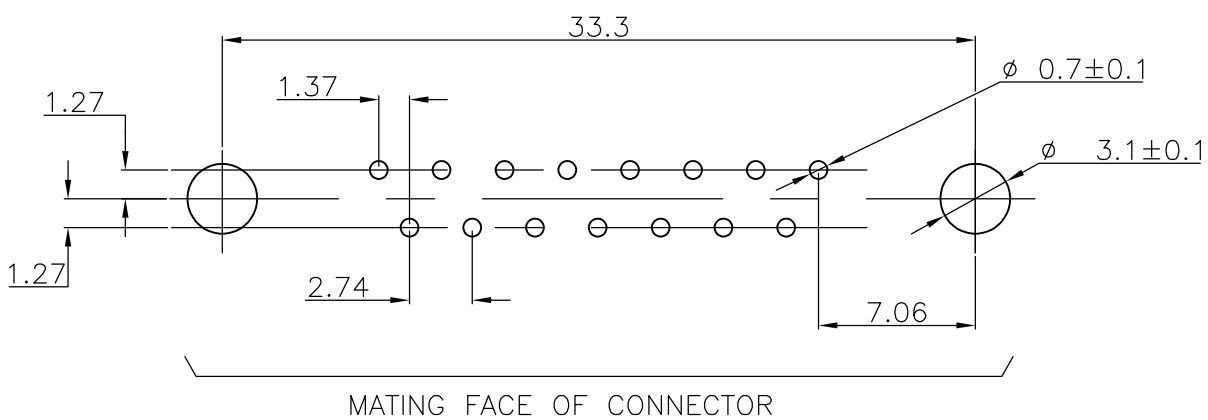


LOC	DIST	REVISIONS					
		P	LTR	DESCRIPTION		DATE	APVD
GP	00		L	REVISED PER ECO-15-004948		27APR2015	AP SB



RECOMMENDED P.C. BOARD HOLE-LAYOUT



ITEM NO	DESCRIPTION OF ACCESSORY	ACCESSORIES									
		5	5	5	4	4	7	ITEM NO	DESCRIPTION OF ACCESSORY		
5	Ø3.1 INSERT	2	2	2	2	2	2	338169-2	OBSOLETE		
5	INSERT WITH INNER THREAD 4-40 UNC	2	2	2	2	2	2	1-338169-2	OBSOLETE		
5	INSERT WITH INNER THREAD M3	2	2	2	2	2	2	2-338169-2	OBSOLETE		
4	FEMALE SCREWLOCK WITH 4-40 UNC	2	2	2	2	2	2	3-338169-2	OBSOLETE		
4	FEMALE SCREWLOCK WITH M3	2	2	2	2	2	2	4-338169-2	OBSOLETE		
7	BOARDLOCK	2	2	2	2	2	2	5-338169-2	OBSOLETE		
7	BOARDLOCK	2	2	2	2	2	2	6-338169-2	OBSOLETE		
7	BOARDLOCK	2	2	2	2	2	2	7-338169-2	OBSOLETE		
7	BOARDLOCK	2	2	2	2	2	2	8-338169-2	OBSOLETE		
7	BOARDLOCK	2	2	2	2	2	2	9-338169-2	OBSOLETE		

- 1 GROOVE INDICATES VERSION WITH 4-40 UNC INNER THREAD; WITHOUT GROOVE INDICATES VERSION WITH M3 INNER THREAD.
- 2 CAVITY IDENTIFICATION AT FRONT SIDE ONLY.
- 3 PART NUMBER AND DATE CODE.
4. SHELL HAS 2x4 GROUNDING SPRINGS; PITCH IS 3.6.
5. AIR AND CREEPAGE DISTANCES ACCORDING TO DIN 41652.
6. GOLD FLASH OVER PALLADIUM-NICKEL PLATE OR GOLD PLATE ON THE MATING SURFACES, TIN PLATE ON THE SOLDER-TAILS, NICKEL UNDERPLATE ON THE ENTIRE CONTACT. MATING SURFACE FINISH MEETS PERFORMANCE LEVEL 2 PER DIN 41652.

ITEM NO/MATERIAL :

- 1 SHELL : BRIGHT TIN PLATED STEEL
- 2 HOUSING : GLASS FILLED POLYESTER, COLOR : BLACK
- 3 CONTACTS : PHOSPHOR BRONZE (PLATING : SEE NOTES)
- 4 FEMALE SCREWLOCK : TIN PLATED STEEL (INNER THREAD 4-40 UNC OR M3)
- 5 INSERT : TIN PLATED STEEL (INNER THREAD 4-40 UNC OR M3 OR Ø3.1 THRU-HOLE)
- 6 BRACKET : TIN PLATED STEEL
- 7 BOARDLOCK : TIN PLATED PHOSPHOR BRONZE
- 8 SOLDER-TAIL ALIGNMENT PLATE : GLASS FILLED NYLON. COLOR : BLACK

THIS DRAWING IS A CONTROLLED DOCUMENT. DIMENSIONING AND TOLERANCING PER ASME Y14.5M-2009		DWN D. KESSLER	18JAN99	TE Connectivity	
DIMENSIONS: mm		CHK W.SOOMERS	-	NAME	
TOLERANCES UNLESS OTHERWISE SPECIFIED:		APVD -	-	HD-20 SIZE 2 RIGHT ANGLE PLUG HEADER; MARK II+	
0 PLC ± -		PRODUCT SPEC	-	SIZE CAGE CODE DRAWING NO	
1 PLC ± -		APPLICATION SPEC	-	RESTRICTED TO	
2 PLC ± -		WEIGHT	-	A2 00779 C=338169	
3 PLC ± -		CUSTOMER DRAWING	-	SCALE NTS SHEET 1 OF 1 REV L	
4 PLC ± -					
ANGLES ± -					
FINISH					

Mouser Electronics

Authorized Distributor

Click to View Pricing, Inventory, Delivery & Lifecycle Information:

[TE Connectivity:](#)

[2-338169-2](#)