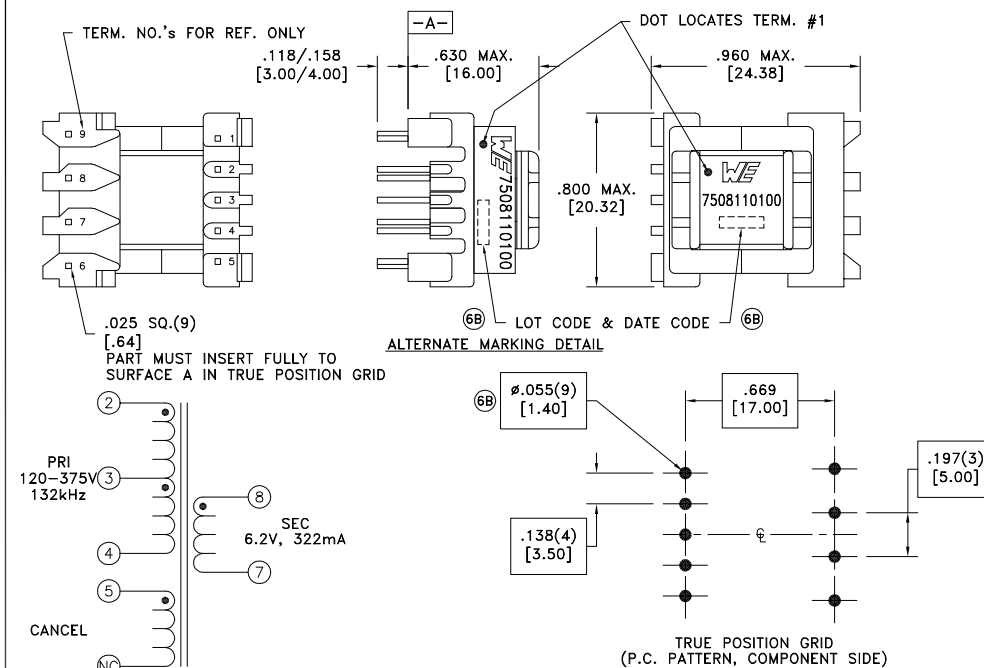


more than you expect

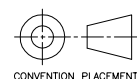


PARAMETER		TEST CONDITIONS	VALUE
D.C. RESISTANCE	2-3	@20°C	2.15 ohms ±10%
D.C. RESISTANCE	3-4	@20°C	2.85 ohms ±10%
D.C. RESISTANCE	7-8	@20°C	0.040 ohms ±20%
INDUCTANCE	2-4	10kHz, 100mVAC, Ls	2.64mH ±10%
SATURATION CURRENT		20% rolloff from initial	350mA
LEAKAGE INDUCTANCE	2-4	tie(7+8), 100kHz, 100mVAC, Ls	30uH typ., 50uH max.
DIELECTRIC RAIING	3-8	4500VAC, 1 second	4500VAC, 1 minute
DIELECTRIC RATING	5-8	4500VAC, 1 second	4500VAC, 1 minute
DIELECTRIC RATING	3-5	625VAC, 1 second	500VAC, 1 minute
URNS RATIO		(3-4):(2-3)	1:1, ±1%
URNS RATIO		(2-4):(8-7)	11.07:1, ±1%

OPERATING TEMPERATURE RANGE: -40°C to $+125^{\circ}\text{C}$ including temp rise.

- (6B) Designed to comply with the following requirements as defined by IEC61558-2-16:
 – Reinforced insulation for a primary circuit at a working voltage of 400VDC.

REV.	DATE	Packaging Specifications	 CONVENTION PLACEMENT
		Method: Tray	
6C	2/15	PKG-0735	
6B	6/13	www.we-online.com/midcom	
6A	3/09	SEE REVISION SHEET FOR REVISION LEVEL	



Tolerances unless otherwise specified:
 Angles: $\pm 1^\circ$ Decimals: $\pm .005$ [.13]
 Fractions: $\pm 1/64$ Footprint: $\pm .005$ [.13]

This drawing is dual dimensioned. Dimensions in brackets are in millimeters.

TRANSFORMER

eiSos p/n: 7508110100



7508110100

SPECIFICATION SHEET 1 OF 1

Mouser Electronics

Authorized Distributor

Click to View Pricing, Inventory, Delivery & Lifecycle Information:

[Wurth Electronics:](#)

[7508110100](#)