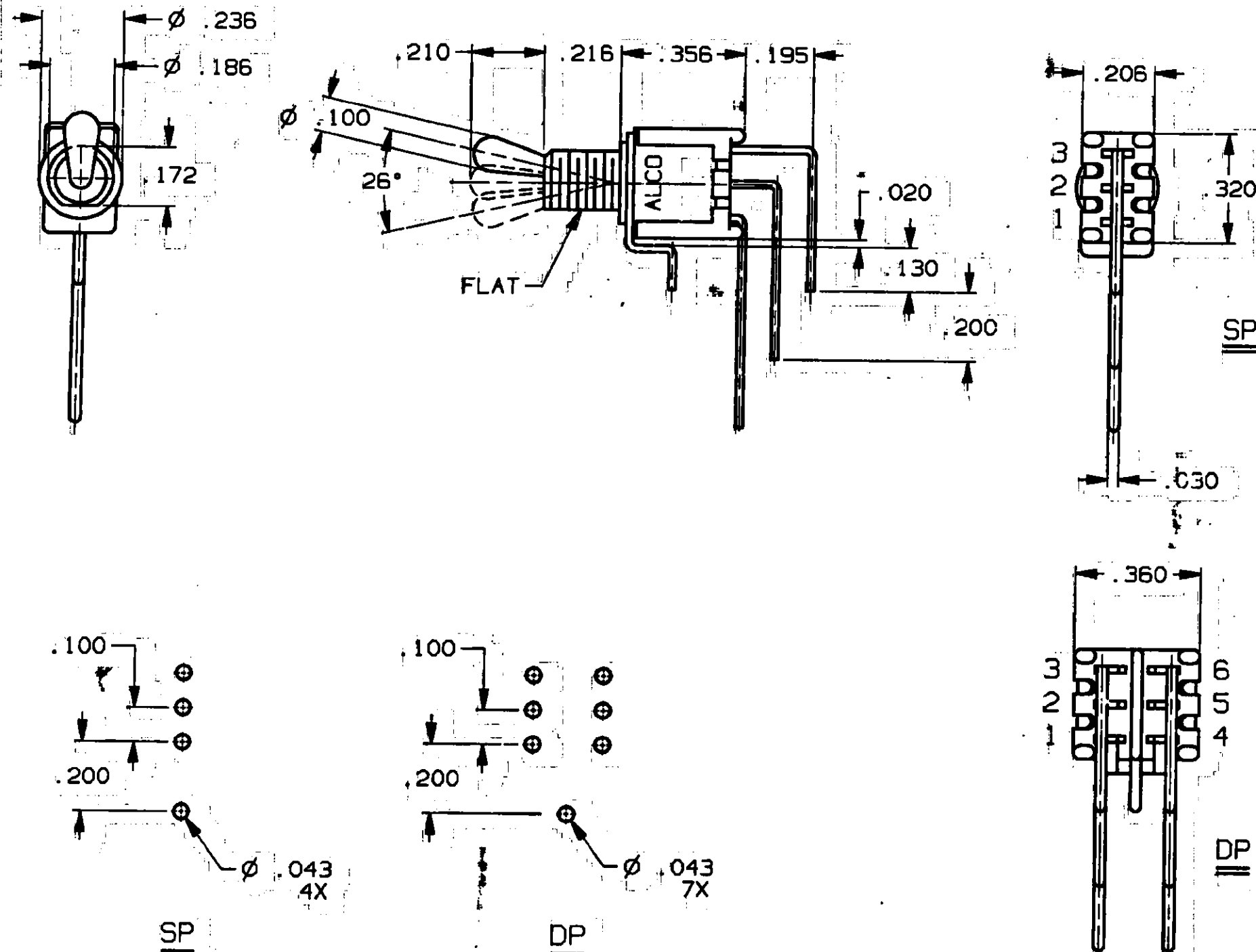


CONVERSION CHART	
INCH	MM
.002	0.05
.010	0.25
.015	0.38
.020	0.51
.030	0.76
.043	1.09
.100	2.54
.130	3.48
.150	3.81
.172	4.37
.186	4.72
.195	4.95
.200	5.08
.206	5.23
.210	5.33
.216	5.49
.236	5.99
.320	8.13
.356	9.04
.360	9.14



RECOMMENDED HOLE LAYOUT
TOLERANCE ± .002 UNLESS OTHERWISE NOTED

3 SPECIFICATIONS:

MATERIALS:
CASE: HIGH TEMPERATURE POLYESTER.
FRAME: STEEL, TIN PLATED.
ACTUATOR: COPPER ALLOY, NICKEL PLATED.
MOVABLE CONTACT: COPPER ALLOY, GOLD OVER NICKEL PLATE.
STATIONARY CONTACT: COPPER ALLOY, GOLD OVER NICKEL PLATE.
TERMINALS: COPPER ALLOY, TIN LEAD PLATED.
TERMINAL SEAL: EPOXY

ELECTRICAL:
CONTACT RATING: 0.4 VA @ 20 VDC OR PEAK AC
INITIAL CONTACT RESISTANCE: 20 MILLIOHMS MAX.
INSULATION RESISTANCE: 1,000 MEGOHMS AT 500 VDC MIN.
DIELECTRIC STRENGTH: 1,000 VOLTS RMS AT SEA LEVEL
LIFE EXPECTANCY: 80,000 CYCLES (2 POSITION)
60,000 CYCLES (3 POSITION)

ENVIRONMENTAL:
OPERATING TEMPERATURE: -22°F TO +185°F (-30°C TO +85°C)
STORAGE TEMPERATURE: -67°F TO +185°F (-55°C TO +85°C)

3 NOTES:

1. INTERPRET DRAWING PER ASME Y14.5M-1994.

TERMINALS CONNECTED WHEN TOGGLE IS IN POSITIONS SHOWN.			
FUNCTION CODE			
	123 456	123 456	123 456
TT21PG-VRA-1	2 TO 1 5 TO 4	OFF	2 TO 3 5 TO 6
TT21NG-VRA-1	2 TO 1 5 TO 4	NONE	2 TO 3 5 TO 6
TT11EG-VRA-1	2 TO 1	OFF	2 TO 3
TT11DG-VRA-1	2 TO 1	NONE	2 TO 3

NOTE:
TERMINAL DESIGNATION NUMBERS ARE FOR REFERENCE ONLY AND DO NOT APPEAR ON SWITCHES.

3

CUSTOMER DRAWING				AUGAT D/N 40158	
SPECIFICATIONS ARE SUBJECT TO CHANGES WITHOUT NOTICE					
THIRD ANGLE PROJECTION TOLERANCES (EXCEPT AS NOTED) ANGULAR = ±1° DECIMAL .XX = ±.010 DECIMAL .XXX = ±.010 DECIMAL .XXXX = ±.010	UNLESS OTHERWISE SPECIFIED DIMENSIONS ARE IN INCHES DO NOT SCALE PRINT	ORIGINAL DATE OF DRAWING: 8-6-83	TYCO ELECTRONICS		
	FILE NAME: 4015801.T	DIRECTORY: TINSWCH	DRAWN: E. RODRIQUEZ	DATE: 8-8-83	TITLE: CUSTOMER DRAWING
MATERIAL: SEE SPECIFICATIONS		CHECKED: B. BUCKHEIT	DATE: 8-8-83	SUBTITLE: TOGGLE SWITCH VRA SP, DP	
FINISH: SEE SPECIFICATIONS		APPROVED: RMM	DATE: 8-9-83	DMG. NO. 4-1437561-8	
		CODE IDENT. NO. 91506	DMG. SIZE C	REV. B	

Mouser Electronics

Authorized Distributor

Click to View Pricing, Inventory, Delivery & Lifecycle Information:

[TE Connectivity:](#)

[TT11DGVRA1](#)