

NOTES:

ELECTRICAL:

1. VOLTAGE RATING : 125 VAC RMS.
2. CURRENT RATING : 1.5 AMP.
3. CONTACT RESISTANCE : 30 MILLIOHMS MAX.
4. INSULATION RESISTANCE: 1000 MEGOHMS MIN @ 500 VDC.
5. DIELECTRIC STRENGTH : 1000 VAC RMS 60Hz, 1MIN.
6. OPERATING : 750 CYCLES MIN.

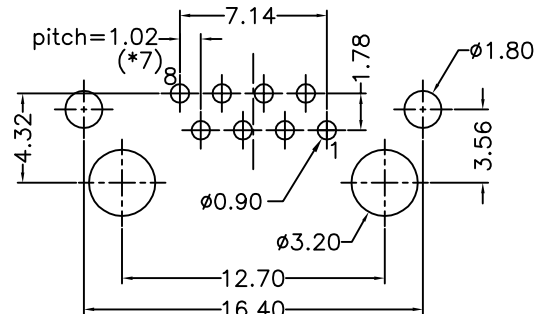
MECHANICAL:

1. HOUSING MATERIAL : GLASS FILLED PBT UL94V-0 COLOR-BLACK.
2. INSERT MATERIAL : GLASS FILLED PBT UL94V-0 COLOR-BLACK.
3. BACK PLATE MATERIAL : GLASS FILLED PBT COLOR-BLACK.
4. SHIELD MATERIAL : COPPER ALLOY T=0.25mm THICKNESS.
5. CONTACT MATERIAL : PHOSPHOR BRONZE t=0.35mm.
6. PLATING : CONTACT AREA-SELECTIVE GOLD PLATING.
TAILS-TIN 150u" MIN OVER NICKEL.
7. PCB RETENTION PRE-SOLDER : 1 LB MIN.
8. PCB RETENTION POST-SOLDER: 10 LBS MIN.

ENVIRONMENTAL:

1. STORAGE TEMPERATURE : -40°C TO +85°C.
2. OPERATION TEMPERATURE: -40°C TO +85°C.
3. WAVE SOLDERING TEMPERATURE: 230~250°C(3~5 SECONDS)
4. RoHS COMPLIANT.

MATES WITH MODULAR PLUG CONFORMING TO
FCC PART 68, SUBPART F.
CUL FILE NO. E163191



PC Board Layout T=1.6mm

Component Side Shown Tolerancer±0.05mm

PART NUMBER	GOLD PLATING
E5J88-61LOB1-L	3u"
E5J88-61LOB2-L	6u"
E5J88-61LOB4-L	30u"
E5J88-61LOB5-L	50u"

DETACHED LISTS	MM (INCH)	RoHS Compliant		
	TOLERANCES EXCEPT AS NOTED			
	MM		TITLE RJ45 W/O LED JACK	
	.0 ± 0.2	±		
	.00 ± 0.15	±		
	.000 ± 0.075	±		
	ANGLES ± 0.5			
THIRD ANGLE PROJECTION		DFTO Cathy	DRAWING NO. CE5J3A11-LC	SIZE REV
		DATE 2006/09/27	/PART NO. SEE TABLE	A3 0
		SCALE : 4:1	DO NOT SCALE DRAWING	SHEET 1 OF 1

Mouser Electronics

Authorized Distributor

Click to View Pricing, Inventory, Delivery & Lifecycle Information:

Pulse:

[E5J88-61L0B4-L](#)