



Copyright FCI.

A

B

C

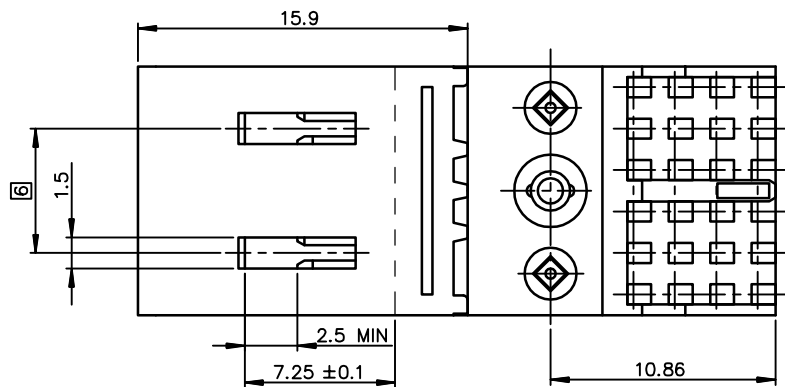
D

A

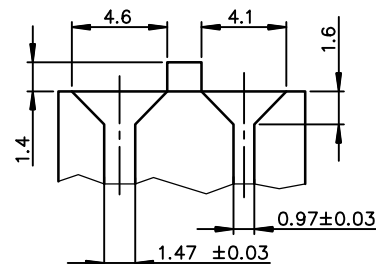
B

C

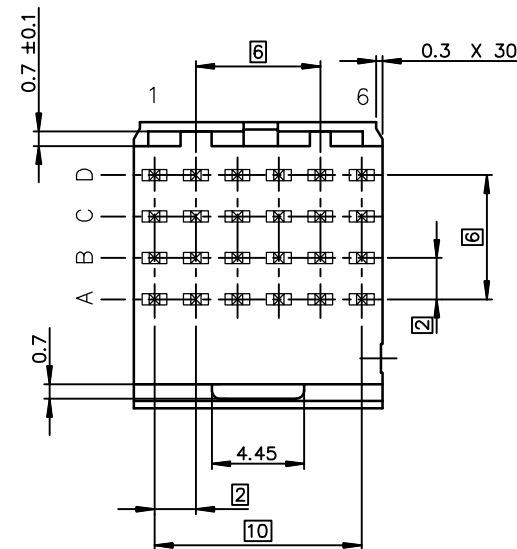
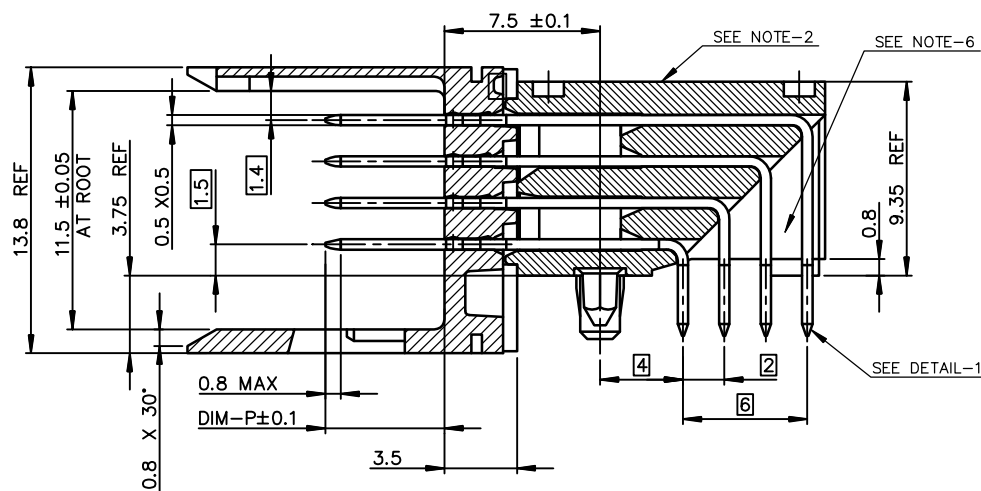
D



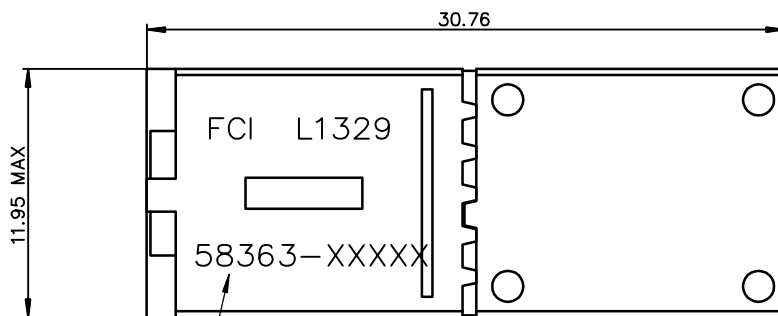
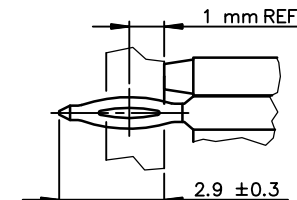
DETAIL-3: MATING SLOTS



- NOTE-1: GENERAL CHARACTERISTICS ACCORDING TO GS-12-445
NOTE-2: FLAT ROCK TOOL FOR PCB INSERTION
NOTE-3: EYE OF THE NEEDLE PRESS-FIT TYPE
NOTE-4: PRODUCT MARKING = PRODUCT PART NUMBER + FCI+ DATE CODE
NOTE-5: PLATING ON MATING PART : SEE PROD. SPEC GS-12-445
NOTE-6: CENTRAL WALL WITH END REAR SUPPORT
NOTE-7: STANDARD PACKAGING IS TUBE ,BUT IF SUFFIX "P" IS ADDED IN P/N,PACKAGING IS IN TRAYS,MARKING IS WITHOUT "P"
Example: 58363-1xxPLF ,marking 58363-1xxLF



DETAIL-1: PRESS-FIT TAIL



GENERAL CHARACTERISTICS AND ROHS INFORMATIONS:

SEE PRODUCT SPECIFICATION : GS-12-445

OTHERS INFORMATIONS,SEE DRW PAGE 2 AND 3

European Views

www.fciconnect.com		surface ISO 1302	tolerance std ISO 406 ISO 1101	projection mm
		TOLERANCES UNLESS OTHERWISE SPECIFIED		
Dr	CHAMPION	2003/07/15	ANGULAR	0.X ±0.1
Eng	LENOIR	2003/07/15	LINEAR	0.XX ±0.1
Chr	LEGARE	2003/07/15	0.XX ±2	0.XXX ±0.1
Appr	LEGARE	2003/07/15	Product family	
		METRAL		Spec ref -
title		METRAL RA HDR PFIT CONV.		Rev.
NB 4X6 - PUSH PEG		dwg no		E
catalog no		58363		
		CUSTOMER		sheet 1 of 3

rev	ecn no	dr	date
A	-	CHA	2003/07/15
B	LS05-0056	MLE	2005/06/13
C	LS06-0114	LGO	2006/08/10
D	LS07-0134	MLE	2007/05/11
E	06-012008-1	QinDF	2012/06/25
-	-	-	-
-	-	-	-

1

2

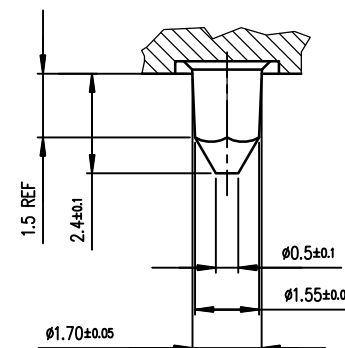
3

4

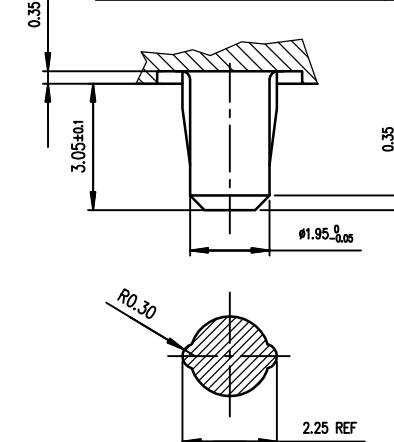
PART NUMBER / CONTACT LOADING

DIM-P ± 0.10					TIN LEAD PART NUMBER	LEAD-FREE PART NUMBER	LOADING CONFIGURATION
ROW-A	ROW-B	ROW-C	ROW-D				
5.00	5.00	5.00	5.00		58363-X01	58363-X01LF	FULLY LOADED
5.00	5.75	5.00	5.00		58363-X02	58363-X02LF	
5.00	5.75	6.50	5.00		58363-X03	58363-X03LF	
5.00	5.00	6.50	5.00		58363-X04	58363-X04LF	
5.75	5.75	5.75	5.75		58363-X05	58363-X05LF	
6.50	5.75	5.00	5.75		58363-X06	58363-X06LF	
6.50	6.50	6.50	5.75		58363-X07	58363-X07LF	
6.50	5.75	6.50	5.75		58363-X08	58363-X08LF	
6.50	5.00	5.00	5.00		58363-X09	58363-X09LF	
5.00	5.00	5.00	5.00		58363-X11	58363-X11LF	SEE PAGE 3 TABLE
5.00	5.00	5.00	5.00		58363-X21	58363-X21LF	SEE PAGE 3 TABLE

DETAIL OF LOCATING PEGS (2x) SCALE 8/1

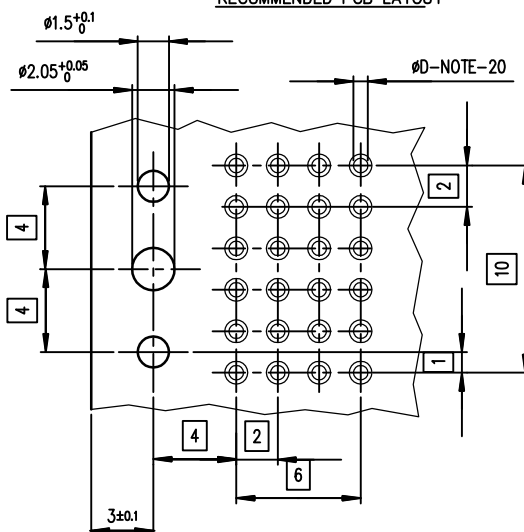


DETAIL OF CENTRAL PEG SCALE 8/1



PART NUMBER	PERFORMANCE LEVEL
58363-1yy(LF)	STANDARD P/N, See Prod. Spec GS-12-445
58363-3yy(LF)/Xyy(LF)	Customer Special, Specific Plating

RECOMMENDED PCB LAYOUT



NOTE-20: PTH DIMENSIONS - ØD
 - DRILL DIAMETER = (0.85 REF) and Plating
 See Product Spec : GS-12-445

OTHERS INFORMATIONS,SEE DRW PAGE 1 AND 3

European Views

rev	ecn no	dr	date
E			

www.fciconnect.com			surface ISO 1302	tolerance std ISO 406 ISO 1101	projection size A3	mm Scale 4
			TOLERANCES UNLESS OTHERWISE SPECIFIED			
Dr	CHAMPION	2003/07/15	ANGULAR 0.XX ± 2	0.X	±0.1	ECN
Eng	LENOIR	2003/07/15		0.XX	±0.1	
Chr	LEGARE	2003/07/15		0.XXX	±0.1	
Appr	LEGARE	2003/07/15	Product family		METRAL	Spec ref -
FCI			title			Rev.
			METRAL RA HDR PFIT CONV			E
			NB 4X6 - PUSH PEG			
			catalog no			
			dwg no			
			58363			
			CUSTOMER			sheet 2 of 3

1

2

3

4

A

A

PRODUCT NO	ROW	6	5	4	3	2	1
58363-X11 58363-X11LF	D	X	-	X	X	X	X
	C	X	-	X	X	X	X
	B	-	-	X	X	-	-
	A	X	-	X	X	-	X

58363-X21 58363-X21LF	D	X	-	X	-	X	-
	C	-	X	-	X	-	X
	B	X	-	X	-	X	-
	A	-	X	-	X	-	X

LOAD PATTERN	
X	LOADED
-	NOT LOADED

B

B

C

C



Copyright FCI.




D

D

OTHERS INFORMATIONS,SEE DRW PAGE 1 AND 2

European Views

rev	ecn no	dr	date
E			

www.fciconnect.com			surface ISO 1302		✓	tolerance std ISO 406 ISO 1101		projection 		mm 		
			TOLERANCES UNLESS OTHERWISE SPECIFIED									
Dr	CHAMPION	2003/07/15	ANGULAR	LINEAR	0.X		±0.1	size A3	Scale 4			
Eng	LENOIR	2003/07/15			0.XX		±0.1					
Chr	LEGARE	2003/07/15			0.XX ±2		±0.1					
Appr	LEGARE	2003/07/15	Product family				METRAL		Spec ref -			
			title					dwg no			Rev.	
			METRAL RA HDR PFIT CONV					58363			E	
			NB 4X6 - PUSH PEG									
			catalog no					-		CUSTOMER		
										sheet 3 of 3		

1

2

3

4

PDS: Rev :E

STATUS:Released

Printed: Jun 25, 2012

Mouser Electronics

Authorized Distributor

Click to View Pricing, Inventory, Delivery & Lifecycle Information:

[FCI / Amphenol:](#)

[58363-111LF](#) [58363-121LF](#)