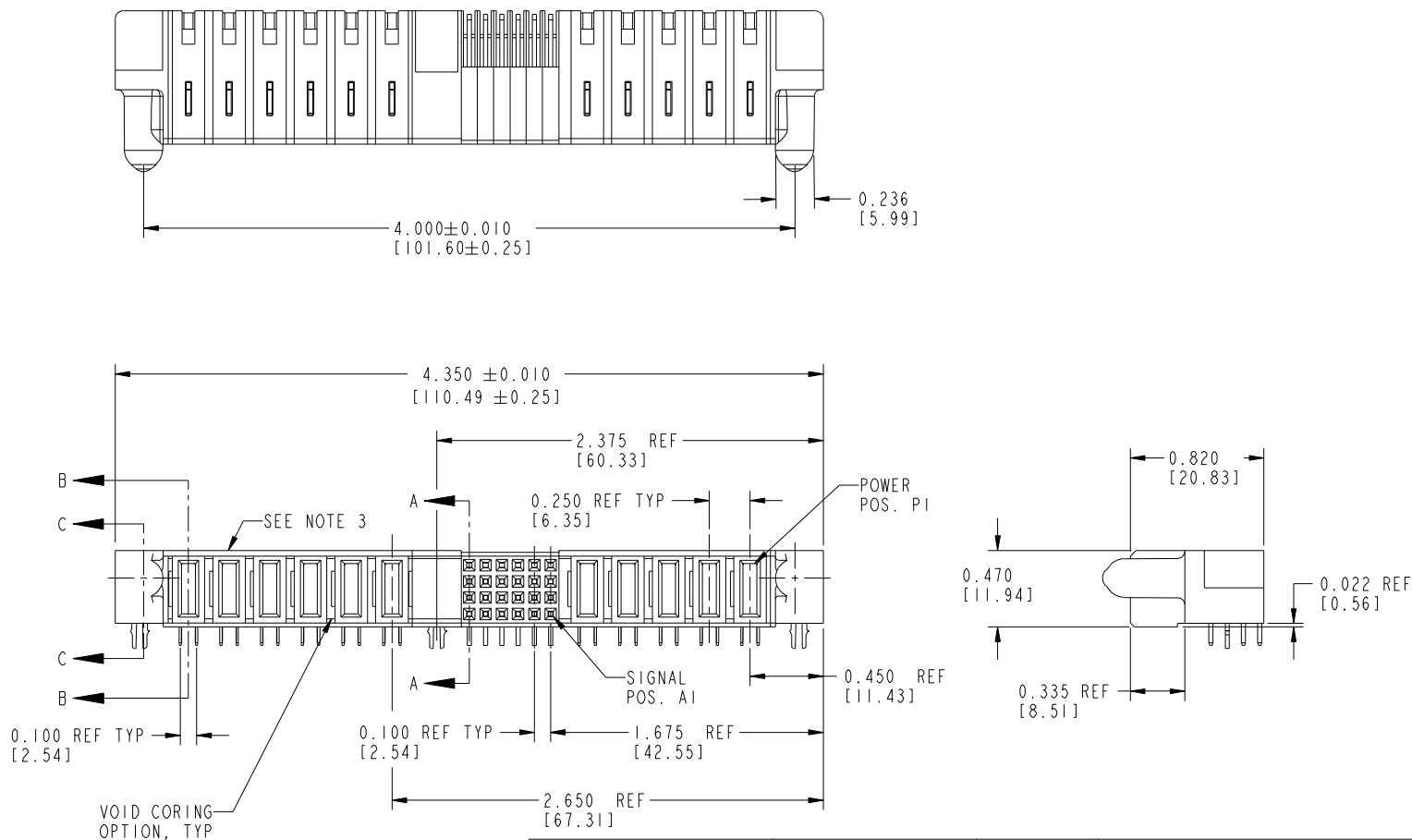




All rights strictly reserved. Reproduction or issue to third parties in any form whatever is not permitted without written authority from the proprietor. Property of FCI. Copyright FCI.

Tous droits strictement réservés. Reproduction ou communication à des tiers interdite sous quelque forme que ce soit sans autorisation écrite du propriétaire. Propriété de c FCI. Droits de reproduction FCI.

PRODUCT NUMBER
SEE SHEET 3



mat'l code				NOTE 1		tolerances unless otherwise specified		CUSTOMER		FCI	
litr	ecn no.	dr	date			.XX±.01/.X±.3		COPY		www.fciconnect.com	
N	DG05-0242	SJ	07/25/05	linear		.XXX±.005/.XX±.13		projection		title 5P + 24S + 1M + 6P	
P	DG05-0313	SJ	09/05/05			.XXXX±.0020/.XX±.051				R/A SOLDER RECEPT.	
R	DG05-0338	SW	09/19/05	angles		0° ± 2°				product family PwrBlade	
S	DG05-0550	GuoJM	12/16/05	dr	D. WOLFORD	01/21/99		INCH/MM		size	code 213
T	DG08-0239	JC	09/12/08	enrg	J. BROWN	01/21/99		scale		dwg no	sheet 1 of 4
				chr	J. BROWN	01/21/99				51625	
				appd	J. BROWN	01/21/99					
sheet index	revision sheet	T	T	T	T						
		1	2	3	4						

Pro/E

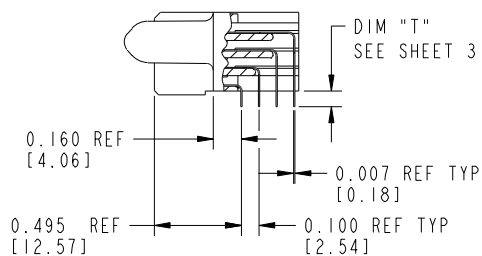
cage code 22526

Tous droits strictement réservés. Reproduction ou communication à des tiers interdite sous quelque forme que ce soit sans autorisation écrite du propriétaire. Propriété de c FCI. Droits de reproduction FCI.

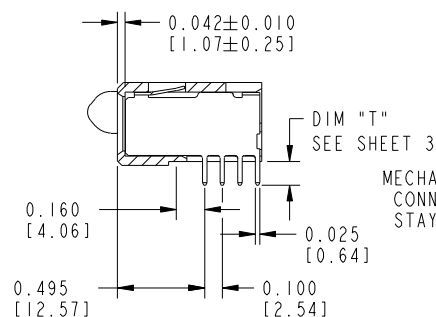


All rights strictly reserved. Reproduction or issue to third parties in any form whatever is not permitted without written authority from the proprietor. Property of FCI. Copyright FCI.

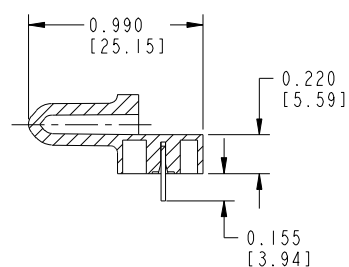
PRODUCT NUMBER
SEE SHEET 3



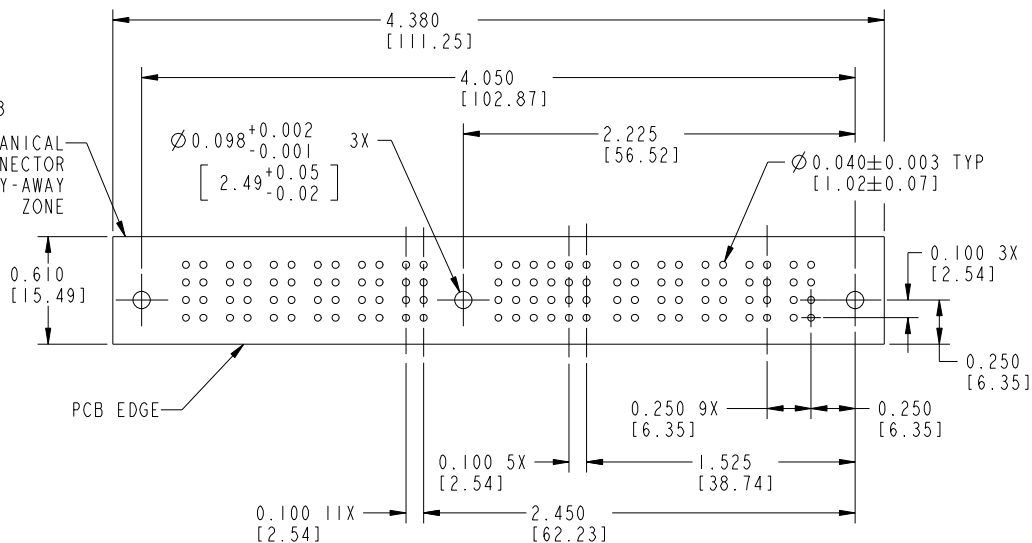
SECTION A-A



SECTION B-B



SECTION C-C



RECOMMENDED PCB LAYOUT

mat'l code				NOTE 1		tolerances unless otherwise specified		CUSTOMER		FCI	
litr	ecn no.	dr	date	linear	.XX±.01/.XX±.3	.XXX±.005/.XX±.13	.XXXX±.0020/.XXX±.051	COPY		www.fciconnect.com	
T								projection		title 5P + 24S + 1M + 6P	
								0° ± 2°		R/A SOLDER RECEPT.	
				angles				INCH/MM		product family PwrBlade	
				dr	D. WOLFORD	01/21/99		scale 1:1		code 213	
				enr	J. BROWN	01/21/99		size A		sheet 2	
				chr	J. BROWN	01/21/99		dwg no 51625			
				appd	J. BROWN	01/21/99					
sheet index	revision sheet										
								cage code 22526			

Pro/E

Tous droits strictement reserves. Reproduction ou communication a des tiers interdite sous quelque forme que ce soit sans autorisation écrite du propriétaire. Propriete de c FCI. Droits de reproduction FCI.



All rights strictly reserved. Reproduction or issue to third parties in any form whatever is not permitted without written authority from the proprietor. Property of FCI. Copyright FCI.

PRODUCT NUMBER
SEE TABLE

1 | 2

3 |

4

CODE	DIM "T"		DIM "T"		CONTACT TYPE
	+0.005 [0.12]	-0.010 [0.25]	± 0.010 [0.25]		
E	-	-	0.135 [3.43]		SIGNAL
F	-	-	0.135 [3.43]		SIGNAL
G	-	-	0.135 [3.43]		SIGNAL
H	-	-	0.135 [3.43]		SIGNAL
J	0.090 [2.29]		-	-	SIGNAL
K	0.090 [2.29]		-	-	SIGNAL
L	0.090 [2.29]		-	-	SIGNAL
M	0.090 [2.29]		-	-	SIGNAL
PA	-	-	0.135 [3.43]		POWER
PB	0.090 [2.29]		-	-	POWER
HA	N/A [N/A]		-	-	HOLD-DOWN

PRODUCT No.	ROWS	POWER										SIGNAL					POWER				
		E2	P11	P10	P9	P8	P7	P6	M1	6	5	4	3	2	1	P5	P4	P3	P2	P1	E1
51625-XX001-- NOTE: 2	D C B A																				

PRODUCT No.	ROWS	POWER										SIGNAL					POWER				
		E2	P11	P10	P9	P8	P7	P6	M1	6	5	4	3	2	1	P5	P4	P3	P2	P1	E1
51625-XX002-- NOTE: 2	D C B A																				

mat'l code				NOTE 1		tolerances unless otherwise specified		CUSTOMER		FCI	
litr	ecn no.	dr	date					COPY		www.fciconnect.com	
T						linear	.XX \pm .01/.X \pm .3	projection		title 5P + 24S + 1M + 6P R/A SOLDER RECEPT.	
							.XXX \pm .005/.XX \pm .13			product family PwrBlade	
						angles	.XXX \pm .0020/.XX \pm .051	INCH/MM		code 213	
						dr	D. WOLFORD 01/21/99	scale		size 51625	
						enrg	J. BROWN 01/21/99	1:1		sheet 3	
						chr	J. BROWN 01/21/99				
						appd	J. BROWN 01/21/99				
sheet index	revision sheet										

1 | 2

Pro/E

3 |

cage code 22526

4



All rights strictly reserved. Reproduction or issue to third parties in any form whatever is not permitted without written authority from the proprietor.
Property of FCI. Copyright FCI.

Tous droits strictement reserves. Reproduction ou communication a des tiers interdite sous quelque forme que ce soit sans autorisation écrite du propriétaire.
Propriete de c FCI. Droits de reproduction FCI.

A

B

1 | 2

3 |

4

PRODUCT NUMBER
SEE SHEET 3

CONNECTOR NOTES:

- HOUSING MATERIAL: UL 94 V-0 GLASS FILLED HIGH TEMP THERMOPLASTIC
POWER CONTACT MATERIAL: COPPER ALLOY
SIGNAL CONTACT MATERIAL: COPPER ALLOY

- PLATING: (51625-XX00X STAND OFF 51625-XX001 AND 51625-XX002)
SEE ITEM 5 & 6 IN PRINT 10064183 FOR PLATING SPEC OF 51625-XX00X AND 51625-XX00XLF RESPECTIVELY

- MANUFACTURER'S NAME, P/N, AND DATE CODE TO APPEAR ON THIS SURFACE
- PRODUCT SPECIFICATION GS-12-149

PCB NOTES:

- ALL DIMENSIONS ARE BASIC UNLESS OTHERWISE SPECIFIED.
- ALL THROUGH HOLES ARE LOCATED WITH A TRUE POSITION OF 0.004 [0.10]
- ALL HOLE DIAMETERS ARE FINISHED HOLE SIZE
- $\varnothing 0.098 [2.49]$ THROUGH HOLES ARE UNPLATED.
- $\varnothing 0.0453 \pm 0.0010 [1.151 \pm 0.025]$ DRILLED HOLES PLATED WITH 0.0003 [0.008] MIN SnPb OVER 0.001 [0.03] TO 0.003 [0.08] Cu PLATING TO ACHIEVE A $\varnothing 0.040 \pm 0.003 [1.02 \pm 0.07]$ HOLE.
- A \triangle SYMBOL WILL BE NEXT TO ANY DIMENSION, VIEW, OR NOTE WHICH HAS BEEN MODIFIED WITH THE CURRENT DRAWING REVISION.

A

CONFIDENTIAL

mat'l code				NOTE 1		tolerances unless otherwise specified		CUSTOMER		FCI		www.fciconnect.com	
litr	ecn no.	dr	date					COPY					
T						linear	.XX±.01/.X±.3	projection		title	5P + 24S + 1M + 6P		
							.XXX±.005/.XX±.13				R/A SOLDER RECEPT.		
						angles	.XXX±.0020/.XX±.051						
							0° ± 2°						
						dr	D. WOLFORD 01/21/99	INCH/MM		product family	PRODUCT_FAMILY: 3	code	
						enrg	J. BROWN 01/21/99			size	dwg no	213	
						chr	J. BROWN 01/21/99	scale				sheet	
						appd	J. BROWN 01/21/99	1:1				4	
sheet index		revision sheet											

B

1 | 2

Pro/E

3 |

cage code 22526

4

Mouser Electronics

Authorized Distributor

Click to View Pricing, Inventory, Delivery & Lifecycle Information:

[FCI / Amphenol:](#)

[51625-XX001LF](#) [51625-XX001](#) [51625-XX004LF](#) [51625-XX003LF](#) [51625-XX002LF](#)