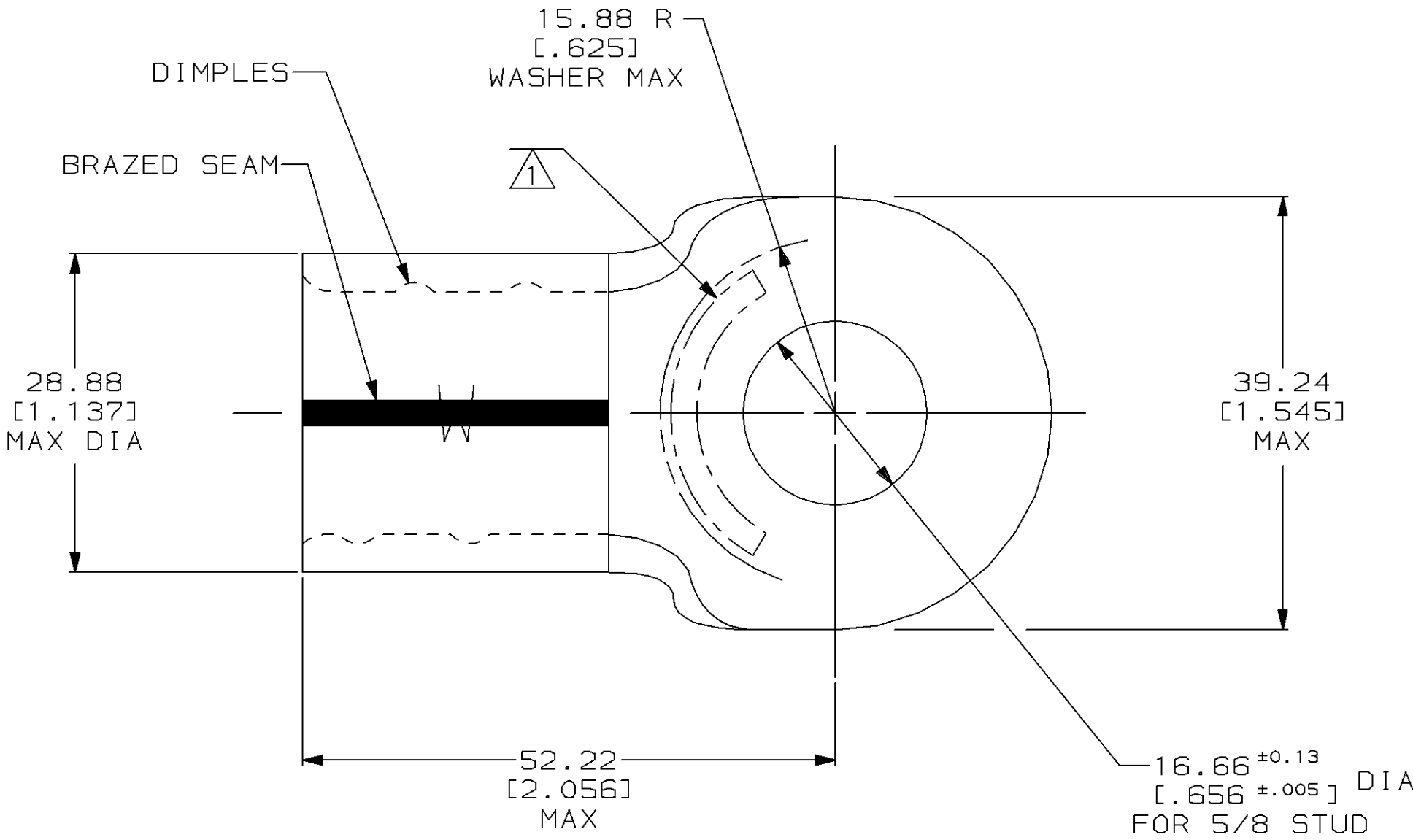


LOC	DIST	P	F	ZONE	LTR	DESCRIPTION	DATE	APPD
G	14				D	REVISED & REDRAWN PER 0720-0134-93	10/7/93	AJK



METRIC

DIMENSIONS LISTED IN mm [ INCHES ]

<b>AMP</b> WIRE RANGE	<b>UL</b> E13288 Listed
300-350 MCM SOLID OR STRANDED	300-350 MCM STRANDED
<b>LR7189</b> Certified	MILITARY P/N AND CLASS
NOT CERTIFIED	NOT APPLICABLE

1 STAMP AMP 300-350 MCM APPROX AS SHOWN

AMP INCORPORATED CUSTOMER SERVICE SYSTEMS			MAX RECOMMENDED OPERATING TEMPERATURE: 170°C MAX			324105		
FOR ADDITIONAL PRODUCT INFORMATION OR COPIES OF DRAWINGS AND TECHNICAL DOCUMENTS			VOLTAGE RATING: NOT APPLICABLE			PART NO		
FOR APPLICATION TOOLING INFORMATION			WIRE CROSS SECTIONAL AREA RANGE: 152.0-193.0mm² [300,000-380,000] CIR MILS SOLID OR STRANDED			AMP Incorporated Harrisburg, PA 17105-3608		
FOR ORDER ENTRY			THIS DRAWING IS A CONTROLLED DOCUMENT FOR AMP INCORPORATED. IT IS SUBJECT TO CHANGE AND THE CONTROLLING ENGINEERING ORGANIZATION SHOULD BE CONTACTED FOR THE LATEST REVISION.			NAME TERMINAL, RING TONGUE, SOLISTRAND™, WIRE SIZE: 300-350 MCM		
			DO NOT SCALE PRINT. UNLESS SPECIFIED DIMENSIONS IN mm [INCHES] TOLERANCES ON: 2 PLC DEC ± 0.20[.008] 3 PLC DEC ± - ANGLES ± -			DR 10/7/93 DK SCHRUM		
			COPPER PER ASTM B-152 ANNEALED			CHK 10/13/93 AJ KAUFMAN		
			FINISH TIN PLATE 0.00254[.000100] MIN THK PER MIL-T-10727			APPD 10/13/93 RE ROSER		
						APPD 10/13/93 JL MECKLEY		
						PRODUCT SPEC -		
						APPLICATION SPEC -		
						WEIGHT -		
						SIZE 2:1		
						CAGE CODE 00779		
						DRAWING NO C-324105		
						SHEET 1 OF 1		

# Mouser Electronics

Authorized Distributor

Click to View Pricing, Inventory, Delivery & Lifecycle Information:

[TE Connectivity:](#)

[324105](#)