

## Base strip - MSTBVA 2,5/20-G - 1755684

Please be informed that the data shown in this PDF Document is generated from our Online Catalog. Please find the complete data in the user's documentation. Our General Terms of Use for Downloads are valid (<http://phoenixcontact.com/download>)


Header, Nominal current: 12 A, Rated voltage (III/2): 320 V, Number of positions: 20, Pitch: 5 mm, Color: green, Contact surface: Tin, Mounting: Wave soldering



The figure shows a 10-position version of the product



### Key Commercial Data

|                                      |                                                                                                         |
|--------------------------------------|---------------------------------------------------------------------------------------------------------|
| Packing unit                         | 1 pc                                                                                                    |
| GTIN                                 | <br>4 017918 029265 |
| Weight per Piece (excluding packing) | 8.34 g                                                                                                  |
| Custom tariff number                 | 85366990                                                                                                |
| Country of origin                    | Germany                                                                                                 |

### Technical data

#### Dimensions

|                          |          |
|--------------------------|----------|
| Length                   | 8.6 mm   |
| Pitch                    | 5.00 mm  |
| Dimension a              | 95 mm    |
| Width                    | 102 mm   |
| Constructional height    | 12 mm    |
| Height                   | 15.9 mm  |
| Length of the solder pin | 3.9 mm   |
| Pin dimensions           | 1 x 1 mm |
| Hole diameter            | 1.4 mm   |

#### General

## Base strip - MSTBVA 2,5/20-G - 1755684

### Technical data

#### General

|                                        |                  |
|----------------------------------------|------------------|
| Range of articles                      | MSTBVA 2,5/...-G |
| Insulating material group              | IIIa             |
| Rated surge voltage (III/3)            | 4 kV             |
| Rated surge voltage (III/2)            | 4 kV             |
| Rated surge voltage (II/2)             | 4 kV             |
| Rated voltage (III/3)                  | 250 V            |
| Rated voltage (III/2)                  | 320 V            |
| Rated voltage (II/2)                   | 400 V            |
| Connection in acc. with standard       | EN-VDE           |
| Nominal current I <sub>N</sub>         | 12 A             |
| Maximum load current                   | 12 A             |
| Insulating material                    | PBT              |
| Flammability rating according to UL 94 | V0               |
| Color                                  | green            |
| Number of positions                    | 20               |

#### Standards and Regulations

|                                        |        |
|----------------------------------------|--------|
| Connection in acc. with standard       | EN-VDE |
|                                        | CSA    |
| Flammability rating according to UL 94 | V0     |

### Classifications

#### eCl@ss

|            |          |
|------------|----------|
| eCl@ss 4.0 | 272607xx |
| eCl@ss 4.1 | 27260701 |
| eCl@ss 5.0 | 27260701 |
| eCl@ss 5.1 | 27260701 |
| eCl@ss 6.0 | 27260704 |
| eCl@ss 7.0 | 27440402 |
| eCl@ss 8.0 | 27440402 |
| eCl@ss 9.0 | 27440402 |

#### ETIM

|          |          |
|----------|----------|
| ETIM 3.0 | EC001121 |
| ETIM 4.0 | EC002637 |
| ETIM 5.0 | EC002637 |

# Base strip - MSTBVA 2,5/20-G - 1755684

## Classifications

### UNSPSC

|               |          |
|---------------|----------|
| UNSPSC 6.01   | 30211810 |
| UNSPSC 7.0901 | 39121409 |
| UNSPSC 11     | 39121409 |
| UNSPSC 12.01  | 39121409 |
| UNSPSC 13.2   | 39121409 |

## Approvals

### Approvals

---

#### Approvals

CSA / VDE Gutachten mit Fertigungsüberwachung / IEC60335 CB Scheme / EAC / cULus Recognized / EAC

---


#### Ex Approvals


---

#### Approvals submitted

---

## Approval details

|                                                                                         |       |       |
|-----------------------------------------------------------------------------------------|-------|-------|
| CSA  |       |       |
|                                                                                         | B     | D     |
| Nominal current I <sub>N</sub>                                                          | 12 A  | 10 A  |
| Nominal voltage U <sub>N</sub>                                                          | 300 V | 300 V |

|                                                                                                                             |       |
|-----------------------------------------------------------------------------------------------------------------------------|-------|
| VDE Gutachten mit Fertigungsüberwachung  |       |
| Nominal current I <sub>N</sub>                                                                                              | 12 A  |
| Nominal voltage U <sub>N</sub>                                                                                              | 250 V |

# Base strip - MSTBVA 2,5/20-G - 1755684

## Approvals

|                    |       |
|--------------------|-------|
| IECEE CB Scheme    |       |
| Nominal current IN | 12 A  |
| Nominal voltage UN | 250 V |

|     |
|-----|
| EAC |
|-----|

|                    |       |       |
|--------------------|-------|-------|
| cULus Recognized   |       |       |
|                    | B     | D     |
| Nominal current IN | 12 A  | 10 A  |
| Nominal voltage UN | 300 V | 300 V |

|     |
|-----|
| EAC |
|-----|

## Accessories

### Accessories

#### Coding element

Coding star - CR-MSTB - 1734401



Coding section, inserted into the recess in the header or the inverted plug, red insulating material

#### Filler plug

Accessories - MSTB-BL - 1755477



Keying cap, for forming sections, plugs onto header pin, green insulating material

#### Labeled terminal marker

## Base strip - MSTBVA 2,5/20-G - 1755684

### Accessories

Marker card - SK 5/3,8:FORTL.ZAHLEN - 0804183



Marker card, Card, white, labeled, Horizontal: Consecutive numbers 1 - 10, 11 - 20, etc. up to 91 - (99)100, Mounting type: Adhesive, for terminal block width: 5 mm, Lettering field: 5 x 3.8 mm

---

### Additional products

Printed-circuit board connector - MSTB 2,5/20-ST - 1754805



Plug component, Nominal current: 12 A, Rated voltage (III/2): 320 V, Number of positions: 20, Pitch: 5 mm, Connection method: Screw connection with tension sleeve, Color: green, Contact surface: Tin

---

Printed-circuit board connector - MSTBP 2,5/20-ST - 1765959



Plug component, Nominal current: 12 A, Rated voltage (III/2): 320 V, Number of positions: 20, Pitch: 5 mm, Connection method: Screw connection with tension sleeve, Color: green, Contact surface: Tin

---

Printed-circuit board connector - SMSTB 2,5/20-ST - 1768930



Plug component, Nominal current: 12 A, Rated voltage (III/2): 320 V, Number of positions: 20, Pitch: 5 mm, Connection method: Screw connection with tension sleeve, Color: green, Contact surface: Tin

---

Printed-circuit board connector - FRONT-MSTB 2,5/20-ST - 1779592



Plug component, Nominal current: 12 A, Rated voltage (III/2): 320 V, Number of positions: 20, Pitch: 5 mm, Connection method: Front screw connection, Color: green, Contact surface: Tin

## Base strip - MSTBVA 2,5/20-G - 1755684

### Accessories

Printed-circuit board connector - MVSTBR 2,5/20-ST - 1792197



Plug component, Nominal current: 12 A, Rated voltage (III/2): 320 V, Number of positions: 20, Pitch: 5 mm, Connection method: Screw connection with tension sleeve, Color: green, Contact surface: Tin

Printed-circuit board connector - MVSTBW 2,5/20-ST - 1792702



Plug component, Nominal current: 12 A, Rated voltage (III/2): 320 V, Number of positions: 20, Pitch: 5 mm, Connection method: Screw connection with tension sleeve, Color: green, Contact surface: Tin

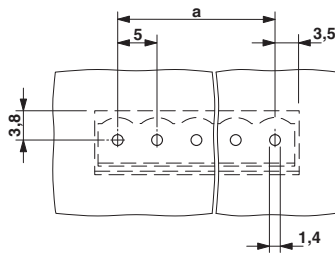
Printed-circuit board connector - FKCT 2,5/20-ST - 1909391



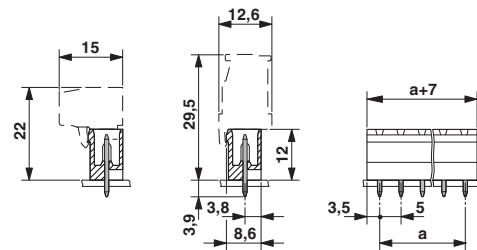
Plug component, Nominal current: 12 A, Rated voltage (III/2): 320 V, Number of positions: 20, Pitch: 5 mm, Connection method: Push-in spring connection, Color: green, Contact surface: Tin

### Drawings

Drilling diagram



Dimensional drawing



# Mouser Electronics

Authorized Distributor

Click to View Pricing, Inventory, Delivery & Lifecycle Information:

[Phoenix Contact:](#)

[1755684](#)