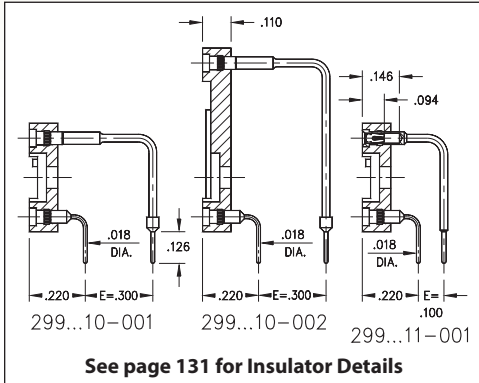
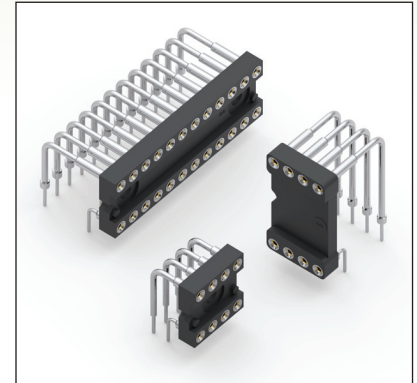


DUAL-IN-LINE SOCKETS

SERIES 299 • RIGHT ANGLE MOUNT • CLOSED FRAME



- Ideal for mounting components, such as LED displays, where the face must be parallel to the PCB surface
- Sockets have solder tail termination and are available with either .300" (standard) or .100" row spacing
- Series 299 uses MM #1103/0903, #1103/1610 or #1103/0904 pins. See pages 166 & 167 for details
- Hi-Rel, 4-finger BeCu #30 contact is rated at 3 amps. See page 253 for details
- Insulators are high temperature thermoplastic, suitable for all soldering operations
- For Electrical, Mechanical and Environmental Data, see page 264 for details



Total number of pins				Quantity per tube	ORDERING INFORMATION	
	A	B	C		E = .100	E = .300
6	0.3	0.3	0.4		299-XX-306-11-001000	* 299-XX-306-10-001000
8	0.4	0.3	0.4		299-XX-308-11-001000	* 299-XX-308-10-001000
10	0.5	0.3	0.4		299-XX-310-11-001000	* 299-XX-310-10-001000
12	0.6	0.3	0.4	33	299-XX-312-11-001000	* 299-XX-312-10-001000
14	0.7	0.3	0.4	29	299-XX-314-11-001000	* 299-XX-314-10-001000
16	0.8	0.3	0.4	25	299-XX-316-11-001000	* 299-XX-316-10-001000
18	0.9	0.3	0.4	22	299-XX-318-11-001000	* 299-XX-318-10-001000
20	1.0	0.3	0.4	20	299-XX-320-11-001000	* 299-XX-320-10-001000
24	1.2	0.3	0.4	16	299-XX-324-11-001000	* 299-XX-324-10-001000
8	0.4	0.6	0.7	50		299-XX-608-10-002000
10	0.5	0.6	0.7	40		299-XX-610-10-002000
12	0.6	0.6	0.7	34		299-XX-612-10-002000
14	0.7	0.6	0.7	28		299-XX-614-10-002000
16	0.8	0.6	0.7	25		299-XX-616-10-002000
18	0.9	0.6	0.7	22		299-XX-618-10-002000
20	1.0	0.6	0.7	20		299-XX-620-10-002000
22	1.1	0.6	0.7	18		299-XX-622-10-002000
24	1.2	0.6	0.7	16		299-XX-624-10-002000
26	1.3	0.6	0.7	15		299-XX-626-10-002000
28	1.4	0.6	0.7	14		299-XX-628-10-002000
30	1.5	0.6	0.7	13		299-XX-630-10-002000
32	1.6	0.6	0.7	12		299-XX-632-10-002000
36	1.8	0.6	0.7	11		299-XX-636-10-002000
40	2.0	0.6	0.7	10		299-XX-640-10-002000
SPECIFY PLATING CODE XX =					93	43
Sleeve (Pin)					200 μ" Sn/Pb	200 μ" Sn
Contact (Clip)					30 μ" Au	30 μ" Au



XX=Plating Code
See Below

* Not available in tubes



Mouser Electronics

Authorized Distributor

Click to View Pricing, Inventory, Delivery & Lifecycle Information:

Mill-Max:

[299-93-622-10-002000](#) [299-43-312-11-001000](#) [299-43-640-10-002000](#) [299-43-636-10-002000](#) [299-43-632-10-002000](#) [299-43-630-10-002000](#) [299-43-628-10-002000](#) [299-43-626-10-002000](#) [299-43-624-10-002000](#) [299-43-622-10-002000](#) [299-43-620-10-002000](#) [299-43-618-10-002000](#) [299-43-616-10-002000](#) [299-43-614-10-002000](#) [299-43-612-10-002000](#) [299-43-610-10-002000](#) [299-43-608-10-002000](#) [299-43-324-11-001000](#) [299-43-324-10-001000](#) [299-43-320-11-001000](#) [299-43-320-10-001000](#) [299-43-318-11-001000](#) [299-43-318-10-001000](#) [299-43-316-11-001000](#) [299-43-316-10-001000](#) [299-43-314-11-001000](#) [299-43-314-10-001000](#) [299-43-312-10-001000](#) [299-43-310-11-001000](#) [299-43-310-10-001000](#) [299-43-308-11-001000](#) [299-43-308-10-001000](#) [299-43-306-11-001000](#) [299-43-306-10-001000](#) [299-93-310-10-001000](#) [299-93-310-11-001000](#) [299-93-632-10-002000](#) [299-93-618-10-002000](#) [299-93-610-10-002000](#) [299-93-628-10-002000](#) [299-93-626-10-002000](#) [299-93-318-11-001000](#) [299-93-318-10-001000](#) [299-93-308-10-001000](#) [299-93-308-11-001000](#) [299-93-316-11-001000](#) [299-93-316-10-001000](#) [299-93-306-10-001000](#) [299-93-306-11-001000](#) [299-93-312-10-001000](#) [299-93-312-11-001000](#) [299-93-612-10-002000](#) [299-93-614-10-002000](#) [299-93-630-10-002000](#) [299-93-636-10-002000](#) [299-93-320-11-001000](#) [299-93-320-10-001000](#) [299-93-640-10-002000](#) [299-93-620-10-002000](#) [299-93-314-10-001000](#) [299-93-314-11-001000](#) [299-93-324-11-001000](#) [299-93-324-10-001000](#) [299-93-624-10-002000](#) [299-93-608-10-002000](#) [299-93-616-10-002000](#)