

1

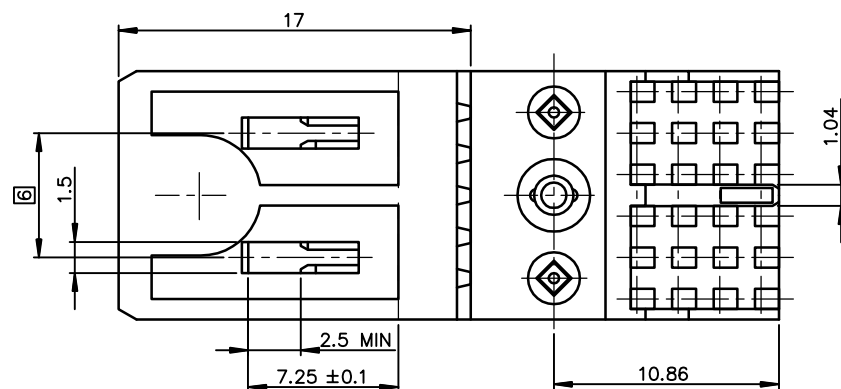
2

3

4

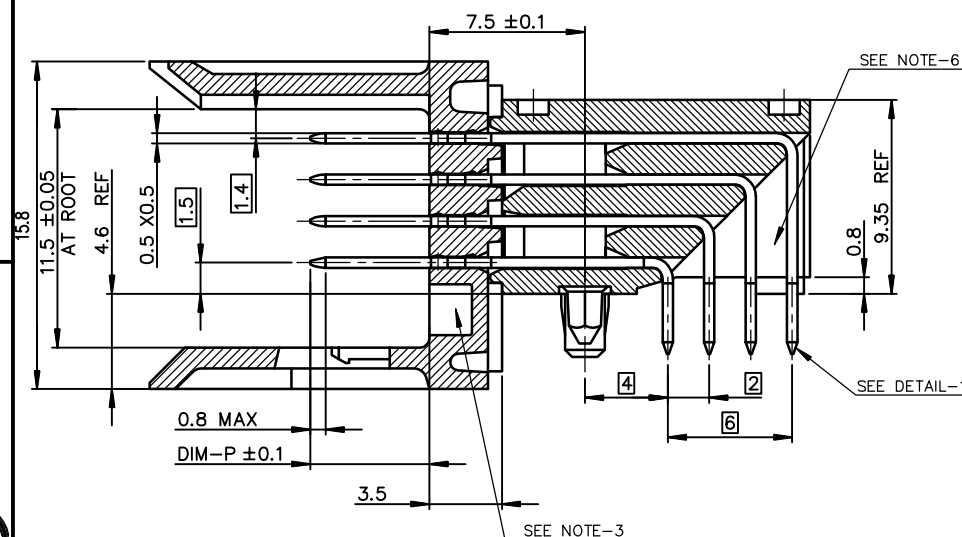
A

A



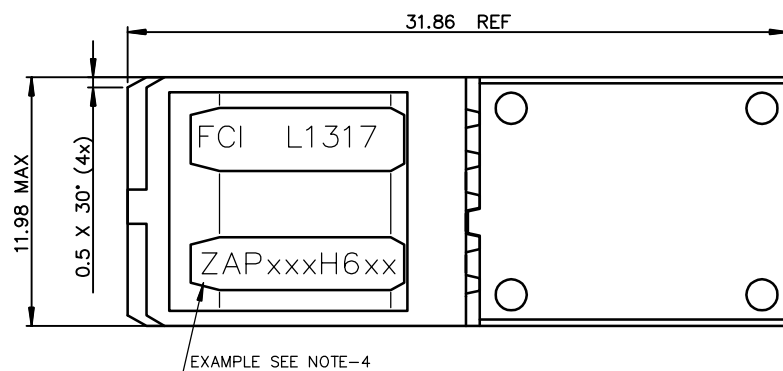
B

B



C

C



D

D

NORMINATIVE REF = IEC-61076-4-104

NOTE-2: ONE CENTER PEG FOR HOLD DOWN FORCE

NOTE-3: CODING RECESS FOR 8MM EXTENDED KEYS

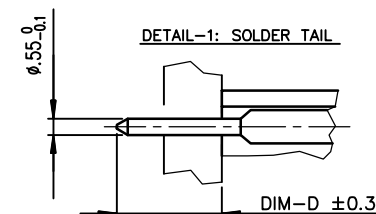
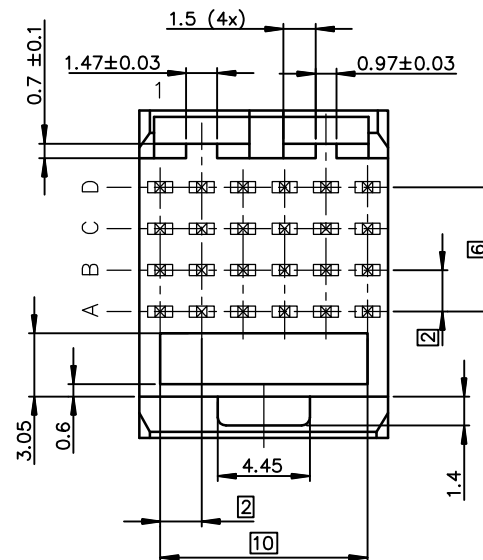
NOTE-4: PRODUCT MARKING = PRODUCT NUMBER + BATCH CODE + FCI  
FOR 1 MODULE SIZE, END OF PART NUMBER ONLY

NOTE-5: CENTRAL WALL WITH END REAR SUPPORT

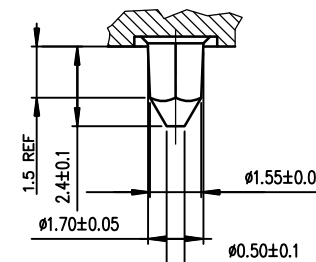
NOTE-6: PACKAGING IN TRAY + COVER

IF SUFFIX "P" IS ADDED IN P/N PACKAGING IS IN TRAYS  
BUT CONNECTOR MARKING IS WITHOUT "P"

EXAMPLE: HM1XXXXXXXXXH6P, MARKED HM1XXXXXXXXXH6



DETAIL OF LOCATING PEGS (2x) SCALE 8/1






GENERAL CHARACTERISTICS AND ROHS INFORMATIONS:

SEE PRODUCT SPECIFICATION GS-12-446

OTHERS INFORMATIONS, SEE DRW C-8626-11210-2

European Views

rev	ecn no	dr	date
C	-	CHA	2003/03/18
D	LS06-0089	LGO	2006/06/06
E	LS07-0184	MLE	2007/07/27
F	DG-13365	QinDF	2012/10/07
-	-	-	-
-	-	-	-

www.fciconnect.com			surface ISO 1302		tolerance std ISO 406 ISO 1101		projection 		mm 	
			TOLERANCES UNLESS OTHERWISE SPECIFIED							
Dr	CHAMPION	18/03/03	ANGULAR	LINEAR	0.X	±0.1	size	A3		
Eng	LENOIR	18/03/03			0.XX	±0.1	Scale			
Chr	LEGARE	18/03/03			0.XXX	±0.1	4: 1			
Appr	LEGARE	18/03/03	0.XX' ±2				ECN		LS07-0184	
			Product family				METRAL		Spec ref -	
			title METRAL RA HEADER WB CONV				dwg no C-8626-11210-1		Rev F	
			4x6 CTS -STB- PUSH PEG				CUSTOMER		sheet 1 of 2	
			cataloga no -							

REV F - 2006-04-17

1

2

3

4

PDS: Rev: F

STATUS: Released

Printed: Nov 06, 2012



Copyright FCI



# Mouser Electronics

Authorized Distributor

Click to View Pricing, Inventory, Delivery & Lifecycle Information:

[FCI / Amphenol:](#)

[HM1L41ZAP240H6PLF](#)