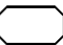
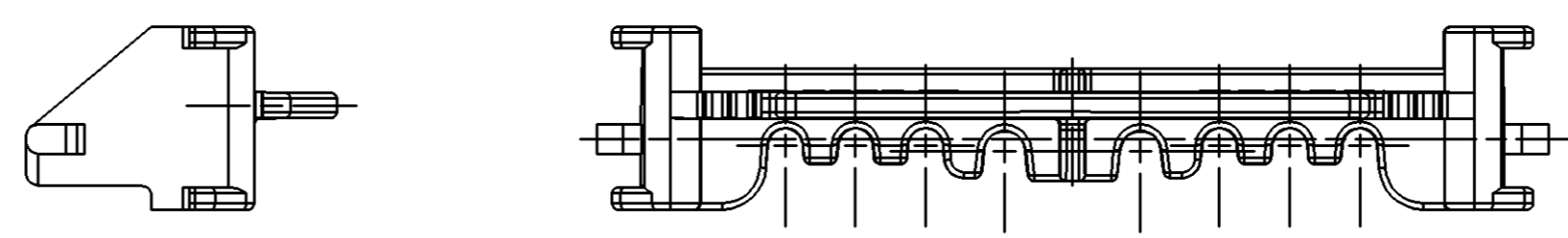
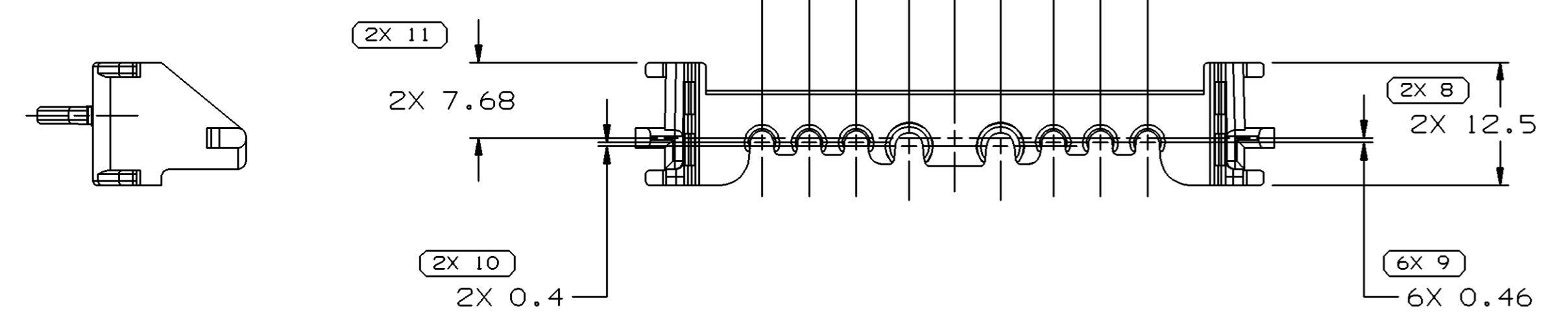
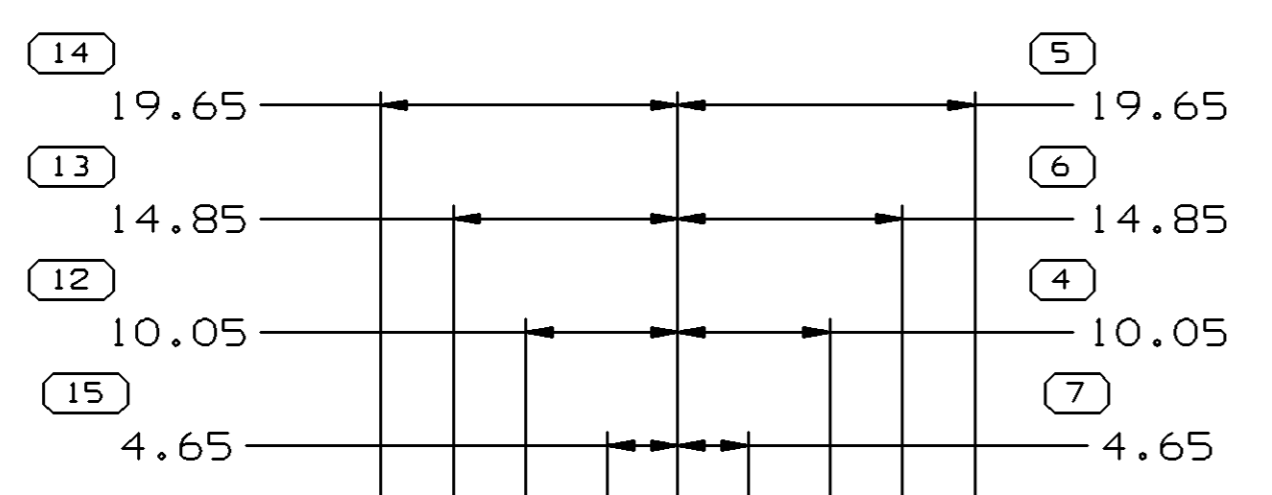
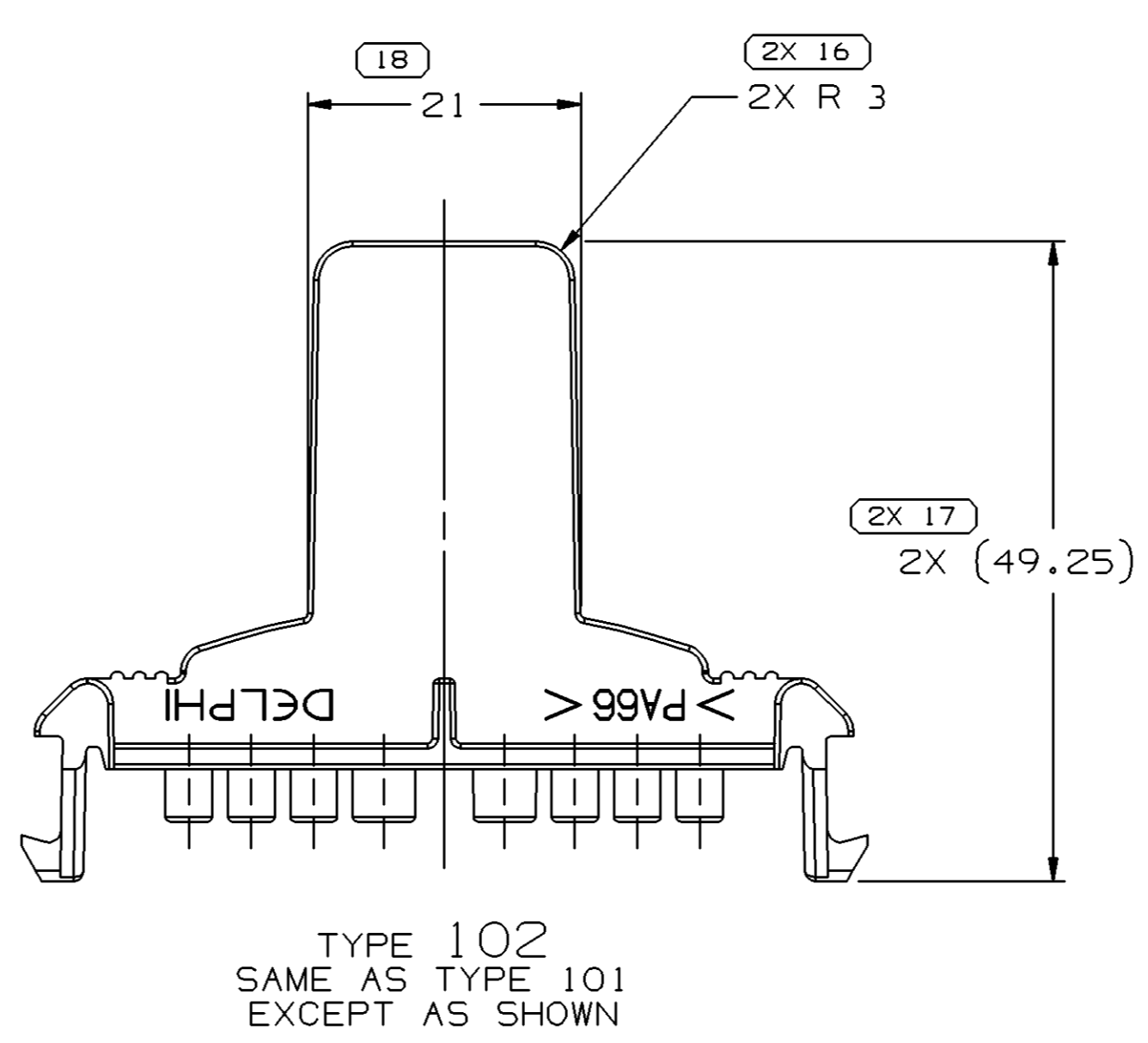
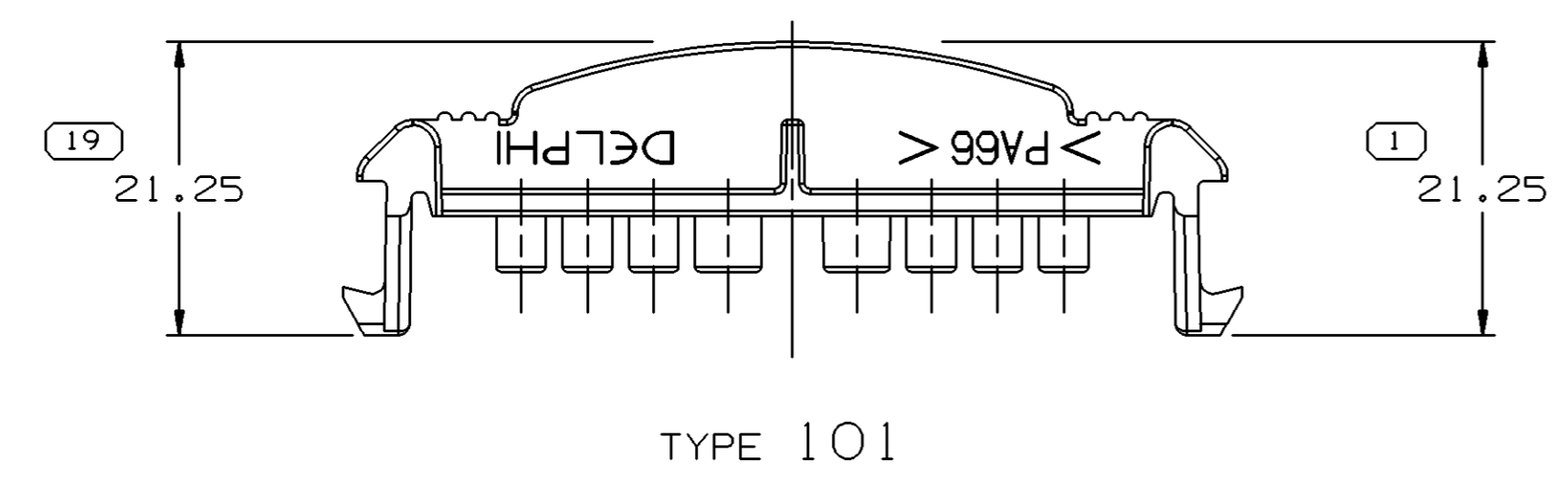


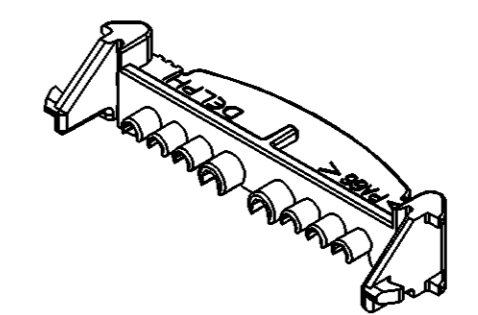
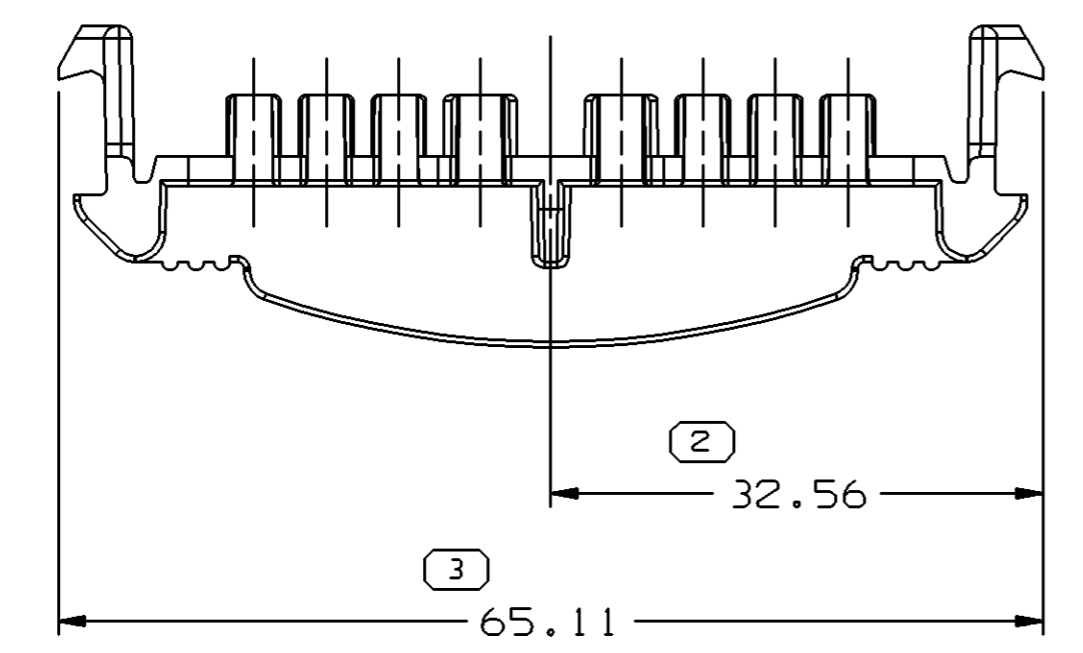
| SYMBOL DEFINITION   |                                  |
|---|----------------------------------|
| A DIMENSION WITHOUT AN INSPECTION REPORT SYMBOL  DOES NOT REQUIRE INSPECTION. IT MAY BE CONTROLLED ON THE INDIVIDUAL COMPONENT DRAWING. | TOTAL NO OF INSPECTIONS REQUIRED |
|   | 29                               |
|   | LAST NO. USED                    |
|   | 19                               |

| MISSING SYMBOLS          |  | DWG STATUS |     |     |     |     | ZONE  | REVISION HISTORY | AUTH | DR  | APVD1 | APVD2 |
|--------------------------|--|------------|-----|-----|-----|-----|---|------------------|------|-----|-------|-------|
| NO MISSING SYMBOL NUMBER |  | DATE       | STG | REV | N/P | CHG |   |                  |      |     |       |       |
|                          |  | 28MR01     | R   | 001 | -   | -   | 15355358 WAS SEPERATE DRAWING, 15410208 RELEASED      | 208292           | CJC  | CJC | CAM   |       |
|                          |  | 300C01     | R   | 002 | -   | -   | ALL PARTS - MATERIAL WAS R0071790 PA66 HS IM BLU      | 216588           | CJC  | CJC | CAM   |       |
|                          |  | 29N001     | R   | 003 | -   | -   | UPDATED TOLERANCES                                    | 217960           | CJC  | CJC | CAM   |       |
|                          |  | 17SE03     | R   | 04  | -   | -   | ALL PARTS - REVISED NOTES AND MAT'L SPEC WAS R0071784 | 246025           | TLD  | TLD | MP    |       |

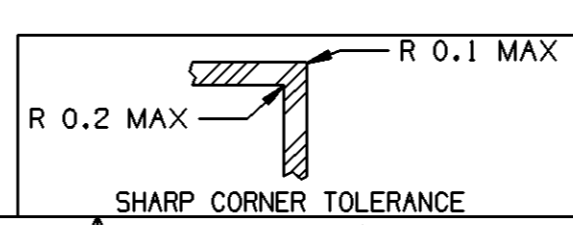


NOTES

- UNLESS OTHERWISE SPECIFIED AND/OR INDICATED: DIMENSIONS ARE TO FACE OF VIEW SHOWN AND AUTOMATICALLY ROUNDED BY COMPUTER FOR INSPECTION (SEE MATH MODEL FOR PRECISE DIMENSIONS). FOR ALL OTHER DIMENSIONS NOT SHOWN BUT REQUIRED FOR TOOL BUILD, SEE MATH MODEL FOR PRECISE TOOL PATH DATA.
- MATERIAL RECYCLING CODE PER ISO 11469. (2.3)X(0.1) RAISED CHARACTERS AS SHOWN TO BE LOCATED ON ANY EXTERIOR SURFACE. OPTIONAL CONSTRUCTION TO BE NO MATERIAL RECYCLING CODE.
- MATING COMPONENTS OR EQUIVALENT: CONNECTOR 15336173
- (2.3)X(0.1) RAISED DELPHI CORPORATE BRAND TO BE LOCATED ON ANY EXTERIOR SURFACE, PREFERABLY VISIBLE AT FINAL ASSEMBLY. OPTIONAL CONSTRUCTION TO BE "PED" OR NO LOGO.
- TPA IS DESIGNED FOR USE WITH 2-RIB CABLE SEALS AS SHOWN ON 12191227.
- THIS PART DOES NOT FALL IN TO THE CATEGORY OF AN APPEARANCE ITEM. MINOR SURFACE IMPERFECTIONS SUCH AS FLOW LINES, EJECTOR PIN MARKS, KNIT LINES, WELD MARKS AND GATE MARKINGS ARE PERMITTED.



| 15410208 | R   | 002 | AB  | 102    | M3592025 PA66 HS IM GRA MED | 3.271                            |                     |
|----------|-----|-----|-----|--------|-----------------------------|----------------------------------|---------------------|
| 15355358 | R   | 003 | AC  | 101    | M3592025 PA66 HS IM GRA MED | 2.440                            |                     |
| PART NO  | STG | REV | N/P | STATUS | TYPE                        | MATERIAL SPECIFICATION AND COLOR | VOV CM <sup>3</sup> |



| DIMENSIONAL RANGE (MM) |       | TOLERANCE UNLESS OTHERWISE SPECIFIED |     |
|------------------------|-------|--------------------------------------|-----|
| FROM                   | TO    | ±                                    | °   |
| > 0                    | > 20  | 0.15                                 | 0.2 |
| > 20                   | > 30  | 0.3                                  | 0.4 |
| > 30                   | > 70  | 0.4                                  | 0.5 |
| > 70                   | > 100 | 0.5                                  | 0.6 |
| > 100                  | > 150 | 0.6                                  | 0.8 |
| > 150                  | > 200 | 0.8                                  | 1.0 |
| > 200                  | > 250 | 1.0                                  | 1.2 |
| > 250                  | > 300 | 1.2                                  | 1.5 |
| > 300                  | > 400 | 1.5                                  | 2.0 |

|  |                 |
|--|-----------------|
| DWG TYPE<br>PART DRAWING   |                 |
| STYLE  |                 |
| VOLUME (CM <sup>3</sup> )<br>SEE CHART   | DISTR CODE<br>D |
| ROUTING<br>6900  |                 |
| UNLESS OTHERWISE SPECIFIED<br>THIS DOCUMENT IS IN ACCORDANCE WITH ASME Y14.5M-1994 AS AMENDED BY THE GM GLOBAL DIMENSIONING AND TOLERANCING ADDENDUM-2001. SEPARATE PATTERNS OF FEATURES MAY BE GAGED SEPARATELY REGARDLESS OF DATUM REFERENCES. |                 |
| ALL DIMENSIONS ARE IN MILLIMETERS  |                 |
| REFERENCE  |                 |
| THIRD ANGLE PROJECTION   | DO NOT SCALE    |
| USE MATH DATA  | UNIGRAPHICS     |

**DELPHI**  
DELPHI PACKARD ELECTRIC SYSTEMS  
WARREN, OH

| DATE  |                 |
|-------|-----------------|
| DR    | CRAIG COGGINS   |
| APVD1 | CRAIG COGGINS   |
| APVD2 | CRAIG COGGINS   |
| APVD3 | COURTNEY MANSKY |
| APVD4 |                 |
| APVD5 |                 |

28MR01  
30MR01  
04APO1

SUBSTANCES OF CONCERN AND RECYCLED CONTENT PER DELPHI 10949001

MATERIAL SEE CHART

DRAWING NAME  
TAXI LOCK TPA GT 150 280 8 N/A

DRAWING NUMBER  
15410212

| SIZE | SCALE | FRAME NO | SHEET NO | STG | REV | N/P |
|------|-------|----------|----------|-----|-----|-----|
| A1   | 2:1   | 1 OF 1   | 1 OF 1   | R   | 04  | -   |

# Mouser Electronics

Authorized Distributor

Click to View Pricing, Inventory, Delivery & Lifecycle Information:

[Aptiv:](#)

[15355358](#)