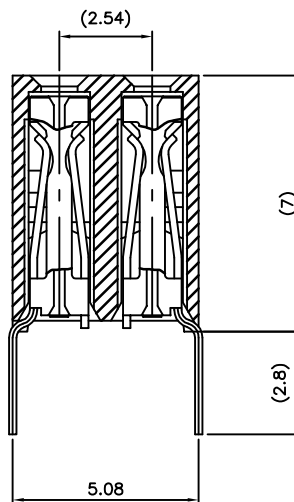
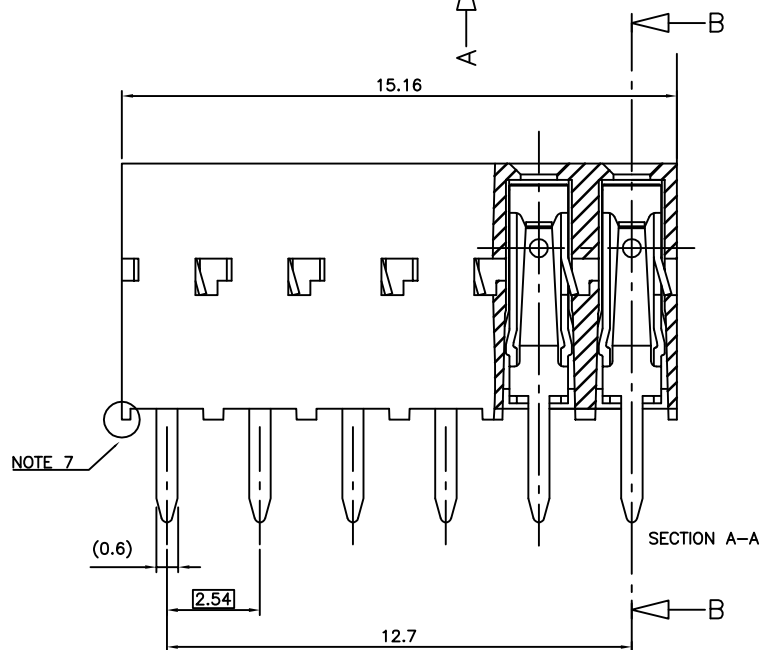
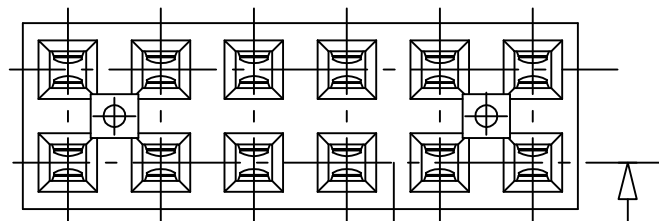
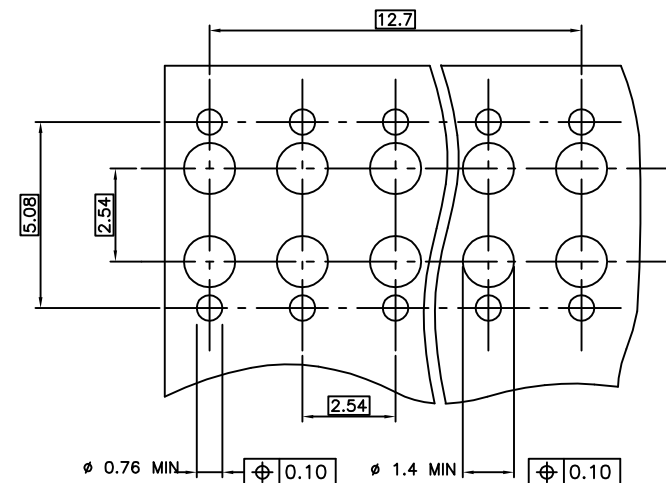


PRODUCT N°
10079008-Y06(H)LF

NOTE 4 RoHS COMPATIBLE, SEE NOTE 6



SECTION B-B





RECOMMENDED PC BOARD THICKNESS: 1.6 ±0.2

NOTES:

- 1 - MATERIAL HOUSING: THERMOPLASTIC POLYESTER 30% GLASS FILLED, COLOUR BLUE. FLAME RETARDANT PER UL-94 CATEGORY V0.
- 2 - MATERIAL TERMINAL: PHOSPHOR BRONZE EXTRA HARD.
- 3 - MATERIAL HOUSING HIGH TEMPERATURE: PCT 30% GLASS FILLED COLOUR GREY. FLAME RETARDANT PER UL-94V0.
- 4 - THE DASH "H" AT THE END OF THE P/N TO INDICATE A HIGH TEMPERATURE HOUSING.
- 5 - CONNECTOR MEANT TO BE USED FOR PC BOARD WITH NONE PLATED THROUGH HOLES.
- 6 - RoHS COMPATIBLE PRODUCT SPECIFICATIONS
 - a - PLATING:
 - "LF" MEANS THE PRODUCT IS LEAD-FREE, 2µm MINIMUM MATTE TIN OVER 1.27µm MINIMUM NICKEL UNDERPLATE.
 - b - MANUFACTURING PROCESS COMPATIBILITY
 - THE HOUSING WILL WITHSTAND EXPOSURE TO 260°C ±5°C SOLDER BATH TEMPERATURE FOR 5 SECONDS IN A WAVE SOLDER APPLICATION WITH A 1.6mm MIN THICK CIRCUIT BOARD.
 - c - LABELING:
 - MEETS PACKAGING SPECS AS PER GS-14-920
 - d - LEGAL STATEMENT: SEE GS-47-0004
- 7 - END STAND-OFFS FOR 2x2 UP TO 2x4 POS
NO END STAND-OFFS FOR 2x5 UP TO 2x50 POS

10079008-406(H)LF	5µm Sn	Sn
10079008-306(H)LF	0.76µm GOLD	Sn
PLATING CODE	CONTACT AREA	SOLDER TAIL
	PLATING THICKNESS OVER 1.27µm Ni	

mat'l. code				surface		tolerance		projection		product family	
SEE NOTES				ISO 1302	ISO 406	ISO 101			DX VCC DR		
lir	con no	dr	date	tolerances unless otherwise specified				mm		title	
A	F07-0247	PNZ	07.08.16	angles	linear	±0.3		mm		DUAL ENTRY	
B	F07-027	LMU	07.12.06	±2°		scale 10:1		mm		OFF SET LEGS 5.08mm	
C	F11-0043	JCO	11.03.30	±2°		scale 10:1		mm		dwg no	
D	B-19115	LMU	14.10.21	dr	D	LEGRAND	07.05.10			sheet 1 of 1	
E	F-24430	AMA	16.07.01	engr	P	NIZZI	07.05.10			10079008	
				chr	P	NIZZI	07.05.10			A2	
				appe	P	NZ	07.05.10			type	
sheet	revision	sheet								CUSTOMER Drawing	
index											

Mouser Electronics

Authorized Distributor

Click to View Pricing, Inventory, Delivery & Lifecycle Information:

[FCI / Amphenol:](#)

[10079008-306LF](#)