

4

3

2

1

THIS DRAWING IS UNPUBLISHED.

RELEASED FOR PUBLICATION

© COPYRIGHT

ALL RIGHTS RESERVED.

LOC

DIST


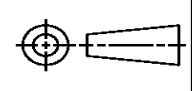
REVISIONS

P	LTR	DESCRIPTION	DATE	DWN	APVD
	A1	ECR-14-003325	11MAR2014	GK	HMR

REPLACED BY OCEAN STYLE APPLICATOR PART
NUMBER 2266084-2

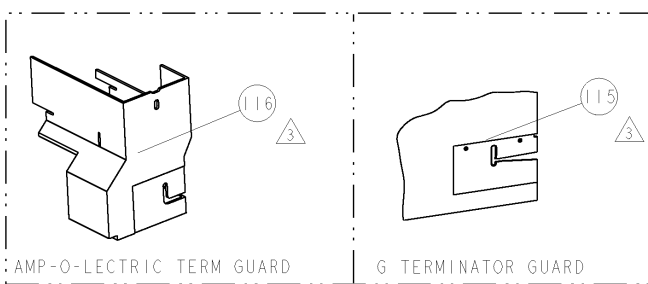
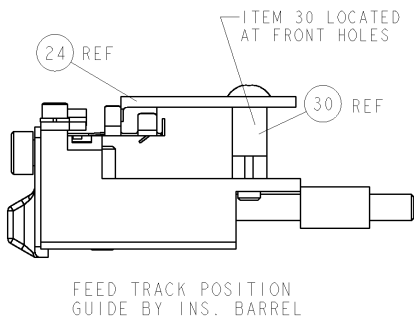
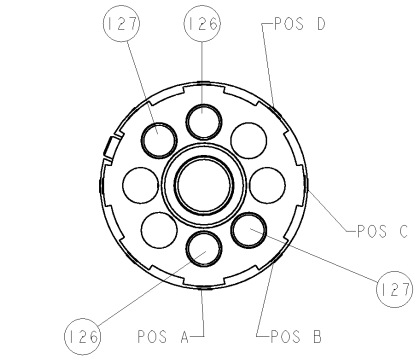
FOR REPLACEMENT PARTS FOR APPLICATOR 1852790
REFER TO ADDITIONAL PAGE(S). SPARE PARTS KIT (IF LISTED)
WILL REMAIN AVAILABLE.

THE REPLACEMENT OCEAN STYLE APPLICATOR HAS THE
SAME TERMINATOR/PRESS INTERFACE AS APPLICATOR
1852790

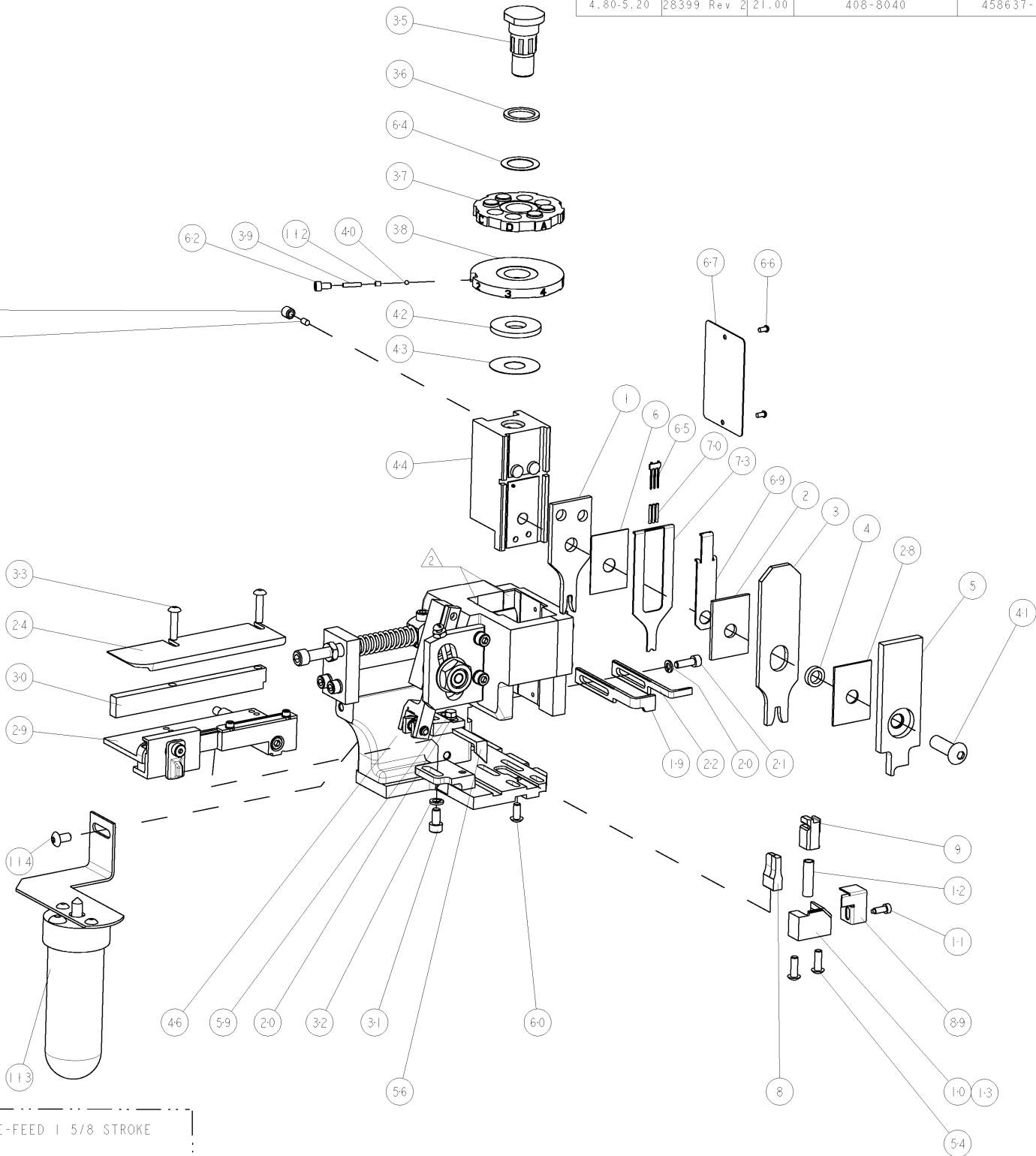
THIS DRAWING IS A CONTROLLED DOCUMENT.		DWN	GOPALAKRISHNA HV		 TE Connectivity		
DIMENSIONS:		CHK	RAGHAVENDRA				
		TOLERANCES UNLESS OTHERWISE SPECIFIED:		NAME			
		0 PLC ±		SIDE FEED HDM APPLICATOR			
		1 PLC ±					
2 PLC ±		APVD		RAGHAVENDRA			
3 PLC ±		PRODUCT SPEC					
4 PLC ±		APPLICATION SPEC					
ANGLES ±		WEIGHT		SIZE	CAGE CODE	DRAWING NO	RESTRICTED TO
FINISH		CUSTOMER DRAWING		A3		©- 1852790	
MATERIAL		SCALE		SHEET 1 OF 2		REV A1	

8				7			
THIS DRAWING IS UNPUBLISHED.				RELEASED FOR PUBLICATION			
20				20			
© COPYRIGHT 20 BY TYCO ELECTRONICS CORPORATION. ALL RIGHTS RESERVED.							
PART NUMBER	REV	FIRST USED	POWER UNIT	FEED TYPE	DESCRIPTION		
1852790-1	A	122500-1	LEADMAKER	POST FEED	CUTS CARRIER		
1852790-2	A	565435-5	BENCH MODEL K	PRE FEED	CUTS CARRIER		
1852790-3	A	354500-1	BENCH MODEL G	PRE FEED	CUTS CARRIER		
1852790-6	A	122500-1	LEADMAKER	POST FEED	CONTINUOUS CARRIER		
7-1852790-7	A	-	-	-	SPARE PARTS		

- 1 RECOMMENDED SPARE PARTS
2 GREASE LIGHTLY
3 GUARD MUST BE IN PLACE WHEN OPERATING APPLICATOR IN A BENCH MACHINE



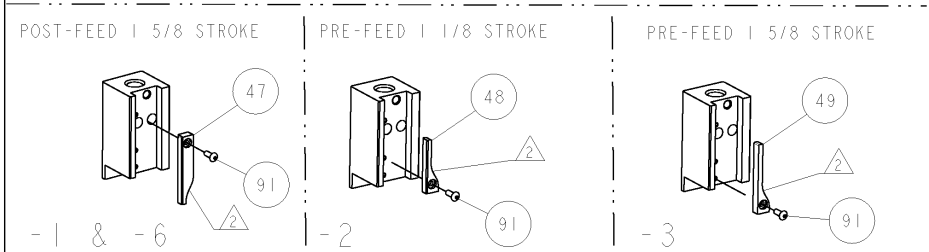
TERMINAL NAME: RECEPTACLE, ANGLED 6.3 X 0.8					
TE PN	LEAR	LEAR TERMINAL - LEAR CRIMP SPECS			
1949847	28399 213 011	PAD LTR	CRIMP HEIGHT		WIRE SIZE
-	-	A	1.70mm±.05/- .05[.067±.002/- .002]		2.5mm2
-	-	B	1.50mm±.05/- .05[.059±.002/- .002]		1.5mm2
-	-	C			-
-	-	D			-
		CRIMP	SIZE	TYPE	RANGE
-	-	WIRE	2.84mm [1.12]	F	1.5-2.5mm2
-	-	INSUL	3.80mm [1.50]	F	Ø2.200 - 3.700
WIRE STRIP LENGTH 4.80-5.20	TERM APPL SPEC 28399 Rev 2	FEED 21.00	APPLICATOR INSTRUCTIONS 408-8040		SET UP GAGE 458637-1



LOC		DIST		REVISIONS			
A	66	P	LTR	DESCRIPTION	DATE	DWN	APVD
		A		RELEASED	20FEB2009	AK	GB

-	2	2	2	2	-	1-354779-6	PIN, WIRE DISC, .3070	127
-	2	2	2	2	-	9-354778-7	PIN, WIRE DISC, .2980	126
-	-	-	REF	-	..	455749-1	GUARD WINDOW	116
-	-	REF	-	-	..	679532-1	INSERT, GUARD	115
-	-	-	1	-	-	2-21002-6	SCR, BTN SKT HD CAP 10-32 X .375	114
-	-	-	1	-	..	1-465184-0	LUBRICATOR ASSY	113
-	1	1	1	1	-	690603-1	SPRING ASSIST AMP-O-MATOR APPLICATOR	112
-	1	1	1	1	-	1-21002-7	SCR, BTN SKT HD CAP 6-32 X .375	91
-	1	1	1	1	-	318563-1	GUARD, FRONT CHIP	89
-	1	1	1	1	-	1490525-1	DEPRESSOR, WIRE	73
-	1	1	1	1	-	4088040	SF APPL INST 408-8040	72
-	1	1	1	1	-	217238-1	GENERAL INSTRUCTION PKG	71
-	3	3	3	3	-	2-23147-2	SPRING, COMPRESSION	70
-	1	1	1	1	-	1490524-2	DEPRESSOR, SPACER	69
-	1	1	1	1	-	461264-1	PLATE, IDENTIFICATION	67
-	2	2	2	2	-	21017-2	SCREW, DRIVE	66
-	1	1	1	1	-	1424350-1	HOLDER, PIN, WIRED	65
-	1	1	1	1	-	986950-1	WASHER, FLAT PRECISION	64
-	1	1	1	1	-	21009-2	SCR, SET, SELF LOCKING 1/4-20 X .250	63
-	1	1	1	1	-	23030-1	SCR, SKT HD CAP 6-32 X .25	62
-	1	1	1	1	-	22733-8	SCR, BHSC, SELF-LOCKING, 8-32 X .375	60
-	1	1	1	1	-	2-22603-0	SCR, HEX HD CAP 8-32 X .312	59
-	1	1	1	1	-	458537-2	PAWL, FEED	56
-	2	2	2	2	-	2-21002-2	SCR, BTN SKT HD CAP 8-32 X .500	54
-	-	1	-	-	..	690602-6	CAM, PRE FEED, 1 5/8	49
-	-	-	1	-	..	690602-5	CAM, PRE FEED, 1 1/8	48
-	1	-	-	1	-	690501-4	CAM, POST-FEED 1 5/8	47
-	1	1	1	1	-	459456-1	APPL. BASIC SUB ASSY (SIDE WISE MQCA)	46
-	1	1	1	1	-	690191-1	PLUG, NYLON	45
-	1	1	1	1	-	819307-4	RAM, SIDE FEED	44
-	1	1	1	1	-	690125-1	SHIM SUB-ASSY	43
-	1	1	1	1	-	690124-1	WASHER, RAM (.115)	42
-	1	1	1	1	-	7-21002-9	SCR, BTN SKT HD CAP 5/16-24 X 1.00	41
-	1	1	1	1	-	23241-6	BALL, STEEL	40
-	1	1	1	1	-	690170-1	SPRING, COMPRESSION	39
-	1	1	1	1	-	1-690142-1	DISC, INSULATION	38
-	1	1	1	1	-	354777-1	WIRE DISC, ASSEMBLY	37
-	1	1	1	1	-	22480-5	SPRING, COMPRESSION	36
-	1	1	1	1	-	690212-1	POST, RAM	35
-	2	2	2	2	-	2-21002-4	SCR, BTN SKT HD CAP 8-32 X .750	33
-	1	1	1	1	-	21024-5	WASHER, SPRG LOCK, REG NO 10	32
-	1	1	1	1	-	3-21000-4	SCR, SKT HD CAP 10-32 X .375	31
-	1	1	1	1	-	1320908-8	SPACER, STRIP GUIDE	30
-	1	1	1	1	-	1633091-3	ASSEMBLY, STRIP GUIDE	29
-	1	1	1	1	-	1-455888-0	SPACER, CRIMPER	28
-	1	1	1	1	-	1320928-1	PLATE, STRIP GUIDE	24
-	1	-	-	1	-	690472-2	STRIPPER	22
-	1	1	1	1	-	2-21000-7	SCR, SKT HD CAP 8-32 X .500	21
-	2	2	2	2	-	21024-4	WASHER, SPRG LOCK, REG NO 8	20
-	-	1	1	-	-	691353-1	STRIPPER	19
-	1	-	-	-	-	679625-1	SHEAR HOLDER, FRONT (NO CUT)	13
-	1	1	1	1	-	3-22280-3	SPRING, COMPRESSION	12
-	1	1	1	1	-	690461-1	STOP, SHEAR	11
-	-	1	1	1	-	690459-1	SHEAR HOLDER, FRONT	10
-	1	1	1	1	-	454276-1	FLOATING SHEAR, FRONT	9
1	1	1	1	1	-	2-1633665-5	ANVIL, COMBINATION	8
-	-	-	-	-	..	-	-	7
-	1	1	1	1	-	455888-4	SPACER, CRIMPER	6
-	1	1	1	1	-	1-455889-4	DEPRESSOR, SHEAR	5
-	1	1	1	1	-	238011-2	BLOCK, CRIMPER SPACER	4
1	1	1	1	1	-	1213077-5	CRIMPER, INSULATION PREMIUM	3
1	1	1	1	1	-	1-455888-8	SPACER, CRIMPER	2
1	1	1	1	1	-	1-1633664-2	CRIMPER, WIRE	1

-77 -6 -3 -2 -1 U/M		PART NO	DESCRIPTION	ITEM NO
1852790-1				
1852790-2				
1852790-3				
1852790-6				
7-1852790-7				
1852790-8				
1852790-9				
1852790-10				
1852790-11				
1852790-12				
1852790-13				
1852790-14				
1852790-15				
1852790-16				
1852790-17				
1852790-18				
1852790-19				
1852790-20				
1852790-21				
1852790-22				
1852790-23				
1852790-24				
1852790-25				
1852790-26				
1852790-27				
1852790-28				
1852790-29				
1852790-30				
1852790-31				
1852790-32				
1852790-33				
1852790-34				
1852790-35				
1852790-36				
1852790-37				
1852790-38				
1852790-39				
1852790-40				
1852790-41				
1852790-42				
1852790-43				
1852790-44				
1852790-45				
1852790-46				
1852790-47				
1852790-48				
1852790-49				
1852790-50				
1852790-51				
1852790-52				
1852790-53				
1852790-54				
1852790-55				
1852790-56				
1852790-57				
1852790-58				
1852790-59				
1852790-60				
1852790-61				
1852790-62				
1852790-63				
1852790-64				
1852790-65				
1852790-66				
1852790-67				
1852790-68				
1852790-69				
1852790-70				
1852790-71				
1852790-72				
1852790-73				
1852790-74				
1852790-75				
1852790-76				
1852790-77				



Mouser Electronics

Authorized Distributor

Click to View Pricing, Inventory, Delivery & Lifecycle Information:

[TE Connectivity:](#)

[1852790-3](#)