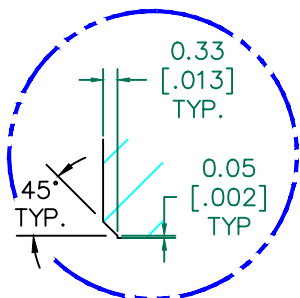
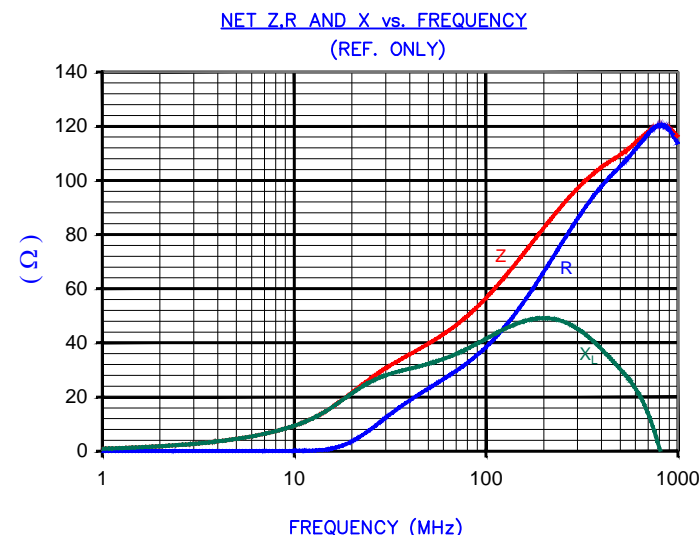


SECTION A-A
SEE DETAIL "A"



DETAIL "A"
CHAMFER
SCALE=6:1

NET IMPEDANCE (Z)			
Frequency	300 MHz	500 MHz	1 GHz
Nominal (REF)	97 Ω	110 Ω	115 Ω
Minimum	- Ω	88 Ω	- Ω



AGILENT E4991A Impedance/Material Analyzer
HP 16092A-Test Fixture

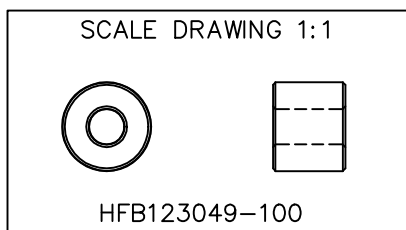
FERRITE CORE DIMENSIONS (SPEC) MM [Inches]:

A	12.32 [.485]	+	0.25 [.010]
B	4.88 [.192]	+	0.15 [.006]
C	10.00 [.394]	+	0.20 [.008]

WEIGHT/1000 4.94 kgs [10.88 Lbs]

NOTES: UNLESS OTHERWISE SPECIFIED

1. COSMETIC SPECIFICATION REFER TO WI-QA-038.



RoHS

UNCONTROLLED DOCUMENT

DIMENSIONS ARE IN mm [INCHES].				This print is the property of Laird Tech. and is loaned in confidence subject to return upon request and with the understanding that no copies shall be made without the written consent of Laird Tech. All rights to design or invention are reserved.		Laird	
				PROJECT/PART NUMBER:	REV	PART TYPE:	DRAWN BY:
				HFB123049-100	C	FERRITE CORE	TMB
C	UPDATE THE LOGO	05/13/15	QU	DATE: 08/19/02	SCALE: 3:1	MATERIAL:	HF
B	UPDATE FORMAT CHG CURVE & Z SPECS	04/04/03	TMB	CAD # HF123049-100-C	TOOL # B0485		
A	ORIGINAL DRAFT	08/19/02	TMB				
REV	DESCRIPTION	DATE	INT				

Mouser Electronics

Authorized Distributor

Click to View Pricing, Inventory, Delivery & Lifecycle Information:

Laird:

[HFB123049-100](#)