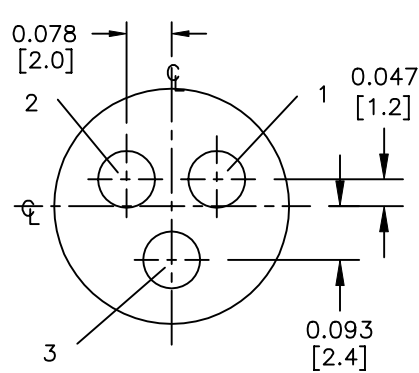
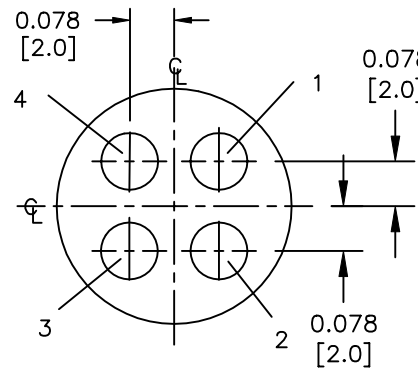


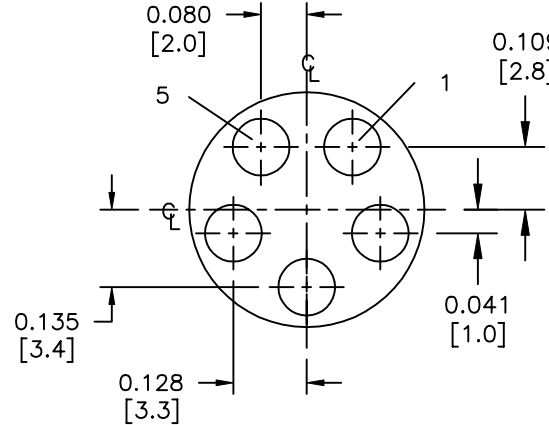
2-#16
PC TAIL DIA. 0.048 ±0.001 REF.



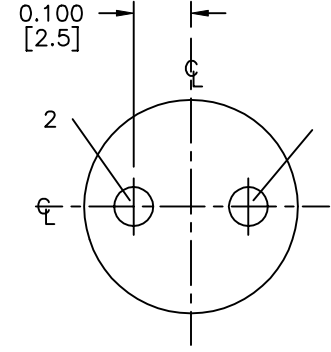
3-#16
PC TAIL DIA. 0.048 ±0.001 REF.



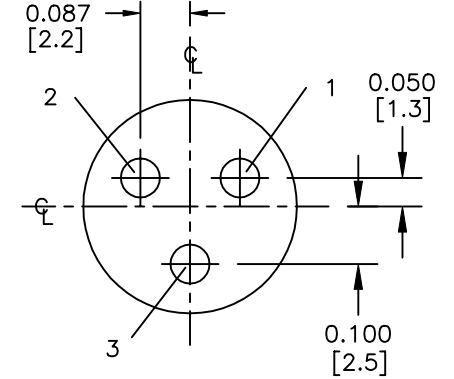
4-#16
PC TAIL DIA. 0.048 ±0.001 REF.



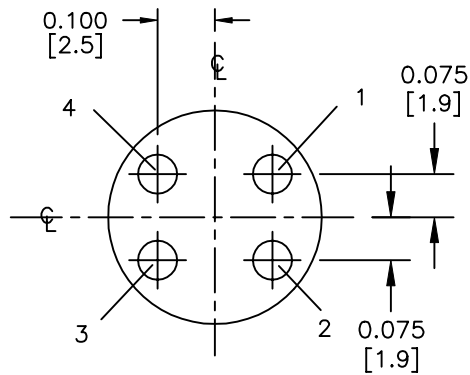
5-#16
PC TAIL DIA. 0.048 ±0.001 REF.



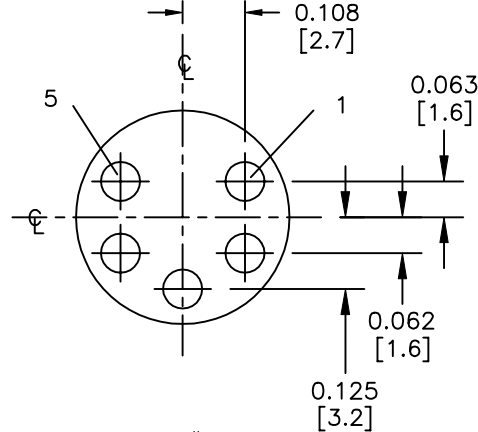
2-#20
PC TAIL DIA. 0.0395 ±0.001 REF.



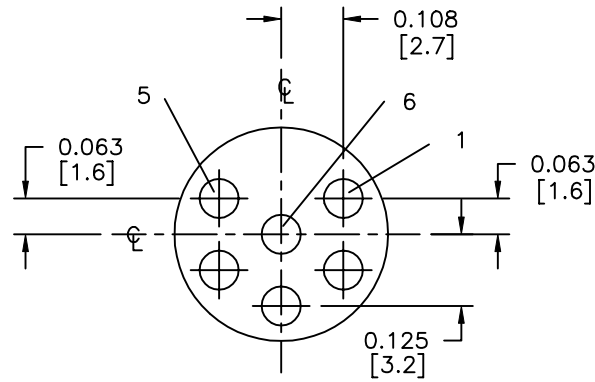
3-#20
PC TAIL DIA. 0.0395 ±0.001 REF.



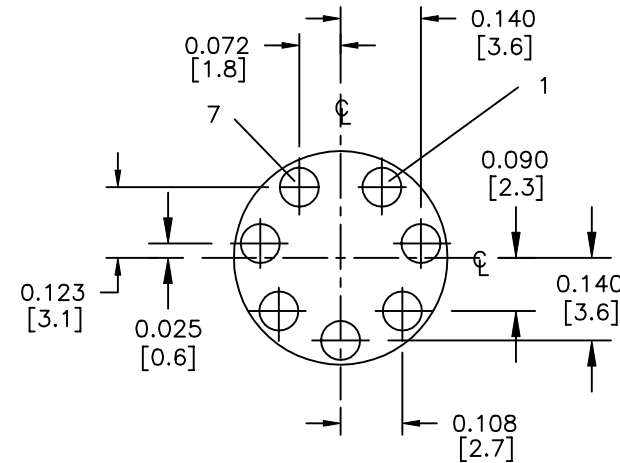
4-#20
PC TAIL DIA. 0.0395 ±0.001 REF.



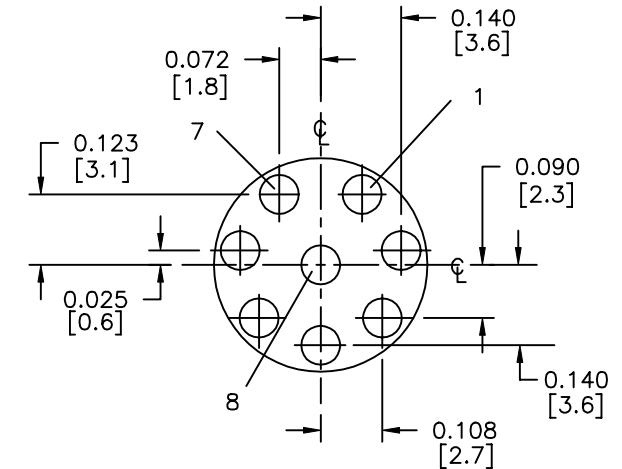
5-#20
PC TAIL DIA. 0.0395 ±0.001 REF.



6-#20
PC TAIL DIA. 0.0395 ±0.001 REF.



7-#20
PC TAIL DIA. 0.0395 ±0.001 REF.
PANEL PIN ONLY



8-#20
PC TAIL DIA. 0.0395 ±0.001 REF.
PANEL PIN ONLY

WIRE VIEWS

CUSTOMER APPROVAL

CHECKED BY: _____
APPROVED BY: _____
DATE: _____

C	AN	03-13-06	ADDED CUSTOMER PRINT PER DOR 04-E149JC AND ECR 6107		
REV.	INIT.	DATE	DESCRIPTION		
			ORIG. DRAWN BY: AL	DATE: 04-27-99	
ALL INFORMATION ILLUSTRATED IS THE PROPERTY OF "CONXALL CORPORATION." UNAUTHORIZED DUPLICATION OR DISTRIBUTION OF THIS DOCUMENT IS PROHIBITED.			CHECKED BY: _____		
ALL UNITS ARE IN FEET, INCHES, FRACTION OF INCHES AND DECIMALS.			APPROVED BY: _____		
UNLESS OTHERWISE SPECIFIED TOLERANCES:			SCALE	SIZE	SHEET
3 PLACE DECIMALS ±.005			3:1	B	1 OF 1
ANGLES ±1°			FILE:	DIRECTORY:	CUSTOMER:
FRACTIONS ±1/16			HPMISTDSH1	DETAILS	PART NUMBER: HPMISTD
▷ = CRITICAL CHARACTERISTIC FLAG PER SPEC. XXXX					REV. C

Mouser Electronics

Authorized Distributor

Click to View Pricing, Inventory, Delivery & Lifecycle Information:

Switchcraft:

[7281-7PG-300](#) [7291-7PG-300](#)