

MATERIALS AND FINISHES

BODY FRONT, CAP, JAM NUT BRASS
PLATED NICKEL

BODY REAR BRASS
PLATED TIN

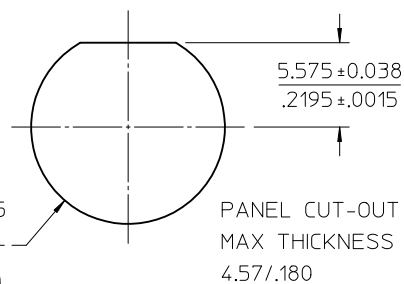
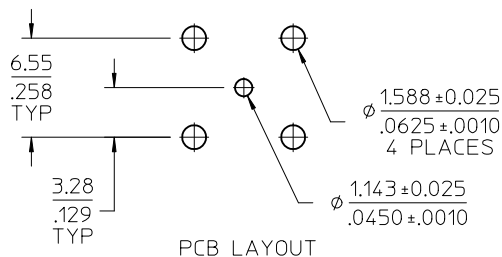
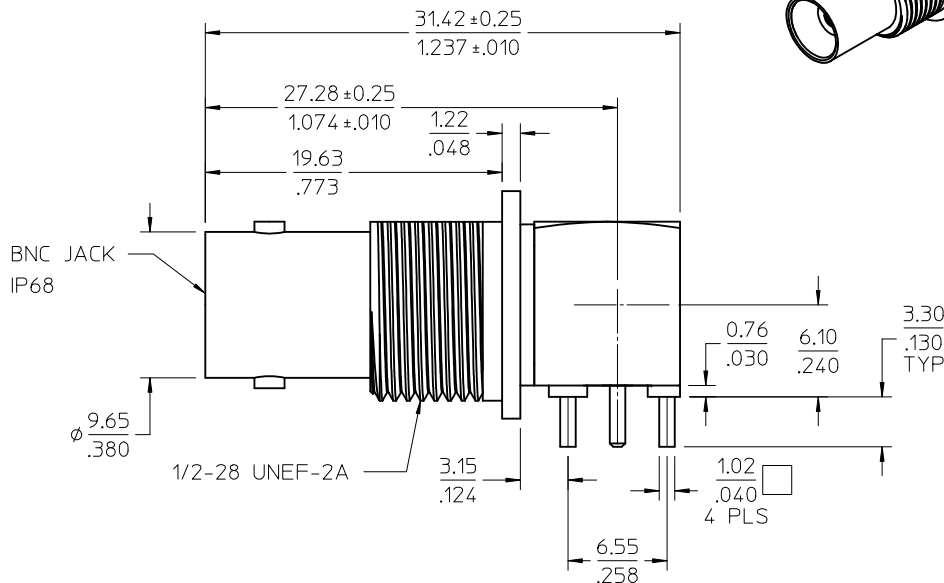
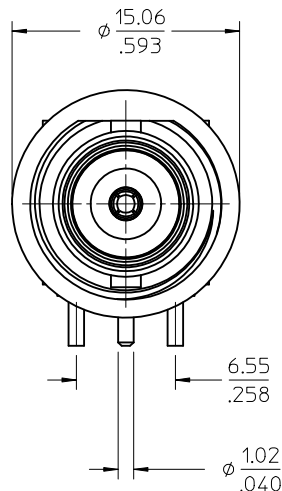
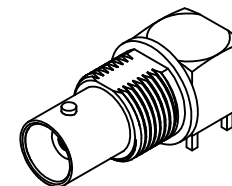
REAR CONTACT BRASS
PLATED GOLD

CENTER CONTACT BERYLLIUM COPPER
PLATED GOLD

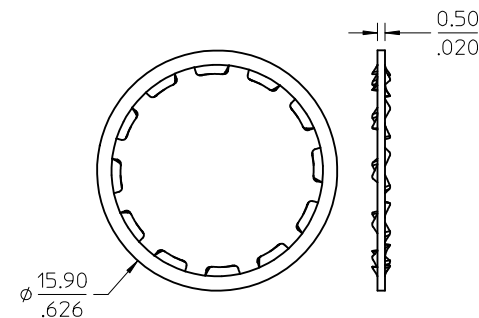
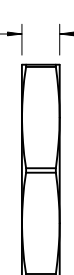
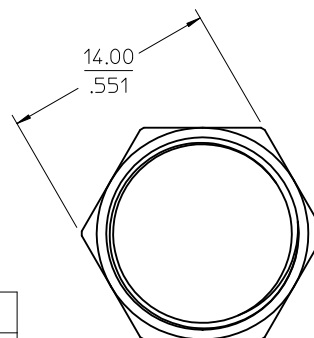
INSULATOR: TEFLON

LOCK WASHER: PHOSPHOR BRONZE
PLATED NICKEL

FOR SINGLE BAG PACKAGING
BAG TO INCLUDE CONNECTOR
ASSEMBLY, JAM NUT, LOCKWASHER



PANEL CUT-OUT
MAX THICKNESS
4.57/.180



MIL-STD-348A, FIG. 301-2	INTERFACE
SPECIFICATION	DESCRIPTION

73171-4201	TRAY
73171-4200	SINGLE BAG
PART NO.	PACKAGING

CHG: UPDATE
VIEWS
ADD IP68 NOTE
EC NO: URF2011-0290
DRWN: JWIENER 2010/11/17
CHKD: SSS 2010/11/17
APPR: JWIENER 2010/11/18
REV

QUALITY SYMBOLS
▽=0
▽=0

GENERAL TOLERANCES (UNLESS SPECIFIED)

	mm	INCH
4 PLACES	± .005	± .0002
3 PLACES	± .003	± .0001
2 PLACES	± .002	± .0001
1 PLACE	± .001	± .0001

ANGULAR ± 2 °

DRAFT WHERE APPLICABLE
MUST REMAIN
WITHIN DIMENSIONS

DIMENSION STYLE
MM/IN

DRAWN BY	DATE
SSHAH	2010/04/20
CHECKED BY	DATE
AROBERTSON	2010/04/20
APPROVED BY	DATE
JWIENER	2010/11/18

MATERIAL NO.
SEE TABLE

SIZE
C

SCALE
DESIGN UNITS
METRIC

THIRD ANGLE PROJECTION

TITLE
BNC J RA PCB BLKHD IP68
50 OHMS EWR-4359
BNC-J/PCB

MOLEX INCORPORATED

DOCUMENT NO.
SD-73171-420

SHEET NO.
1 OF 1

THIS DRAWING CONTAINS INFORMATION THAT IS PROPRIETARY TO MOLEX INCORPORATED AND SHOULD NOT BE USED WITHOUT WRITTEN PERMISSION

Mouser Electronics

Authorized Distributor

Click to View Pricing, Inventory, Delivery & Lifecycle Information:

Molex:

73171-4200