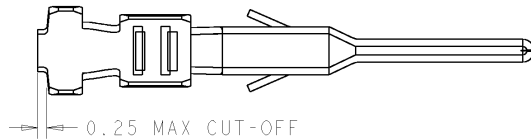


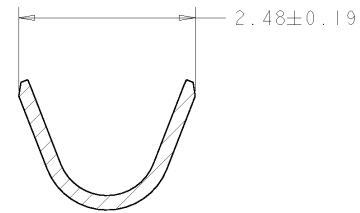
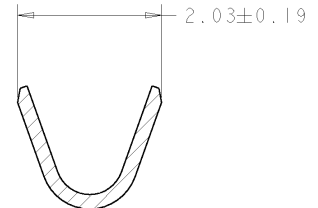
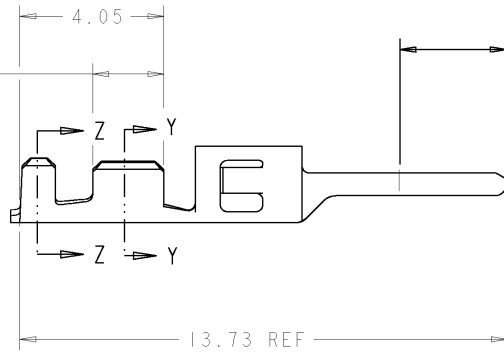
THIS DRAWING IS UNPUBLISHED. RELEASED FOR PUBLICATION
 BY TYCO ELECTRONICS CORPORATION. ALL RIGHTS RESERVED.

LOC	DIST	REVISIONS					
CM	00	P	LTN	DESCRIPTION	DATE	DWN	APVD
		A		REVISED PER 0G3B-0289-03	24-JUN-03	RW	CJ
		B		REVISED PER 0G3B-0519-03	24-JUN-03	RW	CJ

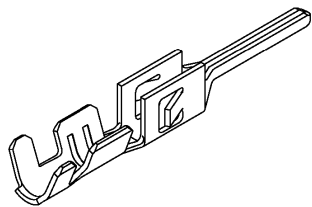


- △ 2.54 μm MIN BRIGHT TIN/LEAD ENTIRE STOCK OVER 1.27 μm MIN NICKEL ENTIRE STOCK.
- △ 0.38 μm MIN GOLD IN LOCALIZED GOLD PLATE AREA, 2.5 μm MIN BRIGHT TIN/LEAD IN LOCALIZED TIN/LEAD PLATE AREA, BOTH OVER 1.27 μm MIN NICKEL ON ENTIRE STOCK.
- △ 0.76 μm MIN GOLD IN LOCALIZED GOLD PLATE AREA, 2.5 μm MIN BRIGHT TIN/LEAD IN LOCALIZED TIN/LEAD PLATE AREA, BOTH OVER 1.27 μm MIN NICKEL ON ENTIRE STOCK.
- 4. WIRE RANGE 20-24 AWG.
- 5. INSULATION RANGE 0.89-1.52
- △ 2.54 μm MIN BRIGHT TIN ENTIRE STOCK OVER 1.27 μm MIN NICKEL ENTIRE STOCK.

2.00 MIN LOCALIZED TIN/LEAD PLATE AREA △ 2 △ 3



△ 6	1-794612-0
△ 3	794612-3
△ 2	794612-2
△ 1	794612-1
FINISH	PART NUMBER



METRIC

THIS DRAWING IS A CONTROLLED DOCUMENT OF TYCO ELECTRONICS CORPORATION. IT IS SUBJECT TO CHANGE AND THE USER HAS THE OBLIGATION TO CONTACT THE LATEST REVISION AND/OR DATE.		DWN	W J RUDY	29AUG2000	Tyco Electronics Harrisburg, PA 17105-3608
DIMENSIONS: mm		CHK	W DAVIS	29AUG2000	
TOLERANCES UNLESS OTHERWISE SPECIFIED:		APVD	W DAVIS	29AUG2000	
0 PLC ± 1 PLC ± 2 PLC ±0.13 3 PLC ± 4 PLC ± ANGLES ± FINISH -		NAME	PLUG CONTACT, CRIMP SNAP, 20-24 AWG LOOSE PIECE, MICRO MATE-N-LOK™		
MATERIAL	0.20 THK BRASS	PRODUCT SPEC	-		RESTRICTED TO
CUSTOMER DRAWING		APPLICATION SPEC	-		SIZE
		WEIGHT	-		CAGE CODE
		SCALE		10:1	DRAWING NO
		REV		1	00779
		SHEET		1	C-794612
		OF		1	
		REV		B	