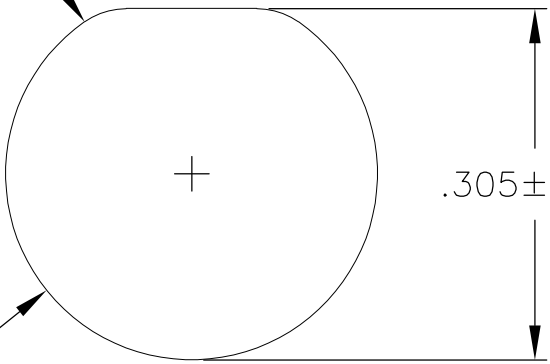


LOC	DIST	REVISIONS					
		P	LTR	DESCRIPTION	DATE	DWN	APVD
—	—		H	UPDATE PER ECO-11-013056	23 JUN 11	CAS	MKS

SUGGESTED PANEL CUT-OUT

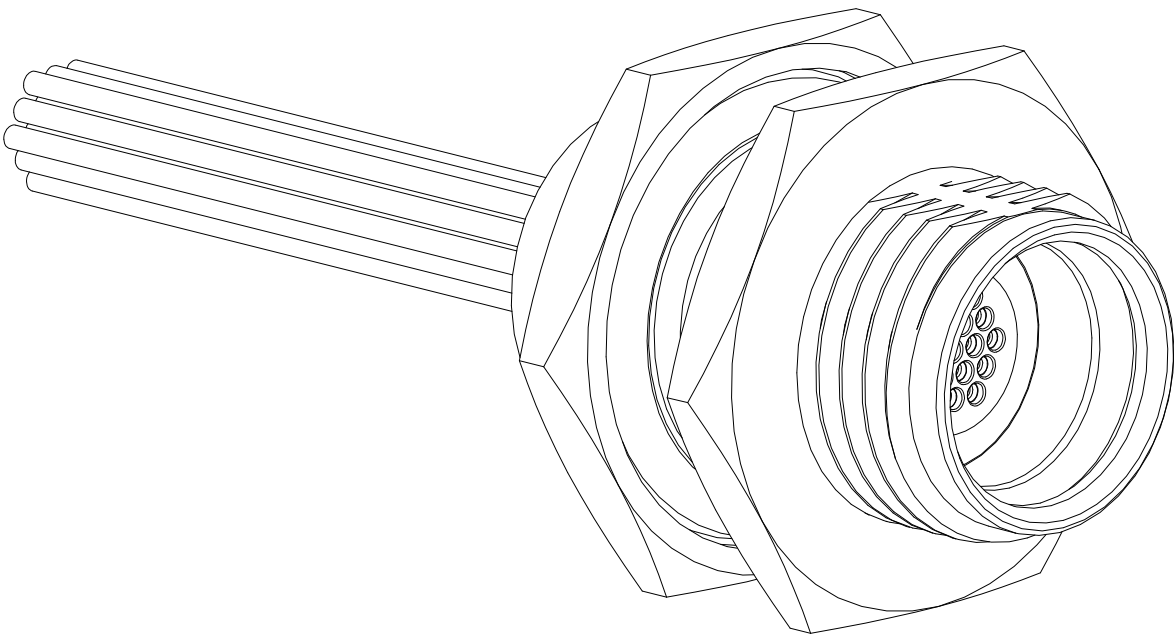
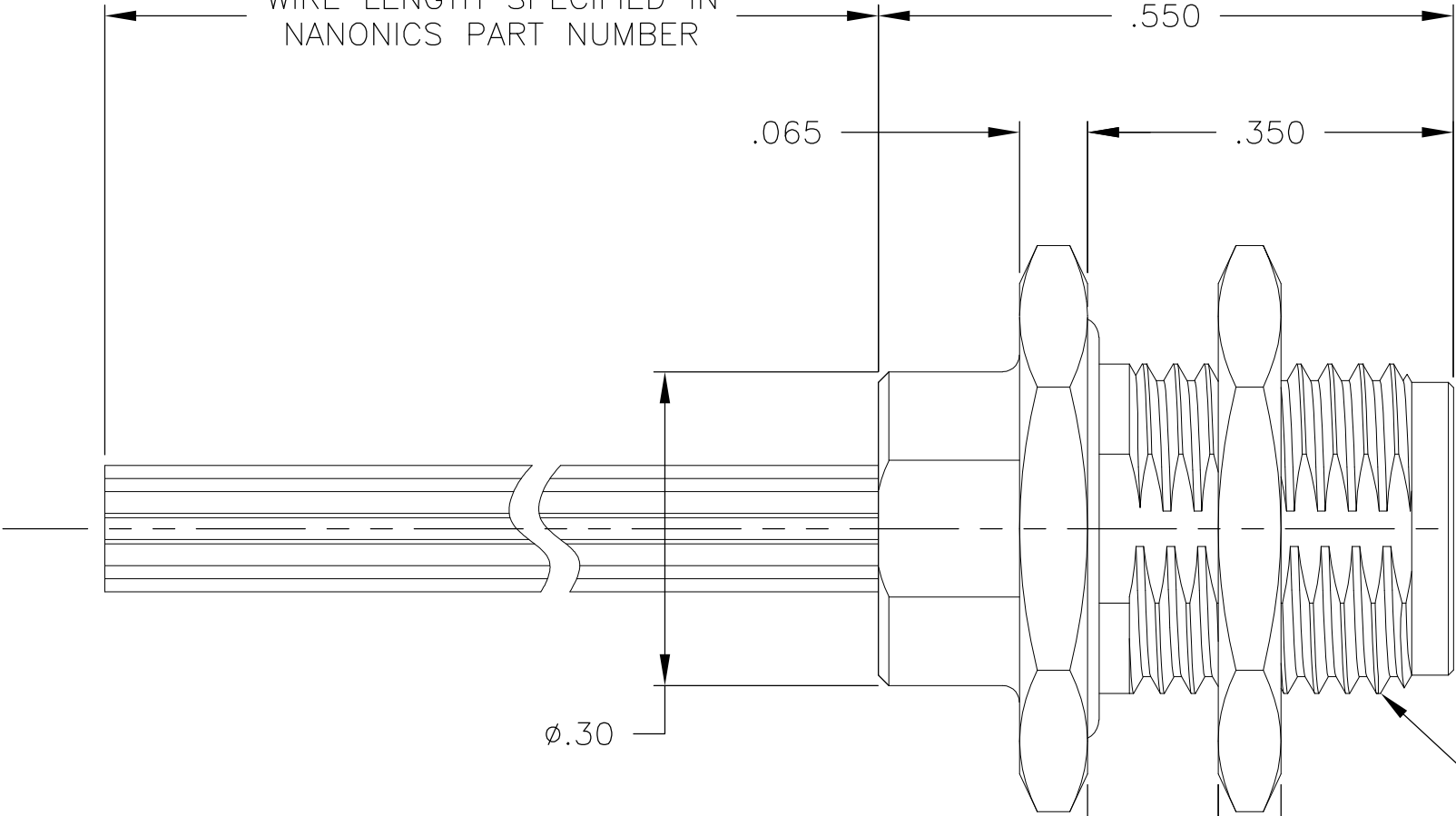
2X R.063



ø.323

.305±.002

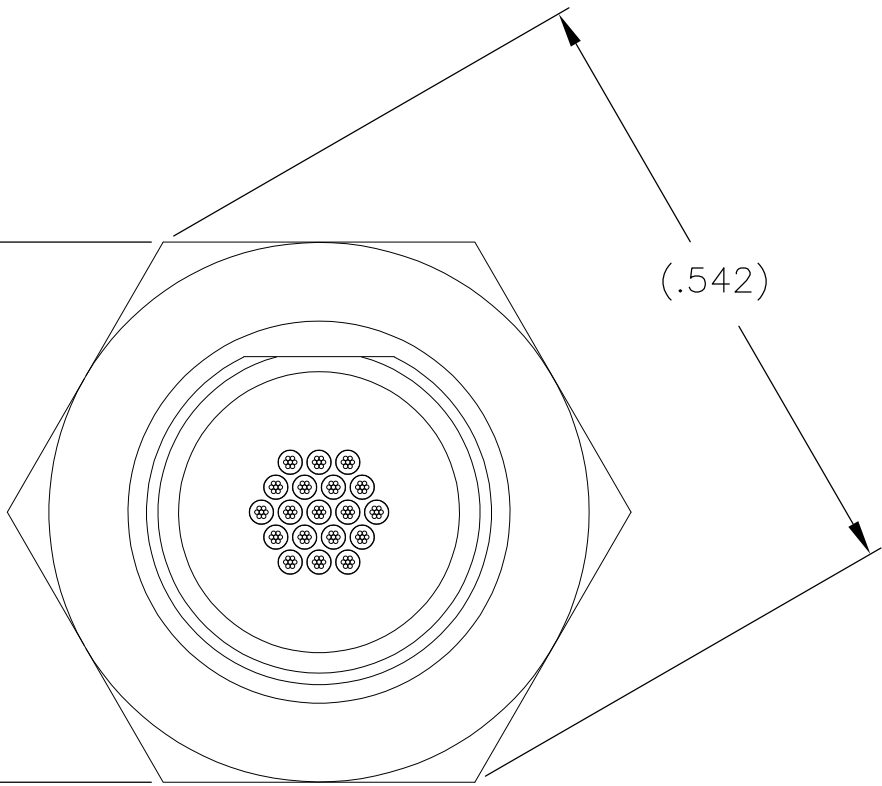
WIRE LENGTH SPECIFIED IN NANONICS PART NUMBER



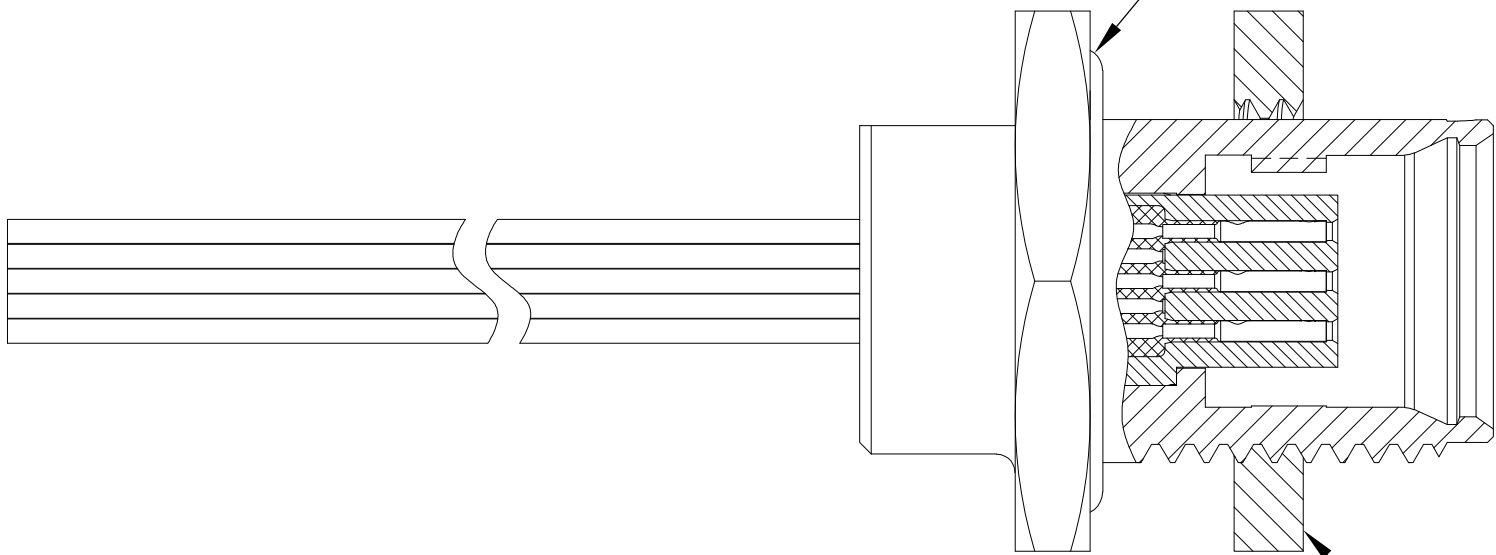
.125 MAX PANEL THICKNESS FOR THREADED COUPLING
.250 MAX PANEL THICKNESS FOR QUICK DISCONNECT

M8.0 X 0.75-6g THREAD

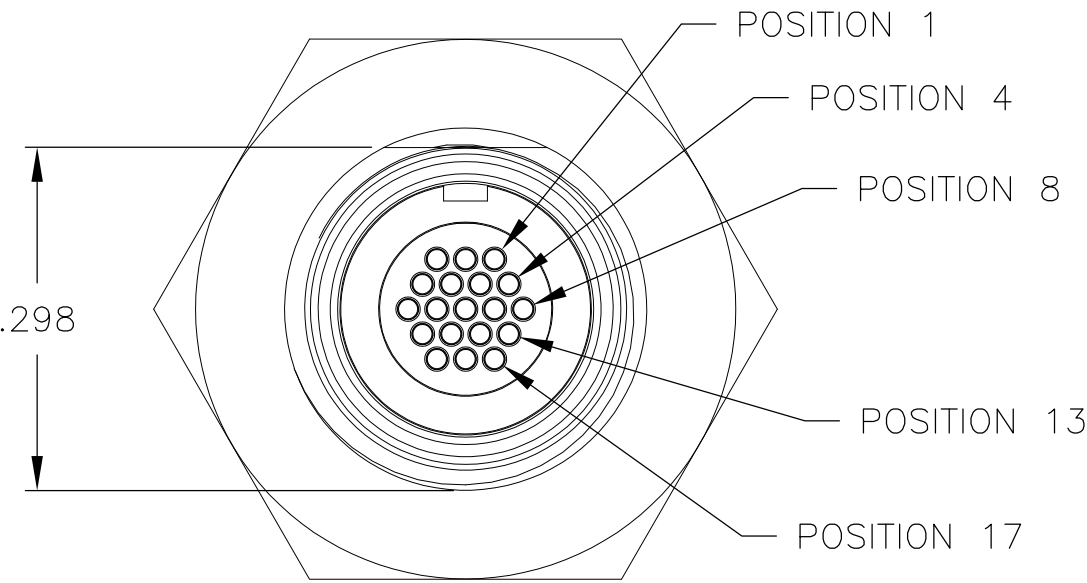
.469
HEX FLANGE
AND JAM NUT



O-RING SEAL



JAM NUT



- 1 CONNECTOR BODY AND JAM NUT MATERIAL: 6061-T6 ALUMINUM, ELECTROLESS NICKEL PLATED PER SAE-AMS-C-26074 OR SAE-AMS-2404E
LOCKING RING MATERIAL: BERYLLIUM COPPER, ELECTROLESS NICKEL PLATED PER SAE-AMS-C-26074 OR SAE-AMS-2404E
INSULATOR MATERIAL: LIQUID CRYSTAL POLYMER (LCP) PER ASTM D5138 OR POLYPHENYLENE SULFIDE (PPS) PER ASTM D4067
O-RING MATERIAL: FLUOROSILICONE

- 2 WIRE TERMINATION: 28 AWG SOLID, 30 AWG STRANDED WIRE OR SMALLER
3 LUBRICATE O-RING WITH PARKER SUPER-O-LUBE PRIOR TO INSTALLATION
4 THIS DRAWING PREVIOUSLY IDENTIFIED AS NANONICS 303-0030

THIS DRAWING IS A CONTROLLED DOCUMENT.		DWN M. STORRY 7 MAY 99	TE Connectivity			
DIMENSIONS: INCHES		CHK E. PAULUS 7 MAY 99				
		APVD S. KAIN 26 JAN 00	NAME			
		PRODUCT SPEC	RECEPTACLE ASSEMBLY, CIRCULAR, PANEL MOUNT, THREADED COUPLING/ QUICK DISCONNECT, METAL 19 POSITION			
TOLERANCES UNLESS OTHERWISE SPECIFIED:		APPLICATION SPEC	SIZE	CAGE CODE	DRAWING NO	RESTRICTED TO
0 PLC ± - 1 PLC ± - 2 PLC ± .010 3 PLC ± .005 4 PLC ± - ANGLES ± 1°		—	A2	0PJN9	C=1589061	—
MATERIAL SEE NOTES		FINISH SEE NOTES	WEIGHT	—	SCALE 6:1	SHEET 1 of 1
		CUSTOMER DRAWING			REV H	

Mouser Electronics

Authorized Distributor

Click to View Pricing, Inventory, Delivery & Lifecycle Information:

[TE Connectivity:](#)

[1589061-4](#) [QCM019SC2DC006P](#)