

Introducing High Power Inverted Thru Board SMT Connector

The High Power Inverted Thru Board SMT Connector, available in 2, 3 and 4 positions, provides a means to bring power to LED aluminum clad boards from the underside of the printed circuit board. The mating Economy Power II (EP) plug connectors, based on a .156" [3.96mm] pitch, are rated for 600VAC up to 7A and accepts 22 - 18 AWG [0.34mm² to 0.75mm²] stranded wire sizes that are ideal for delivering power to printed circuit boards.

KEY FEATURES

- Eliminates wire dress management issues with discrete wire leads around the top surface of LED printed circuit boards
- Available in 2, 3 and 4 Positions
- Accepts Economy Power II (EP II) mating connectors
- EP II connectors provide positive latching
- Low profile top surface height of 2.00mm above the LED printed circuit board
- Rounded corners to prevent shadowing
- Connector is positioned in cutout or notch in the printed circuit board
- Surface mount board locks provides stability during mating and unmating
- High temperature material for reflow soldering process
- Tape and reel packaging for high speed SMT processing
- Flat top surface allows for vacuum pick up
- EP II cable assemblies available upon request
- RoHS compliant

APPLICATIONS

- Indoor and outdoor solid state lighting fixtures
- Solid state lighting modules and controls
- Industrial / commercial meters and controls

MECHANICAL

- Operating Temperature: -30°C to +105° Temperature
- Meets 2.0mm creep and clearance design
- EP II Connectors accepts 22 - 18 AWG (0.34mm² - 0.75mm²) stranded wire

ELECTRICAL

- Operating Current: 7A
- Operating Voltage: 600 VAC
- Dielectric Withstanding Voltage: 2200 VAC

MATERIALS

- Housing: UL 94 V0 rated high temperature resistant thermoplastic
- Contacts: Tin over nickel plated copper alloy

APPLICATIONS AND SPECIFICATIONS

- cUR approved to UL1977
- High Power Inverted Thru Board SMT Connector
 - Application Specification: [114-32030](#)
 - Product Specification: [108-133000](#)
- EP II Contacts and Connector
 - Application Specification: [114-13265](#)
 - Product Specification: [108-2297](#)

APPLICATION TOOLING

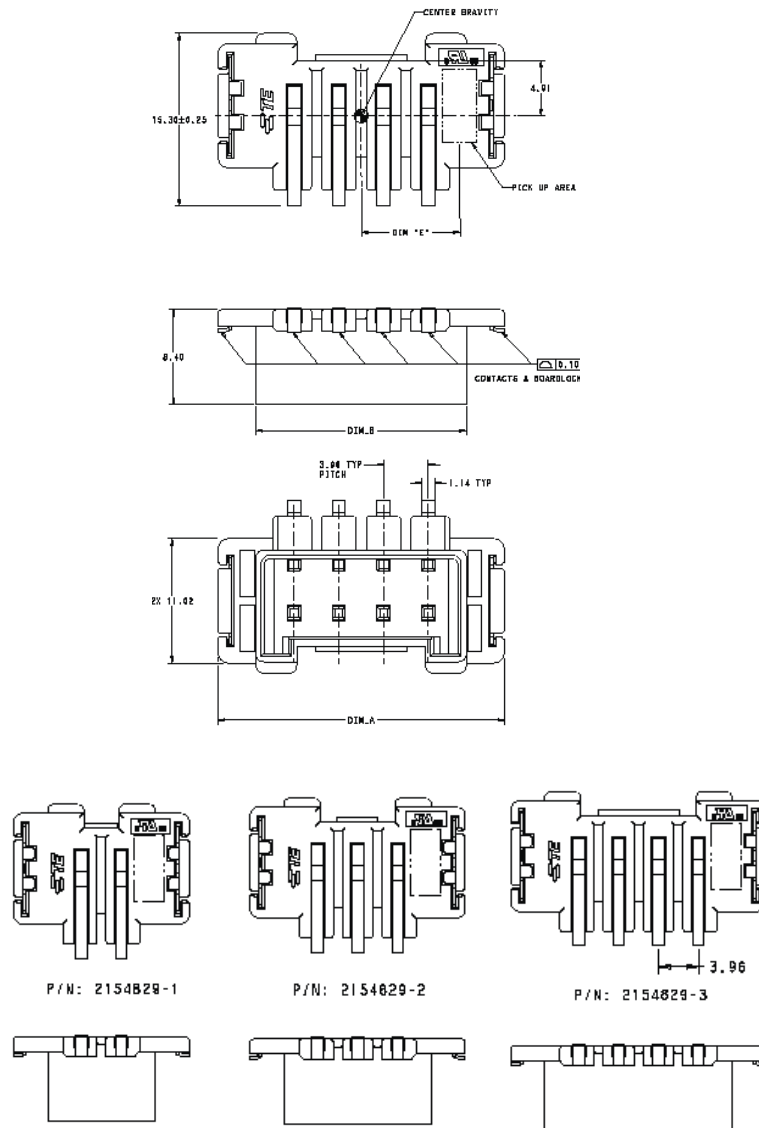
- EP II Contact Applicator: [1385286-1, -2 or -3](#)



PRODUCT OFFERING

ITB Connector P/N	POSN	Dim. A	Dim. B	Dim. C	Dim. D	Dim. E	EP II Plug Cable Assy P/Ns
2154829-1	2	25.3	18.6	19	12.04	8.73	2154828-1
2154829-2	3	21.34	14.64	15	10.06	6.75	2154828-2
2154829-3	4	17.38	10.68	11	8.08	4.77	2154828-3

PRODUCT DIMENSIONS



Dimensions are shown for reference purposes only. Specifications subject to change. Customer drawing should be used for all design activity.



Mouser Electronics

Authorized Distributor

Click to View Pricing, Inventory, Delivery & Lifecycle Information:

[TE Connectivity:](#)

[2154829-2](#)