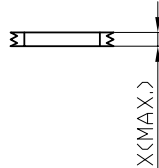


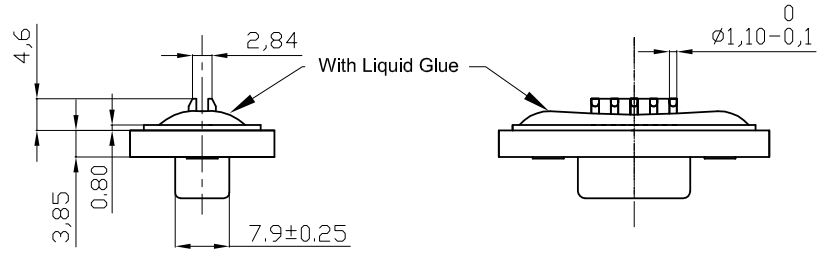
1 2 3 4 5 6 7

A



Panel Thickness  
Screw L=5.0 For Panel Thickness Under 1.2mm  
Screw L=6.0 For Panel Thickness Between 1.2-2.0mm

B

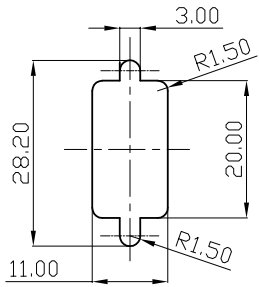


**NOTES:**

**MATERIAL**

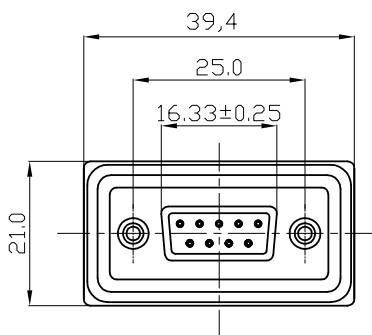
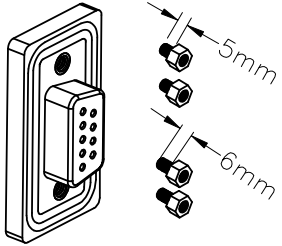
- 1. Insulator Material: Black, NYLON+G/F UL94V-0 ③
- 2. Contact Material: Copper Alloy
- ③ 3. Plating: 1u" Gold Plating
- 4. Waterproof Rate: IP67
- 5. Applicable Wire Range: 22AWG-26AWG
- 6. Do Mating Test After Glued

C



Recommended Panel Cut-Out

D



③ **Electrical**

- 1. Contact resistance: 20mΩ max.
- 2. Insulation resistance: 500MΩ min. at DC500V
- 3. Dielectric withstanding voltage: 500V AC  
1 minute
- 4. Rating current: 2A
- 5. Durability: 500 cycles
- 6. Temperature range: -20°C ~ +85°C

E

F

**RoHS compliant**  
Unit: mm

Scale	Free						Date	Name	Customer-No.
TOLERANCE						Drawn	18.12.2008	JACK	
X.X	±0.25					Approved	23.01.2018	Amy	ASSMANN WSW-No.
X.XX	±0.10								A-DF 09 LL-WP
X.XXX	±0.05	③	Add notes	23.01.2018	Segal				Drawing-No.
DIM	TOL	②	Update	13.08.2015	Joanna	<b>ASSMANN</b> WSW components		ASS 3228 CO rev03	
		①	Drawn	18.12.2008	JACK			Replace	Sheet
Angle	±1°	Id.	Modification	Date	Name				

G

H

1 2 3 4 5 6 7