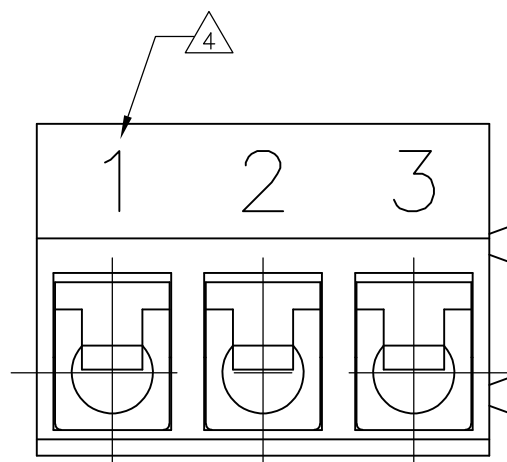
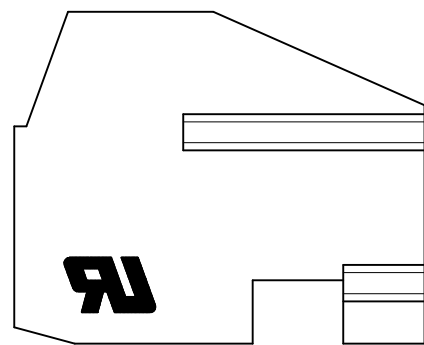
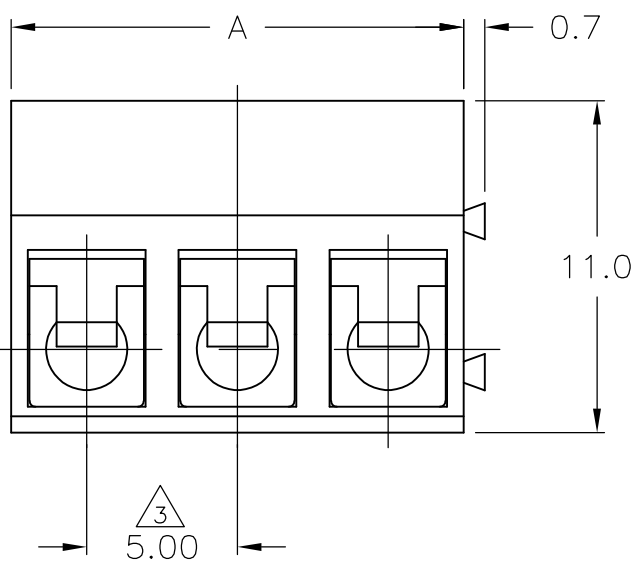
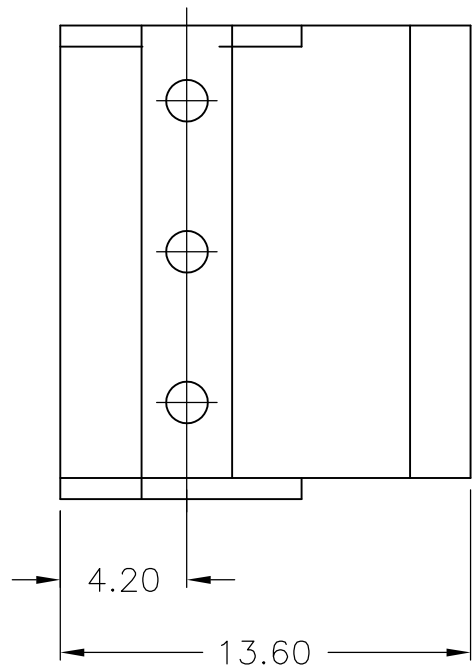
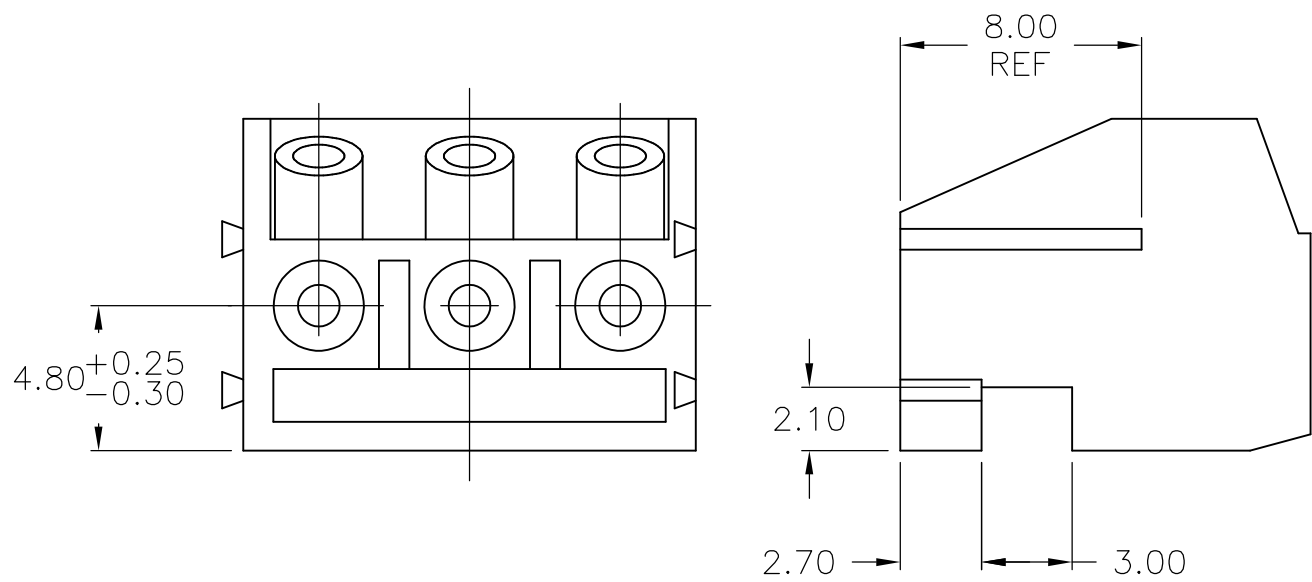
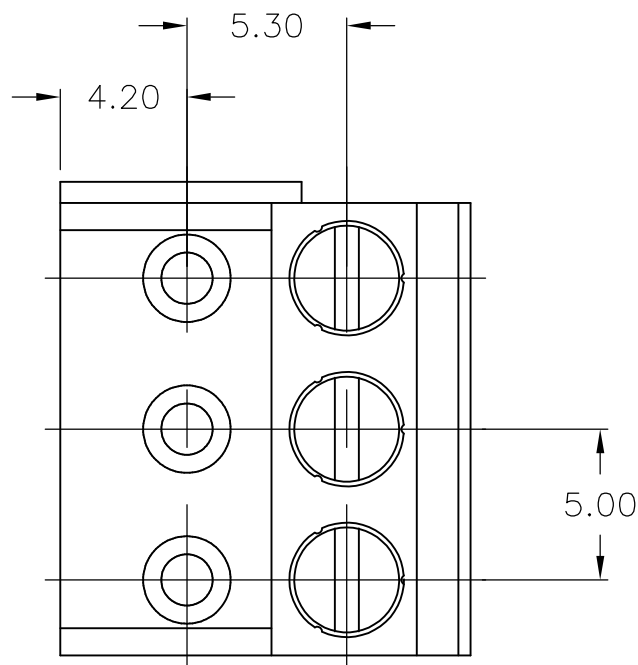




LOC	DIST	REVISIONS					
FT	0	P	LTR	DESCRIPTION	DATE	DWN	APVO
			A2	HIGH TEMP PHRASE REMOVED	05MAY2016	FP	NG

- 1 ALL DIMENSIONS ARE IN MM.
- 2 BUCHANAN LOGO TO APPEAR ON HOUSING LOCATION
OPTIONAL WHERE SPACE PERMITS.
- 3 NON CUMULATIVE
- 4 PARTS TO BE MARKED WITH PERMANENT BLACK MARKING.
- 5 POSITIONS 1-2, 3-4, AND 7-8 COMMONED. POSITIONS 9-10
NOT LOADED.
- 6 POSITIONS 1-2, 7-8, AND 9-10 COMMONED.

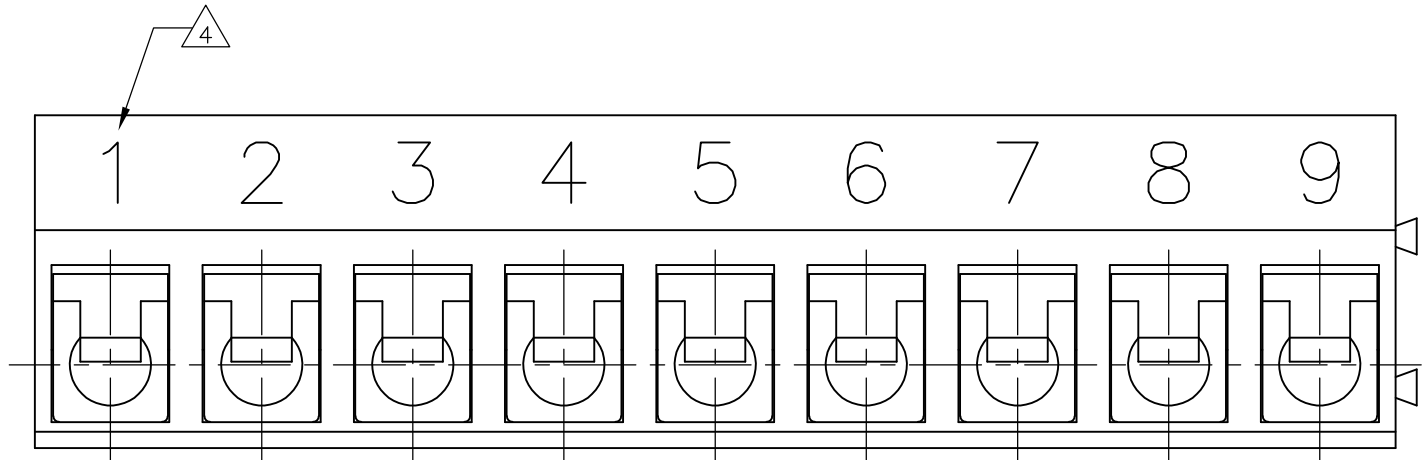


DETAIL C

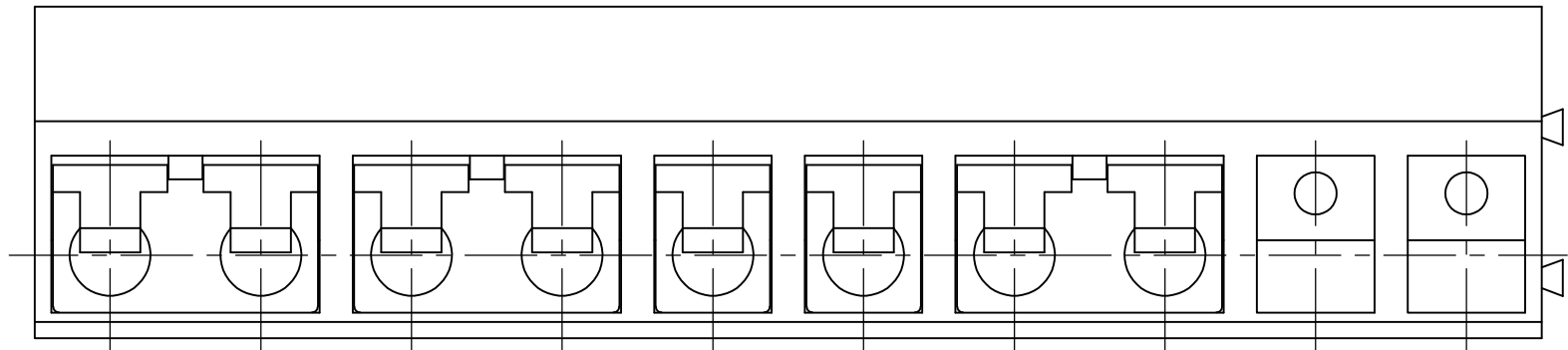
6 5	OBSOLETE	DETAIL F	TIN	50.00	10	5-1776263-2
	OBSOLETE	DETAIL E	TIN	50.00	10	5-1776263-1
	OBSOLETE	DETAIL D	TIN	45.00	9	5-1776263-0
	OBSOLETE		0.254um GOLD	10.00	2	4-1776263-9
	OBSOLETE	DETAIL C	TIN	15.00	3	4-1776263-8
	OBSOLETE		GOLD FLASH	35.00	7	4-1776263-7
	OBSOLETE		GOLD FLASH	30.00	6	4-1776263-6
	OBSOLETE		GOLD FLASH	15.00	3	4-1776263-3
	OBSOLETE		0.381um GOLD	35.00	7	3-1776263-7
	OBSOLETE		0.381um GOLD	30.00	6	3-1776263-6
	OBSOLETE		0.381um GOLD	15.00	3	3-1776263-3
	OBSOLETE		TIN	120.00	24	2-1776263-4
	OBSOLETE		TIN	115.00	23	2-1776263-3
	OBSOLETE		TIN	110.00	22	2-1776263-2
	OBSOLETE		TIN	105.00	21	2-1776263-1
	OBSOLETE		TIN	100.00	20	2-1776263-0
	OBSOLETE		TIN	95.00	19	1-1776263-9
	OBSOLETE		TIN	90.00	18	1-1776263-8
	OBSOLETE		TIN	85.00	17	1-1776263-7
	OBSOLETE		TIN	80.00	16	1-1776263-6
	OBSOLETE		TIN	75.00	15	1-1776263-5
	OBSOLETE		TIN	70.00	14	1-1776263-4
	OBSOLETE		TIN	65.00	13	1-1776263-3
		—	TIN	60.00±0.40	12	1-1776263-2
		—	TIN	55.00±0.40	11	1-1776263-1
		—	TIN	50.00±0.35	10	1-1776263-0
		—	TIN	45.00±0.30	9	1776263-9
		—	TIN	40.00±0.30	8	1776263-8
		—	TIN	35.00±0.25	7	1776263-7
		—	TIN	30.00±0.25	6	1776263-6
		—	TIN	25.00±0.25	5	1776263-5
		—	TIN	20.00±0.25	4	1776263-4
		—	TIN	15.00±0.25	3	1776263-3
		—	TIN	10.00±0.25	2	1776263-2
		DETAIL	FINISH	DIM A	NO OF POS	PART NUMBER

THIS DRAWING IS A CONTROLLED DOCUMENT.		DWN S. SCHLEGEL	5/6/05	 TE Connectivity							
		CHK C. RICHARD	5/6/05								
DIMENSIONS:		TOLERANCES UNLESS OTHERWISE SPECIFIED:		NAME TERMINAL BLOCK, 90 DEGREE, STACKING W/ WIRE PROTECTION, 5.0mm PITCH							
mm											
		0 PLC ± -									
		1 PLC ± 0.3									
		2 PLC ± 0.25									
		3 PLC ± -		SIZECAGE CODEDRAWING NORESTRICTED TO							
		4 PLC ± -									
		ANGLES ± -									
MATERIAL		FINISH		WEIGHT		A200779C-1776263		-			
-		-		CUSTOMER DRAWING		SCALE6:1		SHEET1 of 2		REV A2	

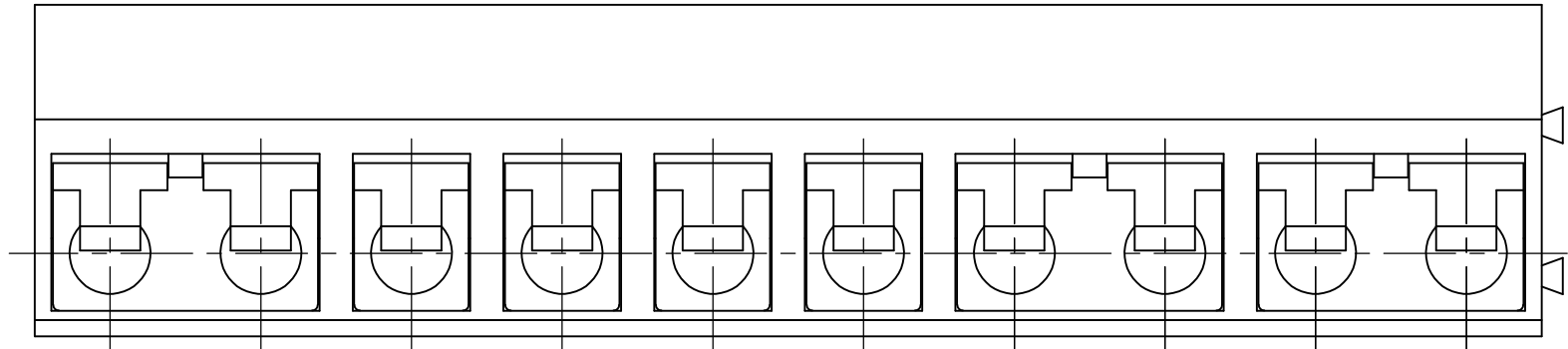
LOC	DIST	REVISIONS				
FT	0	P	LTR	DESCRIPTION	DATE	DWN
		-		SEE SHEET 1	-	-



DETAIL D



DETAIL E



DETAIL F

1. Application and Features:

- 1-1. This terminal block is designed to plug onto loose pins or pin header strips.
1-2. With wire guard for wire protection so that the screw doesn't press directly on the wire.
1-3. Easy handling due to the pluggable system horizontally or vertically.

2. Technical Data:

- 2-1. Material(blue)
2-1-1. Housing: PA 66
2-1-2. Metal Housing: Brass
Finish: see table.
2-1-3. Wire Guard: Phoshor Bronze
2-1-4. Screw: Steel galvanized and chromitized, M2.6.

2-3. Electrical:

- 2-3-1. Current rating: 10 amps/way max.
2-3-2. Contact resistance: 20mohm (MAX).
2-3-3. Insulation resistance: 2000Mohm /500V.
2-3-4. Withstanding voltage: 1500 VAC/min, test time= 60sec/1pc.
2-3-5. Operation voltage: 300 VAC.
2-3-6. Wire Range: 16-24 AWG.

2.4 Mechanical:

- 2-4-1. Torque: 3 in-lb.
2-4-2. Contact retention Force: 0.2Kg/cm (min).
2-4-3. Operating temperature: -40°C to +105°C.
2-4-4. Solderability: 95% coverage (min).
test temperature=230°C±10°C
test time= 3sec±0.5sec.

THIS DRAWING IS A CONTROLLED DOCUMENT.		DWN	S	SCHLEGEL	5/6/05	TE Connectivity		
		CHK	C	RICHARD	5/6/05			
		APVD	C	RICHARD	5/6/05	NAME		
		PRODUCT SPEC				TERMINAL BLOCK, 90 DEGREE, STACKING W/ WIRE PROTECTION, 5.0mm PITCH		
		APPLICATION SPEC				SIZE	CAGE CODE	DRAWING NO
						A2	00779	C=1776263
		WEIGHT				RESTRICTED TO		
		CUSTOMER DRAWING				SCALE	SHEET	REV
						6:1	2 OF 2	A2

Mouser Electronics

Authorized Distributor

Click to View Pricing, Inventory, Delivery & Lifecycle Information:

[TE Connectivity:](#)

[1-1776263-0](#)