

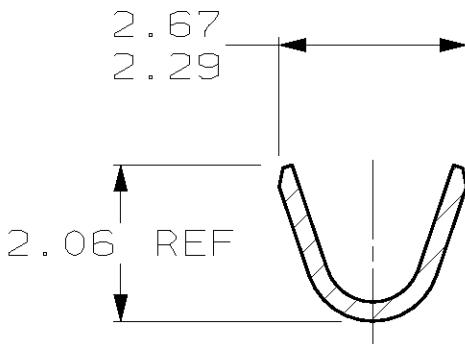
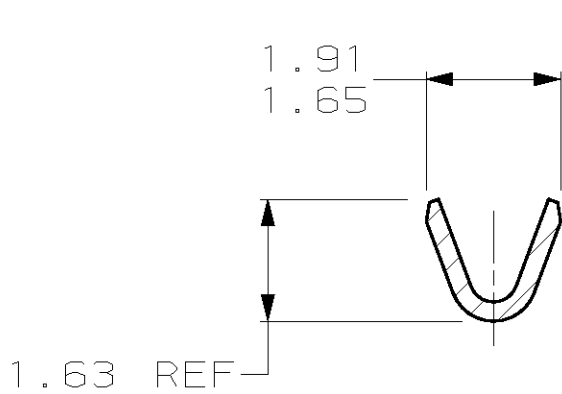
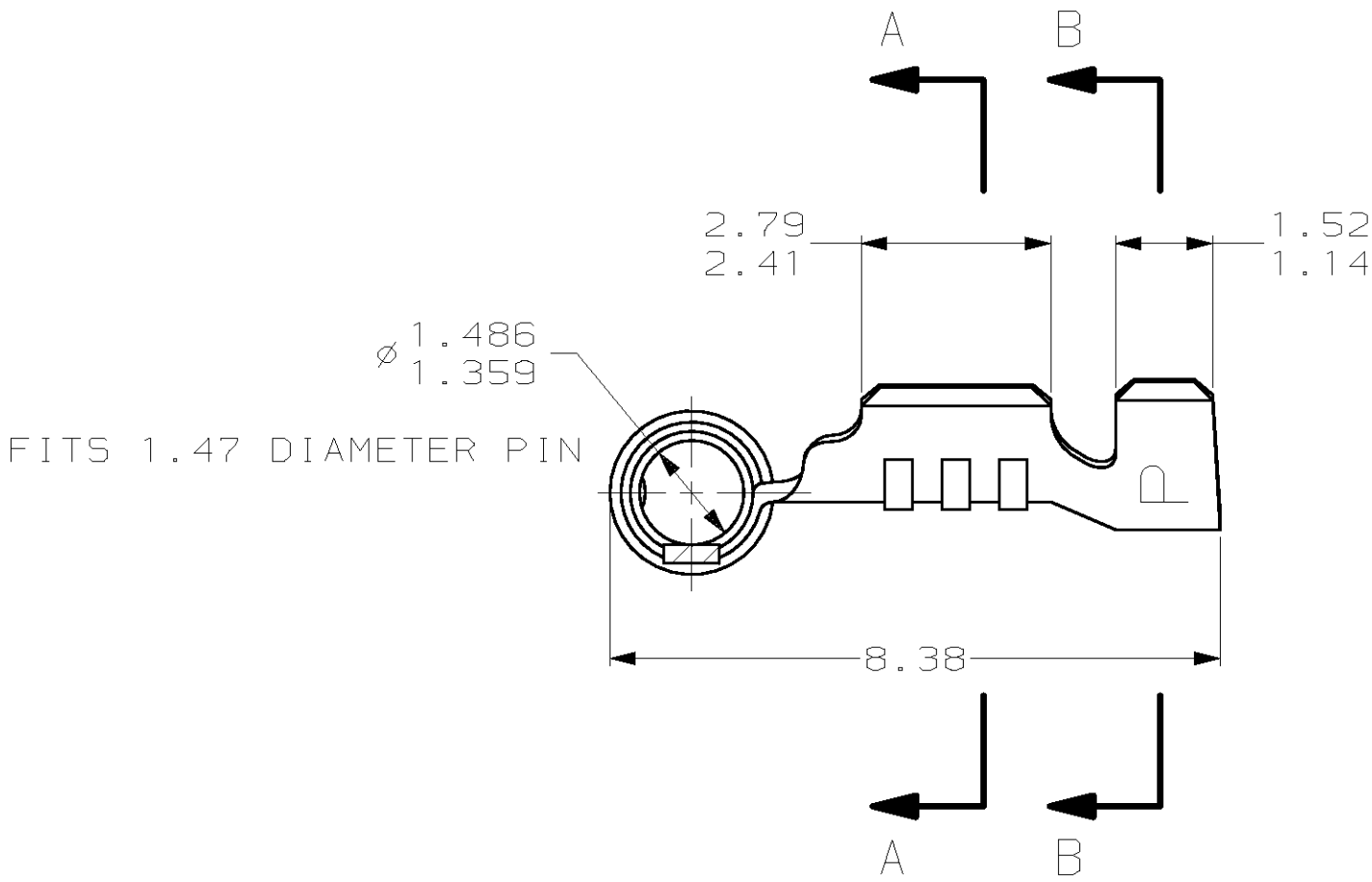
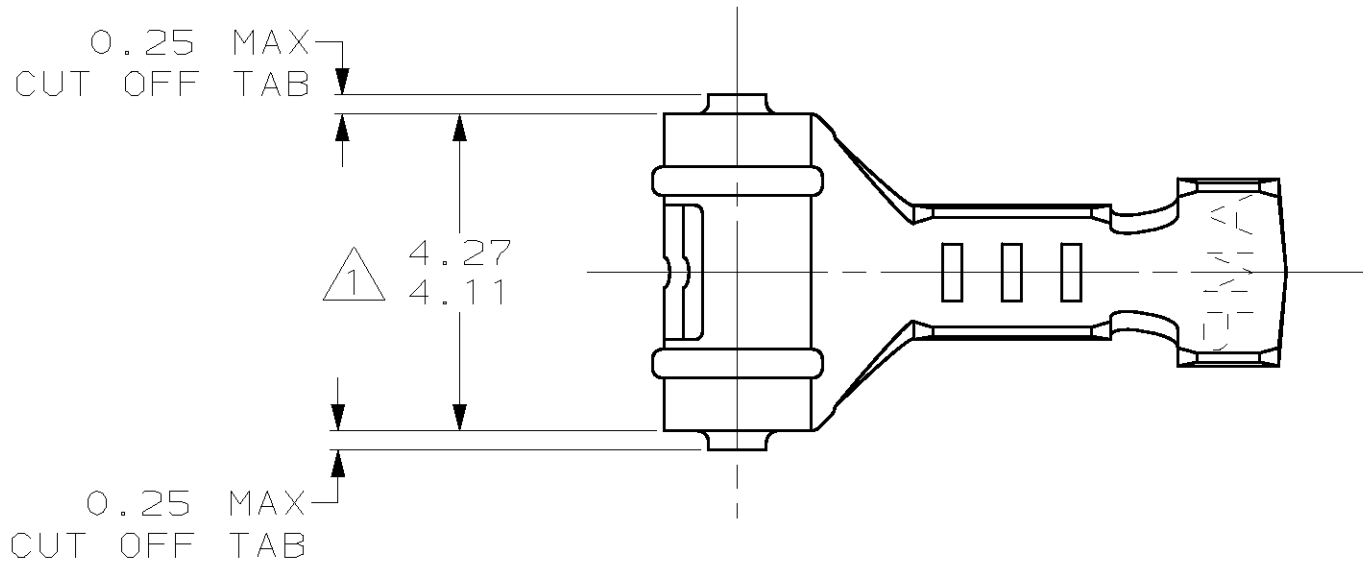
THIS DRAWING IS UNPUBLISHED.

RELEASED FOR PUBLICATION

BY AMP INCORPORATED. ALL RIGHTS RESERVED.

LOC	DIST	REVISIONS				
CM	52	P	LTR	DESCRIPTION	DATE	APVD
		B		REV & REDWN PER EC 0L30-0125-97	6-12-97	RS

- 1 0.00038 MIN SELECTIVE GOLD PLATING ON INSIDE OF RECEPTACLE OVER NICKEL OVER ALL UNDERPLATE.
2. WIRE RANGE: 0.12 - 0.4 MM² (26 - 22 AWG)
3. INSULATION RANGE: 0.89 - 1.65



0.25 BE COPPER	350189-2
PRE-TIN	0.25 PH BRZ
FINISH	MATERIAL

1.359	.0535	1.91	.075	4.11	.162	-	-
1.14	.045	1.65	.065	2.79	.110	-	-
0.89	.035	1.63	.064	2.67	.105	-	-
0.25	.010	1.52	.060	2.41	.095	-	-
0.13	.005	1.486	.0585	2.29	.090	8.38	.330
0.00038	.000015	1.47	.058	2.06	.081	4.27	.168
MM	IN	MM	IN	MM	IN	MM	IN

CONVERSION TABLE

METRIC

THIS DRAWING IS A CONTROLLED DOCUMENT.

DIMENSIONS:
mm

TOLERANCES UNLESS OTHERWISE SPECIFIED:

0 PLC ±-
1 PLC ±-
2 PLC ±0.13
3 PLC ±-
4 PLC ±-
ANGLES ±-

MATERIAL

SEE TABLE

FINISH

SEE TABLE

DWN
T. BECK
6-12-97

CHK
R. SWING
6-12-97

APVD
A. BEDDICK
6-17-97

PRODUCT SPEC
108-1025

APPLICATION SPEC
114-1008

WEIGHT
-

CUSTOMER DRAWING

AMP Incorporated
Harrisburg, PA 17105-3608

RECEPTACLE, .058 DIAMETER, 26-22 AWG, .035-.065 INSULATION, RIGHT ANGLE, LOOSE PIECE, P.C. CONTACT

SIZE
A2

CAGE CODE
00779

DRAWING NO
350189

RESTRICTED TO
-

SCALE
10:1

SHEET
1

OF
1

REV
B

Mouser Electronics

Authorized Distributor

Click to View Pricing, Inventory, Delivery & Lifecycle Information:

[TE Connectivity:](#)

[350189-2](#)