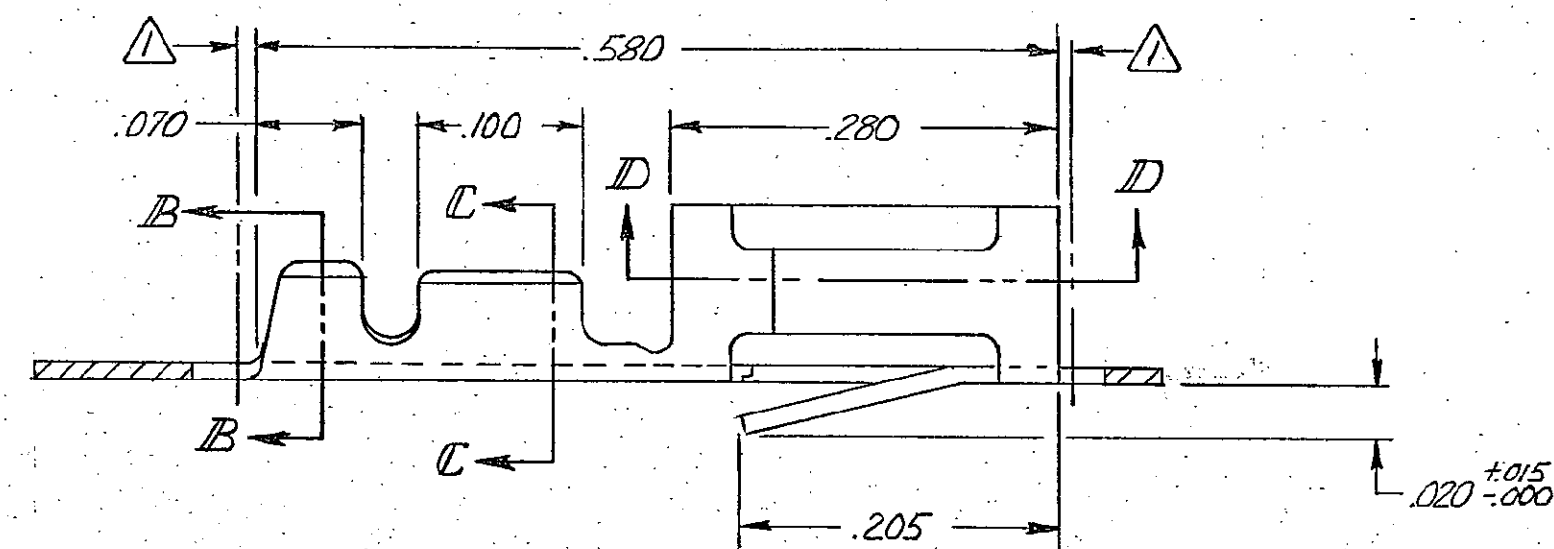
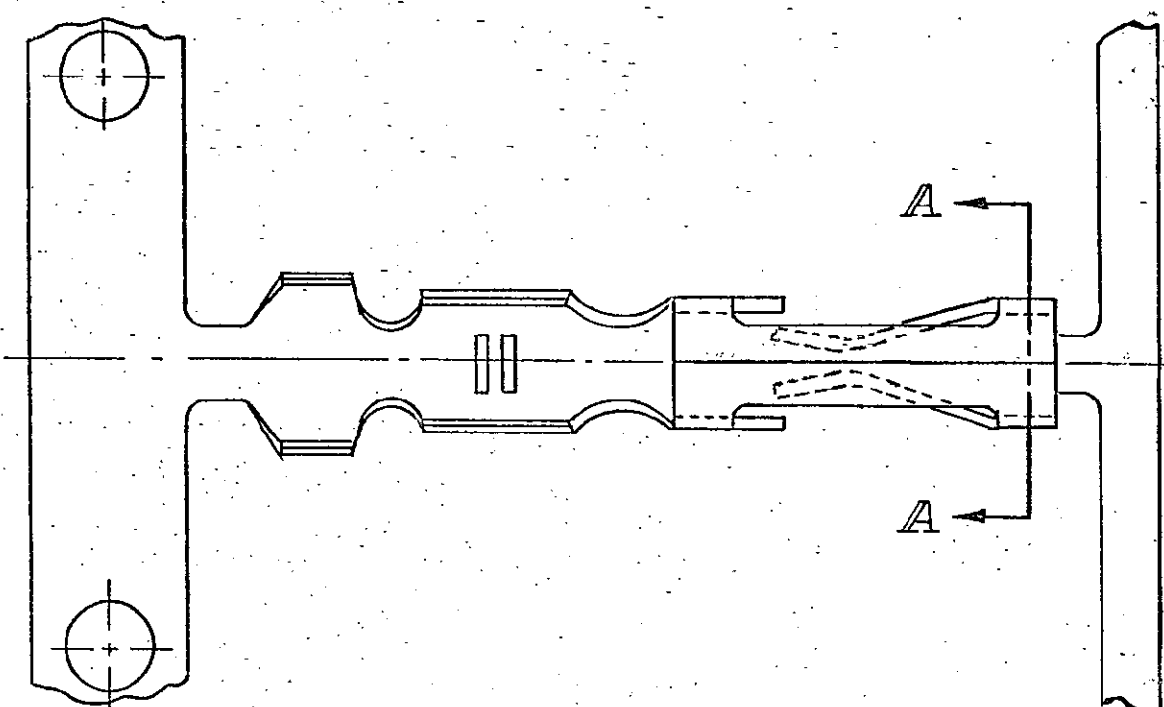
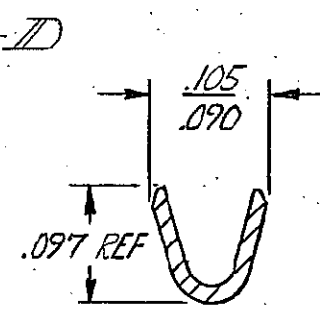
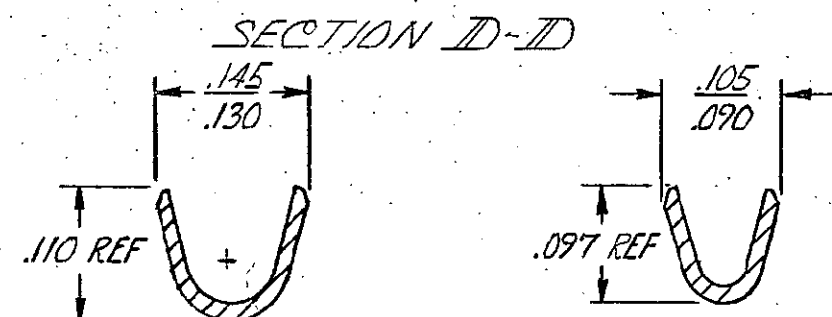
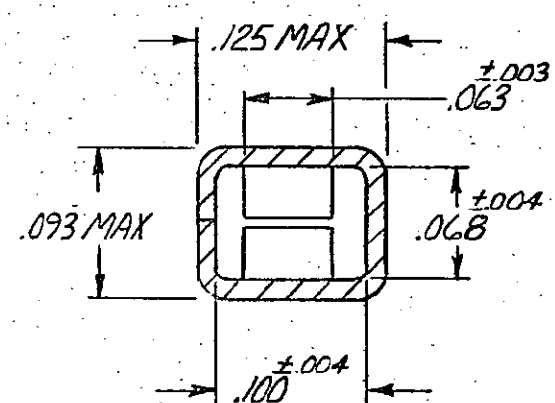
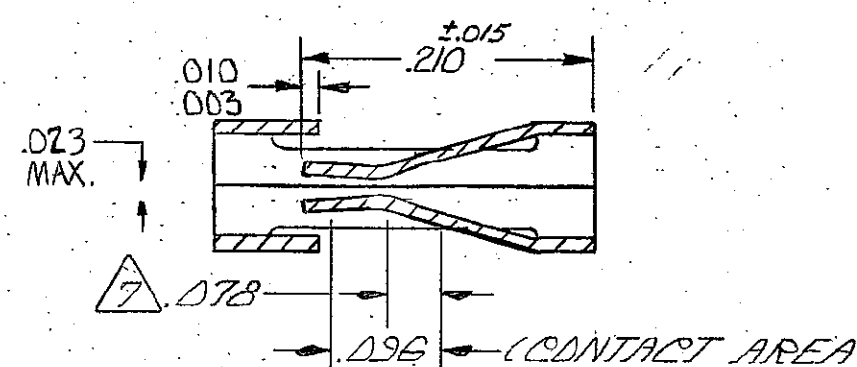
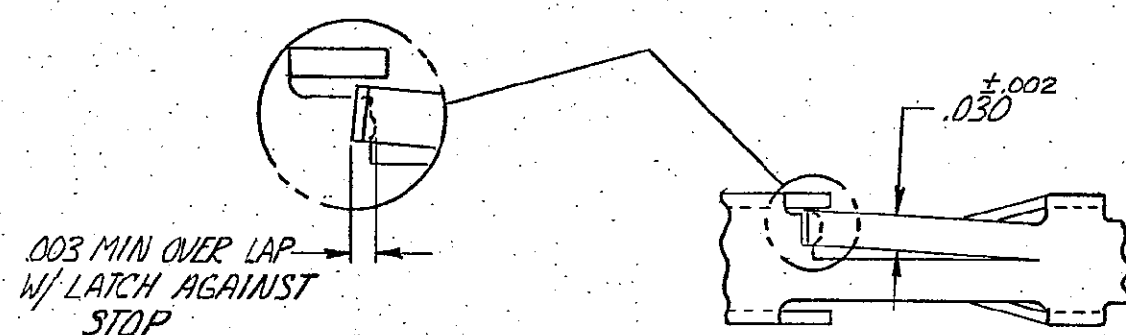


© COPYRIGHT

REVISIONS					
P	F	ZONE	LTR	DESCRIPTION	DATE
					APPROVED
			K1	REVISED PER ECO-11-005294	06APR11
					HMR



1. .010 MAX CUT-OFF TAB FOR LOOSE PIECE.
2. GOLD FLASH OVER .000050 NICKEL ENTIRE CONTACT, .000015 GOLD ON CONTACT AREA
3. GOLD FLASH OVER .000050 NICKEL ENTIRE CONTACT .000030 GOLD ON CONTACT AREA.
4. .000016 MIN TIN.
5. LUBRICATED
6. .000100-.000200 BRIGHT TIN OVER .000030 NICKEL.
7. POINT OF MEASUREMENT FOR PLATING THICKNESS.
8. .000015 GOLD ON CONTACT AREA, .000050-.000100 BRIGHT TIN-LEAD ON TERMINATION AREA, ALL OVER .000050 NICKEL ENTIRE TERMINAL.
9. .000030 GOLD ON CONTACT AREA, .000050-.000100 BRIGHT TIN-LEAD ON TERMINATION AREA, ALL OVER .000050 NICKEL ENTIRE TERMINAL.
10. OBSOLETE PART NUMBER.



SECTION A-A

SECTION B-B
INSULATION RANGE
.051-.090 DIASECTION C-C
WIRE RANGE
#18-#22

1	102104-6	102100-9/10
2	102104-5	102100-8/10
3	102104-4	102100-7
4	102104-3	102100-5
5	102104-2	102100-2
6	102104-1	102100-1
FINISH	LOOSE PIECE P/N	PART NO

UNLESS OTHERWISE SPECIFIED DIMENSIONS ARE IN INCHES. TOLERANCES ON: DECIMALS ±.005 ANGLES ±	CONTRACT NO DR CHK MATERIAL PHOS. BRONZE FINISH SEE TABLE	TE Connectivity NAME CONTACT, MOD I, RECEPTACLE, CRIMP SNAP-IN, HIGH PRESSURE, #18-#22AWG, SIDE FEED SIZE C CODE IDENT NO 00779 DRAWING NO 102100 SHEET
--	---	--

CUSTOMER DRAWING

Mouser Electronics

Authorized Distributor

Click to View Pricing, Inventory, Delivery & Lifecycle Information:

[TE Connectivity:](#)

[102100-5 \(Cut Strip\)](#) [102100-5 \(Mouser Reel\)](#) [102100-2 \(Mouser Reel\)](#)