
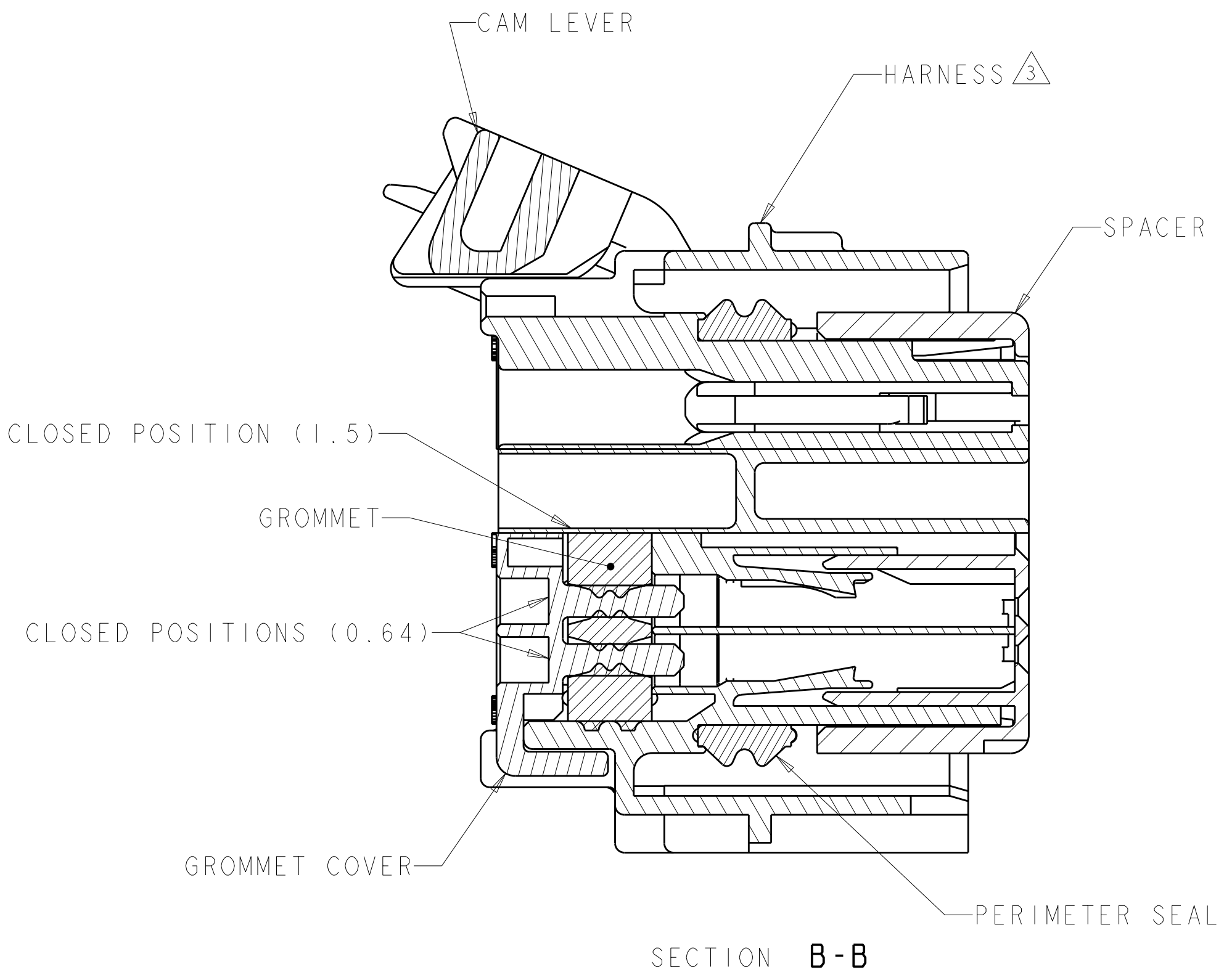
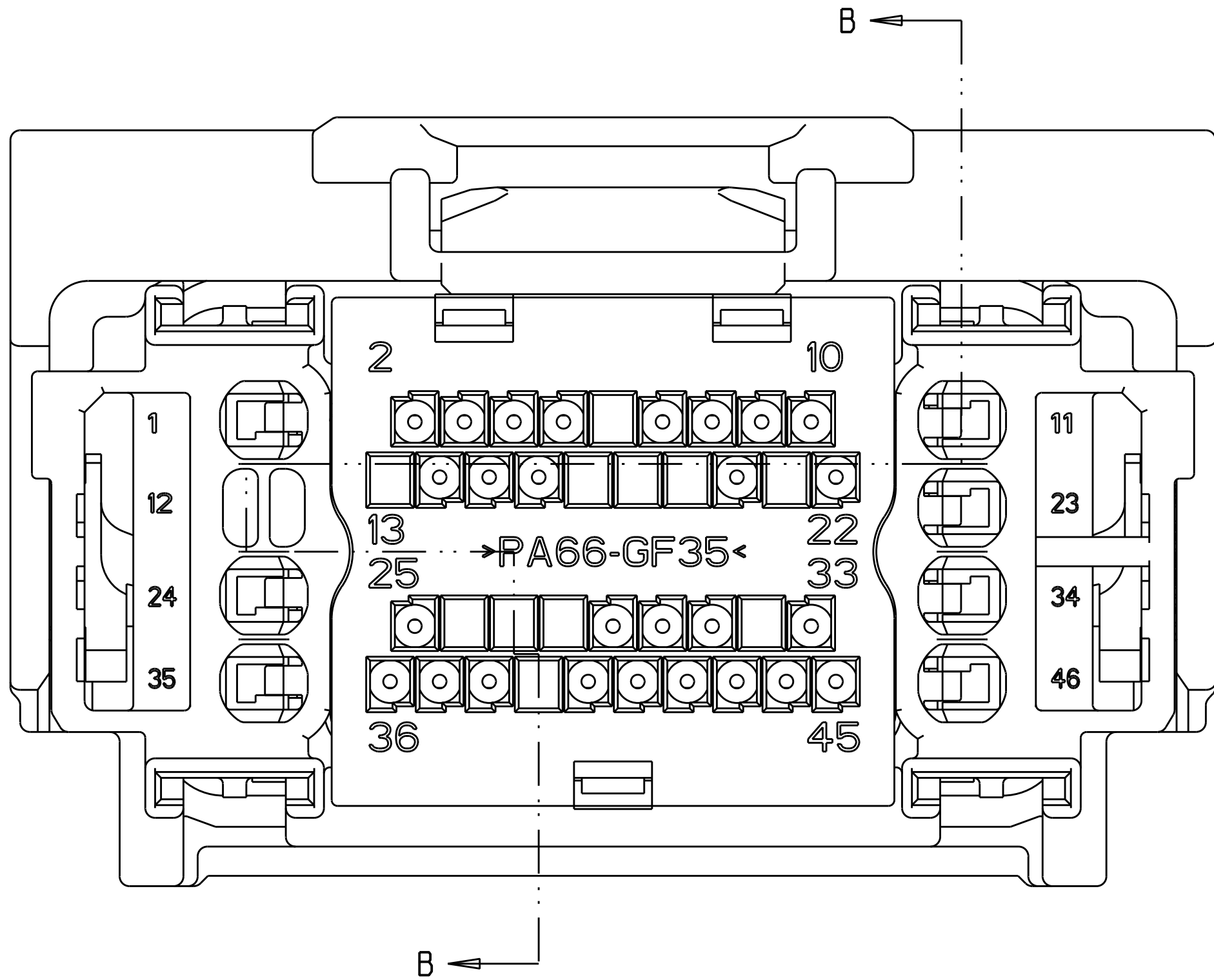
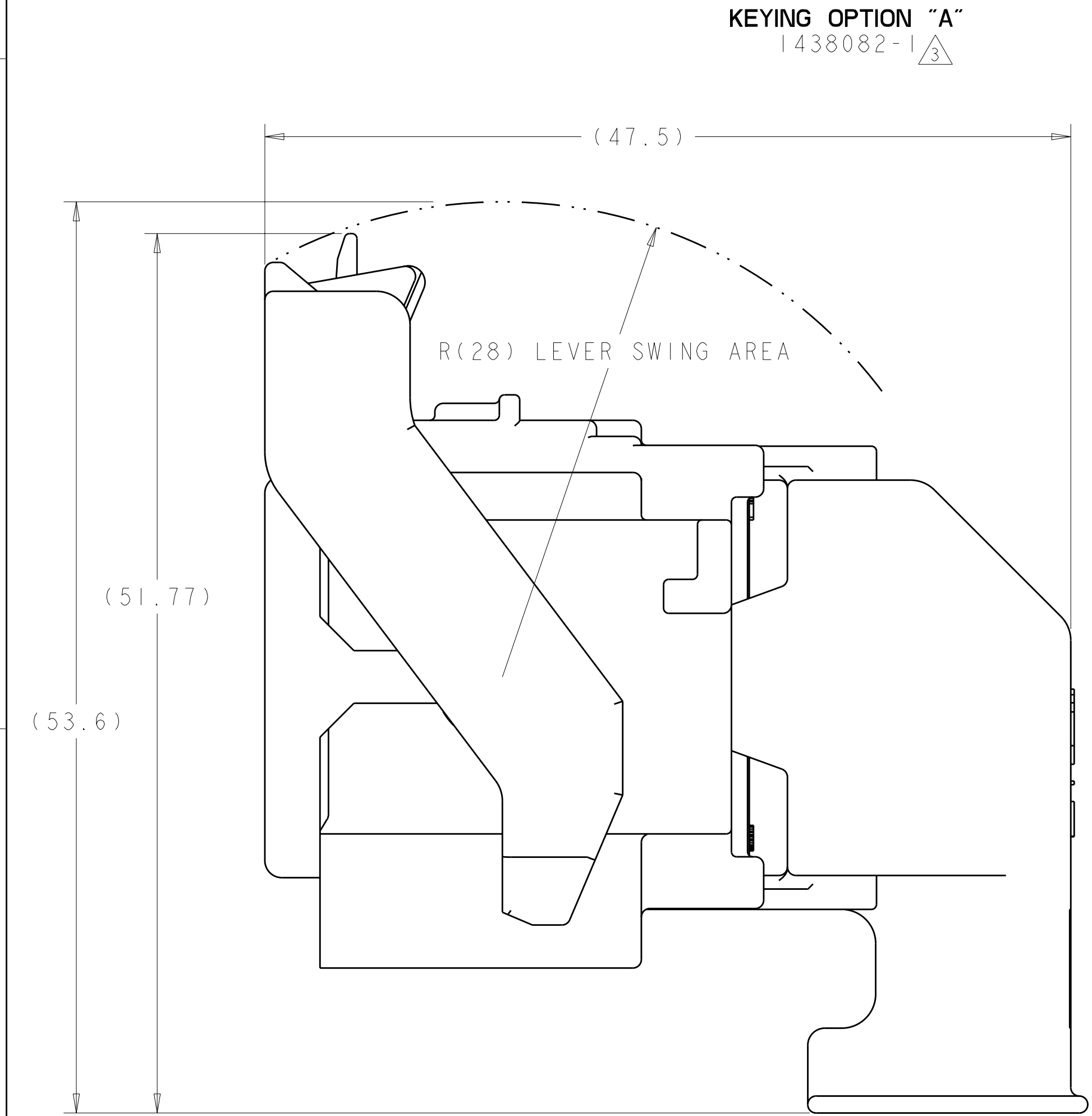


SCALE 1 : 1

KEYING OPTION "B"
1438082-2 




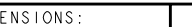
△ MATERIAL:
HARNES - 35% GLASS FILLED PA66, BLACK
ALT MAT'L: HARNES - 30% GLASS FILLED sPS, BLACK
SPACER - 40% GLASS FILLED PPS+PA66, RED
ALT MAT'L: 30% GLASS FILLED sPS, RED
ALT MAT'L: 35% GLASS FILLED PA66, RED
COVER - 35% GLASS FILLED PA66, BLACK
ALT MAT'L: COVER - 30% GLASS FILLED LCP, BLACK
CAM LEVER - 35% GLASS FILLED NYLON, GRAY
GROMMET - SILICONE, BROWN
PERIMETER SEAL - SILICONE, GREEN

2. CAM LEVER AND SPACER ARE SHIPPED IN PRE-LATCH POSITION.

③ SEE PINOUT CHART ON SHEETS 2, 3 AND 4 FOR CLOSED CIRCUIT CONFIGURATIONS.

④ CAVITIES WITH A NUMERIC SYMBOL INDICATES CLOSED TERMINAL LOCATIONS.
BLANK CAVITIES INDICATE OPEN TERMINAL HOLE LOCATIONS.

SHOWN WITH CAM LEVER AND SPACER
IN LOADED POSITION WITH
OPTIONAL WIRESHIELD

<small>1. THIS DRAWING IS THE PROPERTY OF TYCO ELECTRONICS CORPORATION. IT IS TO BE USED FOR THE MANUFACTURE OF THE PARTS SPECIFIED HEREON. IT IS NOT TO BE REPRODUCED OR COPIED FOR ANY OTHER PURPOSE WITHOUT THE WRITTEN PERMISSION OF TYCO ELECTRONICS CORPORATION.</small>		<small>DWN</small> 01AUG2003		 Tyco Electronics		Tyco Electronics Harrisburg, PA 17105-3608	
<small>DIMENSIONS:</small> mm		<small>TOLERANCES UNLESS OTHERWISE SPECIFIED:</small> 0 P L C ± .3 1 P L C ± .3 2 P L C ± .10 3 P L C ± .3 4 P L C ± .3 ANGLE ± °		<small>CHEK</small> D. STRAUSSER		<small>NAME</small> 46 WAY PCM CONNECTOR HARNESS ASSEMBLY	
		<small>APPR</small> D. STRAUSSER		<small>PRODUCT SPEC</small> -		<small>SIZE</small> A	
<small>MATERIAL</small> SEE TABLE		<small>FINISH</small> SEE TABLE		<small>APPLICATION SPEC</small> -		<small>CAGE CODE</small> 00779	
				<small>WEIGHT</small> -		<small>DRAWING NO</small> C-1438082	
				<small>CUSTOMER DRAWING</small> -		<small>RESTRICTED TO</small> -	
				<small>SCALE</small> 4:1		<small>SHEET</small> 1 of 5	
				<small>REVISION</small> 1		<small>REVISION</small> 1	

LOC	DIST	REVISIONS					
FX	00	P	LTR	DESCRIPTION	DATE	DWN	APVD
		-		SEE SHEET I	-	-	-

45	44	43	42	41		38										27											7	5				7-1438735-7	2LIT-14A464-TD-086												
	44		42			38										27											7	5				7-1438735-6	2LIT-14A464-TD-085												
45	44	43	42	41		38																				7	5	4				7-1438735-5	2LIT-14A464-TD-084												
	44		42			38																				7	5	4				7-1438735-4	2LIT-14A464-TD-083												
	44	43	42	41		38																				7	5	4				7-1438735-3	2LIT-14A464-TD-082												
	44		42			38										27						22				7	5	4				7-1438735-2	2LIT-14A464-TD-081												
	44		42			38																				7	5	4				7-1438735-1	2LIT-14A464-TD-080												
		43	42														26										7	6		4	3		7-1438735-0	2LIT-14A464-TD-079											
																	26										7	6			3		6-1438735-9	2LIT-14A464-TD-078											
	44	43	42														26									7	6		4			6-1438735-8	2LIT-14A464-TD-077												
45	44	43	42	41		38																				7	5					6-1438735-6	2LIT-14A464-TD-076												
	44		42			38																				7	5					6-1438735-5	2LIT-14A464-TD-075												
	44	43	42	41		38																				7	5					6-1438735-4	2LIT-14A464-TD-074												
	44					38										27						22			19		8	6				6-1438735-0	2LIT-14A464-TD-073												
	44					38										27						22			19		8	7	6				5-1438735-9	2LIT-14A464-TD-072											
	44																26						22			19			6				5-1438735-8	2LIT-14A464-TD-071											
	44																26						22			19		7	6				5-1438735-7	2LIT-14A464-TD-070											
	44					38										27	26						22			19			6				5-1438735-6	2LIT-14A464-TD-069											
	44					38										27	26						22			19		7	6					5-1438735-5	2LIT-14A464-TD-068										
	44																26									19		7	6					5-1438735-4	2LIT-14A464-TD-067										
	44																26									19			6					5-1438735-3	2LIT-14A464-TD-066										
		43	42														26											7	6		4				5-1438735-2	2LIT-14A464-TD-065									
																	26											7	6						5-1438735-1	2LIT-14A464-TD-064									
	44	42				38										27							22					7	5					4-1438735-6	2LIT-14A464-TD-063										
	44	42				38																						7	5						4-1438735-5	2LIT-14A464-TD-062									
	44	42				38										27	26						22			19		8	6					4-1438735-4	2LIT-14A464-TD-061										
	44	42				38										27	26						22			19		8	7	6					4-1438735-3	2LIT-14A464-TD-060									
	44																26									19		8	7	6					4-1438735-2	2LIT-14A464-TD-059									
	44																26									19			6						4-1438735-1	2LIT-14A464-TD-058									
		43	42														26											8	7	6	5					4-1438735-0	2LIT-14A464-TD-057								
																	26											8	7	6						3-1438735-9	2LIT-14A464-TD-056								
46	45	44	43									34	33	32	31		27	25						20		16	14	13	12	10	9	8	7	6		1	3-1438735-4	2LIT-14A464-TD-055							
46	45		43									34	33	32	31		27	25						20		16	14	13	12	10	9	8	7	6		1	2-1438735-7	2LIT-14A464-TD-054							
46	45	44	43	42	40						35	34	33	32	31		28						24		21	19				12		9			5	4		1	2-1438735-3	2LIT-14A464-TD-053					
	45	44	43	42	40								33	32	31		28								21	19					9				5	4			2-1438735-2	2LIT-14A464-TD-052					
	44		42			38											27	26						22					7	5							1438735-7	2LIT-14A464-TD-051							
				40	39	38					35	34											24		21		18			13	12		9	8	7	5			1438735-6	2LIT-14A464-TD-050					
	44		42			38											27	26						22											5				1438735-5	2LIT-14A464-TD-049					
	44	42				38												26						22											5				1438735-4	2LIT-14A464-TD-048					
	44	42				38												26										7	5									1438735-3	2LIT-14A464-TD-047						
	44	42				38												26																5					1438735-2	2LIT-14A464-TD-046					
	44					38											29	28						26									7				3				1438735-1	2LIT-14A464-TD-045			
46	45	44	43	42	41	40	39	38	37	36	35	34	33	32	31	30	29	28	27	26	25	24	23	22	21	20	19	18	17	16	15	14	13	12	11	10	9	8	7	6	5	4	3	2	1
TERMINAL HOLE POSITION																																		PART NUMBER				FORD PART NUMBER							
PIN-OUT CHART KEYING OPTION "B"																																													

THIS DRAWING IS UNPUBLISHED. IT IS SUBJECT TO CHANGE WITHOUT NOTICE. THE USER SHALL BE RESPONSIBLE FOR OBTAINING THE LATEST EDITION.		DWN A. HOLT 22OCT2007		Tyco Electronics Harrisburg, PA 17105-3608	
CHK S. MANKARYOS 22OCT2007		NAME A. HOLT 22OCT2007		46 WAY PCM CONNECTOR HARNESS ASSEMBLY	
APVD S. MANKARYOS		PRODUCT SPEC		RESTRICTED TO	
APPLICATION SPEC		WEIGHT -		SCALE 4:1	
MATERIAL SEE TABLE		FINISH SEE TABLE		SHEET 5 OF 5	
CUSTOMER DRAWING		REVISIONS		REV 1	

Mouser Electronics

Authorized Distributor

Click to View Pricing, Inventory, Delivery & Lifecycle Information:

[TE Connectivity:](#)

[4-1438082-8](#)