

**SPECIFICATIONS:**

STEPS PER REVOLUTION: 200	ROTOR INERTIA: 35.0 G-CM <sup>2</sup> (0.19 OZ-IN <sup>2</sup> ) REF
STEP ANGLE: 1.8°	HOLDING TORQUE: 1.6KG-CM (22.2 OZ-IN)MIN <sup>1</sup>
STEP TO STEP ACCURACY: ±5 % <sup>1</sup> , <sup>2</sup>	DETENT TORQUE: 36 G-CM (0.5 OZ-IN) MIN
POSITIONAL ACCURACY: ±5 % <sup>1</sup> , <sup>3</sup>	
HYSTERESIS: - %	INSULATION CLASS: B
WINDING RESISTANCE: 4.2 OHM ±10% AT 25° <sup>7</sup>	BEARINGS: ABEC 3, DOUBLE SHIELDED
WINDING INDUCTANCE: 2.8 mH ± 20% <sup>8</sup>	WIEGHT: 200 G (7.0 OZ) APPROXIMATE
PHASE VOLTAGE: 4.0 VDC	TEMP. RISE: 80°C MAX. <sup>9</sup>
PHASE CURRENT: .95 AMP (RATED)	OPERATING TEMP. RANGE: -10 TO 40 °C
	STORAGE TEMP. RANGE: -40 TO 70 °C
SHAFT RUNOUT: 0.013 T.I.R.	RELATIVE HUMIDITY RANGE: 5 TO 95 %
RADIAL PLAY: 0.025 MAX WITH .5KG RADIAL LOAD.	
END PLAY: 0.075 MAX WITH 1.0KG AXIAL LOAD.	

HT17-068

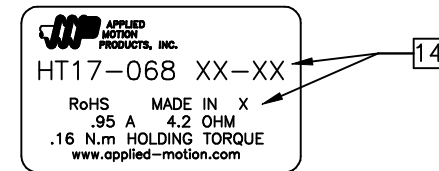
**REVISIONS**

ECO NO.	REV	DESCRIPTION	DATE	APPROVED
3847	A	INITIAL RELEASE	2-16-94	K. Kordik
3930	B	ADD HT17-068P NOTE	5-25-95	K. Kordik
5000	C	ADD "17HT33D" NOTATION		
5235	D	ADD EU COMPLIANCE NOTES	8/25/05	R. Hazelwood
5251	E	Chg HT17-068P to 17HT33P	22/11/05	R. Hazelwood
6018	F	ADD MECH DATA	10/29/09	J. Kordik
6042	G	REVISE ENCODER HOLES	12/23/09	J. Kordik
6082	H	ADD ENCODER HOLES	3/3/10	J. Kordik

NOTES, UNLESS OTHERWISE SPECIFIED:

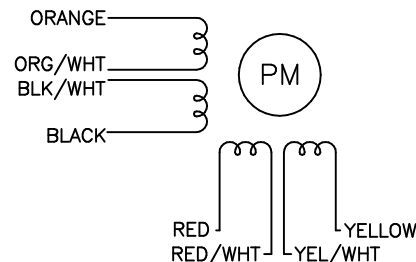
- <sup>1</sup> MEASUREMENTS MADE AT RATED CURRENT IN EACH PHASE.
- <sup>2</sup> BETWEEN ANY TWO ADJACENT STEP POSITIONS.
- <sup>3</sup> MAXIMUM ERROR IN 360°.
4. HIPOT 500 VAC FOR ONE MINUTE.
- <sup>5</sup> LEADS: 8 ,AWG 26,7 STRAND MIN.,UL AND CSA APPROVED, UL 3265.
6. INSULATION RESISTANCE: 100 MEGOHMS MIN AT 500 VDC.
- <sup>7</sup> AS MEASURED ACROSS ANY WINDING.
- <sup>8</sup> AS MEASURED ACROSS ANY WINDING USING AN A.C. INDUCTANCE BRIDGE (1 KHz).
- <sup>9</sup> AS MEASURED BY THE CHANGE IN RESISTANCE METHOD, WITH RATED VOLTAGE APPLIED TO 2 PHASES; WITH MOTOR AT REST.
10. HIGH TORQUE MOTOR DESIGN.
11. ROTOR & STATOR LAMINATION MATERIAL: 0.5mm thk, SEE AMP STD SPEC #1500-062.
- <sup>12</sup> IF DOUBLE SHAFT IS REQUIRED, ADD "D" TO END OF PART NUMBER.
13. THIS MOTOR TO BE MANUFACTURED IN COMPLIANCE WITH EU DIRECTIVE "ROHS 2002/95/EC".
- <sup>14</sup> MOTOR LABEL TO INCLUDE "ROHS" COMPLIANT, 'MADE IN (COUNTRY OF ORIGIN)' AND DATE CODE.

**LABEL DETAIL**



**SWITCHING SEQUENCE FOR CW ROTATION  
FACING MOUNTING END**

STEP	ORANGE	BLACK	RED	YELLOW
0	+	-	+	-
1	-	+	+	-
2	-	+	-	+
3	+	-	-	+
4	+	-	+	-



CONTRACT NO. CAT		APPLIED MOTION PRODUCTS, INC.			
APPROVALS	DATE	<b>STEP MOTOR OUTLINE</b>			
DRAWN	1/10/94				
CHECKED	2/16/94				
APPROVED	2/16/94				
APPROVED		B	COMPUTER DATA BASE DRAWING	DWG NO. HT17-068	REV H
APPROVED		SCALE: FULL	SHEET 1 OF 2		



# Mouser Electronics

Authorized Distributor

Click to View Pricing, Inventory, Delivery & Lifecycle Information:

[Applied Motion:](#)

[HT17-068](#)