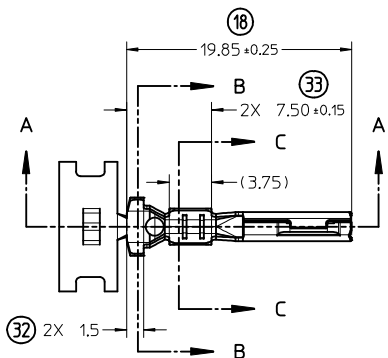
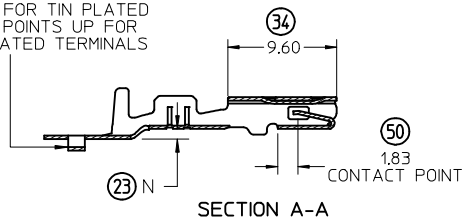
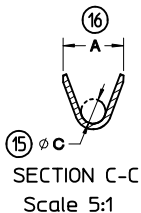
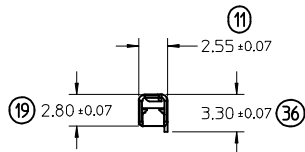
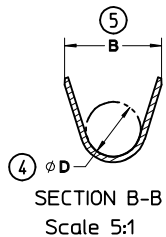


CARRIER BUMP DIRECTION
POINTS DOWN FOR TIN PLATED
TERMINALS. POINTS UP FOR
PRECIOUS PLATED TERMINALS



STAMP PLATING TYPE (Au-GOLD,
Sn-TIN) OR (Ag-SILVER) IN THIS AREA



(11,43)
PROGRESSION

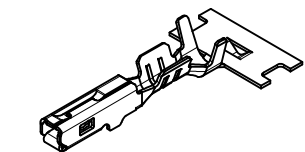
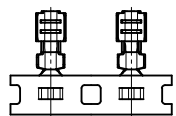


TABLE 1 - TERMINAL PART NUMBER AND DIMENSION REFERENCE

FAMILY	GENDER	SEALING	PLATING	PART NUMBER	PAYOFF DIRECTION	GRIP CODE	WIRE SIZES*	A ±0.3	B ±0.20	C ±0.3	D ±0.15	N ±0.10	SPECIAL CHARACTERISTICS	
MX150	RECEPTACLE	WIRE SEAL	Sn	34083-2003	RIGHT (B)	22	22AWG	2.5	4.85	0.9	2.90	0.55	HIGH PERFORMANCE Sn	
				34083-3003	LEFT (D)		0.35-0.50mm ²							
				34083-2002	RIGHT (B)	18	20/18AWG	3.3	5.00	1.3	2.90	0.70		
				34083-3002	LEFT (D)		0.75-1.00mm ²							
				34083-2001	RIGHT (B)	14	16/14AWG	3.6	5.00	1.7	2.90	0.90		
				34083-3001	LEFT (D)		1.50-2.00mm ²							
			Au	34081-2005	RIGHT (B)	22	22AWG	2.5	4.85	0.9	2.90	0.55	HIGH PERFORMANCE Au	
				34081-3005	LEFT (D)		0.35-0.50mm ²							
				34081-2004	RIGHT (B)	18	20/18AWG	3.3	5.00	1.3	2.90	0.70		
				34081-3004	LEFT (D)		0.75-1.00mm ²							
				34081-2003	RIGHT (B)	14	16/14AWG	3.6	5.00	1.7	2.90	0.90		
				34081-3003	LEFT (D)		1.50-2.00mm ²							
Ag	34081-4003	RIGHT (B)	22	22AWG	2.5	4.85	0.9	2.90	0.55	HIGH PERFORMANCE Ag				
	34081-5003	LEFT (D)		0.35-0.50mm ²										
	34081-4002	RIGHT (B)	18	20/18AWG	3.3	5.00	1.3	2.90	0.70					
	34081-5002	LEFT (D)		0.75-1.00mm ²										
	34081-4001	RIGHT (B)	14	16/14AWG	3.6	5.00	1.7	2.90	0.90					
	34081-5001	LEFT (D)		1.50-2.00mm ²										

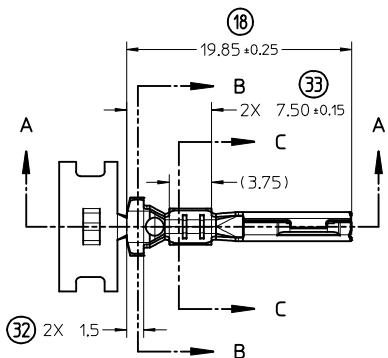
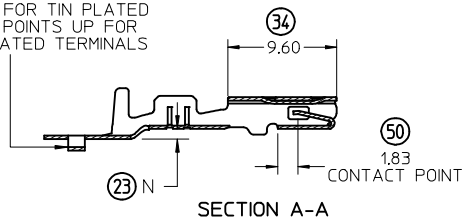
* SEE AS-34083-002 FOR SPECIFIC WIRE TYPES

NOTES: (UNLESS OTHERWISE SPECIFIED)

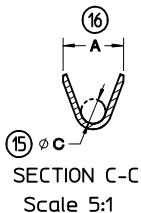
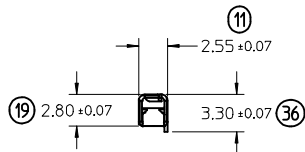
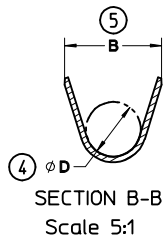
- MATING TERMINAL SHOWN ON DRAWING SD-34080-001
- MATERIAL: ASTM B422, UNS C19025, HR04
THICKNESS: 0.30 mm ±0.01
TEMPER: FULL HARD (REF)
TENSILE: 496 MIN MPA
- TIN PLATED TERMINAL FINISH
OVERALL UNDERPLATE ELECTRODEPOSITED NICKEL
OVERALL ELECTRODEPOSITED REFLOW TIN
- GOLD PLATED TERMINAL FINISH
OVERALL UNDERPLATE ELECTRODEPOSITED
DUCTILE SULFAMATE NICKEL
CONTACT AREA - ELECTRODEPOSITED GOLD
GRIP AREA - ELECTRODEPOSITED 100%
TIN MATTE FINISH
- SILVER PLATED TERMINAL FINISH
OVERALL UNDERPLATE ELECTRODEPOSITED
DUCTILE SULFAMATE NICKEL
CONTACT AREA - ELECTRODEPOSITED PURE SILVER
(0.5% MAX IMPURITIES) SEMI-
BRIGHT FINISH
- SILVER ANTI-TARNISH : EVABRITE
GRIP AREA - ELECTRODEPOSITED 100%
TIN MATTE FINISH
- MEETS PERFORMANCE SPECIFICATION FOR
CABLE TO TERMINAL ELECTRICAL CRIMPS
PER SAE/USCAR-21 (5/2002)
- MEETS PERFORMANCE STANDARD FOR
AUTOMOTIVE ELECTRICAL CONNECTOR
SYSTEMS FOR SAE/USCAR-2 REV. 4
(TEMP CLASS 3) (5/2004)
- MEETS ELECTRICAL CONNECTION SYSTEM
DESIGN SPECIFICATION (SDS) REV.11 (5/2002)
- MEETS FIELD CORRELATED LIFE TEST (FCLT) PER
SAE/USCAR-20 (6/2004)
- INSERTION FORCE WITH INLINE BLADE TERMINAL:
AVG. FORCE 3.1 N TIN (REFERENCE)
2.7 N GOLD (REFERENCE)
2.9 N SILVER (REFERENCE)
- REFERENCE FORD CAVITY SPECIFICATION
97BG-14474-ADA
- REFERENCE AS-34083-002 FOR CRIMP INFORMATION
- REFERENCE PK-31300-516 FOR REEL DIRECTION
- REFERENCE PS-34083-002 FOR PRODUCT SPECIFICATION

MINOR CORRECTIONS EC NO: UAU2014-1374 DRWNB JENNINGS01 2014/03/03 CHKD:ADHIR 2014/06/11 APPR:BMOSER 2014/06/17	QUALITY SYMBOLS ▽=0 ▽=0 ▽=0	GENERAL TOLERANCES (UNLESS SPECIFIED)		DIMENSION STYLE MM ONLY		SCALE 3:1	DESIGN UNITS METRIC	THIRD ANGLE PROJECTION		
		mm	INCH	DRAWN BY K.FERGUSON	DATE 4/14/2009	MX 150 RECEPTACLE CABLE SEAL				
		4 PLACES ± ---	± ---	CHECKED BY A. DHIR	DATE 4/14/2009					
		3 PLACES ± ---	± ---	APPROVED BY B. MOSER	DATE 4/14/2009	molex				
2 PLACES ± 0.10	± ---	MATERIAL NO. SEE TABLE		DOCUMENT NO. SD-34083-002						
1 PLACE ± 0.3	± ---	DRAFT WHERE APPLICABLE MUST REMAIN WITHIN DIMENSIONS								
0 PLACE ±	±	THIS DRAWING CONTAINS INFORMATION THAT IS PROPRIETARY TO MOLEX INCORPORATED AND SHOULD NOT BE USED WITHOUT WRITTEN PERMISSION								

CARRIER BUMP DIRECTION
POINTS DOWN FOR TIN PLATED
TERMINALS. POINTS UP FOR
PRECIOUS PLATED TERMINALS



STAMP PLATING TYPE (Au-GOLD,
Sn-TIN) OR (Ag-SILVER) IN THIS AREA



(11,43)
PROGRESSION

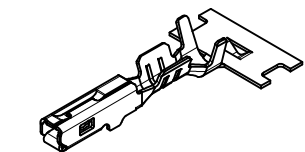
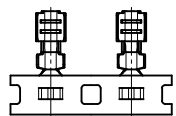


TABLE 1 - TERMINAL PART NUMBER AND DIMENSION REFERENCE

FAMILY	GENDER	SEALING	PLATING	PART NUMBER	PAYOFF DIRECTION	GRIP CODE	WIRE SIZES*	A ±0.3	B ±0.20	C ±0.3	D ±0.15	N ±0.10	SPECIAL CHARACTERISTICS	
MX150	RECEPTACLE	WIRE SEAL	Sn	34083-2003	RIGHT (B)	22	22AWG	2.5	4.85	0.9	2.90	0.55	HIGH PERFORMANCE Sn	
				34083-3003	LEFT (D)		0.35-0.50mm ²							
				34083-2002	RIGHT (B)	18	20/18AWG	3.3	5.00	1.3	2.90	0.70		
				34083-3002	LEFT (D)		0.75-1.00mm ²							
				34083-2001	RIGHT (B)	14	16/14AWG	3.6	5.00	1.7	2.90	0.90		
				34083-3001	LEFT (D)		1.50-2.00mm ²							
			Au	34081-2005	RIGHT (B)	22	22AWG	2.5	4.85	0.9	2.90	0.55	HIGH PERFORMANCE Au	
				34081-3005	LEFT (D)		0.35-0.50mm ²							
				34081-2004	RIGHT (B)	18	20/18AWG	3.3	5.00	1.3	2.90	0.70		
				34081-3004	LEFT (D)		0.75-1.00mm ²							
				34081-2003	RIGHT (B)	14	16/14AWG	3.6	5.00	1.7	2.90	0.90		
				34081-3003	LEFT (D)		1.50-2.00mm ²							
Ag	34081-4003	RIGHT (B)	22	22AWG	2.5	4.85	0.9	2.90	0.55	HIGH PERFORMANCE Ag				
	34081-5003	LEFT (D)		0.35-0.50mm ²										
	34081-4002	RIGHT (B)	18	20/18AWG	3.3	5.00	1.3	2.90	0.70					
	34081-5002	LEFT (D)		0.75-1.00mm ²										
	34081-4001	RIGHT (B)	14	16/14AWG	3.6	5.00	1.7	2.90	0.90					
	34081-5001	LEFT (D)		1.50-2.00mm ²										

* SEE AS-34083-002 FOR SPECIFIC WIRE TYPES

NOTES: (UNLESS OTHERWISE SPECIFIED)

- MATING TERMINAL SHOWN ON DRAWING SD-34080-001
- MATERIAL: ASTM B422, UNS C19025, HR04
THICKNESS: 0.30 mm ±0.01
TEMPER: FULL HARD (REF)
TENSILE: 496 MIN MPA
- TIN PLATED TERMINAL FINISH
OVERALL UNDERPLATE ELECTRODEPOSITED NICKEL
OVERALL ELECTRODEPOSITED REFLOW TIN
- GOLD PLATED TERMINAL FINISH
OVERALL UNDERPLATE ELECTRODEPOSITED
DUCTILE SULFAMATE NICKEL
CONTACT AREA - ELECTRODEPOSITED GOLD
GRIP AREA - ELECTRODEPOSITED 100%
TIN MATTE FINISH
- SILVER PLATED TERMINAL FINISH
OVERALL UNDERPLATE ELECTRODEPOSITED
DUCTILE SULFAMATE NICKEL
CONTACT AREA - ELECTRODEPOSITED PURE SILVER
(0.5% MAX IMPURITIES) SEMI-
BRIGHT FINISH
- SILVER ANTI-TARNISH : EVABRITE
GRIP AREA - ELECTRODEPOSITED 100%
TIN MATTE FINISH
- MEETS PERFORMANCE SPECIFICATION FOR
CABLE TO TERMINAL ELECTRICAL CRIMPS
PER SAE/USCAR-21 (5/2002)
- MEETS PERFORMANCE STANDARD FOR
AUTOMOTIVE ELECTRICAL CONNECTOR
SYSTEMS FOR SAE/USCAR-2 REV. 4
(TEMP CLASS 3) (5/2004)
- MEETS ELECTRICAL CONNECTION SYSTEM
DESIGN SPECIFICATION (SDS) REV.11 (5/2002)
- MEETS FIELD CORRELATED LIFE TEST (FCLT) PER
SAE/USCAR-20 (6/2004)
- INSERTION FORCE WITH INLINE BLADE TERMINAL:
AVG. FORCE 3.1 N TIN (REFERENCE)
2.7 N GOLD (REFERENCE)
2.9 N SILVER (REFERENCE)
- REFERENCE FORD CAVITY SPECIFICATION
97BG-14474-ADA
- REFERENCE AS-34083-002 FOR CRIMP INFORMATION
- REFERENCE PK-31300-516 FOR REEL DIRECTION
- REFERENCE PS-34083-002 FOR PRODUCT SPECIFICATION

MINOR CORRECTIONS EC NO: UAU2014-1374 DRAWN BY JENNINGS01 2014/03/03 CHKD:ADHIR 2014/06/11 APPR:BMOSER 2014/06/17	QUALITY SYMBOLS ▽=0 ▽=0 ▽=0	GENERAL TOLERANCES (UNLESS SPECIFIED)		DIMENSION STYLE MM ONLY		SCALE 3:1	DESIGN UNITS METRIC	THIRD ANGLE PROJECTION	
		mm	INCH	DRAWN BY K.FERGUSON	DATE 4/14/2009	MX 150 RECEPTACLE CABLE SEAL			
		4 PLACES ± ---	± ---	CHECKED BY A. DHIR	DATE 4/14/2009				
		3 PLACES ± ---	± ---	APPROVED BY B. MOSER	DATE 4/14/2009	molex			
2 PLACES ± 0.10	± ---	MATERIAL NO. SEE TABLE		DOCUMENT NO. SD-34083-002	SHEET NO. 1 OF 1				
1 PLACE ± 0.3	± ---	DRAFT WHERE APPLICABLE MUST REMAIN WITHIN DIMENSIONS							
0 PLACE ±	±	THIS DRAWING CONTAINS INFORMATION THAT IS PROPRIETARY TO MOLEX INCORPORATED AND SHOULD NOT BE USED WITHOUT WRITTEN PERMISSION							