

This drawing involves proprietary design rights of Tyco Electronics Corporation, and all design, manufacture, reproduction, use and sale rights regarding the same are expressly reserved. It is submitted for a specific purpose and the recipient by accepting this drawing, assumes custody and control and agrees to take reasonable precautions; (a) that this drawing will not be copied and reproduced, in whole or in part, or its contents revealed in any manner, or to any person except to meet the purpose for which it was delivered and (b) that any special features peculiar to this design will not be incorporated in other projects without the expressed written permission of Tyco Electronics Corporation.

REVISIONS			
EC	REV	DESCRIPTION	DATE
CPR	A	NEW RELEASE	07/21/05

NOTES: UNLESS OTHERWISE SPECIFIED.

1. PART NUMBER CHANGES AND OR DESIGN CHANGES AFFECTING ITEM INTERCHANGEABILITY REQUIRE PRIOR ELCON APPROVAL AND AUTHORIZATION BY REVISION TO THIS DRAWING.
2. MATERIALS:

INSULATORS: THERMOPLASTIC, GLASS REINFORCED, COLOR-BLACK. UL94V-0 FLAMMABILITY RATED.

COMPLIANT SIGNAL PIN: PHOSPHOR BRONZE ALLOY.

POWER CONTACTS: PHOSPHOR BRONZE ALLOY, COPPER ALLOY.

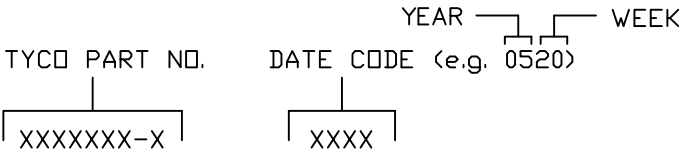
CROWN BANDS: BERYLLIUM COPPER ALLOY.

GUIDE PIN: BRASS COPPER ALLOY.
3. FINISHES:

CONTACTS: GOLD PLATED PER MIL-G-45204 TYPE II, CLASS 0, .000030" MIN. THK, OVER NICKEL PER QQ-N-290, CLASS 2, .000040" MIN. THICKNESS.

TERMINALS: TIN PLATED, MATTE FINISH .000040" MIN. THICKNESS.

GUIDE PIN: NICKEL PLATE PER AMS 2404.
4. MOUNTING FLANGES ACCEPT M3 OR NO. 4 SCREWS, (USER SUPPLIED).
5. ITEMS PROVIDED TO THIS SPECIFICATION TO BE PERMANENTLY IDENTIFIED PER THE FOLLOWING IDENTIFIER:



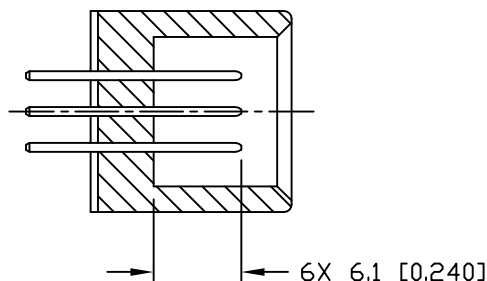
6. MODULE INFORMATION

CONNECTOR	TYCO PART NUMBER	CATALOG MODULE #	QTY	SIZE NO.	CONTACT QTY	MATING PIN	MAX. CURRENT (PER CONTACT)	CONTACT SPACING	VOLTAGE RATING*
SOCKET	6651718-1	FP0201	3	8	3	1.25 X 7.00 [.049 X .276]	35 AMPERES	7.50 [.2953]	250 VOLTS
		FP0202	2		2				
		FP0413	1	22	6	.64 [.025] SQ.	3 AMPERES	2.50 [.0984]	125 VOLTS
		FP0503	1	STRAIGHT GUIDE PIN					
		FP0500	1	LEFT MOUNTING FLANGE					

*IAW IEC-950

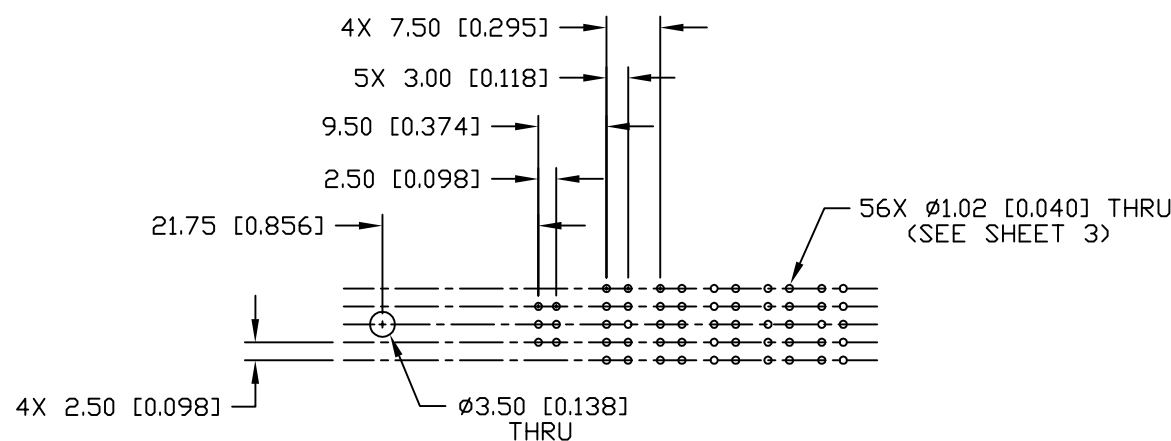
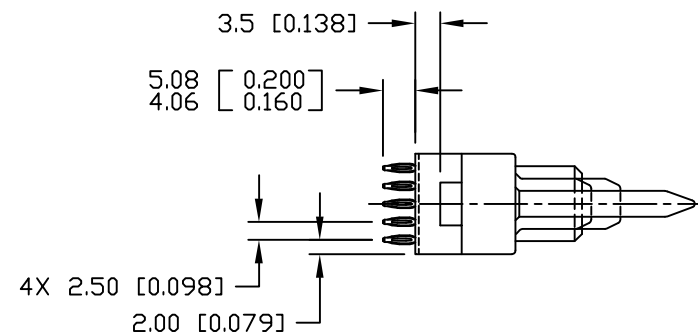
<div><div>MM OR MM [INCH]</div><div>THIRD ANGLE PROJECTION</div><div>UNLESS OTHERWISE SPECIFIED DIMENSIONS ARE IN METRIC [INCHES]</div><div>TOLERANCES</div><div>ANGLES ± .5°</div><div>DECIMALS</div><div>.XX ± .25 [.010]</div><div>.X ± .5 [.020]</div></div>	DRAWN	DATE	<div><div>tyco</div><div>Tyco Electronics Corporation</div><div>Menlo Park, Ca 94025</div></div> <div>ELCON</div>			
	R. F. A.	07/20/05	TITLE			
	CHECKED					
	APPROVED					
	APPROVED		CONNECTOR, SOCKET, STRAIGHT COMPLIANT TAILS, FLATPAQ PN 6651718-1			
D. CHAU	08/01/05					
DCA APPROVED	08/02/05	SIZE	DWG NUMBER	REV.		
M. ALIM		B	C = 6651718	A		
ACAD FILE NUMBER			C6651718A.DWG	DWG SCALE	1 = 1	SH 1 OF 3

This drawing involves proprietary design rights of Tyco Electronics Corporation, and all design, manufacture, reproduction, use and sale rights regarding the same are expressly reserved. It is submitted for a specific purpose and the recipient by accepting this drawing, assumes custody and control and agrees to take reasonable precautions; (a) that this drawing will not be copied and reproduced, in whole or in part, or its contents revealed in any manner, or to any person except to meet the purpose for which it was delivered and (b) that any special features peculiar to this design will not be incorporated in other projects without the expressed written permission of Tyco Electronics Corporation.



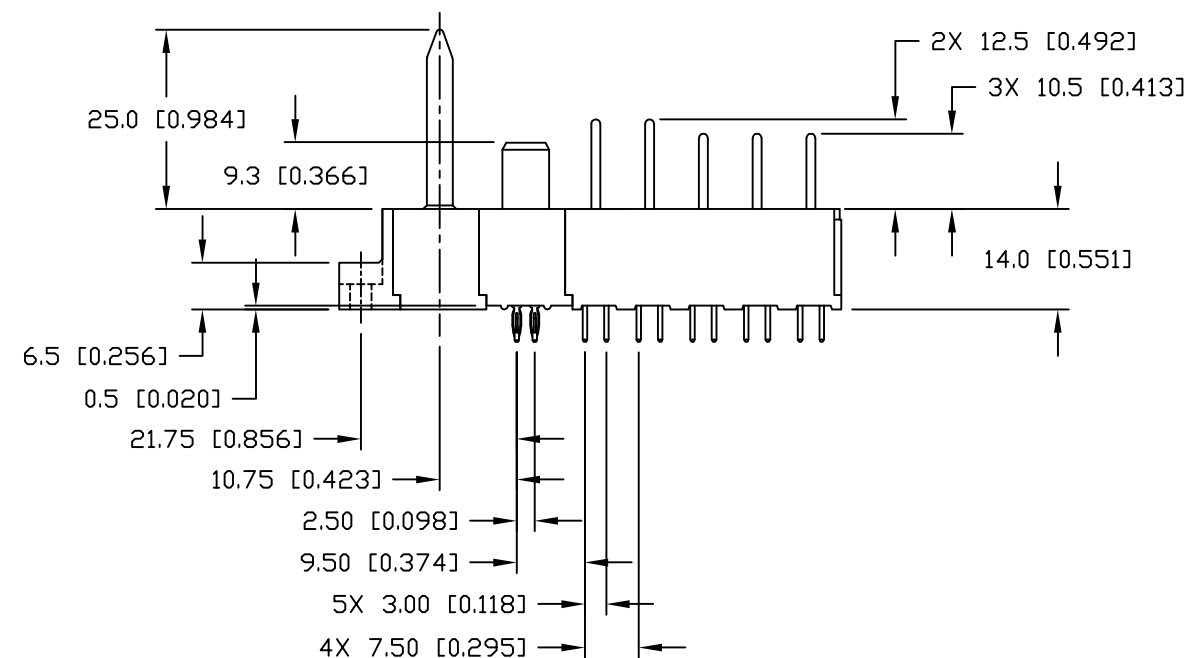
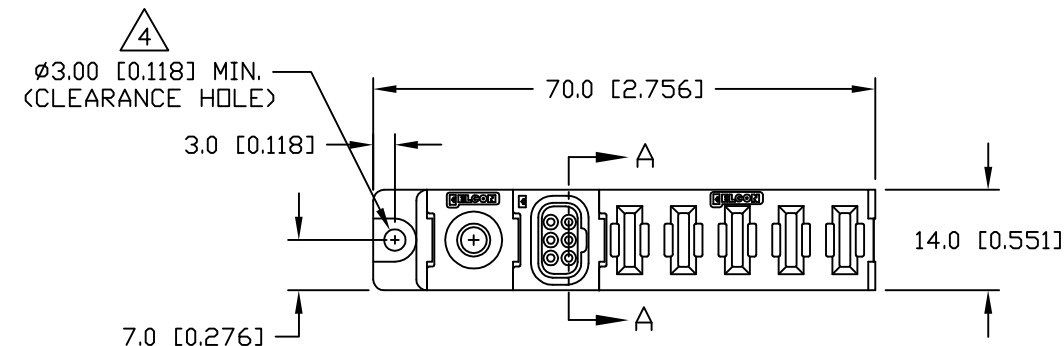
SECTION A-A

GENDER CHANGER NOT SHOWN FOR CLARITY



PRINTED CIRCUIT LAYOUT

REVISIONS			
EC	REV	DESCRIPTION	DATE
		SEE SHEET 1	



<div>MM INCH</div> <div>OR MM [INCH]</div> <div>THIRD ANGLE PROJECTION</div> <div>UNLESS OTHERWISE SPECIFIED DIMENSIONS ARE IN METRIC [INCHES]</div> <div>TOLERANCES</div> <div>ANGLES \pm .5°</div> <div>DECIMALS</div> <div>.XX \pm .25 [.010]</div> <div>.X \pm .5 [.020]</div>	DRAWN R. F. A.	DATE 07/20/05	<div>tyco Tyco Electronics Corporation Electronics Menlo Park, Ca 94025</div> <div>ELCON</div>	
	CHECKED			
	APPROVED		TITLE CONNECTOR, SOCKET, STRAIGHT COMPLIANT TAILS, FLATPAQ PN 6651718-1	
	APPROVED			
	D. CHAU	08/01/05	SIZE B	DWG NUMBER C = 6651718
	DCA APPROVED	08/02/05		REV. A
	M. ALIM			
ACAD FILE NUMBER		C6651718A.DWG		DWG SCALE 1=1
				SH 2 OF 3

This drawing involves proprietary design rights of Tyco Electronics Corporation, and all design, manufacture, reproduction, use and sale rights regarding the same are expressly reserved. It is submitted for a specific purpose and the recipient by accepting this drawing, assumes custody and control and agrees to take reasonable precautions; (a) that this drawing will not be copied and reproduced, in whole or in part, or its contents revealed in any manner, or to any person except to meet the purpose for which it was delivered and (b) that any special features peculiar to this design will not be incorporated in other projects without the expressed written permission of Tyco Electronics Corporation.

P.C. BOARD
SURFACE REF

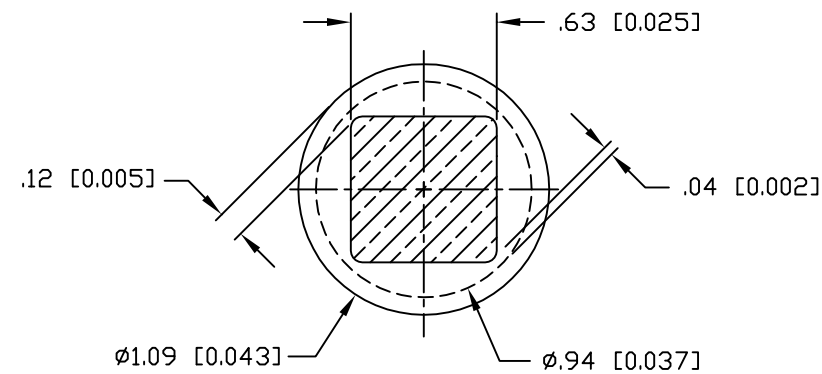
5.08 [0.200]
4.06 [0.160]

COMPLIANT PIN DETAIL

INSERTION/EXTRACTION FORCES

MAXIMUM PUSH-IN: 133.3N PER PIN
[30 LBS]

MINIMUM PUSH-OUT: 44.4N PER PIN
[10 LBS]



SOLDER TERMINATION AREA

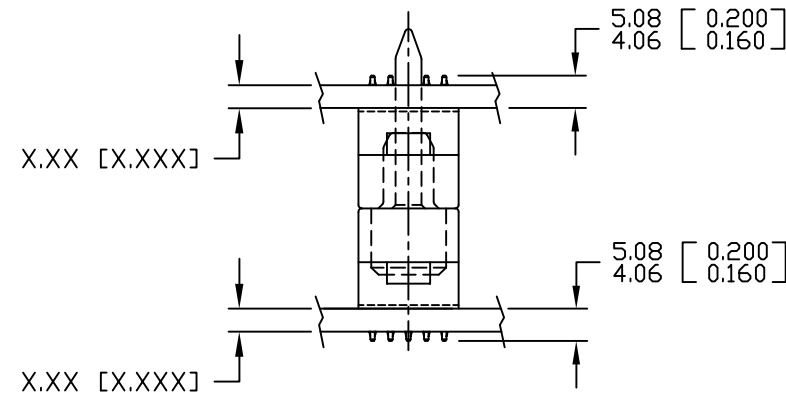
RECOMMENDED PRINTED CIRCUIT HOLE

FINISHED HOLE: $\varnothing 1.02$ [0.040] ± 0.08 [0.003]

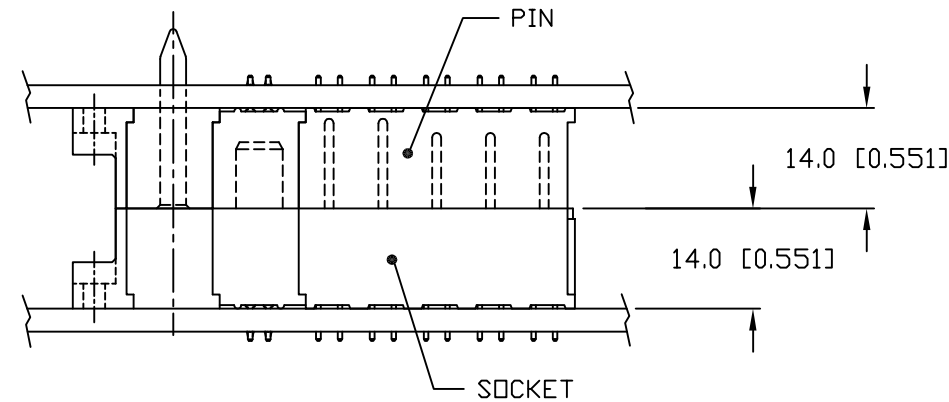
DRILLED HOLE: $\varnothing 1.15$ [0.0453] ± 0.013 [0.0005]

COPPER PLATE: .025 [0.0010] MINIMUM (PER SURFACE)

TIN PLATE: .008 [0.0003] MINIMUM (PER SURFACE)



MATED CONDITION



<div>MM INCH</div> <div></div> <div>THIRD ANGLE PROJECTION</div> <div>UNLESS OTHERWISE SPECIFIED DIMENSIONS ARE IN METRIC [INCHES]</div> <div>TOLERANCES</div> <div>ANGLES $\pm .5^\circ$</div> <div>DECIMALS</div> <div>.XX $\pm .25$ [.010]</div> <div>.X $\pm .5$ [.020]</div>	DRAWN R. F. A.	DATE 07/20/05	<div>tyco Tyco Electronics Corporation Electronics Menlo Park, Ca 94025</div> <div>ELCON</div>	
	CHECKED		TITLE USER INFORMATION COMPLIANT TAIL TERMINATION AND MATED CONDITION	
APPROVED			SIZE B	DWG NUMBER C = 6651718
APPROVED D. CHAU	08/01/05			REV. A
DCA APPROVED M. ALIM	08/02/05			
ACAD FILE NUMBER	C6651718A.DWG		DWG SCALE	1 = 1
			SH	3 OF 3

Mouser Electronics

Authorized Distributor

Click to View Pricing, Inventory, Delivery & Lifecycle Information:

[TE Connectivity:](#)

[6651718-1](#)