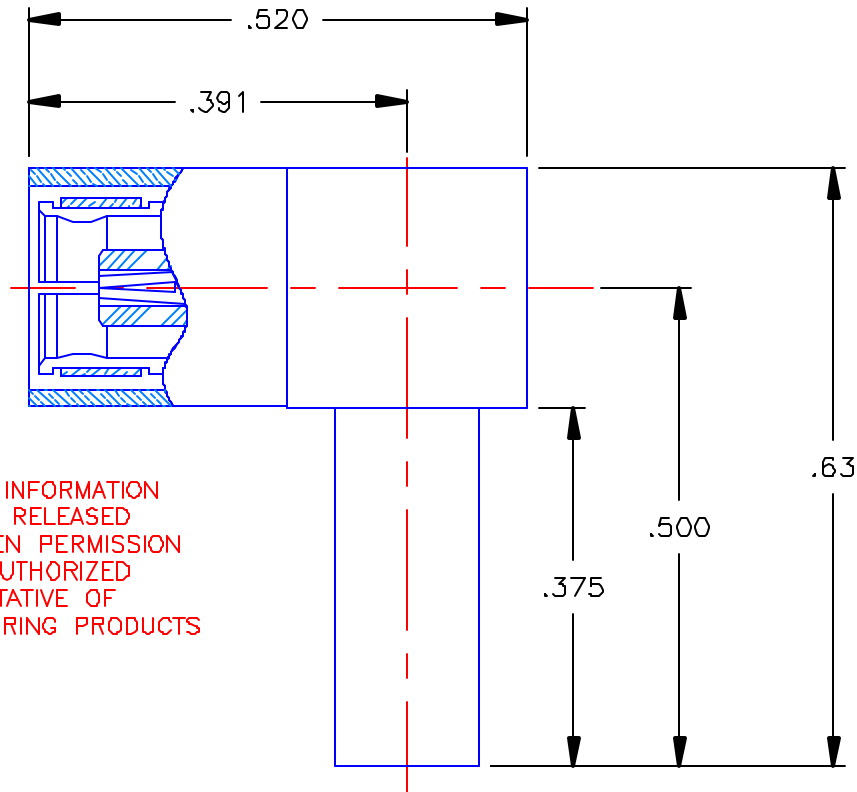


2105-1521-019

REVISIONS

| REV | DESCRIPTION | DATE | APPROVED |
|-----|-------------|----------|----------|
| A | ECO #4123 | 05/18/01 | D.N. |



PROPRIETARY INFORMATION
NOT TO BE RELEASED
WITHOUT WRITTEN PERMISSION
FROM AN AUTHORIZED
REPRESENTATIVE OF
APPLIED ENGINEERING PRODUCTS

NOTES: CONFORMS TO MIL-PRF-39012 SMB SERIES

MATERIAL:

1. INSULATORS = TEFLON, VIRGIN WHITE PER ASTM D1710, GRADE 1, TYPE I, CLASS "A".
2. CONTACT & SPRING = BERYLLIUM COPPER PER ASTM B196, ALLOY C17300, TEMPER TD04.
3. CRIMP SLEEVE = SEAMLESS COPPER TUBE PER ASTM B75, TYPE C12000, TEMPER: LIGHT ANNEAL O50.
4. ALL OTHER METAL PARTS = BRASS PER ASTM B16, ALLOY C36000, TEMPER H02.

FINISHES:

1. CONTACT = GOLD PLATE PER MIL-G-45204, TYPE II, CLASS 1, GRADE C, OVER .00010 TO .00020 STRESS FREE SULFAMATE NICKEL PER QQ-N-290.
2. ALL OTHER METAL PARTS = GOLD PLATE PER MIL-G-45204, TYPE II, CLASS 0, GRADE C, OVER .00010 TO .00020 COPPER STRIKE PER MIL-C-14550.

UNLESS OTHERWISE SPECIFIED
DIMENSIONS ARE IN INCHES
TOLERANCES ON

DWN: DATE
D.N. 05/18/01

CHKD: DATE
A.M. 05/18/01

APVD: DATE
D.J.C. 05/18/01



APPLIED ENGINEERING PRODUCTS

104 John W. Murphy Dr.
New Haven, CT 06513

SMB FEMALE RIGHT ANGLE
CABLE PLUG, FOR USE
WITH RD-316 CABLE

| | | | | | |
|-----------|-----------|-------|----------|---------------|--------------|
| MATERIAL: | FINISH: | SIZE | FSCM NO. | DWG NO. | REV |
| SEE NOTES | SEE NOTES | A | 19505 | 2105-1521-019 | A |
| | | SCALE | 5:1 | CADFILE | SHEET 1 OF 1 |
| | | | | 2105-1521-019 | |

Mouser Electronics

Authorized Distributor

Click to View Pricing, Inventory, Delivery & Lifecycle Information:

Radial:

[2105-1521-019](#)