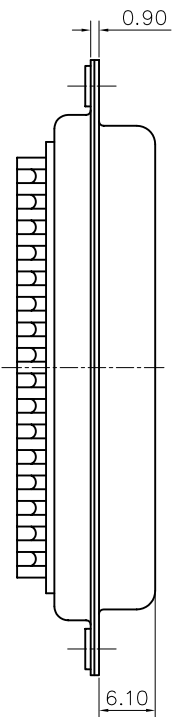
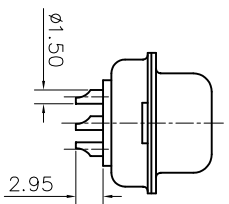
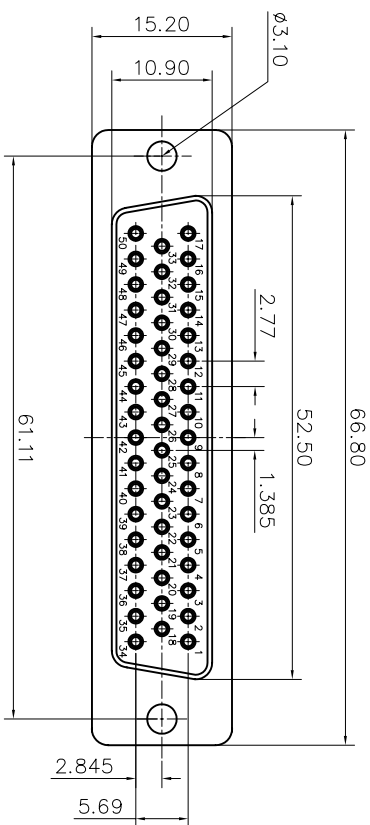


This document is the property of Amphenol Corporation and is delivered on the express condition that it is not to be disclosed, reproduced or used, in whole or in part, for any purpose other than that for which it was prepared by Amphenol Corporation without its prior consent, and that no right is granted to disclose or to use any information in this document.



Customer drawing

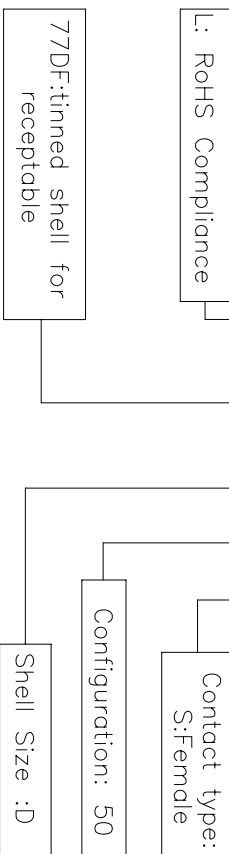
REVISIONS				
S/N	ECN	DESCRIPTION	DATE	APPROVED
1		Release manufacturing drawing	01/02/08	IP

D-SUB TECHNICAL DATA

SHELL : Steel 2.5um (100u") min tin over 1.25um (50u") min nickel
 BODY : Glass filled thermoplastic.
 Flame retardant to UL94 V-0 Color Black
 CONTACTS : Copper alloy
 0.4um (15u") min gold over 1.25um (50u") min nickel
 ELECTRICAL : Voltage rating : 1000 V RMS at 50 Hz
 Current rating 7.5A.
 Insulation resistance >5000 M Ohms
 Contact resistance 20 mOhms max.
 CLIMATIC : Temperature range -55 °C up to 125°C.
 Damp heat 56 days(40 °C-95% HR)
 MARKING : Amphenol...(Series No.)
 Commercial reference
 Manufacturing date

PRODUCT CODE

L 77DF D 50 S



DIMENSIONS SPECIFIED		APPROVAL		DATE	
TOLERANCES	U.S.	DRAWN	Checked and	by	02/08
	METRIC	CHECKED	10k. verified	by	02/08
			CHECKED		
X	+/-				
XX	+/-				
XXX	+/-				
FRACTIONS	+/-				
ANGLES	+/-				
S					
FOR MATERIALS AND FINISHES		DRAWING FILE : M77DFD50S			
SEE REMOTE SHARP EDGES		ANGLE OF PROJECTION			
DIMENSIONS		FIRST ANGLE			
TOLERANCES		SCALE			
NONE		NONE			
MATERIAL		SHEET 1 OF 1			
TITLE		Machined contacts connector, DF series			
SIZE		DRAWING NO.		REV.	
A4		M L77DFD50S		1	

Mouser Electronics

Authorized Distributor

Click to View Pricing, Inventory, Delivery & Lifecycle Information:

Amphenol:

[L177DFD50SOL2](#) [17-DB25P](#) [17-DB25S](#) [17-DD50P](#) [17D-A15PC](#) [L177DD50PC](#) [L177DFE09SV](#)
[L177DFEH09SOL2RM5](#) [L177DFEH09SAM4](#) [L177DB25S](#) [L177DC37S](#) [L177DCF37S](#) [L177DD50S](#) [L177DE09S](#)
[L177DFA15S](#) [L177DFA15SAM4B](#) [L177DFAH15S](#) [L177DFAH15SU](#) [L177DFB25S](#) [L177DFB25SAJ4](#)
[L177DFB25SAM4B](#) [L177DFB25SAM4BVF2](#) [L177DFB25SOL2](#) [L177DFB25SU](#) [L177DFBF25SA4](#) [L177DFBH25S](#)
[L177DFBH25SAM4](#) [L177DFBH25SU](#) [L177DFC37S](#) [L177DFC37SAJ4](#) [L177DFC37SC](#) [L177DFC37SF179A](#)
[L177DFC37SOL2](#) [L177DFD50S](#) [L177DFD50SF179A](#) [L177DFE09SAJ4](#) [L177DFE09SAM4B](#)
[L177DFE09SAM4BRM6VFM](#) [L177DFE09SOL2](#) [L177DFE09SU](#) [L177DFEF09S](#) [L177DFEH09SF179](#) [L177DFEH09SU](#)
[L177DA15PAM4](#) [L177DA15PC309](#) [L177DA15PST](#) [L177DB25PC309](#) [L177DB25PST](#) [L177DB25PST1](#)
[L177DB25PST2](#) [L177DB25PST3](#) [L177DB25PST4](#) [L177DD50PC309](#) [L177DD50PT](#) [L177DEG09POL2](#)
[L177DEH09POL2](#) [L177DFA15P](#) [L177DFC37PU](#) [L177DFD50PU](#) [L177DFB25SAM4RM6VF2](#) [L177DFDG50SAJ4](#)
[L177DFAH15S0L2RM5](#) [L177DFE09SAJ4RM6VF](#) [L177DFAF15S](#) [17-DA15S-U](#) [17-DA15S](#) [L177DFAH15SAM4](#)
[L177DFEH09S](#) [L177DFAH15SOL2RM5](#) [L177DFCH37SAM4](#) [L177DFCH37SU](#) [L177DA15S](#) [177DFAH15SOL2RM5](#)
[L177DCH37S1AMN](#) [L177DE09SAJ4](#) [L177DE09SST1](#) [L177DE09SST4](#) [L177DFA15S1APN](#) [L177DFAF15ST](#)
[L177DFAG15S](#) [L177DFAG15S1APN](#) [L177DFB25S1APN](#) [L177DFB25SAZ4RM6](#) [L177DFBF25SC](#)
[L177DFBH25S1AMN](#) [L177DFBH25SURM8](#) [L177DFC37P1AMNVF2](#) [L177DFC37SARM6VF](#) [L177DFCF37S](#)
[L177DFCH37S1AMN](#) [L177DFDH50SOL2RM8](#) [L177DFE09S1AMN](#) [L177DFE09S1APN](#)
[L177DFE09SAM4B4FRM6R775](#) [L177DFE09ST](#) [L177DFEG09S1APN](#) [L177DFEG09SURM5](#)
[L177DFEH09S1AMNRM6](#) [L177DFEH09SAM4RM6](#) [L177DFEH09SAZ4](#)