

PROJ. NR. C-3-1579007-1

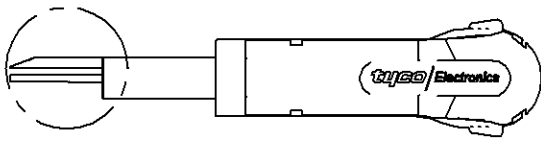
PASSMANN	ABMESS

PROJECT NO. 1 USED ON

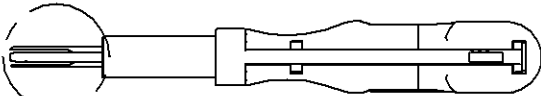
THIS DRAWING IS A CONTROLLED DOCUMENT FOR THE PURPOSES OF THE ISO 9001 CERTIFICATION AND THE CONTROLLED DOCUMENTS MANAGEMENT SYSTEM. IT SHALL BE CONTROLLED FOR THE LATEST REVISION.

DIESES ZEICHNUNGSDOKUMENT IST EIN DURCH IVP INCORPORATED KONTROLLIERTES DOKUMENT FÜR DIE DURCHFÜHRUNG DER ISO 9001 ZERTIFIZIERUNG UND DES KONTROLLIERTEN DOKUMENTENMANAGEMENTSYSTEMS. ES WIRD FÜR DIE NEUESTE AUSGABE KONTROLLIERT.

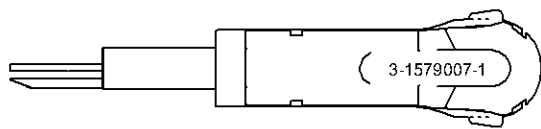
THIS DRAWING IS A CONTROLLED DOCUMENT FOR THE PURPOSES OF THE ISO 9001 CERTIFICATION AND THE CONTROLLED DOCUMENTS MANAGEMENT SYSTEM. IT SHALL BE CONTROLLED FOR THE LATEST REVISION.



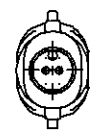
A



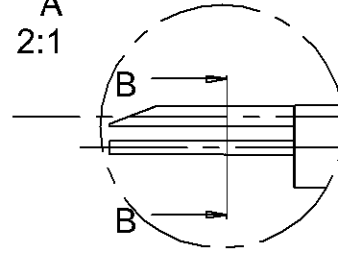
C



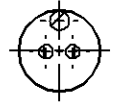
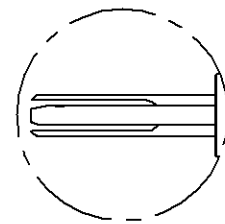
3-1579007-1



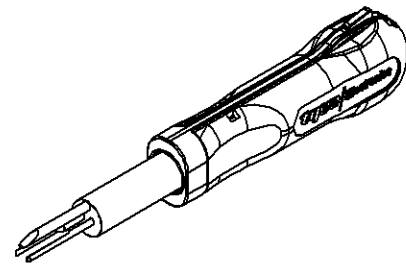
A  
2:1



C  
2:1



B-B  
2:1



**FOR CONTACTS / HOUSINGS:**  
SPT ( in relay holder )

PREZISANSTOLERANZEN NACH DIN 7168 (Werte in mm)  
1) Abweichung von DIN 7168 2) Länge des Kennlinien-Schrittels

NENNMASS	0,5	3	6	30	120	400
BEREICH 1) BIS	3	6	30	120	400	1000
UNGENAUIGKEITEN	±0,01	±0,02	±0,03	±0,04	±0,05	±0,06
MASS	MITTEL	±0,1	±0,2	±0,3	±0,5	±0,8
RADIEN U. FASEN	±0,2	±0,3	±1	±2	±4	±4
WINKELABMASSE 1) 2)	±1'	±1'	±30'	±30'	±10'	±5'

GENERAL TOLERANCES ACC. TO DIN 7168 (VALUES IN mm)  
1) DEVIATING FROM DIN 7168 2) LENGTH OF SHORT ANGLE SIZE

LOC	-	-	-
AI	-	-	-
DIST	-	-	-

TEIL (IN BEREICH X... MIT PRÜFSTRICH NR. <-) NUR GEZ.,  
REVISION-STATUS UND LÖSUNGSMÖGLICHKEITEN. GEGENWÄRTIG CORRECT  
PART TO BE MARKED WITH PRÜFSTRICH NR. <-) AS SHOWN,  
REV. STATUS AND VARIANTS MARKED ON AREA X...

ÖBERFLÄCHENVERGLEICHSTABELLE

Ra	1,6	3,2	6,3	12,5	25	50	100
Rz	10	20	40	80	160	320	640

ALLE UNKANTIGE KANTEN 0,2x45° ENTGRATEN  
REMOVE BURRS, BREAK SHARP EDGES 0,2x45°

P	LTR	REVISION RECORD	DATE	DWN	APVD
A	ECN EGC0-0000-00		00.00.2000	-	-

FINISH	DWN	06.11.2006	MATERIAL		HEAT TREAT	
DIMENSIONS	CHK	m. Dearson				
mm	APVD					
TOLERANCES UNLESS OTHERWISE SPECIFIED	NAME	EXTRACTION TOOL				
h. ISO 8015	SCALE	1:1	SIZE	A3	DRAWING NO	C-3-1579007-1
h. ISO 2768	SIZE				SHEET	1 of 1
h. DIN 7180	REV				REV	A
0 PLC						
1 PLC						
2 PLC						
3 PLC						
4 PLC						

Gewicht / Weight	0,000kg
tyco Electronics	tyco Electronics AMP GmbH D - 64625 Bensheim

D  
C  
B  
A

# Mouser Electronics

Authorized Distributor

Click to View Pricing, Inventory, Delivery & Lifecycle Information:

[TE Connectivity:](#)

[3-1579007-1](#)