

SAFETY ORGANIZATIONS

THIS FILTER HAS BEEN FORMALLY RECOGNIZED, CERTIFIED OR APPROVED BY THE LISTED AGENCY. THEREFORE, ALL TEST REQUIREMENTS SPECIFIED IN THE LATEST REVISION OF THE FOLLOWING AGENCY STANDARDS HAVE BEEN MET:

UL RECOGNIZED: UL 1283
 CSA CERTIFIED: CSA C22.2, # 8
 VDE APPROVED: EN 60939-2

OPERATING SPECIFICATIONS

LINE CURRENT/VOLTAGE: 10 AMP, 120/250 VAC,
 10 AMP/40°C, 250 VAC

LINE FREQUENCY: 50-60Hz

MAXIMUM LEAKAGE CURRENT,
 EACH LINE TO GROUND: 0.25 mA @ 120V 60Hz
 0.50 mA @ 250V 50Hz

OPERATING AMBIENT TEMP. RANGE: -10°C TO +40°C @ RATED CURRENT, I_r .

IN AN AMBIENT, T_a , HIGHER THAN 40°C, THE MAXIMUM OPERATING CURRENT, I_o , IS AS FOLLOWS:

$$I_o = I_r \sqrt{\frac{85 - T_a}{45}}$$

RELIABILITY SPECIFICATIONS:

STORAGE TEMPERATURE: -40°C TO +85°C
 HUMIDITY: 21 DAYS @ 40°C 95% RH.
 CURRENT OVERLOAD TEST: 6 TIMES I_r FOR 8 SECONDS

TEST SPECIFICATIONS:

INDUCTANCE: 0.35 mH NOMINAL
 CAPACITANCE: (MEASURED @ 1KHz, 0.250VAC MAX., 25°C±1°C)
 LINE TO GROUND: 0.0058 µF ±20%
 LINE TO LINE: 0.0485 µF ±20%
 DISCHARGE RESISTOR: 1.5 MΩ
 L/G AND L/L I.R.
 NO DISCHARGE RESISTOR: 6000MΩ (MIN.) @ 100VDC, 20°C AND 50% RH

RECOMMENDED RECEIVING INSPECTION HIPOT:

LINE TO GROUND: 1500VAC OR 2250VDC FOR 1 MINUTE
 LINE TO LINE: 1450VDC FOR 1 MINUTE

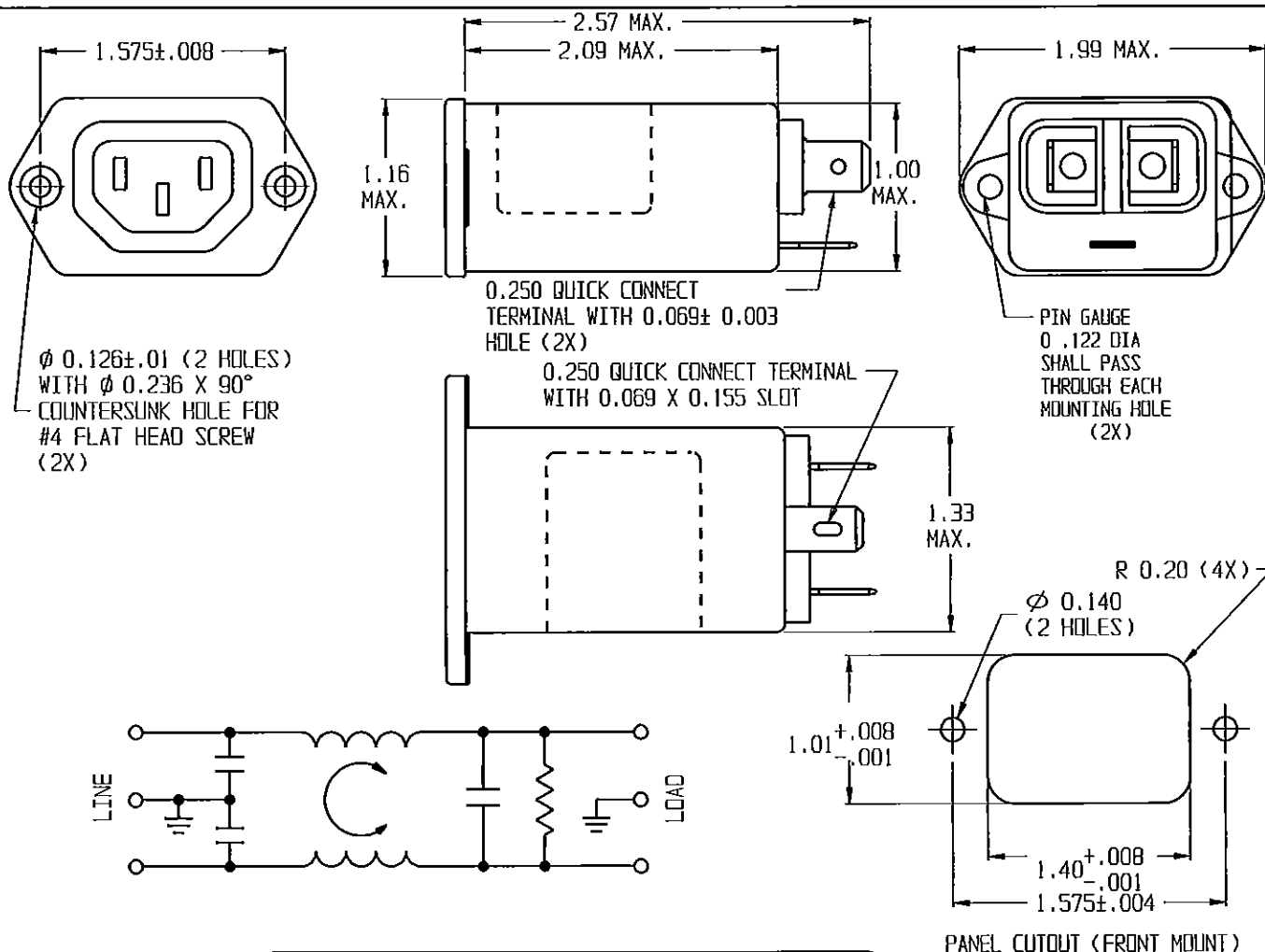
FILTER APPROVAL:

THE BEST WAY TO SELECT AND QUALIFY A FILTER IS FOR YOUR ENGINEERING TO TEST THE UNIT IN YOUR EQUIPMENT.

CUSTOMER DRAWING

CATALOG # 10EBF1

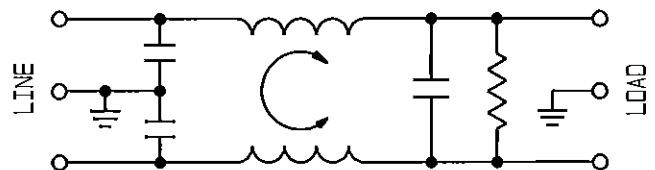
FCN #	APPRVD.	DATE
13-019328	TAM	10DEC13



Ø 0.126±.01 (2 HOLES)
 WITH Ø 0.236 X 90°
 COUNTERSUNK HOLE FOR
 #4 FLAT HEAD SCREW
 (2X)

0.250 QUICK CONNECT
 TERMINAL WITH 0.069± 0.003
 HOLE (2X)
 0.250 QUICK CONNECT TERMINAL
 WITH 0.069 X 0.155 SLOT

PIN GAUGE
 0.122 DIA
 SHALL PASS
 THROUGH EACH
 MOUNTING HOLE
 (2X)



PANEL CUTOUT (FRONT MOUNT)

THIS FILTER LINE AND LOAD ARE REVERSED; THE SOCKET IS LOAD.

50Ω- 50Ω (MINIMUM) INSERTION LOSS										THIRD ANGLE PROJECTION		TE Connectivity CORCON PRODUCTS, 620 S. BUTTERFIELD RD., MUNDLEIN IL 60090					
FREQUENCY MHz	.05	.10	.15	.50	1	3	5	10	30		UNLESS OTHERWISE SPECIFIED, TOLERANCE TO BE ±.025 MATERIAL & FINISH: AS SUPPLIED		CUSTOMER DRAWING 10EBF1				
COMMON dB	1	3	5	14	20	-	32	38	47		THIS INFORMATION IS CONFIDENTIAL AND PROPRIETARY TO TYCO ELECTRONICS CORPORATION AND ITS WORLDWIDE SUBSIDIARIES AND AFFILIATES. IT MAY NOT BE DISCLOSED TO ANYONE OTHER THAN TYCO ELECTRONICS PERSONNEL, WITHOUT WRITTEN AUTHORIZATION FROM TYCO ELECTRONICS CORPORATION, HARRISBURG, PENNSYLVANIA USA		TYCO ELECTRONICS PART NO. 6609018-7	SCALE: NTS	DATE: 05DEC08	CATALOG NO. 10EBF1	REV. B
DIFF. dB		1	2	10	16	19	19	39	40			DRW. BY: PJD	DRWG: PJD				

Mouser Electronics

Authorized Distributor

Click to View Pricing, Inventory, Delivery & Lifecycle Information:

[TE Connectivity:](#)

[10EBF1](#)