

注記 NOTES

- △ ウエハの \varnothing から隣接するピンの \varnothing までの位置を示す。
SHOW POSITION FROM \varnothing OF WAFER
TO \varnothing OF ADJACENT PIN.
2. 嵌合相手 : 51102, 51103 シリーズ
MATES WITH : 51102, 51103 SERIES.
- △ 3極以上のキンク形状は両サイドが (A)、その他の極はすべて (B) 形状とする。
KINK FORM
MORE THAN 2 CURCUIT:
PINS AT BOTH ENDS ARE KINK FORMED TO (A),
THE OTHER PINS ARE KINK FORMED TO (B).

基板取付穴推奨寸法 (マウント面)
RECOMMENDED P.C. BOARD HOLE DIMENSION
(MOUNTING SIDE)
($t=1.6$)

2極
2 CKT.
ロック形状図
LOCK CONFIGURATION

2極の場合
IN CASE OF 2CKT.

断面 H-H
SECT. H-H

RED	19.9	7.5	18.2	15	53388-0312	3
	34.9	7.5	33.2	30	53388-0510	5
NATURAL	27.4	3.75	25.7	22.5	53388-0410	4
	19.9	7.5	18.2	15	53388-0310	3
COLOR	D	C	B	A	MATERIAL NO.	極数 NO. OF CKTS.

7.5 WIRE TO BOARD CONN.
WAFER ASSY
-LEAD FREE-

molex

SEE CHART

SD-53388-**10

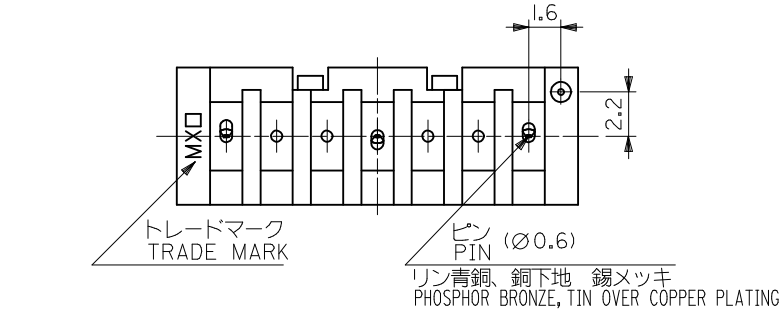
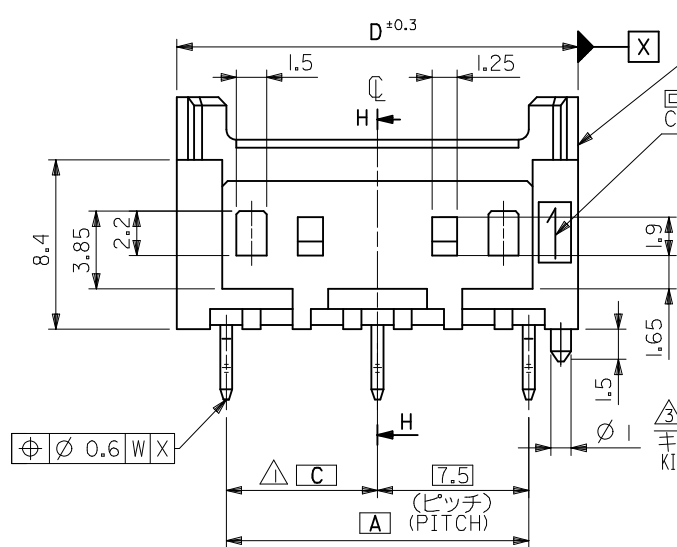
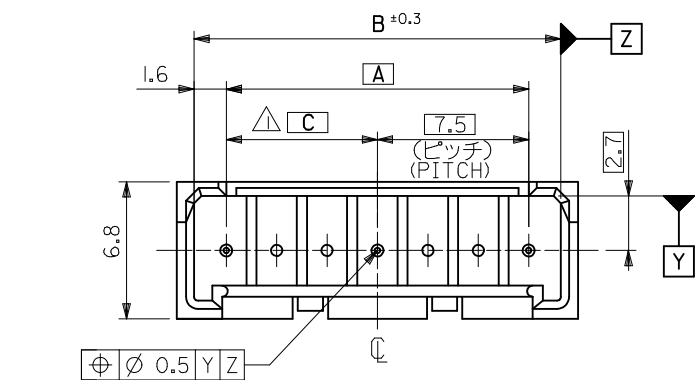
SHEET NO.

1 OF 1

THIS DRAWING CONTAINS INFORMATION THAT IS PROPRIETARY TO MOLEX ELECTRONIC TECHNOLOGIES, LLC AND SHOULD NOT BE USED WITHOUT WRITTEN PERMISSION

REVISED	EC NO: J2017-0525	DRAWN:SSAT002	2017/04/13	CHKD:AIDA	2017/04/13	APPR:TKANEKO	2017/04/14	DESCRIPTION	GENERAL TOLERANCES (UNLESS SPECIFIED)		
									0.25 UNDER	UNDER	±
									0.25 OVER	0.5 UNDER	±
									0.5 OVER	1.0 UNDER	±
									1.0 OVER	10 UNDER	± 0.2
									10 OVER	30 UNDER	± 0.25
									30 OVER		± 0.3
ANGULAR			±3 °								
DRAFT WHERE APPLICABLE MUST REMAIN WITHIN DIMENSIONS											

REVISED	EC NO.	DATE	DESCRIPTION
1	J2017-0525	2017/04/13	DRWN: SAT002
2		2017/04/13	CHKD: AIDA
3		2017/04/14	APPR: KANEKO



Mouser Electronics

Authorized Distributor

Click to View Pricing, Inventory, Delivery & Lifecycle Information:

Molex:

[53388-0310](#) [53388-0410](#)