

SPRING-LOADED CONNECTORS

SERIES 319, 330 • .100" GRID TARGET CONNECTORS FOR SPRING-LOADED ASSEMBLIES • SINGLE ROW STRIPS

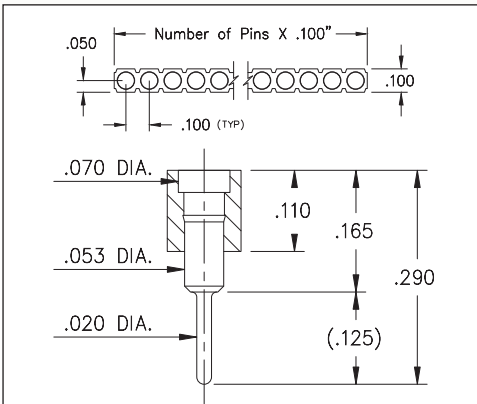


FIG. 1

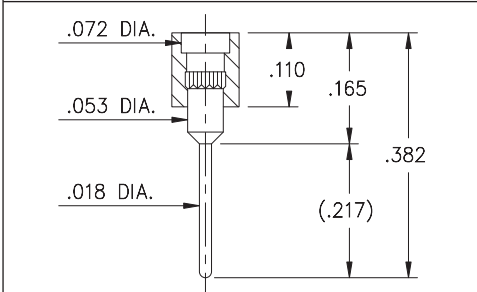


FIG. 2

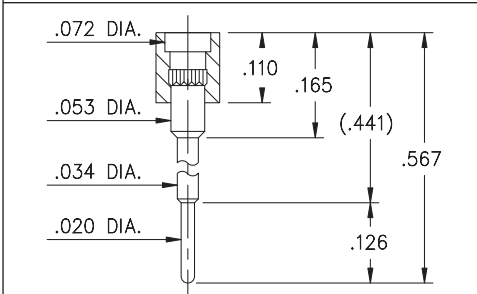


FIG. 3

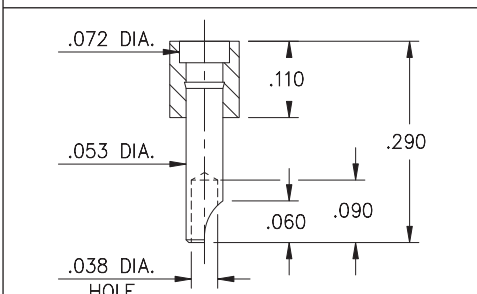
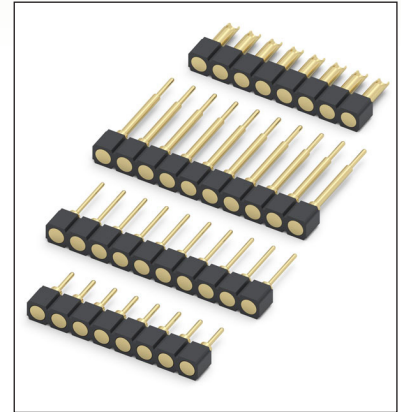


FIG. 4

- Series 319 and 330 Spring Target Connectors, supplied in single row strips. Available in through-hole and wire termination configurations
- Target Connectors provide an excellent gold-plated conductive mating surface for spring loaded connectors. These series are offered with a flat face for making contact with our standard .042" dia. spring pin plungers
- Target connectors use MM #1938, #1940, #1942 and #3024 pins. See page 218 for details
- Insulators are high temperature thermoplastic



ORDERING INFORMATION

	Series 319...001	Standard Solder Tails
FIG. 1	319-10-1	-00-001000 Specify number of pins 01-64
FIG. 2	Series 319...002	Long Solder Tails
	319-10-1	-00-002000 Specify number of pins 01-64
FIG. 3	Series 319...005	Elevated with Solder Tails
	319-10-1	-00-005000 Specify number of pins 01-64
FIG. 4	Series 330...240	Solder Cups
	330-10-1	-00-240000 Specify number of pins 01-64



XX=Plating Code
See Below

For
Electrical, Mechanical
& Environmental Data,
See page 264

SPECIFY PLATING CODE XX=	10			
Pin Plating	 10 μ" Au			



Mouser Electronics

Authorized Distributor

Click to View Pricing, Inventory, Delivery & Lifecycle Information:

Mill-Max:

[319-10-164-00-001000](#) [319-10-164-00-002000](#) [319-10-164-00-005000](#) [330-10-164-00-240000](#) [399-10-164-10-008000](#) [319-10-102-00-001000](#) [330-10-102-00-240000](#) [3119-1-00-00-00-00-08-0](#) [3119-2-00-00-00-00-08-0](#) [399-10-105-10-008000](#) [399-10-101-10-008000](#) [399-10-107-10-008000](#) [399-10-103-10-008000](#) [399-10-114-10-008000](#) [399-10-102-10-008000](#) [399-10-108-10-008000](#) [399-10-109-10-008000](#) [399-10-115-10-008000](#) [399-10-106-10-008000](#) [399-10-110-10-008000](#)