

REV. A

SHEET 1 OF 1

10-638976

REVISIONS

LTR	DESCRIPTION	DATE
A	INITIAL RELEASE	

RECOMMENDED PANEL CUTOUT

3	2	10-638984-001	PIN, CRIMP, DEAD FRONT	3
2	2	10-251414-008	CLIP, RETENTION, #8	2
1	1	10-638980	RECEPTACLE HOUSING	
POS	QTY	PART NUMBER	DESCRIPTION	NOTE

APPROVALS

DATE

PREPARED BY J. SANDBURG

ENGINEER IN CHARGE D. GALLUSSER

DESIGN MANAGER D. GALLUSSER

DESIGN ACTIVITY GROUP C & I

THIRD ANGLE PROJECTION

AMPHENOL CORPORATION

40-60 DELAWARE AVENUE

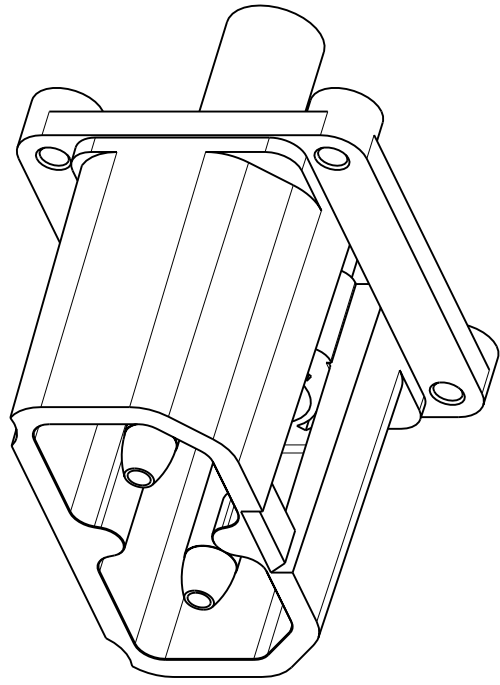
SIDNEY, N.Y. 13838

RECEPTACLE CONNECTOR

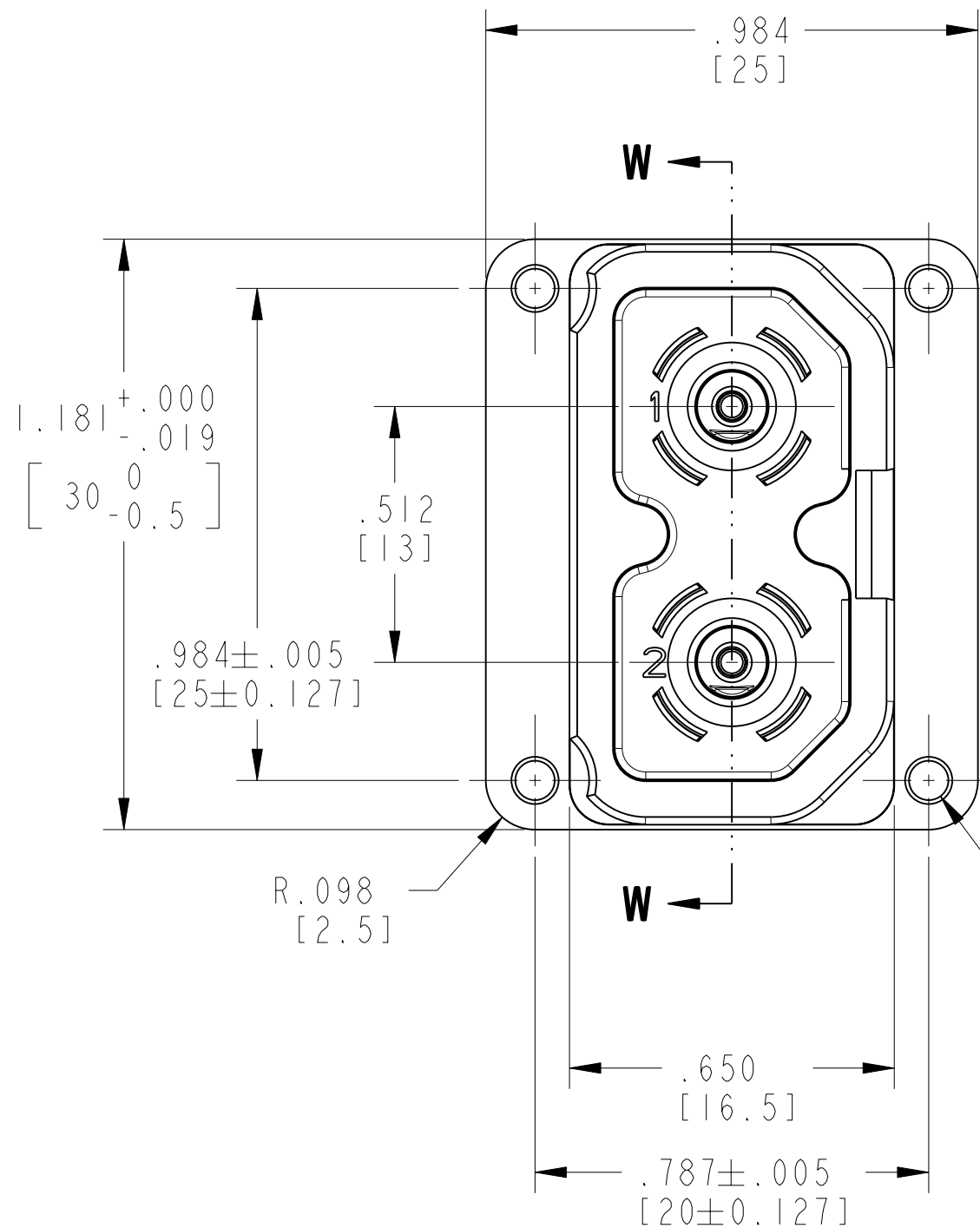
2 POSITION AMPHE-COM

CRIMP TERMINATION

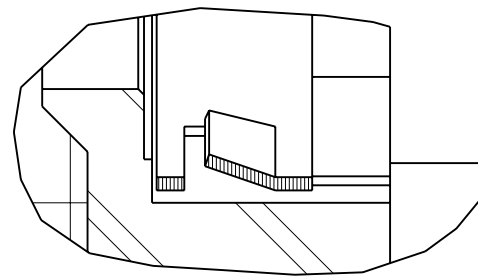
SIZE C	CAGE CODE 77820	DOCUMENT NO. 10-638976	REV. A
SCALE: 3.0 REF:		N/A	SHEET 1 OF 1



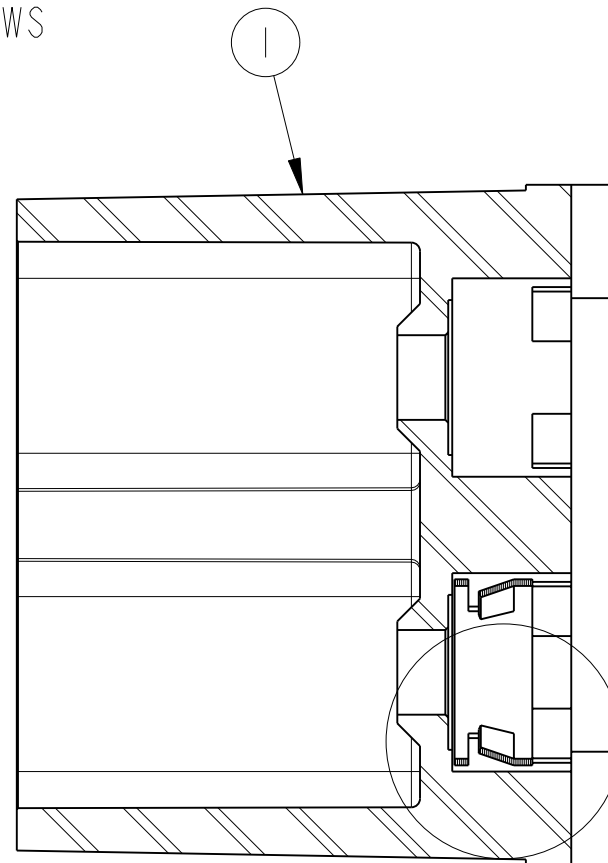
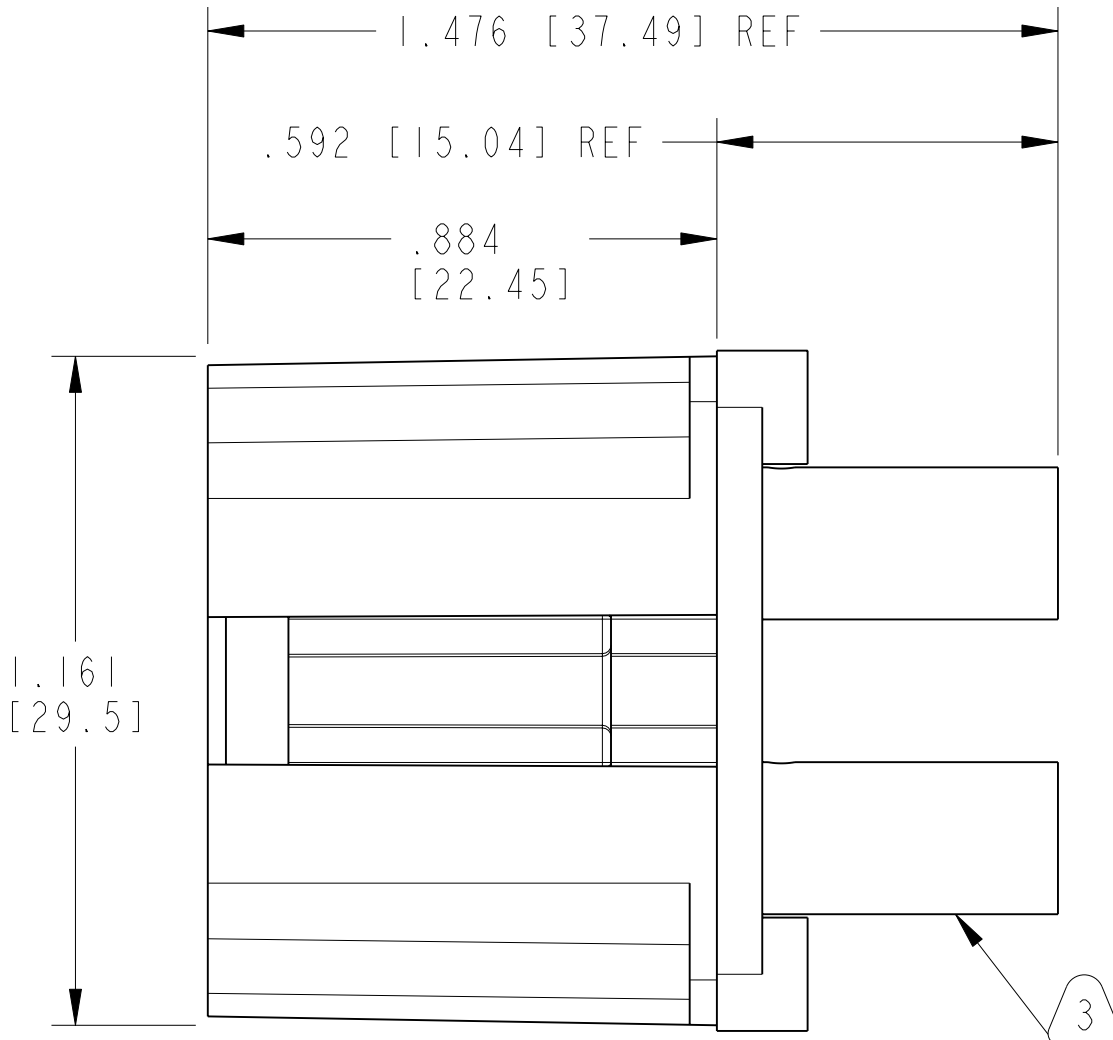
SCALE 2.000



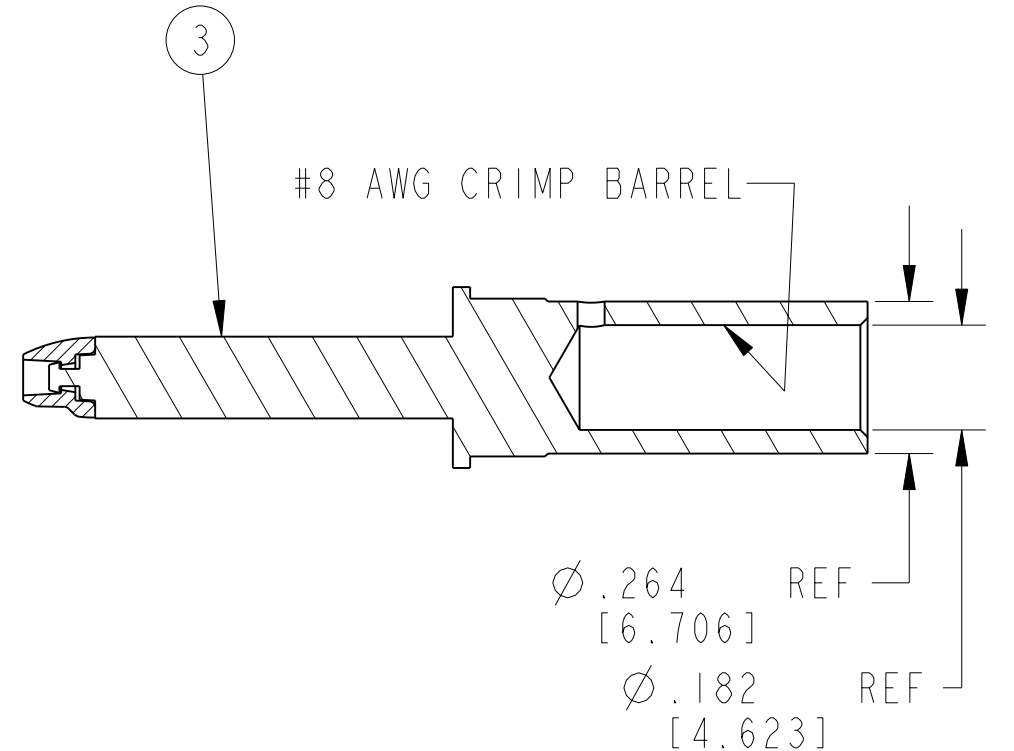
Ø.079 [2] FOR M2.5 THREAD FORMING SCREWS
BOSS 4 PLACES .157 [4]



DETAIL R
SCALE 6.000



ASSEMBLY DETAIL
SECTION W-W



5. CONNECTOR SHOWN MATES WITH 10-638974.
4. SPECIFICATIONS:
ELECTRICAL:
RATED VOLTAGE: 250 Vdc
MAX CONTINUOUS CURRENT LOAD: 69 Adc
FLAMMABILITY: UL94 V-0
INGRESS PROTECTION: DESIGNED TO MEET APPLICABLE PROBES FROM IEC 90950
3. PIN CONTACTS ARE SHOWN FULLY ASSEMBLED BUT ARE SHIPPED UNASSEMBLED. CUSTOMER WILL CRIMP CONTACT TO WIRE AND INSTALL CONTACTS INTO HOUSING.
2. INSTALL CLIPS, ITEM 2, INTO HOUSING, ITEM 1.
NOTE: MAKE SURE TO ORIENT TINES AS SHOWN IN ASSEMBLY DETAIL. MAKE SURE CLIPS ARE FULLY SEATED PASSED SHOULDER AS SHOWN IN DETAIL R.
1. BRACKETED DIMENSIONS AND TOLERANCES ARE IN MILLIMETERS.

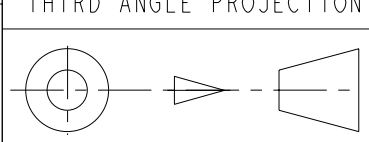
NOTES:

THE USE OF THIS DOCUMENT IS UNLIMITED. HOWEVER, DOCUMENTS REFERENCED HEREON MAY CONTAIN LIMITED RIGHTS DATA.

RELEASED / Feb . 13 2004, 11:06 AM

N/A	PRO/ENGINEER INFORMATION
N/A	Pro/e Model Used: 10-638976.ASSEM
NEXT ASSEMBLY	Drawing Name: 10-638976

UNLESS OTHERWISE SPECIFIED	SPECIFICATIONS
LINEAR DIMENSIONS ARE IN INCHES TOLERANCES: .XXXX = ±.0005 ANGLES= ±2° .XXX = ±.010 .XX = ±.03 .X = ±.1	MATERIAL SPEC. N/A
DIM.& TOL. PER ASME Y14.5M; DRM PER MIL-DTL-31000; OTHER Amphenol Sds. PER 9-3800	PROCESS SPEC. N/A
LEGENDS: =FLAG NOTE CALL OUT REFERENCE ONLY	



Mouser Electronics

Authorized Distributor

Click to View Pricing, Inventory, Delivery & Lifecycle Information:

[Amphenol:](#)

[C10-638976-000](#)